

# Lancaster Farming

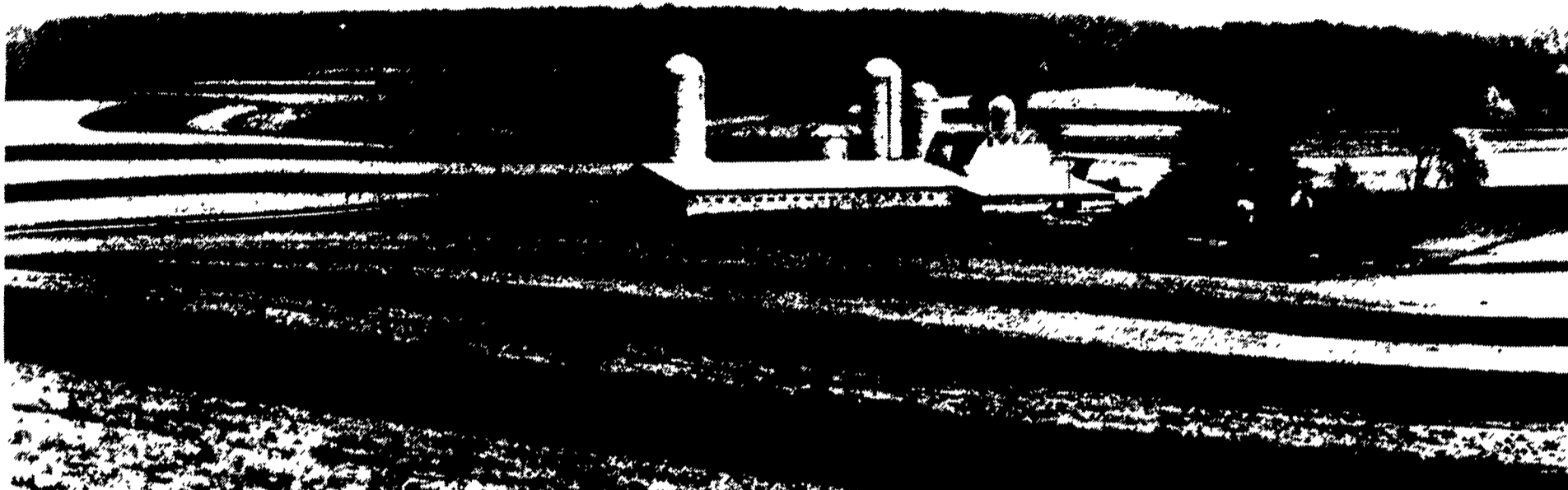
Vol. 38 No. 27

Four Sections

Lancaster Farming, Saturday, May 15, 1993

60¢ Per Copy

\$19.75 Per Year



Three generations of the John Marsteller family take a break during corn planting on the largest block of acreage ever enrolled in the state's land preservation easement purchase program. Front from left are Jason Rineholt, Heather and Jeromey Marsteller, and back, John Marsteller, Jr., Matthew Rineholt and John Marsteller, Sr.



The home farm of the John Marsteller family nestles among rolling hills of contoured strips of corn, soybeans, wheat, and barley. Sign-up of the family's 1063 acres in the program includes cropland in four southern York County townships.

## Marsteller Easement Largest In State

JOYCE BUPP

York Co. Correspondent  
STEWARTSTOWN (York Co.) — Thanks to the efforts of his family and the state's land preservation program, 11-year-old Jeromey Marsteller may someday get his wish.

"I like farming because you get to run tractors," said the Stewartstown youngster, who already thinks about following his father, John, and grandfather, John, Sr., into the agriculture business.

Acceptance of the acreage into the York land preservation program marks enrollment of the largest single block of farmland signed to date in both the county and the state's purchase of development easements. A total of 1,063 acres farmed by the father-son partnership is included in the easement purchase of just more than \$1,000 per acre, for a total value of about \$1.2 million.

More than 800 of the tilled

(Turn to Page A31)

## USDA Intends To Label Meat, Seeks Comment

VERNON ACHENBACH JR.  
Lancaster Farming Staff  
WASHINGTON  
D.C. — Supermarket meat cases in the United States are expected to get a new look sometime after

August 15, according to plans of U.S. Secretary of Agriculture Mike Espy.

The new look is labels on meat and poultry.

According to Mary Dixon,

deputy press secretary to Espy, labels for the safe care and handling of meat products going to consumers are going to be required and a prototype is to be announced after August 15.

She said that the labeling is a personal goal of Espy, one that he announced prior to actually being sworn into office.

David Ivan, president of the Pennsylvania Beef Council, said the proposed mandatory labeling is a welcome thing for the entire meat industry.

According to Ivan, the care and handling labeling mandate, and a separate, but equally welcomed, proposed voluntary nutritional education program for meat, has the potential to greatly benefit the industry.

The general public's meat handling is the cause of 90 percent of the meat food-borne illnesses reported, according to Ivan.

"If we could eliminate or control the poor handling of our product, it would obviously increase sales," Ivan said Thursday afternoon from Harrisburg.

"The National Beef Council has been working with USDA for some time (to get meaningful labeling), it's something that's important to us, that people know how to properly handle our product," Ivan said.

"Our industry recognizes that

(Turn to Page A24)

## Rabies Cautions Still In Effect

LINDA WILLIAMS  
Bedford Co. Correspondent  
ALTOONA (Blair Co.) —

Spring is the time to be on the lookout for rabid animals. "A lot of animals come out of hibernation and mating season begins.

"Raccoons are the main carrier," said David Vore, livestock disease control technician for the

Bureau of Animal Industry in Altoona.

"Contrary to many popular opinions, rabies has not died out. It just runs in peaks. In the past couple of years, it has been particularly bad in the southeast portion of the state."

(Turn to Page A34)

## SRBC Decides Ag Should Pay For Using Susquehanna Water

ANDY ANDREWS  
Lancaster Farming Staff  
LANCASTER (Lancaster Co.)  
— Farmers should not be exempted from paying consumptive useage and water monitoring fees, according to a consensus opinion expressed by the Susquehanna River Basin Commission (SRBC) at a meeting here Thursday.

According to the Commission, agriculture makes up about 20 percent of the total consumptive use of the water in the basin, and should be treated on an equal basis with industry and public utilities who must pay annual withdrawal and monitoring fees.

The Commission, which spoke to about 40 industry and ag rep-

(Turn to Page A26)