

### Public Auction Register

Closing Date Monday 5:00 P.M.  
of each week's publication

FRI. SEPT. 10 - 1:30PM, State Graded Feeder Pig Sale. Located At Carlisle Livestock Market, Inc., Exit 13, South Off I-81, Left Onto Alexander Spring Road. 717-249-4511.

SAT. SEPT. 11 - Pa. Yorkshire Asso. Fall show & sale - Lebanon Area Fairgrounds. Harry H. Bachman, auct.

SAT. SEPT. 18 - Pride of York Co. Club pigs and breeding stock - York Fairgrounds, Harry H. Bachman, auct.

SAT. SEPT. 18 - 11AM Sharp. Horse Sale, Draft, Driving And Mules. Located At 834 Wallace Rd., New Holland, Pa. Owner, Mel Hoover. Abe Diffenbach, Auct.

FRI. SEPT. 24 - Disaster Relief Heifer auction, Lebanon Area Fairgrounds Harry H. Bachman, auct.

FRI. SEPT. 24 - 1:30PM, State Graded Feeder Pig Sale. Located At Carlisle Livestock Market, Inc., Exit 13, South Off I-81, Left Onto Alexander Spring Road. 717-249-4511.

SAT. SEPT. 25 - 10AM, Fall Hfr. Sale. Located At New Holland Sales Stables, Inc., New Holland, Pa.

### OCTOBER

FRI. OCT. 1 - Chester White & Spotted swine national sale - Harrisburg, Pa. Harry H. Bachman, auct.

FRI. OCT. 1 - 7PM, Feeder Cattle Sale. Located At New Holland Sales Stables, Inc., New Holland, Pa.

SAT. OCT. 2, Real Estate, 12 Acres, House, Garage, Chicken House, Personal Property & Antiques. Located Along Route 897 Village Of Fivepointville. Owner, Edna Hollinger. Kline, Kreider, Good.

FRI. OCT. 8 - 1:30PM, State Graded Feeder Pig Sale. Located At Carlisle

Livestock Market, Inc., Exit 13, South Off I-81, Left Onto Alexander Spring Road. 717-249-4511.

FRI. OCT. 8 - 7PM, Horse Sale. Located At New Holland Sales Stables, Inc., New Holland, Pa.

FRI. OCT. 15 - 7PM, (Tentative) 33rd Annual Central Pa. Co-Op Feeder Sale. Located Belleville Livestock Market, Belleville, Pa. For More Information Call, Eugene Glick.

SAT. OCT. 16 - Arnold's Hog Production Sale - Lebanon Area Fairgrounds. Harry H. Bachman, auct.

man, auct.

SAT. OCT. 16 - Harper Valley Hog production sale - Annville, Pa. Harry H. Bachman, auct.

FRI. OCT. 22 - 1:30PM, State Graded Feeder Pig Sale. Located At Carlisle Livestock Market, Inc., Exit 13, South Off I-81, Left Onto Alexander Spring Road. 717-249-4511.

FRI. OCT. 22 & SAT. OCT. 23, Prison Ministry Auction. Farmersville. John D. Stauffer, Auct.

SAT. OCT. 23 - Progress of Pen-Col 3rd Edition, Den-

nis Wolff, Milville, Pa. The Cattle Exchange.

WED. OCT. 27 - 11AM Sale. 9AM- Judging. Dairy Show. Located At New Holland Sales Stables, Inc., New Holland, Pa.

### NOVEMBER

FRI. NOV. 5 - 6PM, Fall Heifer Sale. Located Belleville Livestock Market, Belleville, Pa. For More Information Call Eugene Glick.

FRI. NOV. 5 - 7PM, Horse Sale. Located At New Holland Sales Stables, Inc., New Holland, Pa.

## Dairy and Livestock Sales

### Green Dragon Livestock Sales

Located 1 Mi. N. On North State St., Ephrata Sale Every Friday

11:00 A.M. Beef  
7:00 P.M. Small Animal Sale.

200-300 Stocker & Feeders Every Friday. Regular Shippers Of Northern Cattle.

**WALTER H. RISSER,**

Prop.

Home 717-838-4318  
Office 717-733-2444



### MEL'S STABLE

S E L E C T E D



C O N S I G N M E N T

### HORSE SALE

SAT., MAY 15, 1993 - 11:00 A.M.

HORSES HITTED AT 9:00 A.M. SHARP SALE HELD AT 834 WALLACE RD., NEW HOLLAND, PA. DIRECTIONS: FROM RT. 23 IN NEW HOLLAND, GO SOUTH ON BRIMMER AVE., GO 2 MILES SOUTH ON NEW HOLLAND ROAD TO HILL RD. TURN LEFT ON HILL RD. PROCEED 1.2 MILES TO SALE ON THE LEFT. FROM RT. 340 EAST OF INTERCOURSE TAKE NEW HOLLAND RD., 2.5 MILES TO HILL RD., RIGHT ON HILL RD. TO SALE ON LEFT.

APPROX. 55 HEAD OF SADDLEBREDS  
APPROX. 55 HEAD OF STANDARDBREDS  
APPROX. 20 HEAD WORK HORSES AND MULES

1 LOAD OF SADDLEBREDS FROM MEL HOOVER.  
1 LOAD OF SADDLEBREDS FROM ADAM HOOVER  
1 LOAD OF REAL TOP SADDLEBREDS FROM JACOB ZOOK  
1 LOAD OF STANDARDBREDS FROM JONAS BEILER  
1 LOAD OF STANDARDBREDS FROM NOAH HORST.  
1 LOAD OF STANDARDBREDS FROM ELAM STOLTZFUS.  
Approx. 25 Head Of Real Outstanding Horses Acclimated And Ready To Go.

1 6 Yr. Old Black Trotter, Was Shown In Roadster Classes.  
1 6 Yr. Old Bay Trotter  
Both Horses Have White Markings.  
1 REGISTERED MORGAN GELDING WITH PAPERS PLUS MANY MORE HAND PICKED TOP QUALITY HORSES!! DON'T MISS THIS SALE!!! IF YOU ARE IN NEED OF A HORSE, COME AND FIND THAT SPECIAL HORSE

Come and drive them yourself on Tues., May 11 Thru Fri., May 14 from 9:00 A.M. till dark.

**MEL'S STABLE**  
OWNER - MEL HOOVER

PHONE - HOME 717-354-8397  
BARN 717-354-6431

AUCTS. ABE DIFFENBACH 226L & MEL HOOVER AU003111L  
NOT RESPONSIBLE FOR ACCIDENTS

FOOD ON PREMISES



### SPECIAL FEEDER SALE

NEW HOLLAND SALES STABLES, INC.

FRIDAY, MAY 14, 1993,

7:00 PM

500 - 600 Head

Steers and Heifers all breeds  
Angus- Hereford- Charolais- Holsteins  
YOUR CONSIGNMENTS ARE WELCOME  
New Holland Sales Stables, Inc.

**Norman & David Kolb**

Sale Barn - 717-354-4341  
Home - 717-397-5538

Next Feeder Sale  
Friday, Oct. 1, 1993 at 7:00 PM

### PUBLIC SALE OF LAWN EQUIPT. AND RIDING MOWERS At GOODS AUCTION ON MONDAY EVENING, MAY 10 At 4 P.M.

J.D. 430 diesel Simplicity 20 horse with 60 in deck; JD 318 - 314, 265, 240, 116, 165, 85, 108, 103. 3008 Simplicity, Snappers, Farmall Cub with 60" Deck, 5 varies Fords, 812 Gravelly with snow plow and deck, 4 Golf carts, 16 Hp. Roper, 15 new push mowers, 6 new weed eaters, new 2 hr. to 5 hr. rototiller used Troy Built tiller, new JD trailers, JD mounted tiller, 50 to 75 push mowers all type and models, new express wagons.

Note; We sell on commission. Will have 300 pieces more or less.

Terms: Cash. No out of state checks.  
AH 000014-L

### 25 YEARS OF BREEDING ANGUS CATTLE COMES TO AN END

Announcing the Complete and Total Dispersal of the

### Branchwater Angus Herd

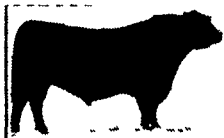
Friday Evening, May 28, 1993

6:00 p.m. at the farm, near Reisterstown, Maryland

Location of farm—Take 695 to Falls Road, exit north on Falls Road for six miles. Turn left on Knox Avenue, first driveway on right.

**Selling: 150 Head**

3 Herd Bulls • 5 Service Age Bulls  
20 Bred Heifers - 60 Cows



Featuring the service of N BAR EMULATION EXT, one of the most talked about bulls in the breed. Noted for his exceptional calving-ease. A number of females sell carrying his service.

BIRTH	WEAN	MILK	COMB	YEAR
EPD ACC	EPD ACC	EPD ACC	VALUE	EPD ACC
+1.5 .88	+46 .86	+4 .71	+38	+67 .79

This sale will be held on Atlantic National weekend, and Branchwater Farms is located six miles from the Maryland State Fairground, which is the home of the Atlantic National.



Featuring the get and service of WK EXTRA SPECIAL 0387, Grand Champion Bull, 1991 Eastern National Livestock Show; Grand Champion Bull, 1991 Maryland Breeders' Show; and Reserve Grand Champion Bull, 1992 Maryland Breeders' Show. This exceptional herd bull is topped out through R&J Extra, chock-full of muscle and red meat, and sells along with his get and service.

60 Females, 50 with calves at side. The herd is rich in the best of Pine Drive Big Sky breeding. Many daughters and granddaughters will sell.

### Branchwater Farms Inc.

William H. & Doreen B. Suchting  
1800 Knox Ave.  
Reisterstown, MD 21136  
(410) 771-0071

For your free reference catalog, contact anyone in the office of the Sale Managers, TOM BURKE and DICK BECK, AMERICAN ANGUS HALL OF FAME, at the WORLD ANGUS HEADQUARTERS, Smithville, MO 64089. Phone (816) 532-0811  
Auctioneer: Mike Jones

### 1ST ANNUAL SPRING HEIFER SALE

VINTAGE SALES STABLES, INC.

THURSDAY, MAY 27, 1993 11:00 A.M.

LOCATION: 10 Miles East of Lancaster, PA -

12 Miles West of Coatesville, PA on Route 30, Paradise, PA.

### REGISTERED AND GRADE OPEN AND BRED HEIFERS

All heifers should be blood and T.B. tested. All heifers will be preg. checked at auction barn. Will accept heifers Wed., May 26 between 8:00 A.M. to 6:00 P.M. Health papers must accompany animals.

**\*\*CONSIGN YOUR HEIFERS NOW\*\***

\*\*Trucks available for immediate shipment\*\*

\*\*All out-of-state buyers must have a current letter of credit\*\*

CALL FOR MORE INFORMATION  
**VINTAGE SALES STABLES, INC.**  
3451 LINCOLN HWY. EAST, PARADISE, PA. 17562  
L. ROBERT FRAME, SR.  
(717) 442-4181 OFFICE (717) 768-8204 OFFICE  
(215) 458-8518 HOME

### SHORT NOTICE SALE

TO BE HELD AT  
SMOKETOWN QUALITY DAIRY SALES  
SMOKETOWN, PA. ROUTE 340

THURSDAY, MAY 13, 1993 8 P.M. D.S.T.

ONE Load Of Registered 2 And 3 Yr. Olds With Good Udders From An Overstocked Farm. Herd Avg. 25,000M 900F Certified And Accredited Use To Free Stall And Tie Stall.

Sample:

Reg. Mandingo- Fresh- 87 Lb. Last Lac. 28,000- 3.7- 3.2 Pro. Dam V.G. 87 - 19,300.

Reg. Mandingo- Due Sept. 21, 1993- 83 Lbs.- 2 Yr. 21,690.

Reg. Tong Dtr. Due Oct. 15, 1993 To A Mark Son. 1st Test 101- 83 Lb. Proj. 19,510.

Dam Chairman Dtr. G.P. 2 Yr. 17,000.

Reg. Beautician Dtr. Fresh 2 Weeks- 80 Lbs. 305- 25,940M 1000 F.

Dam- Enhancer Dtr. 4 Yr. 22,700- 4.5- 1018F.

Reg. Boutonniere- Due Aug. 3, 1993- 63 Lb. 2 Yr. 19,000- 3.8- 3.5 Pro.

Dam- Cletus Dtr. V.G. 87- 3 Yr. 365- 31,000- 4.4- 1373.

Reg.- Vanguard- 2 Yr. Old- 74 Lb. Proj. 21,000.

Dam- Symbol- 2-10- 250- 21,790- 941- Held At 100 Lb. For 4 Mo.

Reg. Tesk- 2 Yr. Just Fresh 55 Lb.

Dam- 3 Yr.- 20,390- 4.7- 967.

Reg. Valiant Command- 2 Yr. 85 Lb. Proj. 22,700.

Dam- Cletus Dtr. 2 Yr. 22,000.

Reg. Duster- 87 Lb.- Proj. 22,700.

Dam- Chairman Son- 4 Yr. Over 20,000.

Reg. Bell Rocky- Due Aug. 61- 2 Yr. Proj. 18,300.

Grd. Dam Ex.- 3 Yr. 24,860.

Reg. Witness- 3 Yr. 89 Lbs.- 2 Yr. 305- 20,190M.

3.7- 3.6 Pro.

Grade Brown Swiss (Mixed)- 3 Yr. 83 Lb.

ONE Load Of Good Fresh Cows For Dave King.

ONE Load Of Reg. And Grade Canadlians Cows.

8 Spr. Hand Picked From 1 Herd Due June And July.

Big Holstein Bull Ready For Service, Proven, Sire Was Registered. Dam Over 22,000 Milk.

Sale Managed By

### SMOKETOWN QUALITY DAIRY SALES

Gordon & Helen Fritz  
717-393-0930