

# Dairy and Livestock Sales

## Public Auction Register

Closing Date Monday 5:00 P.M.  
of each week's publication

SAT. MAY 8 - 1PM, Farm Real Estate. Located Approx. 3 1/2 Miles West Of Liberty, (Tioga Co.) Pa., Along Rt. 414. Watch Auction Signs Off Of The Liberty Exit Of U.S. Rt. 15. Owner, Cora Phelps. Scott Younklin & Associates.

SAT. MAY 8 - 1PM, Inventory Reduction Of Used Lawn Tractors & Mowers. Located At The Corner Of Falls & Mt. Carmel Roads. From Route 88 Go To Beckleysville Road To Mt. Carmel Road To Falls Road. From I-83 Go West On Mt. Carmel Road For 5 Miles To Falls Road. Owner, Whitehouse Farm Supply. Stewart K. Wisner & Co. Auct

SAT. MAY 8 - 6PM 19th Annual Western Pa. Sheep & Club Lamb Sale. 1 mi., north of Mercer on Rt. 19, about 4 mi. from I-80 and I-79. Robert Calvert, PO Box 530, Mercer, Pa.

SAT. MAY 8 - 7PM, Annual Spring Grass Cattle Sales. Located At Friend's Stockyard, 1/2 Mile South Of Keyser Ridge On Rt. 219, Accident, Md. 21520.

### AUGUST

MON. AUG. 2 - 10AM Gainesville (Wyoming Co)

New York Don and Kathy Meyer Complete Potato Farm Dispersal. Pirrung Auctioneers, Inc. Wayland, New York 716-728-2520.

MON. AUG. 2 - 6:30 PM Wholesale Furniture, A&C Diffenbach Auction Inc. 100 W. Jackson St., New Holland. Alan Diffenbach, auct.

WED. AUG. 4 - 6:30 PM Winross Truck & Toys, A&C Diffenbach Auction Inc. 100 W. Jackson St., New Holland Alan Diffenbach, auct.

FRI. AUG. 6 7PM, Horse Sale. Located At New Holland Sales Stables, Inc., New Holland, Pa.

FRI. AUG. 13 - 9AM Farm Equipment & Supplies, A&C Diffenbach Auction Inc. 100 W. Jackson St., New Holland. Alan Diffenbach, auct.

FRI. AUG. 13 - 1:30PM, State Graded Feeder Pig Sale. Located At Carlisle Livestock Market, Inc., Exit 13, South Off I-81, Left Onto Alexander Spring Road. 717-249-4511.

SAT. AUG. 14 - Arnold's Hog production sale, Lebanon Area Fairgrounds. Harry H. Bachman, auct.

SAT. AUG. 14 - Real Estate, 1 1/2 Acres, Person-

al Property. Located 1023 Beam Rd., Denver (Brocknock Twp.), Kline-Kreider-Good Aucts. Sale By, Elizabeth G. Nolt (Mrs. Edwin W. Nolt).

WED. AUG. 18 - Tested boar sale, State College, Pa. Harry H. Bachman, auct.

SAT. AUG. 21 - 11AM Sharp. Horse Sale, Draft, Driving And Mules. Located At 834 Wallace Rd., New Holland, Pa. Owner, Mel Hoover Abe Diffenbach, Auct.

FRI. AUG. 27 - Lebanon Co Holstein Club Sale, Lebanon Area Fairgrounds, Harry H. Bachman, auct.

FRI. AUG. 27 - 1:30PM, State Graded Feeder Pig Sale. Located At Carlisle Livestock Market, Inc., Exit 13, South Off I-81, Left Onto Alexander Spring Road. 717-249-4511

TUE. AUG. 31 - 10AM Tractor Auction (Antique & Modern), A&C Diffenbach Auction Inc. 100 W. Jackson St., New Holland. Alan Diffenbach, auct.

### SEPTEMBER

FRI. SEPT. 3 - 7PM, Horse Sale. Located At New Holland Sales Stables, Inc., New Holland, Pa.

FRI. SEPT. 3 - 9AM, Fall Machinery Sale. Located Belleville Livestock Market, Belleville, Pa. For More Information Call, Eugene Glick.

## SUNNY BROOK FARM ORVIS & MILDRED CHRISTOPHER COMPLETE HERD DISPERSAL McGraw, N.Y.

Tues. Evening, May 18, 1993  
7:00 PM

Auction to be held on the farm on Rt. 41, 1/2 mile from exit #10 (Cort-McGraw) Off I-81.

### 115 - GOOD HOLSTEINS - 115

65 Mature Cows - 8 fresh, 4 due May, biggest share due from July - November. 20 Big Bred Heifers from Bagging to fall Freshening. 30 Super Heifers from Started Calves to Breeding Age. This Homebred Herd has been all Artificially Sired! Never a Bull on the place! All Cattle are Calfhood Vaccinated, Pregnancy Examined, Blood & TB Tested, and all are eligible for immediate Interstate Shipment evening of sale.

PS - A top herd here. Some of the nicest calfhood vaccinated heifers to be sold this year. Mr. Christopher is selling after 45 years due to illness. Don't miss this great opportunity to buy the right kind of herd replacements! TERMS - Cash or Good Checks with Positive ID. Payment in full evening of sale.

Owners -  
**ORVIS & MILDRED CHRISTOPHER**  
MEL MANASSE

Sales Managers & Auctioneers  
Whitney Point, N.Y.

607-692-4540 / 1-800-MANASSE

Save This Ad, It Will Not Appear Again

## PUBLIC AUCTION OF 42 acres of land Tuesday, May 25, 1993 at 7 P.M.



Located along Bollinger Rd., West Nantmeal Twp., Chester County. From Elverson take Rt. 82 South turn right on Bollinger Rd., go approximately one mile to property on left.

PROPERTY CONSISTS OF: 42 acres of land, 1/2 wooded, 1/2 open land. Large 6 acre stocked lake. Terrain is sloping. One of the most beautiful home sites in rural Chester County.

INSPECTION: Saturday, May 8th from 1 - 4 P.M.

TERMS: 10% day of sale; settlement on or before July 15, 1993.

TERMS BY:  
**Ruth Houck**

**HORNING & MILLER AUCTION CO.**  
Affiliated with  
Horning Farm Agency, Inc.  
Alvin Horning, AU-0433-L  
George Miller, IV  
Main Street, Morgantown  
(215) 286-5183



## HERD DISPERSAL for RICHARD ROBINSON AND SONS 401 Water Way Road, Oxford, PA 19363

TUESDAY EVENING, MAY 18, 1993  
7:30 PM  
(First Night Sale of the Year)

Herd consists of approximately 75 head of Holstein cows and heifers, 90 percent home raised, using ABS and Atlantic breeding. Cows have been milked on this farm for the past 45 years. Milked weighed on May 1, 1993 averaged 63.7 lbs. per cow. Eleven cows from 91 lbs. to 112 lbs., with 31 head being two and three year olds. A real good herd of cows, being dispersed only due to discontinuing of the dairy operation.

Also Selling: 35 Head of Springing and Fresh Cows.  
If you want replacements to last, don't miss this sale.

Sale Managed by:  
**Shady Lane Dairy Sales Inc.**  
23 Shady Lane, P.O. Box 673  
Quarryville, Pa. 17566-0673  
"Six Generations of Sales and Service"

## HEIFERS - HEIFERS - HEIFERS



FRIDAY MORNING,  
MAY 28, 1993

10 AM DST

AT SHADY LANE DAIRY SALES INC.  
ALL SIZES OF FARM FRESH HEIFERS

Consignors: All consignments must be from farms, no shipped heifers accepted. Have your heifers T.B. and Blood tested before arrival. Contact us if you have any good farm fresh heifers to sell. Accepting daily from 8:00 am to 5:00 pm on Wednesday and Thursday, May 27. No heifers accepted sale day. All heifers sold individually for best price. Health papers with results of tests and pregnancy exams must accompany heifers.

Buyers: All new out of state buyers must have letter of credit. Heifers pregnancy checked. Accredited Vet available for interstate. Trucks available for immediate shipment.

Directions: From Harrisburg - 283 to Lancaster to 222 south and Quarryville.

From Baltimore - I-95 north to 222 north and Quarryville. In Quarryville, 1/4 mile west on Rt. 372, Left onto Oak Bottom Road and Shady Lane. Only farm on road.

Plan to be with us all day on Friday, May 28.

**Shady Lane Dairy Sales, Inc.**  
23 Shady Lane P.O. Box 673  
Quarryville, Pa. 17566-0673

Glenn D Fite  
717-786-2750

Fax 717-786-3250

David L Fite  
717-786-1725

"Six Generations of Sales and Service"

## Linkland Farms Complete and Total Dispersal Sale

Saturday, May 22, 1993 • at the farm, Mercer, PA

Equipment 10 a.m. • Cattle Noon



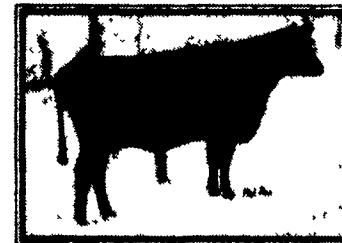
This 4-year-old daughter of Scotch Cap from the R&J Laura family with a tremendous yearling daughter by R&J Maxima and a 2-year-old daughter by High H Spide.

BIRTH WEIGHT	WEANING WEIGHT	MATERNAL MILK	COMB	YEARLING WEIGHT				
+4.5	.25	+28	.24	+5	.20	+18	+46	07



This 4-year-old daughter of Scotch Cap descends from the PS Playmate family that produced both PS Power Play and PS High Pockets. A sale situation from a great cow family!

BIRTH WEIGHT	WEANING WEIGHT	MATERNAL MILK	COMB	YEARLING WEIGHT				
N/A	N/A	+25	.24	+6	.22	+17	N/A	N/A



This 3-year-old daughter of Leachman New Style is a maternal sister to the dam of R&J Paper, the 1988 Dairy National NOV Grand Champion Bull. A daughter of the great Pathfinder Cow, Leachman Bluehead 629.

BIRTH WEIGHT	WEANING WEIGHT	MATERNAL MILK	COMB	YEARLING WEIGHT				
+6.9	.08	+26	.27	+15	.26	+28	+46	07



A daughter of the many-time champion, 9F Christmas Play Girl, one of the all-time great daughters of PS Power Play. Sired by heavily the proven producer side with a Superior Yearling prospect of side by Ginger Hill Boss.

BIRTH WEIGHT	WEANING WEIGHT	MATERNAL MILK	COMB	YEARLING WEIGHT				
+3.5	.25	+22	.24	+7	.20	+18	+38	23



This daughter of PS High Pockets is one of the top-producing cows in the Linkland herd. She will sell with a calf at side by Boss and the side will also feature her powerful 3-year-old daughter by Leachman Alley and her 4-year-old daughter by Scotch Cap pictured here.

BIRTH WEIGHT	WEANING WEIGHT	MATERNAL MILK	COMB	YEARLING WEIGHT				
+3.8	.25	+31	.34	+15	.34	+31	N/A	N/A



This fantastic 4-year-old daughter of Scotch Cap was produced by the very best daughter of PS High Pockets in the Linkland herd. Her 3-year-old maternal sister by Leachman Alley and her 2-year-old daughter by R&J Maxima will also sell.

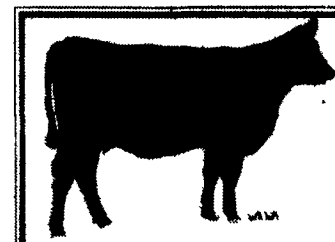
BIRTH WEIGHT	WEANING WEIGHT	MATERNAL MILK	COMB	YEARLING WEIGHT				
+4.8	.25	+33	.29	+16	.29	+27	N/A	N/A

Linkland Katinka In addition to the mother and daughter pictured here, a tremendous 2-year-old daughter of Skyline from a 2100 daughter of the foundation Katinka sells as a sale attraction!



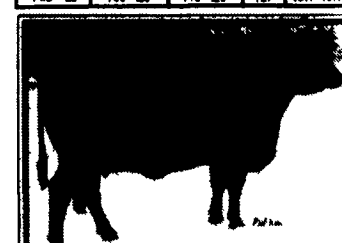
Sired by R&J Maxima, this tremendous proven producer is a daughter of the daughter of PS Power Play. Sired by heavily the proven producer side with a Superior Yearling prospect of side by Ginger Hill Boss.

BIRTH WEIGHT	WEANING WEIGHT	MATERNAL MILK	COMB	YEARLING WEIGHT				
+4.8	.28	+22	.26	+11	.24	+22	+44	07



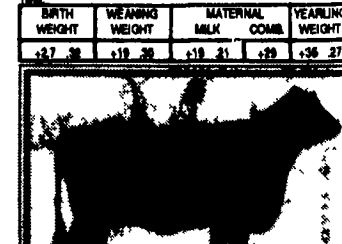
This attractive 2-year-old daughter of R&J Maxima was produced by the R&J Maxima daughter of the foundation Katinka cow. Certain to be a sale day favorite!

BIRTH WEIGHT	WEANING WEIGHT	MATERNAL MILK	COMB	YEARLING WEIGHT				
+5.7	.27	+38	.25	+14	.12	+38	N/A	N/A



A massive and productive daughter of the Pathfinder sire, Rite 518 from a dam by PS Power Play from the famous PS Northern Elegant family. This proven producer side with a daughter of Leachman Alley pictured here.

BIRTH WEIGHT	WEANING WEIGHT	MATERNAL MILK	COMB	YEARLING WEIGHT				
+7.7	.28	+19	.26	+18	.21	+29	+36	27



This powerful 3-year-old daughter of Leachman Alley was produced by the Rite 518 daughter pictured above. Sired to Margo Navigator 95Y, the great son of Othello Navigator from the Skymen family, she sells with an outstanding May yearling daughter by her.

BIRTH WEIGHT	WEANING WEIGHT	MATERNAL MILK	COMB	YEARLING WEIGHT				
+4.4	.28	+34	.26	+18	.21	+38	+38	27

Featuring the Get and Service of these Linkland Hill Sires:  
R&J Maxima, Margo Navigator 95Y and Ginger Hill Boss 15D  
ALSO SELLING THE FOLLOWING EQUIPMENT:  
1988 F250 Ford pickup; 1988 Circle M Gooseneck Cattle Trailer (6'x18'); Oliver 1800 Tractor; Ford 3000 Tractor; Case IH 8430 Round Baler; New Holland 479 Haybine; Kuhn Rake/Tedder; Hay Wagon with Racks; 4-bottom plow; 12' transport disc; New Holland Super 717 Chopper with corn and grass head; Ford Bush Hog; 40' hay and grain elevator; Palco working corral, complete with tub and hydraulic scales; miscellaneous tools and small items.

### Linkland Farms

50 Redfoot Rd., Greenville, PA 16125  
Steve (412) 934-2976 • Eric (412) 475-2906

For your free reference catalog, contact anyone in the office of the Sales Managers,  
TOM BURK/DICK BECK,

AMERICAN ANGUS HALL OF FAME, at the  
WORLD ANGUS HEADQUARTERS, Sikeston, MO 64808  
(816) 982-0811