

## Public Auction Register

Closing Date Monday 5:00 P.M.  
of each week's publication

### **PUBLIC AUCTION** VALUABLE REAL ESTATE 7 ACRE POULTRY FARMETTE THURSDAY, JUNE 3, 1993 1:30 PM

Located at 2459 Fisher Rd., Chambersburg, PA. From Chambersburg take Rt. 30 West to Rt. 995. Turn left and go South on Rt. 995 2 1/2 mi. to Fisher Rd. Right on Fisher 1/2 mi. to property on right.

5 Bedroom 2 Bath Stone and Frame House with Large Eat-In Kitchen w/Stone Fireplace, Living Rm., Den, Laundry. Full Basement with Gas Hot Water Heat. Attached Garage. House in Good Condition. Well and Septic System.

360'x42' 2 Story 45,000 Broiler Chicken House in Good Condition. Separate Well. This House is Under Contract and has a History of Strong Income.

35'x70' Steel Implement Shed w/Concrete Floor. Building in Good Condition.

Property also has Pasture with Stream and High Tensile Wire Fence.

Terms: 10% Down the Day of the Sale with the Balance due in 45 Days. To Inspect This Property Call 717-263-4093 or 717-367-1880.

Sale by  
**DANIEL & ESTHER WADEL**  
Attorney: Michael Flincane  
Auctioneers: 2897-L  
Harold "Abe" Shaffner 717-653-5689  
Mark Diefenderfer 717-367-1880

SAT. MAY 29 - 9AM, Valuable Antiques, House Items, Guns, Van, Golf Cart. Located From Red Lion Square Take Rt. 74 S Approx. 1.6 Mi. Turn L Onto Burkholder Rd. For 1 Mi.

Turn L. Onto Blacksmith Rd. & Go Short Distance To Sale On R. Follow Signs. Owner, Esther Frey, Melvin Haines & Ralph Brenneman, Aucts.

SAT. MAY 29 - 9AM

### **Public Auction** May 15th, 1993 11:00 AM

Real Estate known as Lot #1 Lakeview Hills along Paper Mill Rd. in Peach Bottom Township, York County, PA.

The undersigned on this day will offer at public Auction Real Estate containing 1/2 acre +/- improved with a 1974 12x65 Pacemaker Mobile Home with Living Room, Kitchen, 2 Bedrooms, & Bath. Ideal as a starter home or investment. This property is located just outside the entrance gate to Peach Bottom Atomic Plant. Think of the Potential! The owners having retired want to sell this investment property. Now someone else can take advantage of its-potential. Come prepared to buy!

Inspection Day of Auction or by appointment.

Terms: 10% Day of Auction balance in 30 days

Balance of terms by Rob Lloyd, Stock & Leader

Law office, York, Pa.

717-846-9800

Owners:  
**T.J. & Myrtle Phillips**  
Fawn Grove, PA  
717-382-4113

Auctioneer  
Martin Heaps  
Fawn Grove, PA  
717-382-4225

#AU-002762-L

Clip This Ad!

Household goods, antiques, Barbara Ebersole paintings, tools & Winross trucks. Located 12 miles East of Lanc. in village of Intercourse at 6 Queen Rd. Across from Best Western Motor Inn, Intercourse, Pa. By Mary S. Glick, Robert E. & Jeffrey R. Martin, aucts.

SAT. MAY 29 - 9AM, Full Line Of Household Goods.

Lancaster Farming, Saturday, May 8, 1993-B41

Located Plum Hill Road, Wakefield, Pa. Caleb & Esther Wenger. Kreider, Bucher & Heaps, Aucts.

SAT. MAY 29 - 9AM, Antiques, Furniture, Personal Property & Tools, Etc. Located At 6219 Lincoln Hwy. (1 Mile West Of

Wrightsville) At Stegmer-tens Willow Brook Farm. Owner, Doris M. Stegmer-ten. Gilbert & Gilbert, Aucts.

SAT. MAY 29 - 9:30AM, Period Antiques & Collectibles, Walnut, Pine, Cherry, Mahogany, Oak Furniture, Fine China & Glassware, Art & Frames, Partial List Only. Located From Residence Sold At Rt. 272 At Rt. 1 By-Pass, Nottingham, Pa. By Order, Local Estates. Jeffrey E. Whiteside, Auct.

SAT. MAY 29 - 9:30AM, Antique and collectible toys and garden tractors. Rheems Fire Co for Alvin Crisamore, E.M. Murry Assoc., aucts.

SAT. MAY 29 - 10AM, Farm of Arthur S. Baker Estate, 17 A Farm and 12 Acre Lot Bradley K Smith, auct

SAT. MAY 29 - 10AM 2 96 Acres, From Annville take Rt 934 N 1.4 miles, turn right on Hill Church Rd go 1/2 mile to property on left or from Interstate 81 take exit 29 Rt 934 s 5 miles to left on Hill Church Rd N Annville Twp. Leb Co., Pa By James M & Ruth M Stover. Paul E Martin, aucts

SAT MAY 29 - 10AM, PB Hfr. Sale. Located At New Holland Sales Stables, Inc., New Holland, Pa

SAT. MAY 29 - 11AM 19 acres, Lykens Valley Farmette. Along the road between Gratz and Klingers-town in Lykens Township, Dauphin Co., Pa. Mrs. Kenneth Lebo, owner. Mike & George Deibert, aucts.

SAT. MAY 29 - 11AM 6 Acres real estate Located 1/2 mile South of Rogers OH to Sprucevale Rd. thence continuing South 1 mile to Carmel Anchor Rd then East 4 mile to Union Ridge Rd. thence South 1/2 mile to home. Mr. & Mrs. Fred Clair. Jim Baer Auct.

SAT. MAY 29 - 2PM, Real Estate. Located West Of Reinholds Along 897 From Intersection Of 272 & 897 Go N897 Thru Reinholds App. 1 Mi. To Property On Right. Terms By, George N. & Marie Hoover. Hoover Auctioneering.

SAT. MAY 29 - 2PM Real estate. From Lewisburg take Rt. 192 West approx. 4 miles turn right on Johnson Mill Rd go 2 miles to stop sign turn right on John Kelly Rd. turn left on Spruce Run Rd. go to Black Run Rd. turn left, continue 1.4 miles to property on right Buffalo Twp, Union Co., Pa. By Eugene K. and Linda S. Martin Paul E Martin, aucts

### **PUBLIC AUCTION** FARM EQUIPMENT-TRUCKS- BOAT-ETC.

SAT-MAY 15-  
10:00 A.M. "SHARP"

SHICKSHINNY - R.R. #2, PA  
Turn off US Rt. 11 at Hunlock Creek-Go 3 1/2 miles to Muhlenburg Corners-Go straight for 1 mile-Turn right at large white cement silo-Go 2 miles to Broadway Corners-Turn right at store-Go past church and turn left on good dirt road-Go 1/4 mile-Turn right. Sale is right along road about 1/2 miles to the farm of Russell Earl Harrison. (Watch for Auction Signs!)

Scrap Piles Rain or Shine  
Jarson 16 1/2' Tri-Hull Boat With 115 H.P., Chrysler motor with walk thru windshield, Covers & Trailer, Ex. Condition, Ready to go-J.D. 2510 Gas w/Front 148 JD Loader-Int. 706 D w/ 2 pt Hitch & NEF A C WD-45 w/2 Row mtd. picker-A.C.-CA NF Tractor I H 710 4-16 Semi-mounted Auto Reset Plow-J.D f-45 4-16 Mounted Plow & 3 pt. Hitch-Jd H. Mod HD 13' Disc-Dearbonate 6' Off-Set Disc. 3 pt. Hitch-Brillion 12' Transport Cultipacker-New Idea 323 Corn Picker-New Idea 310 Corn Picker-JD 1340 6 Row Corn Planter-300 Gal. Century Trailer Sprayer & Pump-Extra Centrifugal Pump-Oliver Superior Drill-15 Disc w/Seeder-New Holland 850 Round Baler-Case 555 Hay Bine-8 MF Spring Loaded Coulters-4 Concaved-4 Straight-Year Round-A-Tractor Cab-Gyro Broadcast Spreader-12' Gravity Wagon-12' Flat Wagon-42' Ft. Hay & corn Elevator w/8 H P. Electric Start Motor-5" X 24" Grain Auger-Lg. Fert set up for Corn Planter-Hyd Cylinders A.C. 92 Alcrop Combine-Sears Super Hatcher Wood Incubator-1000 Gal. & 500 Gal. Steel Fuel Tanks-12 Hole Metal Hog Feeder-New Holland Bale Thrower-N.H. Manure Spreader-Oliver 4 Row Corn Planter-Fiberglass Fert. Hoppers-110 Gal. Field Sprayer-2 Row, 3 pt. Hitch Cultivators-1976 Int. Truck 1700 Series-1979 F-350 Dump Truck-M.F. Back Hoe Attachments-1947 Chev. T-Tag Dump-A C 2 Bottom Plow F.C.A.-2 Row Cultivators for CA-1972 Int Truck 1600 Series (For Parts) 6 Double Disc Openers for J.D. Corn Planter-3 H.P. Gas Motor with Gear Reduction-5' 3 PTH, Rotary Mower-Air Compressor-8' Aluminum Truck Cap-Push Lawn Mower & Bagger-1987 Bronco II 4 w.d.-1975 Chev. Blazer (As Is)-(Many Items Coming in Daily!)

Statements made day of sale take precedence over previously written material-Owner or Auctioneer Not Responsible for Accidents - Sale Terms Cash or Good Check.

Sellers:

**Russell Earl Harrison**  
**Friends & Neighbors**

Lunch-Yes

NEVIUS AUCTION SERVICE  
310 E. 5th St. Berwick, PA 18603  
Licensed & Bonded Auctioneers  
A Complete Auction Service  
Phone # (717) 752-4214  
Dan Nevius-AU000679L  
Jeanette Nevius AA-0020-33-L

## VILSMIEIER ABSOLUTE AUCTION

93C042

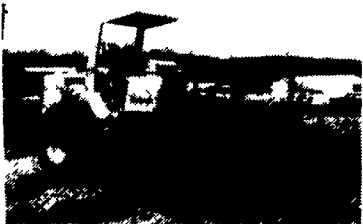
**— COMPLETE LIQUIDATION —**  
CONSTRUCTION & EXCAVATING EQUIPMENT - 1988 HYSTER COMPACTOR, TRACK DRILL, COMPRESSORS, (2) 1989 FREIGHTLINER TRI AXLE DUMP TRUCKS, 1989 IHC FUEL TRUCK, TRUCK TRACTOR, 40 TON LOWBOY PICKUPS, 1991 ESTIMATING COMPUTER SYSTEM & CONTRACTORS TOOLS

TUESDAY, MAY 25 - 10:00 A.M.  
READING, PA

**D.B. DIEFENDERFER & BRO., INC.**

NOTICE: After 60 years in the construction and excavating business, D.B. Diefenderfer & Bro., Inc. has decided to liquidate and sell out completely Everything in the sale belongs to D.B. Diefenderfer & Bro., Inc. and all items will absolutely sell to the highest bidder regardless of price.

LOCATION: The sale will be held at the D.B. Diefenderfer & Bro., Inc. office and yard facility, 117 Prospect Street, in Reading, PA.



#### HYDRAULIC EXCAVATORS

JOHN DEERE 890, s/n 890B006033T, dsl; JOHN DEERE 790D, s/n CK790DL007721 (1988 - Purchased NEW 1989), dsl; JOHN DEERE 690B, s/n DW690BA502574 (1984), dsl; JOHN DEERE 690B, s/n DW690BA401822 (1981), dsl; GRADALL G660 Track Mid., s/n NP266802, dsl; INSLEY H560C, s/n H7111C, dsl, hyd. dnve; INSLEY HC560, s/n H5474C, dsl, chain dnve

#### CRAWLER LOADERS & TRACTORS

CAT 963 C. Loader s/n 21Z01016 (1987), dsl; CAT 963 C. Loader, s/n 11Z00321 (1984), dsl; CAT 953 C. Loader s/n 20Z01225 (1987), dsl; CAT 953 C. Loader, s/n 20Z01042 (1987), dsl; CAT 977L C. Loader, s/n 14X2009 (1980), dsl; CAT 955L C. Loader, s/n 13X2590 (1980), dsl; (2) CAT 955L C. Loader, s/n 85110842 & 8515332, dsl; CAT 955K C. Loader, s/n 61H546, dsl; CAT D8H C. Tractor, s/n 46A31289, dsl; (2) CAT D8H C. Tractor, s/n 46A27837 & 47A14300, dsl; CAT D5 C. Tractor, s/n 96J2327, dsl; CAT D4, s/n 7U33403, dsl

MOTOR SCRAPERS & GRADERS, PULL PANS & END DUMPS  
TEREX TS14B Tandem, s/n S21265 (1988), (2) Det. dsl; CAT 613C Elevating, s/n 92X01003 (1986), dsl; CAT 621A, s/n 23H583, dsl; CAT 621A, s/n 23H561, dsl; CAT 621A, s/n 23H560, dsl; CAT 12 Grader, s/n BT29795, dsl w/pony start; CAT 212 Grader, s/n 9T4913, dsl. w/pony start; (2) CAT #435 & #60 Pull Pans, s/n 45D511 & 1D1481; (2) EUCLID R-10 1UD 10 Ton End Dumps, s/n IU18350 & IU12923, dsl.

#### RUBBER TIRED LOADERS, TRACTOR LOADER BACKHOES

CAT 930 Art. R.T.L., s/n 41K2896, dsl; CAT 922 R.T.L., s/n 94A3263, dsl; MICHIGAN 75A R.T.L. s/n 9149, dsl; (3) FORD 555B T.L.B., s/n C766370 (1987), C760878 (1986), & C711650 (1983), dsl; (2) DYNAMO 160 Series III T.L.B., s/n 40168F & 40084E (1980 & 1979), dsl; (3) DYNAMO 160 T.L.B. s/n 22071E, 21611 & 21421, dsl.

#### TRACK DRILL, AIR COMPRESSORS & TRENCHER

I-R ECM350 Track Drill, s/n 242860 (1985); I-R 750 cfm Port. Compr., s/n 158572 (1986), dsl; QUINCY 125 cfm Port Compr., s/n 40217 (1984), dsl; CLEVELAND JS-36 Crawler Wheel Trencher, s/n 304994, dsl

#### 1988 HYSTER COMPACTOR & ROLLERS

HYSTER C850B Art. Vib Compactor, s/n B188C1620J (1988), dsl; I-R SP-54 Art Vib Compactor, s/n 218, dsl, PAC 2100E Pavemaster Tandem Roller, s/n 82372, gas

#### TRUCK TRACTOR & 40 TON LOWBOY

1983 FREIGHTLINER 12064 T/A Truck Tractor, dsl., 10 spd; 1973 ROGERS 40 Ton T/A Detach lowboy, s/n 16425, w/pony motor & 20' level deck.

#### 1989 IHC FUEL TRUCK

1989 INTERNATIONAL 1700 1,800 gal., dsl., 10 spd., w/2-compartment tank, meters, pumps & hose reels  
(2) 1989 FREIGHTLINER TRI AXLE DUMP TRUCKS

#### (2) 1989 FREIGHTLINER 11264, dsl., 10 spd., w/16' steel rock bodies, 44,000# rears

(2) 1979 INTERNATIONAL Tandem 2654 Tandem Axle, dsl., 13 spd., 1974 INTERNATIONAL 2010 Tandem Axle, dsl., 13 spd., 1968 INTERNATIONAL 1900 Tandem Axle, (Bad Trans.), 1970 CHEVY C60 Single Axle, (2) 1965 INTERNATIONAL 1890 Single Axle, (4) 1962 INTERNATIONAL 1800 Single Axle.

PLUS: SERVICE TRUCKS - PICKUPS - COMPRESSOR TRUCK - FUEL, WATER & FLATBED TRUCKS - STEP VANS - CHIPPER - BRUSH CUTTER ATTACHMENT - 1991 ESTIMATING COMPUTER SYSTEM - TRENCH & MANHOLE BOXES - PULL PANS - ATTACHMENTS - BUCKETS & TOOLS.

ABSOLUTE AUCTION - EVERYTHING SELLS AS-IS WHERE-IS TO THE HIGHEST BIDDER REGARDLESS OF PRICE. TERMS: COMPLETE PAYMENT SALE DAY IN CASH OR GUARANTEED FUNDS ONLY.

INSPECTION: One week prior to the sale date, from 8:00 a.m. to 4:30 p.m., and sale day starting at 7:30 a.m.

FINANCING: Servlease Corp. specializes in leasing all types of construction equipment and trucks for most industries. Bidders must be prequalified at least 5 days in advance. For complete leasing information, call James M. Maionno (215) 538-1753, Glenn Button (717) 346-7708, or 1-800-848-7624.

Site Phone: (215) 779-3440 (As of May 18th)

PA Auction Lic: RH-000021-L

**VILSMIEIER  
AUCTION CO., INC.**

1-800-BID-N-BUY  
Rt. 309 Montgomeryville  
Pa. 18938/215-699-5833

## Public Auction

THURSDAY  
MAY 13, 1993  
4:30 P.M.

### ANTIQUES COLLECTIBLES HOUSEHOLD GOODS

LOCATION: Citizen's Fire Company, N. College St., Palmyra, Pa. College St. is 1 block west of the square off Rt. 422.

4 pc. waterfall bedroom suite; 5 pc. patio table set w/umbrella; youth & twin beds; 3 pc. wicker set; china closet; crib; Singer treadle machine; wooden arm chair; cottage bed; end & coffee tables; oak dresser; lamps; (2) exhaust fans; 40' wooden ext. ladder; propane & quartz heaters.

9 DUCKS UNLIMITED decanters by Beam; set of 8 CASTARI grandparents series plates; lots of plates & cups by ROCKWELL; state plates; Rediscovered women, Christmas & Mothers Day plates; Campbelltown bank; candy boxes; 1897 Daily News; Mt. Hope Winery decanters Inc. Cornwall Mines; crocks; (2) mantle & (2) shelf clocks; collector tins; cuckoo clock; (12) dolls inc. Cabbage Patch & doll furniture; (12) teddy bears; calendars; TMI pictures; new decoys; PRR glassware & papers; prints & pictures; baby plate; Cornwall-Lebanon RR paperwork; Martin shaving mug; HERSHEY- Christmas balls, DiMagno prints, tins, mugs, pictures, Transit Co. plate & milkcan; Christmas lights; antelope & mule deer head mounts.

Doors open at 12:00 for inspection.

Terms: CASH or approved check.

HARRY H.

**BACHMAN**  
AU-000033-L AUCTIONEER

138 College Avenue-Annuville PA 17003  
(717) 867-1809

Auction by  
**HAROLD &  
MIRIAM GIBSON**