

Central U.S. Carlot

Pork Report
May 5, 1993

Report supplied by USDA

CENTRAL U.S. CARLOT PORK REPORT FOB OMAHA BASIS INCLUDES MAJOR PRODUCTION AREAS IN MIDWEST AS OF 3 P.M.

COMPARED TUESDAY'S 3:00 P.M. CLOSE: FRESH LOINS STEADY; BUTTS MOSTLY 1.00 LOWER; SKND. HAMS STEADY; SDLS. BELLIES STEADY TO FIRM. TRADING MODERATE TO ACTIVE WITH LIGHT TO MODERATE DEMAND FOR MOSTLY MODERATE OFFERINGS.

****NOTE: 1/2 LOAD 20-26 LBS. SELECTED HAMS AT 63.00****

93.5 LOADS PORK CUTS
36.0 LOADS TRIM/PROCESS PORK PORK CUTS

LOINS, REGULAR, FRESH
14-18 LBS. * 17.0 LOADS, RANGE 103.00-114.00, WGHTD. AVG. 109.79.
1/2" TRIM 14-18 LBS., 17.0 LOADS, RANGE 121.00-134.00, WGHTD. AVG. 128.97.

1/2" TRM/LESS 14-18 LBS., RANGE 140.00, WGHTD. AVG. 140.00 A.
1/2" TRIM 18-22 LBS., * RANGE 107.00, WGHTD. AVG. 107.00 C.

1/2" TRIM 18-22 LBS., RANGE 129.00, WGHTD. AVG. 129.00 C.

LOIN, BLS CTRCT 5-9 LBS.
5-9 LBS. STRAP-ON, 2.0 LOADS, RANGE 239.00, WGHTD. AVG. 239.00.

5-9 LBS. STRAP-OFF, RANGE 244.00, WGHTD. AVG. 244.00 A.

BNLS SIRLOIN .75-1 LBS.
RANGE 141.00-144.00, WGHTD. AVG. 142.00 A.

PICNIC, FRESH (COMBOS) FOR SMOKER TRIM, RS
3.0 LOADS, RANGE 46.00-56.00, WGHTD. AVG. 52.33.

COMMODITY 4-8 LBS. UNQUOTED.

BOSTON BUTT

4-8 LBS. *, 19.0 LOADS, RANGE 65.00-74.00, WGHTD. AVG. 69.24.

1/2" TRIM 4-8 LBS., 19.0 LOADS, RANGE 84.00-92.00, WGHTD. AVG. 87.50.

SPARERIB FRESH

1.5-3.5 LBS., 0.5 LOADS, RANGE 118.00, WGHTD. AVG. 118.00

3.5-5.5 LBS., RANGE 96.00, WGHTD. AVG. 96.00 A.

SPARERIB FROZEN

3.5-5.5 LBS., RANGE 87.00, WGHTD. AVG. 87.00 E.

HAM, SKINNED, SELECTED FRESH 17-20 LBS., 5.0 LOADS, RANGE 63.00-64.00, WGHTD. AVG. 63.80.

FRESH 20-26 LBS., 9.0 LOADS, RANGE 60.00-62.00, WGHTD. AVG. 60.67.

HAM, SKINNED, COMMODITY FRESH 17-20 LBS., 2.0 LOADS, RANGE 62.00, WGHTD. AVG. 62.00.

FRESH 20-26 LBS., 3.0 LOADS, RANGE 57.50-61.00, WGHTD. AVG. 59.83.

FRESH 32 LBS. AND UP, 2.0 LOADS, RANGE 61.00, WGHTD. AVG. 61.00.

BELLY, SDLS, SKIN-ON, FRESH FRESH 10-12 LBS., 1.0 LOADS, RANGE 34.00, WGHTD. AVG. 34.00.

FRESH 12-14 LBS., 4.0 LOADS, RANGE 36.50-37.00, WGHTD. AVG. 36.88.

FRESH 14-16 LBS., 6.0 LOADS, RANGE 36.50-37.00, WGHTD. AVG. 36.92.

FRESH 16-18 LBS., 9.0 LOADS,

RANGE 36.50, WGHTD. AVG. 36.50.
FRESH 18-20 LBS., 6.5 LOADS, RANGE 33.00-34.00, WGHTD. AVG. 33.38.

FRESH 20-25 LBS., 4.5 LOADS, RANGE 31.00-32.00, WGHTD. AVG. 31.11.

PORK TRIMMINGS/ BONELESS PROCESSING PORK (CHEMICAL LEAN)

COMBO 42% FRESH, 4.5 LOADS, RANGE 26.00-27.00, WGHTD. AVG. 26.78.

BOXED 42% FROZEN, 3.0 LOADS, RANGE 35.00-36.00, WGHTD. AVG. 35.67.

COMBOS 72% FRESH, 14.5 LOADS, RANGE 49.50-50.00, WGHTD. AVG. 49.90.

BOXED 72% FROZEN, RANGE 56.00, WGHTD. AVG. 56.00 B.

PICNIC CUSHION MEAT BOXED 92% FROZEN, RANGE 88.00, WGHTD. AVG. 88.00 D.

BONELESS PICNIC MEAT COMBO 72% FRESH, 14.0 LOADS, RANGE 51.00, WGHTD. AVG. 51.00.

BOXED 72% FROZEN, RANGE 57.00, WGHTD. AVG. 57.00 A.

SHANK MEAT FROZEN, RANGE 72.00, WGHTD. AVG. 72.00 C.

SKINNED JOWLS COMBO FRESH, RANGE 27.00, WGHTD. AVG. 27.00 A.

BOXED FROZEN, -RANGE 38.00, WGHTD. AVG. 38.00 C.

NOTE! (*) REFLECTS 1/2" TRIMMED PRODUCT BROUGHT BACK TO A REGULAR COMMODITY BASIS.

ABCDE AFTER QUOTES REPRESENTS DAYS SINCE LAST ACTUAL MARKET TEST. QUOTES ARE DROPPED AFTER 5 DAYS OF NO TEST

OR BEFORE IF THEY NO LONGER REFLECT CURRENT MARKET CONDITIONS.

PORK CARCASS CUTOUT WEDNESDAY, MAY 5, 1993

ESTIMATED GROSS CUTOUT VALUES OF A 175 LB. HOG CARCASS BASED ON USDA CUTTING YIELD TESTS AND CARLOT PRICES. WEDNESDAY'S CARCASS GRADES AND PRICES PER CWT.:

US#1 64.01, CHANGE FROM TUESDAY'S VALUE 0.01; US#2 61.96, CHANGE FROM TUESDAY'S VALUE 0.01; US#3 59.90, CHANGE FROM TUESDAY'S VALUE 0.01; US#4 57.85, CHANGE FROM TUESDAY'S VALUE 0.02.

TODAY'S CALCULATIONS FOR USA#2 175 LB. PORK CARCASS:

SKINNED HAMS, 14-20 LBS., 21.01% OF CARCASS, 63.00 FOB VALUE; LOINS, 1/2" TRIM, 14-22 LBS., 20.33% OF CARCASS, 128.75 FOB VALUE.

BELLIES, SDLS, 12-14 LBS., 13.90% OF CARCASS, 36.75 FOB VALUE, 0.25 CHANGE FROM TUES.; SPARERIBS, 3.5DN LBS., 3.03% OF CARCASS, 118.00 FOB VALUE, CHANGE FROM TUES. 1.00.

PICNICS, 8-12 LBS., 10.31% OF CARCASS, 34.50 FOB VALUE; BUTTS, 1/2" TRIM, 4-8 LBS., 7.25% OF CARCASS, 88.00 FOB VALUE, -0.50 CHANGE FROM TUES.

JOWL, 2.85% OF CARCASS, 27.00 FOB VALUE; NECKBONES, 1.52% OF CARCASS, 10.00 FOB VALUE, -1.50 CHANGE FROM TUES.

FEET, 1.05% OF CARCASS, 16.00 FOB VALUE; TAILS, 0.22% OF CARCASS, FOB VALUE 28.00, -2.00 CHANGE FROM TUES.

TRIM 72%, 2.19% OF CARCASS, 50.00 FOB VALUE, 0.50 CHANGE FROM TUES.; LARD 10.85% OF CARCASS, 15.50 FOB VALUE.

TOTAL CARCASS 94.51%. US#2 CARCASS VALUE PER CWT. 61.96.

NOTE: VALUE MAY CHANGE WITHOUT ADEQUATE TEST.

Valley Stockyards

Athens, Pa.

Monday, April 3, 1993

Report supplied by auction

HOLSTEIN HEIFER CALVES TOP 215.00.

VEALER CALVES TO 91.00.

VEALER BULL CALVES TO 170.00.

SLAUGHTER CALVES 60.00 AND DOWN.

GRASSERS & FEEDERS 50.00-75.00.

LAMBS SMALL TO 110.00, WOOL TO 77.50.

SHEEP 12.00-24.00.

HOGS 200-250 36.00-40.00.

SOWS TO 32.50.

BOARS 27.00-36.00.

HEIFERS 48.00-54.00.

STEERS COMMON TO 58.00.

FEEDER STEERS 60.00-88.00.

BULLS 48.00-63.75.

GOOD COWS 47.00-49.00, TOP 52.00.

COWS MEDIUM 44.00-46.00.

COWS POOR OR SMALL 40.00 AND DOWN.

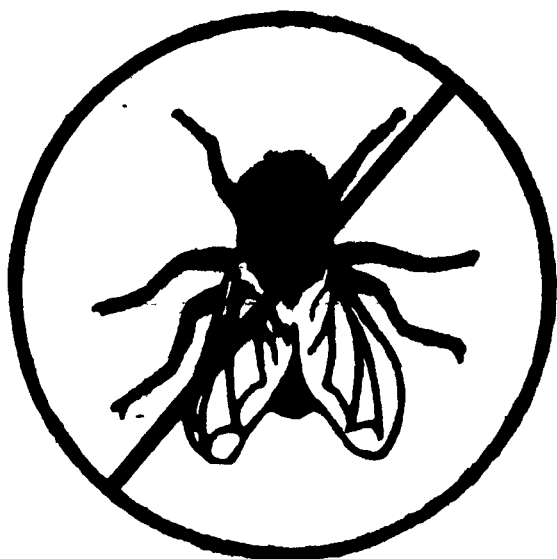
CATTLE MARKET STEADY.

CALF MARKET STRONG.

GOATS: TO 57.50.

PRICES GOOD.

HESSMILLS



"STOP FLIES BEFORE THEY GET STARTED"

Call Hess Mills for all your Purina fly control products.

Big Discounts For Early Orders

Example: Easy Duster Dust Bags 18% Off Reg. Price

HESSMILLS

PURINA CHOWS

6 S. Vintage Rd.
Paradise, PA 17562
(717) 442-4183
(717) 768-3301

Rt. 82
Unionville, PA 18375
(215) 347-2377

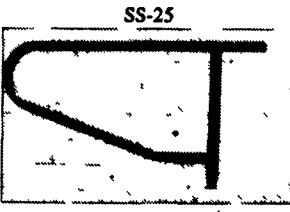
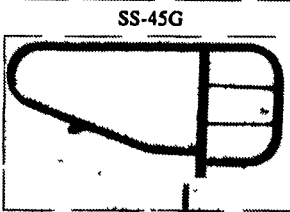
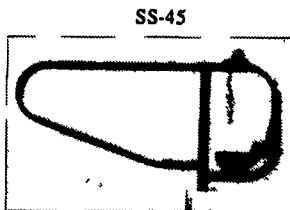
* Registered trademark of Ralston Purina Company

PAUL B. Zimmerman INC.

SUSPENDED COMFORT STALLS
For Modern Tie Barns



Coated With Baked On Top Grade TGIC Polyester Urethane Powder After Fabrication



- All welded construction to give many years of trouble free service
- Stall constructed with 1.9 O.C., .133 wall, high strength tube and 2" square tube post with 1/4" wall

CHECK THESE ADVANTAGES OF SUSPENDED COMFORT STALLS

- More comfort for cows
- Easy cleaning, bedding & milking with no rear stall post
- No rust problem
- Adjustable tie rail
- Trough dividers
- Less trampled teat problems than with conventional stalls

PAUL B. ZIMMERMAN, INC.

Call or Write For Additional Information And Your Nearest Dealer

Hours Mon. Thru Fri. 7 to 5 Sat. 7 to 11

295 Woodcorner Rd.
Lititz, PA 17543
1 Mile West of Ephrata
717-738-7365