

**Virginia Weekly**  
Richmond, Va.

WEEKLY REVIEW IN VIRGINIA REVIEW OF VIRGINIA DIRECT HOGS FOR THE PERIOD APRIL 21-27, 1993. RECEIPTS FOR COUNTRY BUYING STATIONS IN VIRGINIA FOR THE PERIOD TOTALED 2453 HEAD. RECEIPTS FOR DELIVERY TO THE PLANT (WITHIN A 30 MILE RADIUS) FOR THE PERIOD TOTALED 4028 HEAD. THE VIRGINIA DIRECT HOG MARKET FOR TUESDAY APRIL 27,

CLOSED \$.50 HIGHER COMPARED TO LAST TUESDAY'S TRADING.

BARROWS AND GILTS: VIRGINIA COUNTRY POI-250 LBS. 43.50-44.00 US 1-3 200-210 LBS. 40.50-41.00 US 1-3 210-220 LBS. 42.50-43.00 US 2-4 250-260 LBS. 41.50-42.00 US 2-4 260-270 LBS. 39.50-40.00.

SLAUGHTER STEERS AND HEIFERS 3%; SLAUGHTER COWS 12% SLAUGHTER BULLS 2%, SLAUGHTER CALVES AND VEALERS 0%; FEEDER CATTLE UNDER 600 LBS 69%, OVER 600 LBS 14%. PRICE RANGES FOR VIRGINIA

WEEKLY AUCTIONS: SLAUGHTER CATTLE: TOTAL HEAD COUNT 7 STEERS: CHOICE 2-3 1000-1150 LBS 67.00-70.00 CHOICE 2-3 1150-1300 LBS 61.00-69.00.

HEIFERS: CHOICE 1-2 950 & UNDER 64.00-67.00.

SLAUGHTER COWS TOTAL HEAD COUNT 514 UTILITY & COMMERCIAL COWS 40.00-55.00.

SLAUGHTER BULLS: HEAD COUNT 138 BULLS - 1-2 900-1300 LBS 50.00-66.00 1-2 1300-1600 LBS 54.00-66.25 1-2 1600 LBS & OVER 52.75-68.50.

SLAUGHTER CALVES & VEALERS TOTAL HEAD COUNT 30 HEAD CALVES - GOOD AND CHOICE 250-500 LBS 77.00-81.00 VEALERS - CHOICE & PRIME 200-350 LBS.

SLAUGHTER LAMBS TOTAL HEAD COUNT 240 (NEW CROP) CHOICE FEW PRIME 1-2 FEW 3 68.00-80.00 CHOICE & PRIME 3-4 72.00 (WOOLED) CHOICE FEW PRIME 1-2 FEW 3 56.75-71.75 GOOD & FEW CHOICE 1-2 50.00-65.75 CHOICE & PRIME 3-4 45.00.

SLAUGHTER HOGS TOTAL HEAD COUNT 210 US 1-3 200-250 LBS 31.00-43.00 SOWS US 1-3 300-500 LBS 26.00-39.25 500 LBS & OVER 37.00-40.75.

FEEDER CATTLE TOTAL HEAD COUNT FOR ALL WIEGHTS 7521 STEERS: MEDIUM 1 200-300

97.00-110.00 FEW 122.50 300-400 91.00-98.50 FEW 110.00-117.00 400-500 94.00-103.50 FEW 112.00 500-600 90.00-108.00 600-700 82.50-90.50 FEW 102.00 700-800 75.00-90.00 800-900 69.00-84.00.

HEIFERS: MEDIUM 1 300-400 84.00-96.50 FEW 100.50-103.00 400-500 79.50-88.50 FEW 91.00-101.00 500-600 75.00-89.00 600-700 70.00-83.00 700-800 70.00-80.50 800-900 65.00-72.00.

STATE GRADED SLAUGHTER CATTLE SALE AT STAUNTON, VA ON APRIL 20, 1993. 227 HEAD SOLD.

STEERS CHOICE 2-3, 1100-1350 LBS 75.00-80.50 SELECT 2-3, 1000-1300 LBS 73.50-76.50.

HEIFERS CHOICE 2-3, 950-1100 LBS 75.00-79.00.

**Northern Virginia**

Southside (Blackstone), Va.

Wednesday, April 28, 1993

PRICES BASED ON OUT WEIGHTS. SLAUGHTER CATTLE 69 HEAD.

SLAUGHTER COWS 62 HEAD COWS CUTTER & BONING UT. 1-3 43.50 - 46.75 HIGH DRESSING 47.00 - 49.00 BREAKING UT. & COMM. 2-4 43.00 - 48.50 HIGH DRESSING 50.00 - 52.50 CANNER AND LOW CUTTER 1-2 34.50 - 44.00.

SLAUGHTER BULLS 7 HEAD BULLS Y.G. 1-2, 900-1300 LB. 56.50 - 57.00 Y.G. 1-2, 1300-1600 LB. 55.00 - 59.50 Y.G. 1-2, 1600 LBS. & OVER 62.00 - 67.00.

FEEDER CATTLE 278 HEAD STEERS 94 HEAD MEDIUM 1 LARGE 1 SMALL 1 MED & LARGE 2 300-400 106.00-109.00 106.00-109.00 - - 400-500 98.00-109.00 98.00-109.00 78.50- 89.00 - 500-600 90.00- 98.50 90.00- 98.50 - - 600-700 - - - 84.50- 90.50 700-800 82.50- 84.00 82.50- 84.00 - - HOLSTEIN STEER MED & LARGE 2 300- 500 77.50- 83.50 500- 700 66.00- 67.50.

HEIFERS MEDIUM 1 LARGE 1 SMALL 1 MED & LARGE 2 300-400 86.50- 90.00 86.50- 90.00 81.00- 85.00 85.50- 92.00 400-500 78.50- 88.00 78.50- 88.00 72.50- 76.00 73.50- 75.00 500-600 - - - 600-700 79.00- 80.50 79.00- 80.50 - - BULLS MEDIUM 1 LARGE 1 SMALL 1 MED & LARGE 2 300-400 90.50-106.00 - 90.50-105.00 400-500 99.00-103.00 99.00-103.00 80.50- 90.00 92.00- 95.00 500-600 - - - 75.50- 84.00 COWS RETURNED TO FARMS 8 HEAD - M&L-2, 4-8 YRS OLD 850-1050 LBS \$46.00-\$3.50 PER HEAD. COWS WITH CALVES AT SIDE 4 PAIR - M-1, 4-8 YRS OLD 900-1000 LBS WITH CALVES 100-200 LBS \$710.00-810.00; M-1, 8-12 YRS OLD 1050 LBS WITH CALVES \$660.00; M-2, 6 YRS OLD 800

LBS WITH CALVES 80 LBS \$680.00 PER PAIR. BABY CALVES RETURNED TO FARMS 10 HEAD NEWBORN TO 4 WK OLD \$65.00-120.00 1 AT \$155.00 PER HEAD. OVER 100 LBS \$130.00-140.00 1 AT \$165.00 PER CWT.

Smithfield, Va.

Wednesday, April 28, 1993

PRICES BASED ON IN WEIGHTS: SLAUGHTER HOGS 152 HEAD BARROWS AND GILTS US 1-3, 200-250 LB. 40.00 - 43.25 SOWS US 1-3, 300-500 LB. 35.00 - 37.80 US 1-3, 500 LBS. & OVER 37.00- 40.50 BOARS 300-600 LB. 32.50- 35.80.

SLAUGHTER CATTLE 16 HEAD. SLAUGHTER STEERS & HEIFERS 5 HEAD STEERS CHOICE 2-3, 1000-1150 LB. 73.00 HEIFERS CHOICE 2-3, 950 LBS. & UNDER 65.00 CHOICE 2-3, 950-1100 LB. 67.50 - 72.00.

SLAUGHTER COWS 10 HEAD COWS BREAKING UT. & COMM. 2-4 45.00 - 48.50 CANNER AND LOW CUTTER 1-2 37.00 - 39.50.

SLAUGHTER BULLS 1 HEAD BULLS Y.G. 1-2, 900-1300 LB. 57.50 LAMBS TOTAL RECEIPTS 8 HEAD SLAUGHTER LAMBS 8 HEAD NEW CROP CHOICE FEW PRIME 1-2 FEW 3, 72.00.

GOATS 15 HEAD BILLIES - MEDIUM 42.00 - 45.00 KIDS - 24.00 - 26.00.

FEEDER CATTLE 74 HEAD STEERS 20 HEAD MEDIUM 1 SMALL 1 MED & LARGE 2 400-500 - 87.00 80.50- 92.00 500-600 - 80.00 - 600-700 82.50.

HEIFERS 33 HEAD SMALL 1 MED & LARGE 2 200-300 - 86.00- 90.00 300-400 - 79.00- 86.00 400-500 80.00- 82.00 77.00 BULLS 21 HEAD MEDIUM 1 SMALL 1 MED & LARGE 2 200-300 - 91.00- 97.00 - 300-400 - - 102.00-104.00 400-500 94.00 - 84.00- 85.00 500-600 - - - 600-700 76.00 - - COWS WITH CALVES AT SIDE 5 PAIR - M-1&S-1, 800-1000 LBS \$610.00-625.00 PER PAIR.

**Marshall, Va. Horse Sale**

Report Supplied by Auction

April 23, 1993

RIDING HORSES, SERVICEABLE AGE: AVERAGE TO GOOD QUALITY 925-1175 LBS. 640.00-800.00, 800-900 LBS. 435.00-575.00; BETTER QUALITY 1000-1150 LBS. FEW 810.00-950.00. RIDING PONIES: SMALL 200.00-310.00.

LOOSE HORSES: AVG. TO GOOD FLESH, 925-1175 LBS. 515.00-775.00; 800-900 LBS. 435.00-525.00; 1200-1600 LBS. 745.00-805.00.



Hay And Straw Sales Will Start At 10 A.M. Every Wed.

**GOOD'S AUCTION**  
111 North Maple Ave.  
Leola, PA 17540  
717-656-8911  
717-656-9554

**HAY, STRAW & GRAIN SALE**

Every Thursday at 1 p.m.

Auction will continue all year long

Vintage Sales Stables, Inc.

(Rt. 30, 10 miles east of Lancaster in Paradise, PA)

For Info. 717-442-4181 business 215-458-8518 home

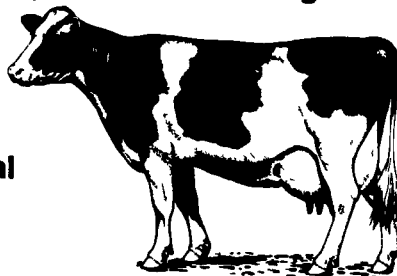
L. Robert Frame, Sr. president Glenn S. Frame Mgr.

Milking cows, dry cows, helpers, calves, and beef cattle throughout Pennsylvania, Maryland, and Canada are experiencing the benefits of White Oak's newest product...

**NUTRI-CATALYST**  
A Profitable Investment In The Future Of Your Herd

Nutri-Catalyst is a dietary ingredient that enhances the nutritional value of virtually all types of cattle rations and is designed

as a rumen modulator that improves fermentation and digestion. It increases the availability of protein, energy, minerals, and vitamins in practical forage and cereal grain diets.



FEED: 1 Ounce Per Head Per Day (TMR or Top Dress).

**Can Be Used With Any Feeding Program To:**

- Improve persistency of milk production
- Obtain higher peak milk yield
- Improve milk quality, protein and fat test
- Improve utilization of good and marginal quality forage
- Improve hoof health and immunity
- Re-establish intestinal microflora following digestive upsets



Quality People, Products & Service Working for YOU.

PA, MD Toll Free 1-800-468-5524

Elizabethtown (717) 367-1525

Pinola (717) 532-7845

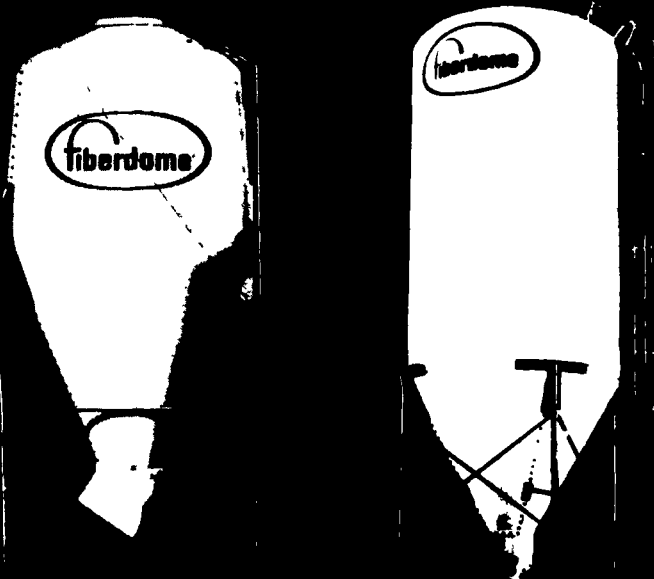
For more information on Nutri-Catalyst, contact your local White Oak representative or call our dairy nutritionist. Dealer Inquiries Invited



Why settle for 2nd best when Fiberdome now manufactures the most advanced fiberglass bulk bin available!

- Superior strength and durability
- Long life expectancy
- Resistant to rust and corrosion
- Easy to clean and maintain
- Available in various sizes and configurations
- Ideal for storing feed, fertilizer, and other bulk materials

Learn why Fiberdome is the most advanced fiberglass bulk bin available!



Write for a free literature package and a free sample of fiberdome to make it make a used for high performing bin.

**DONALD R. NISSLEY**  
RD #1, Willow Street, PA  
(Corner of Rt. 272 S. & Byerland Church Rd.)  
(717) 786-7654



...made to last