

Pa. Grain

Monday, April 26, 1993

Report supplied by PDA

COMPARED WITH LAST MONDAY'S MARKET FOR SOUTHEASTERN, CENTRAL, AND SOUTH CENTRAL PA: CORN UNEVEN, MOSTLY STEADY TO .05 HIGHER; WHEAT STEADY TO .10 LOWER; BARLEY AND OATS MOSTLY STEADY TO STRONG; SOYBEANS UNEVENLY STEADY; BAR CORN MOSTLY STEADY.

SOUTHEASTERN PENNSYLVANIA
CORN NO. 2-Y RANGE 2.45-2.70, AVERAGE 2.56, FEW REPORTED CONTRACT FOR HARVEST 2.40-2.52; @WHEAT NO. 2 RANGE 3.25-3.52, AVERAGE 3.37, FEW REPORTED CONTRACT FOR HARVEST 2.90-3.05; BARLEY NO. 3 RANGE 1.80-2.20, AVERAGE 2.04, FEW REPORTED CONTRACT FOR HARVEST 1.60-1.80; OATS NO. 2 RANGE 1.50-1.85, AVERAGE 1.67, FEW REPORTED CONTRACT FOR HARVEST 1.10; SOYBEANS NO. 1 RANGE 5.60-6.00, AVERAGE 5.83, FEW REPORTED CONTRACT FOR HARVEST 5.75-5.85; FEW REPORTED GR. SORGHUM #2 RANGE 2.40, AVERAGE 2.40, FEW REPORTED CONTRACT FOR HARVEST 2.25; AVERAGE MOISTURE NEW EAR CORN RANGE 63.00-75.00, AVERAGE 68.27.

SOUTH CENTRAL PENNSYLVANIA
CORN NO. 2-Y RANGE 2.35-2.50, AVERAGE 2.40; @WHEAT NO. 2 RANGE 3.00-3.50, AVERAGE 3.25; BARLEY NO. 3 RANGE 1.75-2.00,

AVERAGE 1.87; OATS NO. 2 RANGE 1.40-1.85, AVERAGE 1.62; SOYBEANS NO. 1 RANGE 5.50-5.75, AVERAGE 5.23; AVERAGE MOISTURE NEW EAR CORN RANGE 60.00-70.00; AVERAGE 62.43.

SOUTHEASTERN, CENTRAL & SOUTH CENTRAL SUMMARY
CORN NO. 2-Y RANGE 2.40-2.70, AVERAGE 2.51; @WHEAT NO. 2 RANGE 3.20-3.60; AVERAGE 3.34; BARLEY NO. 3 RANGE 1.75-2.25, AVERAGE 1.97; OATS NO. 2 RANGE 1.40-1.85, AVERAGE 1.63; SOYBEANS NO. 1 RANGE 5.50-6.00, AVERAGE 5.80; AVERAGE MOISTURE NEW EAR CORN RANGE 60.00-75.00, AVERAGE 65.89.

CENTRAL PENNSYLVANIA
CORN NO. 2-Y RANGE 2.40-2.60, AVERAGE 2.50; @WHEAT NO. 2 RANGE 3.30-3.60, AVERAGE 3.36; BARLEY NO. 3 RANGE 1.80-2.25, AVERAGE 1.96; OATS NO. 2 RANGE 1.45-1.75, AVERAGE 1.61; SOYBEANS NO. 1 RANGE 5.50-6.00, AVERAGE 5.83; AVERAGE MOISTURE NEW EAR CORN RANGE 55.00-70.00; AVERAGE 64.00.

WESTERN PENNSYLVANIA
CORN NO. 2-Y RANGE 2.15-2.60, FEW REPORTED 1.93; AVERAGE 2.34; @WHEAT NO. 2 RANGE 3.20-3.35, AVERAGE 3.28; BARLEY NO. 3 RANGE 1.85-1.92, AVERAGE 1.89; OATS NO. 2 RANGE 1.40-1.75, FEW REPORTED 1.95, AVERAGE 1.66; SOYBEANS NO. 1 RANGE, FEW REPORTED; 5.50; AVERAGE 5.60; AVERAGE MOISTURE NEW EAR CORN FEW REPORTED RANGE 65.00,

AVERAGE 65.00, MONTH AGO
CORN NO. 2-Y 2.46; @WHEAT NO. 2 3.34; BARLEY NO. 3 1.93; OATS NO. 2 1.62; SOYBEANS NO. 1 5.75; AVERAGE MOISTURE NEW EAR CORN 63.54.

YEAR AGO
CORN NO. 2-Y 2.98; @WHEAT NO. 2 3.80; BARLEY NO. 3 2.17; OATS NO. 2 1.89; SOYBEANS NO. 1 5.65; AVERAGE MOISTURE NEW EAR CORN 86.81.

Isennock Auction

New Park, PA
April 26, 1993

Report supplied by auction

SLAUGHTER COWS: 53.25 & DOWN.

SLAUGHTER STEERS: 1330 LBS. 71.75-74.00.

SLAUGHTER BULLS: 1460-1725 LBS. 57.25-62.00.

FEEDER HEIFERS: 520-685 LBS. 64.00-68.00.

FEEDER STEERS: ONE LOT AT 750 LBS. AVG. 68.00.

FARM CALVES: 130-140 LBS. 122.00-146.00; 105-110 LBS. 142.00-167.00; 95-100 LBS. 140.00-145.00; 85-90 LBS. 122.00-135.00; WEAK AND ROUGH 42.00 AND DOWN.

HEIFER CALVES: 85-100 LBS. 142.00-157.00.

SHEEP: 100-175 LBS. 18.00-26.00.

GOATS: SMALL 31.00-45.00 HEAD; KIDS 19.00-27.00 HEAD.

Aberdeen Sales Company, Inc.

Complete Auction & Appraisal Service
Churchville, Md.

Wednesday, April 28, 1993

SLAUGHTER STEERS: MARKET STEADY. CHOICE 2-4 1100-1400 LBS. 79.00-81.50; SELECT & LOW CHOICE 1000-1500 LBS. 75.00-79.50; HOL. STEERS HI CHOICE & PRIME 1250-1400 LBS. 70.00-72.00; CHOICE 1200-1500 LBS. 66.00-69.00; SELECT, ALL WEIGHTS 65.00-67.50.

SLAUGHTER HEIFERS: MARKET STEADY. CHOICE & PRIME 950-1300 LBS. 78.00-80.50; SELECT ALL WEIGHTS 900-1400 LBS. 72.00-76.00.

COWS: MARKET STEADY. BRK. UT. & COMM. 2-4 BULK 49.00-52.00; HI DRESSING 53.00-55.00; CUTTER & BON. UT. 46.00-49.00; HI DRESSING 49.00-52.00; CANNER & CUTTERS 44.00-48.00; LOW DRESSING 44.00 DOWN.

BULLS: MARKET STEADY. ALL WEIGHTS 1100-1900 LBS. 55.00-70.00.

VEAL CALVES: MARKET STEADY. CHOICE AND PRIME 200-400 LBS. 84.00-91.00; HI GOOD AND LOW CHOICE ALL WEIGHTS 63.00-72.00.

FARM CALVES: MARKET STEADY. HOL. BULLS 100-125 LBS. 140.00-155.00; HOL. BULLS 85-95 LBS. 125.00-143.00; HOL. HEIFER CALVES 100-120 LBS. 160.00-190.00; SMALL FRAME 70-105 LBS. 140.00-165.00;

SLAUGHTER CALVES ALL WEIGHTS 48.00-65.00.

FEEDER CATTLE: MARKET STEADY. BULLS & STEERS 400-900 LBS. 74.00-93.00; HEIFERS 300-700 LBS. 66.00-85.00.

LAMBS: MARKET 2.00 HIGHER. CHOICE & PRIME 90-110 LBS. 78.00-88.00; LIGHTER LAMBS 75.00-96.00; EWES - HEAVY 21.00-30.00; EWES - LIGHT 33.00-45.00.

GOATS: MARKET STEADY. SMALL 18.00-30.00; MEDIUM 30.00-50.00; LARGE 60.00-110.00.

HOGS: MARKET STEADY. 210-250 LBS. 41.00-44.00; 255-300 LBS. 38.00-42.00; SOWS - HEAVY 39.00-42.00; SOWS - LIGHT 35.00-39.00; BOARS ALL WEIGHTS 30.00-33.00.

Belleville

Livestock Auction

Belleville, Pa.

Wednesday, April 28, 1993

Report Supplied by Auction

CATTLE 192... Supplied by the auction .. Supply includes 100 head dairy cows and heifers . STEERS: one Choice Holstein 71.10, Good 65.00-70.50. HEIFERS: one Good Holstein 58.10. COWS: Few Breaking Utility and Commercial 46.00-51.35, Cutter and Boning Utility 44.25-47.00, Canner and low Cutter 40.00-44.10. Shells down to 33.00. BULLS: No. 2 51.00-54.10. FEEDER CATTLE: Steers 75.00-117.00, Heifers 63.00-73.00, Bulls 50.00-83.00.

CALVES 101... VEALERS: Utility 60.00-71.00. FARM CALVES: No. 1 Holstein bulls 105.00-165.00, No. 2 140.00-172.50.

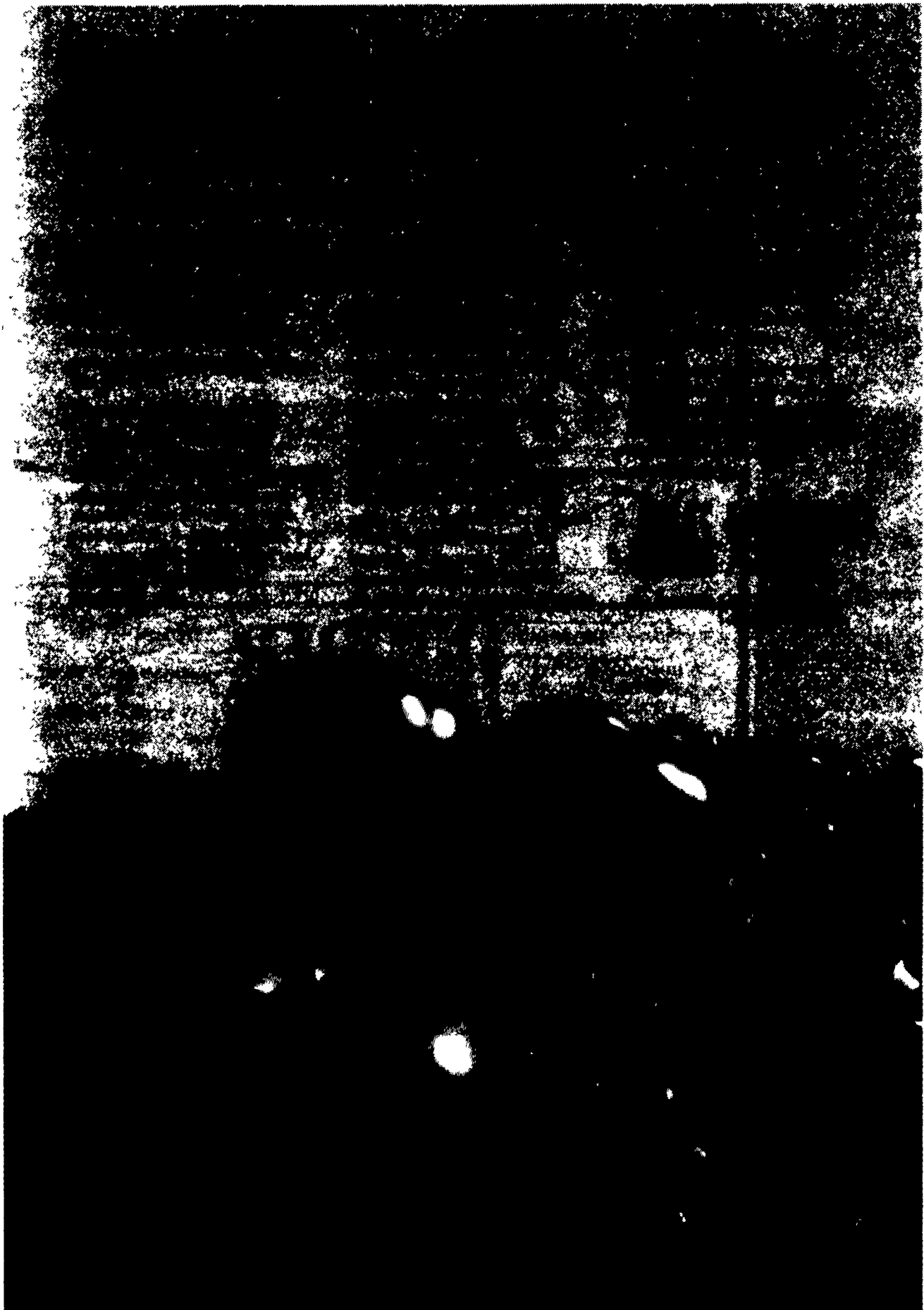
HOGS 122... BARROWS AND GILTS: US No. 1-2 42.25-44.15, US 1-3 40.00-42.50, 2-3 38.00-40.20. SOWS: 1-3 36.00-40.00, 2-3 28.00-35.50. BOARS: 29.50-31.00.

FEEDER PIGS 222... US No. 1-3 40/55 lbs. 45.00-55.00, 30/40 lbs. 36.00-48.00, 20/30 lbs. 28.00-35.00. --- all per head.

SHEEP 36... Choice 80.00-108.00, Good 74.00-81.00, Utility 50.00-77.00 Slaughter sheep: 21.00-32.00.

GOATS 12... Large 20.00-52.00. --- all per head.

DAIRY COWS... \$750.00-\$1400.00. --- per head.



SPECIAL SHORT NOTICE

MAY 4, 1993 At 1:30 P.M.

FEEDER STEERS
Steers and Heifers
75 HEAD

VINTAGE SALES STABLES, INC.

For More Information Contact:

L. ROBERT FRAME, SR.
OFFICE (717) 442-4181
OFFICE (717) 768-8204
HOME (215) 458-8518



Our Shell Can Help Your Shell Make it to Market

American Stone - Mix pure reef oyster shell can help you produce more marketable eggs with good strong shells.

THE FOX
NEWFIELD, N.J. 08344
FAX 908/887-1982 Phone 908/257-7022
BROADWAY, VA BELLEVILLE, DEL LITITZ, PA



See Your Fertilizer Dealer