

1

FARM EQUIPMENT

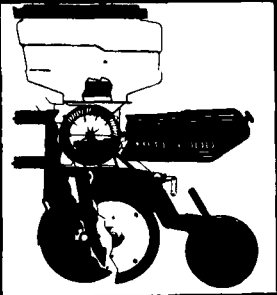
WHITE 6100 SERIES AIR PLANTER

In Stock Now - Give Us A Call!



There's A Size & Type For You

- Easy Set-Up & Adjustment
- Precise Depth Control
- Adjustable Downpressure For Proper Closing
- Large Capacity Means Fewer Stops
- Adapts To All Soil Conditions
- Sizes 4 Row Narrow To 12 Row Wide



WHITE
BY WHITE-NEW IDEA

Accuracy You Can Depend On!

USED EQUIPMENT SPECIALS

- Gehl MX100 Grinder Mixer w/Scales
- Hedlund-Martin 1678 Scavenger Spreader
- Brillion 12 Ft. Packer - 4" Axle, 18" Wheel
- Gehl 4500 Skid Loader, 40 HP
- Kuhn GR25 3 Pt. 42" Tiller
- White 5100 4RN Planter- Nice
- White 5100 6RN Planter- Nice
- New Holland 890 Harvester Hay Pickup
- Dunham 14 Ft. Packer
- Dunham 15 Ft. Mulcher, New Paint
- IH 13 Ft. Mulcher- Good
- IH 574 Diesel Tractor
- Oliver 1855 Diesel Tractor
- John Deere 3 Pt. Sickle Bar Mower
- John Deere 1209 Windrower
- Wic 11 HP Bedding Chopper
- Wic 8 HP Bedding Chopper
- Hesston 1085 9 Ft. Windrower-Nice
- Gehl 1580 Forage Blower
- Bushhog 207 7 Ft. 3 Pt. Rotary Chopper
- JD 4RN 494A Corn Planter- Nice
- Brillion 10 Ft. Pulvimulcher
- IH 35 Hayrake, Hyd. Drive
- Vicon 3 Pt. 22 Ft. V-Wheel Rake
- Deutz-Fahr KH500 17 Ft. Pull-Type Tedder

Umberger's of Fontana, Inc.

8 miles E. of Hershey on Rt. 322 Rt. 4, Box 545, Lebanon, PA 17042

717-867-5161

HOURS: Mon.-Thurs. 7:30-6, Fri. 7:30-8, Sat. 7:30-4

NH 1890 Harvester w/4RN Corn Head, Hay Head, Good Condition, Field Ready
\$15,000
717/548-4027

806 Farmall With Cab, Front End Loader, Tires Like New & Real Good Condition
\$6,700
215-869-9505

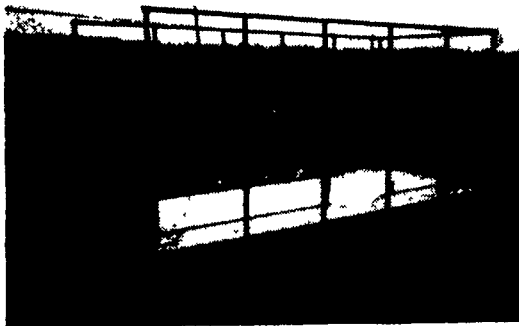
DILLER EQUIPMENT

Call Anytime, Except Sunday

Chambersburg, PA 17201

Call or Write For Free Literature (717) 369-2691

(800) 523-8002



A WAGON BUILT TO LAST-ASK OUR CUSTOMERS

- All steel bed frame - scheduled #40 pipe side racks
- Sides easily removed - Side gates open under pressure
- Treated lumber flooring - screwed down
- Formed steel side rails - steel bumper
- Rear gate swings 270° either way
- Standard size: 8x16, 8x18, 8x20, 9x18, 9x20, 9x24
- Also just side racks available



DEALERS

Binkley & Hurst
Litz, PA
(717) 626-4705

Chambersburg Farm Service
Chambersburg, PA
(800) 447-6830

R & W Equipment
Carlisle, PA
(717) 243-2686

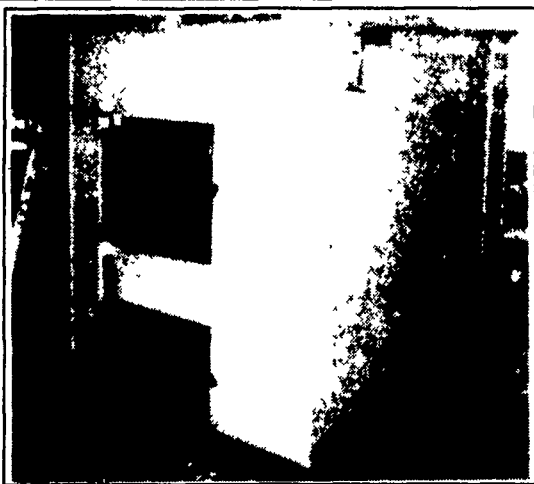
Barndt Tractor Farm
Ottsville, PA
(215) 795-2281

D.J. Implement
Dayton, VA
(703) 879-9926

Snyder's
Watsonstown, PA
(717) 538-5555

Harry L. Calabine, Jr.
Beavertown, PA
(717) 658-8007

Wineland Equipment
Martinsburg, PA
(814) 793-2109



Model 200MF Stainless Steel. Finished in-plant and ready to ship.

Get Comforting Heat and Efficiency.

The Mahoning Outdoor Multi-Fuel Furnaces provide thermostat controlled heat by economically burning wood, coal or fuel oil. The furnace is placed 25-100 feet outside the structure to be heated; connections between the furnace and building are buried underground. Wood or coal is the primary burning fuel lasting 8-12 hours in the furnace. For convenient, automatic firing the separate oil burner combustion chamber can provide heat until wood or coal burning is desired. Both Wood/Coal & the Fuel Oil burners are enclosed to heat the same water tank. The purpose of the firebox is to heat the water-filled tank surrounding the outside unit, this heated water is then circulated through underground pipes into your home. A heating coil is installed inside your existing heat system. The thermostat controls the blower which picks the heat off the coils and delivers warm air through existing ducts and registers. There are safeties which eliminate the danger of over-pressurizing the system and automatic shutdown in case of a power failure. The Mahoning Outdoor Furnace can also be connected to an existing hydronic heating system, that operates at 180° F or less, using fin tube baseboard, cast iron radiators or hanging hydronic heaters. Only the thermostat and heating coils are installed inside your home, eliminating open fire dangers, smoke, dust and messy kindling wood boxes. Adjust the thermostat for the Mahoning Outdoor Furnace to your comfort setting and it automatically controls the water pump and blower to circulate heat to your home. You may set the thermostat for your existing heat system to back-up the Mahoning Outdoor Furnace when not in operation or in case the firebox is left to burn out. An Aquastat senses the temperature of the water in the outside unit and automatically adjusts the combustion rate to maintain the correct temperature (normally 180 degrees).

Hot Water too...

A Mahoning Outdoor Furnace is a heat exchanger. By running a cold water line from your home to the outside unit, fresh household cold water can be heated and returned to the hot water plumbing in the house. A tempering valve adjusts the hot water at the faucets to a range of 120° to 180°. This boiler system will adapt to any existing plumbing. Heat your pool & hot tub with energy generated by a Mahoning Outdoor Furnace!

For more information see your nearest dealer.

MAHONING



We have a variety of styles & sizes, and one to fit your home/business heating needs!

OUTDOOR FURNACES

Cut Your Heating Costs

With Our Outdoor Furnace!

WOOD • COAL WOOD • COAL • OIL

- STANDARD MODEL - - MULTI-FUEL MODEL -

Approved for Natural or LP Gas
Heat Your Home, Farm or Commercial Buildings with Mahoning Outdoor Furnaces

Safe - Efficient - Durable

Look at what makes the Mahoning Outdoor Furnace a great purchase...
CLEAN. All dirt, dust, fuel and fire is outside. No chance of chimney fire or flue fire.
ELIMINATES AIR POLLUTION IN THE HOME. Smoke, fuel odors and other causes of allergies are outside the home.
SAFE FOR MOBILE HOMES. Eliminate a danger that other furnaces contained in a mobile home can cause.

NO DANGER OF EXPLOSION. This is a zero pressure furnace.
ENCLOSED COMPONENTS. The circulation pumps and electrical connections are enclosed in an insulated cabinet on the back of the Mahoning Outdoor Furnace.
ADAPTABLE. Install our furnace in any forced air heating or hot water system.
OUTSIDE SHAKER HANDLES. Coal burning and ash removal made easy.

- CATALYTIC COMBUSTOR -

With the aid of Corning Company, we were able to design a catalytic combustor unit that is proven to provide the following:

- 1) Cut emissions by 80%.
- 2) Improve burning efficiency by 80%.
- 3) Efficiency rating of 83 to 85%.
- 4) Makes furnace more user friendly & neighborhood acceptable.
- 5) No more smoke belching!
- 6) Use 1/3 less wood to heat your home!

Proudly Built in Indiana County Pennsylvania
MAHONING MANUFACTURING

Mahoning Outdoor Furnace Co.

R.R. Box 210, Rochester Mills, PA 15771 (412) 286-9959

FOUR SIZES:

Standard Model - Wood or Coal

Multi-Fuel Model - Wood, Coal or Oil

Model 100S both supply up to 100,000 BTU's per hour
100MF 24 inch long fire box

Model 200S both supply up to 200,000 BTU's per hour
200MF 36 inch long fire box

Model 300S both supply up to 300,000 BTU's per hour
300MF 48 inch long fire box

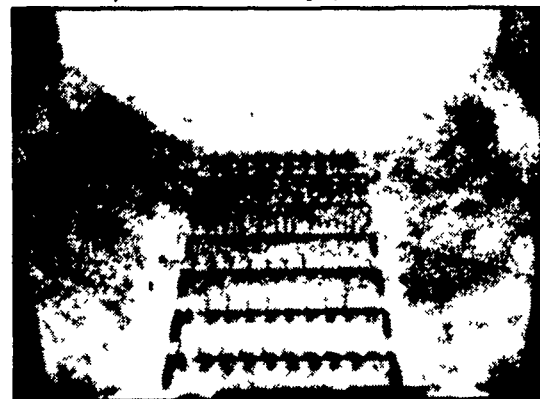
Model 400S both supply up to 400,000 BTU's per hour
400MF 60 inch long fire box

Models and specifications subject to change without notice.

MAHONING OUTDOOR MULTI-FUEL FURNACE

CONSTRUCTION FEATURES:

- 22 ga. steel exterior
- 1/4 in. plate steel firebox
- 3 ft. smoke stack of 26 ga. stainless steel (9 ft. opt.)
- 3/16 in. plate steel water tank
- 2 in. foam insulation board cover underneath
- 8 in. legs with skids for easy handling.
- Shaker grates with external shaker handle.
- Large ash pit and large clean-out door for easy ash removal.
- Furnace water level gauge and water temperature gauge.
- Primed and painted finish (stainless steel opt.)
- Burns wood cut 24" to 60" depending on model.



Shaker Grate with Exterior Shaker Handle makes ash removal easy.

LOOK TO MAHONING OUTDOOR FURNACE FOR EASY, WARM INEXPENSIVE LIVING!