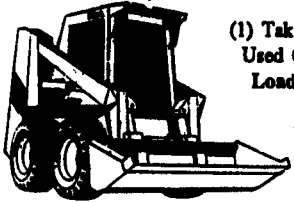


## Best Buys In Used Equipment

### Used Skid Loaders And Backhoe Loader Tractors and Industrial Loader Tractors and Crawler Loaders And Excavators and Forklifts

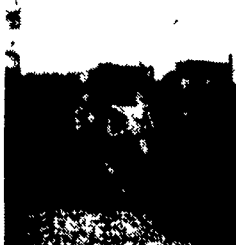


(1) Take Your Pick From Good Used Gohl 4610 Diesel Skid Loaders: 44 Perkins, Self-Leveling Loader, 10:00x16.5 Tires, 65" Bucket

- (2) UM2192 Case 24" Trenching Bucket, Excellent Cond.
- (3) UT2796 1991 Case 1845C, Only 469 Hrs. With Hyd. Detach Bucket, Quick Coupler, New Rubber, Aux. Hyd.
- (4) Case G530B Gas Powered Industrial Loader Tractor
- (5) UT2807, 1991 Case 1840 Unloader 50 HP w/Only 370 Hrs. And Aux. Hyd.
- (6) UT2808 Case 1840 Diesel Unloader
- (7) Case 580K TLB Extindahoe 4x4 Cab
- (8) UT2758 IH Diesel Model 4140 Skid Loader With 72" Bucket, Lights and Block Heater
- (9) UT2718 1984 Case 1835B Diesel Unloader 2300 to 2400 Hrs. With All New Hydraulic Drives (Best Offer)

- (10) UT2738 Case 580B Diesel Industrial Loader Tractor With Power Shuttle And Partial Cab And Rear Centerweight
- (11) UM2180 Set of 6 Block-Tines For Case - Harlo - Deere Forklifts
- (12) UM2208 Model 35 Backhoe Extendable Attachment To Fit Case 580C or 580B
- (13) UT2785 Case 1830 Unloader 30 HP Gas Engine Just Rebuilt With 60" Bucket
- (14) Pettibone 88 Extindahoe 8000 Lb. Forklift, Extends Forward 17 Feet, 34' Height, 4 Wheel Drive
- (15) Case 1450B Crawler-Loader Approx. 16% Tons, 2 1/2 Yd. Bucket, Financing Available With Credit Approval

- (16) Case 580B Industrial Diesel Loader Tractor, Power Shuttle, Forward & Reverse Trans., Good Brakes Runs Nice...\$6,900



## USED MACHINERY SALE

- (1) UM2247 New Holland #28 Forage Blower (Used To Fill Only 1 Silo) Like New 540 PTO
- (2) John Deere 950 Cultimulcher 12 Foot With Inside Transport Wheels, New Shovels Last Year, Rollers Good.
- (3) UM2230 New Holland 311 Baler Horse Drawn In Good Condition With Rebuilt Engine
- (4) Motor Home With Fixtures, Dodge Power Automatic With Air Cond, Generator, Sleeps 8, Ask For Isaac or Amos Or Leonard
- (5) UM2152 Allis Chalmers Model 600 Plate Planter 6 Row x30" Spacing, Double Disc Seed Openers, Good Condition \$895
- (6) UM 2240 John Deere Model 7000 Planter With Liquid Fertilizer, 6 Row 30" Spacing
- (7) UM2234 Case 7 Shank Coulter Chisel Transport
- (8) UM2245 Oliver Model 565 Spring Trip Plow, 4 Bottom 16" 3 Pt. Slat Bottom.....\$695
- (9) UM2244 5 Shank Sub Soiler Ripper.....\$500
- (10) UM2246 Allis Chalmers Model 2500 Transport Wing Disk Harrow 17 Foot Centerfold
- (11) UM2249 12 Foot Cultipacker With 17" Rollers.....\$595
- (12) UM2250 12 Foot Oliver Transport Field Cultivator.....\$950
- (13) UM2226 Gohl 3038 2 Row Com Head, Demo.
- (14) UM2237 New Idea Model 218 Tandem Axle Manure Spreader
- (15) UM2236 Allis Chalmers Pull Type Field Cultivator, Hydraulic Wing Fold, 16 Foot
- (16) UM2153 John Deere 7000 8 Row Planter
- (17) UM2222 John Deere FB-B Grain Drill 13x7 With Grass Seeder
- (18) UM2187 John Deere 6x30 Conservation Planter
- (19) UM2198 New Idea 325 2 Row 30" Picker With 12 Row Husking Bed
- (20) UM2202 M.F. 345 Plow 3 Bottom Auto Reset, Almost New
- (21) Heaton Model 6650 14 Foot Self Propelled Mower Conditioner With Cab & Air, Perkins Diesel Power, 18.4x16.1 Tires, Snub Guards, Completely Serviced, Good Condition, Priced To Sell, Let's Get Together Now!
- (22) UM2190 New Holland 316 Baler Late Model, Used Only 4 Years, With No. 75 Pan Thrower And Gandy Applicator In Very Good Condition
- (23) UM2194 IH Model 140 Roll Over Tumble Plow, 4 Bottom 16" Very Good Condition
- (24) IH 21x7 Grain Drill, Single Disc, Seed View Cups, In Good Condition, UM1995
- (25) IH Model 500 Transport Disk Harrow, 14 Foot With New 22" Blades On Front Gangs
- (26) UM2183 Country Boy Bin On Gear, Like New
- (27) UM2122 John Deere 145 Plow 5 Bottom 16" With New Coulters Last Year
- (28) UM2095 Like New! Case IH Model 710 Front End Loader, Heavy Duty Quick Attach With Self Leveling And 96" Bucket, Come & See
- (29) UM2131 John Deere 1530 12 Foot Dual Wheeled Transport Disk Harrow, Complete With Cylinder & Hoses
- (30) UM2167 Zimmerman 3 Axle 9 Ton Trailer In Good Condition
- (31) UM2142 Sunflower Soil Finisher Like New Model 6211-13, 13 Foot With Walking Tandem Transport
- (32) UM2146 18 Foot Sunflower 1232-18 Disk Harrow Rockflex Used 2 Seasons, Traded On Larger Unit
- (33) UM2154 Donahue Tandem Axle Machinery And Round Bale Carrier
- (34) UM2206 Lilliston No-Till Drill Model 9680, 18x7 Double Hopper, Double Disk With Cylinder And Hoses, Rear Hitch And Acreage Meter
- (35) UM2199 Used Set Of 20.8x38 Axle Duals With 30% Tread For IH 3 1/2" Axle
- (36) UM2203 White 508 Semi-Mount 4 Bottom Moldboard Plow, Spring Auto
- (37) UM2196 Marlin Pit Pump 12 Foot x 6" on 2 Transport Wheels With Hyd. Drop In, Good Condition
- (38) UM2204 1000 Gallon Top Fill Manure Tanker With Hyd. Gate Valve
- (39) UM2217 23 Foot Brillion Wing Packer With Long Tongue Priced Right

## USED TRACTOR SPECIALS

Come & Make Your Deal!

- (1) UT2797 Case IH Magnum 7110 All Wheel Drive Cab & Air, Loaded With Some Factory Warranty Like New Only 780 Hrs. \$49,500 With 10.9% Financing Available With Credit Approval, Rated 130+ HP
- (2) UT2782 Case IH 685 Cab Only 1096 Hrs., 62 HP Rated, Like New, With Air Condition & Heater
- (3) UT2798 1992 Magnum 7120 All Wheel Drive Tractor Rated 150 HP Plus, Dual Shaft PTO, Cab & Air, 20.8x38 and 20.8x38 Factory Duals, With Warranty, Lots Of Other Fine Features And Options, Only 1248 Hrs., Like New!.....\$56,900
- (4) UT2814 Case IH 1594 2 WD ROPS Tractor, Rated 85 HP With Power Shift, 740 Hrs., 540-1000 PTO, 15.5x38 Power Adjust Rear Wheels
- (5) Ford 881 Gas With 730 Industrial Loader With Independent Hyd. Pump Powered.....\$3,900
- (6) IH 854 Loader Tractor
- (7) Case 970 (No Cab) 93 HP Rated Diesel With Power Shift, 540-1000 PTO, White Paint. We Sold New in 1976
- (8) UT2795 One Of A Kind IH 656 Wide Front Gas Powered With 15.5x38 Rear Tires, 3 Pt. Hitch, Hyd. Outlet, Very Very Nice!
- (9) UT2755 Case IH 585 MFD 4x4 Drive Rated, 52 HP, Approx. 1026 Hrs.
- (10) UT2745 Case 1290 Diesel Rated 53 HP, We Sold New, Only 1570 Hrs., A Beautiful Utility Tractor For Only \$8,500
- (11) Case IH 275 MFD With Ag Tires And Quick Attach Case IH Loader, Rated 31 HP, Approx. 550 Hrs. Only \$12,800 4 Wheel Drive With Power Steering
- (12) UT2766 Massey Ferguson 165 With Loader
- (13) UT2657 Case IH 685 2 Wheel Drive ROPS Tractor, Only 865 Hrs., 2 Speed, P. Shift Trans., 18.4x30 Rear Tires 75% and 10:00x16 Front Three, Dual Shaft 540-1000 PTO, Very Good, 1 Owner Tractor With 7.9% Financing Available
- (14) John Deere 31 HP Model 970 4WD With Rops, 6 Front End Weights, Less Than 20 Hrs., 9 Speed Trans, 12.4x28 Rear
- (15) Ford Model 8400 With Cab, Heater, 8 Speed With Dual Power, Engine Rebuilt, Dual Remotes, 540-1000 PTO, Nice Clean Tractor
- (16) Case 2290, Cab & Air, Factory Duals Rated Approx. 129 HP Varying Up To 140 HP, 540-1000 PTO



Ford 8600 Cab



62 HP Case IH 685 With Cab & Air, Like New; Only 1096 Hours



JD 4x4 970 Compact 30 HP Diesel Tractor Only 14 Hours

## BINKLEY & HURST BROS., INC.

133 Rothsville Station Rd., Lititz, PA 17543

Located 1/4 Mile North of Rothsville

(717) 626-4705 1-800-IT PAYS U



## GET READY FOR SPRING WITH YOUR FERTILIZER HANDLING EQUIPMENT FROM BINKLEY & HURST

SAVE \$\$\$ By Buying Your Fertilizer In Bulk By Using This Attachment On Your Truck



HYDRAULIC TRUCK AUGER 15' Folding & Other Sizes Or Pull This Gravity Bin With Auger Attachment Behind Your Pickup Truck And Fill Your Hoppers Without Lifting A Bag!

## BINKLEY & HURST BROS. INC.

133 Rothsville Station Rd. 1-800-IT PAYS U

Lititz, PA 17543 (717) 626-4705

After Hours Emergency Call: (717) 626-0885 (717) 626-5180 (717) 626-8788 Machinery Sales: M-F 7 to 5 Sat. 7 to 11:30 Sun. Closed - Lord's Day



Farm Plan A Service of FFC Financial

## CALL MERV TODAY AT BINKLEY & HURST BROS. FOR HUSKY MANURE HANDLING EQUIPMENT

If You Are Building A New Manure Pit, Let Us Help You With The Right Equipment!

QUALITY BUILT

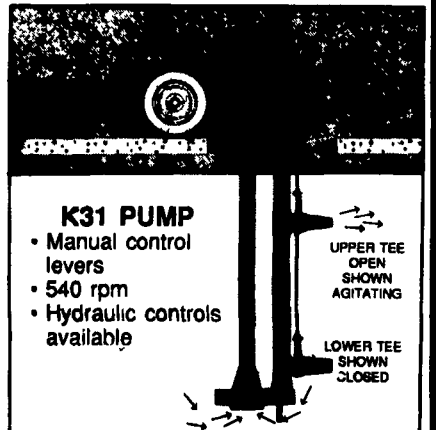
**HUSKY**  
FARM EQUIPMENT  
• SPECIAL LOW COST LEASING PROGRAMS AVAILABLE - If Your Future Plans Call For Manure Handling In Your Operation, You Need To Meet Our Salesmen With Many Years Of Experience!

## TOP FILLS **HUSKY** LIQUID MANURE SPREADERS

For Fast Hauling Pick A Spreader Size To Suit Your Tractor. Every HUSKY Tank Is Made

From Heavy Gauge Alloy Steel Carefully Lined With A Special Coal Tar Epoxy Liner.

MAKE SURE YOUR EQUIPMENT IS "HUSKY BUILT"  
The Name That Describes The Quality!



### K31 PUMP

- Manual control levers
- 540 rpm
- Hydraulic controls available

UPPER TEE OPEN SHOWN AGITATING

LOWER TEE SHOWN CLOSED

## **HUSKY** VACUUM TANKERS VACUUM LIQUID SPREADER

### FEATURES

- 6mm tank with dished ends
- New tanker lined inside against rust with special coating
- Fully baffled
- Access hatch

- Level sight gauge
- 210 CFM vacuum pump, larger than normal size
- 6" (150mm) vac hose
- Secondary moisture trap
- Positive float shut off
- Vacuum pump supplied with high heat vanes



With 2 Full Ports 1 Rear and 1 Side  
**Call For A Super Deal!**  
5 YEARS UNCONDITIONAL AXLE WARRANTY  
QUALITY BUILT IN

See Us For All Your PARTS & SERVICE NEEDS Related To Vacuum Equipment!

(We Stock Vacuum Pumps)

EXTENDED PARTS DEPARTMENT HOURS NOW IN EFFECT!

Mon., Tues., Thurs., Fri. 7:00 to 8:00  
Wed. - 7:00 to 5:00  
Sat. - 7:00 to Noon

### HAULING TANKS If You Have A Special

Truck Or Flotation Vehicle, Husky Can Help To Make The Mounting Easy



WE NOW CAN INSTALL YOUR TRUCK MOUNT TANKER WITH SPECIAL DRIVE CLUTCH SYSTEMS AVAILABLE!

## BINKLEY & HURST BROS. INC.

133 Rothsville Station Rd. 1-800-IT PAYS U

Lititz, PA 17543 (717) 626-4705

After Hours Emergency Call: (717) 626-0885 (717) 626-5180 (717) 626-8788 Machinery Sales: M-F 7 to 5 Sat. 7 to 11:30 Sun. Closed - Lord's Day



Farm Plan A Service of FFC Financial