


1989 Ford F-350 4x4 Diesel Truck, 7.3 Liter, 4000 Original Miles w/Custom Mounted GVM, 500 Gal. Spray Rig w/40' Booms and Foam Markers, Like New
Only \$23,900
LESTER ZIMMERMAN
 Myerstown, PA
(717) 949-3582



1979 Chevy Cattle Truck
 350, 4 Speed,
 10 Ft. Alum. Box
\$5,250
717-328-2881
or 717-597-9516

REEDMAN LEASING
2100 CARS-TRUCKS
 *All Cars Below Equipped With Auto Trans, Air Cond, PB, PS, & Stereo.

'93 NEW JAGUAR XJ6 SDN \$539.00
 Per Month For 36 Months. Closed End Lease. Stock #92059 6 Cyl VIN PC676280 MSRP * \$53,133 Total Of Monthly Payments \$19,904.00 With \$2500 Down

'93 NEW CORVETTE CONVERTIBLE \$439.00
 Per Month For 36 Months. Closed End Lease Stk #15082 6 Cyl VIN P8197073 MSRP * \$44,364 Total Of Mthly Payments \$15,804 With \$4000 Down

'93 NEW LINC MARK VIII \$376.00
 Per Month For 24 Months. Closed End Lease. Stock #99536 8 Cyl VIN PY667386 MSRP * \$37,230 Total Of Monthly Payments \$9,024.00 With \$3000 Down 11* Per Mile Over 30,000

'93 NEW LINC TOWN CAR \$394.00
 Per Month For 24 Months. Closed End Lease. Stock #99001 8 Cyl VIN PY602431 MSRP * \$34,780 Total Of Monthly Payments \$9456.00 With \$3000 Down 11* Per Mile Over 30,000 Miles

'93 NEW LINC CONTINENTAL \$327.00
 Per Month For 24 Months. Closed End Lease. Stock #99004 6 Cyl VIN PY602337 MSRP * \$33,918 Total Of Mthly Payments \$7848 With \$3000 Down 11* Per Mile Over 30,000 Miles

'93 NEW CHRYS NY SALON \$199.00
 Per Month For 36 Months. Closed End Lease. Stock #90005 6 Cyl VIN PD102717 MSRP * \$20,000 Total Of Mthly Payments \$7184. With \$2200 Down

'93 NEW DODGE STEALTH \$273.00
 Per Mth For 48 Months. Closed End Lease. Stk #96007 6 Cyl VIN PY005783 MSRP * \$21,726 Total Of Mthly Pymts \$13,104 With \$1500 Down Total Of 55,000 Mi

'93 NEW MERC GRAND MARQUIS GS \$297.00
 Per Month For 24 Months. Closed End Lease. Stock #91196 6 Cyl VIN PX656425 MSRP * \$23,807 Total Of Mthly Payments \$7128 With \$2500 Down

'93 NEW MERC SABLE GS \$219.00
 Per Month For 24 Months. Closed End Lease. Stock #94501 6 Cyl VIN PA600119 MSRP * \$18,140 Total Of Monthly Payments \$5256 With \$2000 Down 11* Per Mile Over 30,000 Miles

'93 NEW PLY VOYAGER \$201.00
 Per Month For 36 Months. Closed End Lease. Stock #76104 4 Cyl VIN PR151655 MSRP * \$15,595 Total Of Monthly Payments \$7236 With \$1500 Down

SHOP REEDMAN BEFORE YOU BUY LEASE OR RE-LEASE A CAR OR TRUCK

FLASH! If You Still Have Payments On Your Present Leased Car Or Truck We Would Like To Bid On Your Lease For A New Vehicle, Individual Lease, Or Company Leasing.

'93 NEW T-10 BLAZER 4x4 4 Dr \$247.00
 Per Month For 48 Months. Closed End Lease Stk/ T-5329 6 Cyl VIN P2164174 MSRP * \$20,799 Total Of Mthly Pymts \$11,886.00 With \$1500 Down Total Of 55,000 MI

'93 NEW COUGAR XR7 \$279.39
 Per Month For 24 Months. Closed End Lease. Stock #93510 6 Cyl VIN PH602930 MSRP * \$16,698 Total Of Mthly Payments \$6705.36 With \$1500 Down

'93 NEW CHEV LUMINA 4 DR \$188.00
 Per Month For 36 Months. Closed End Lease. Stock #95301 6 Cyl VIN P9196642 MSRP * \$15,956 Total Of Mthly Payments \$6768. With \$2000 Down

'93 NEW OLDS CUTLASS SUPREME S CPE \$268.00
 Per Month For 36 Months. Closed End Lease. Stock #92017 6 Cyl VIN PD306913 MSRP * \$19,320 Total Of Mthly Pymts \$9648.00 With \$2000 Down

Closed End Leases
 First Monthly Payment Plus A Security Deposit Equal To One Monthly Payment Is Required Upon Delivery. Lessee May Have The Option To Purchase The Car At Lease End At A Price To Be Negotiated With The Dealer At Lease Inception. At The End Of The Lease If You Do Not Exercise Your Option To Buy You Will Pay A Mileage Charge Of 10¢ Per Mile For Each Mile In Excess Of 15,000 Miles Per Year Plus The Costs Of Any Excess Wear Or Tear.

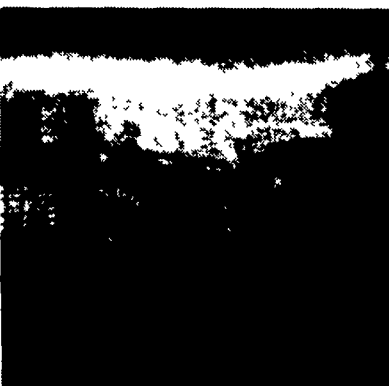
*** Price Includes All Cost To Be Paid By A Consumer, Except For Licensing Costs, Registration Fees & Taxes.**

CALL 215-757-4961
 Ask For Reedman Leasing Dept.
 Reedman Rte 1 Langhorne Pa.

Huntingdon Equipment

Rentals Available **GOOD USED EQUIPMENT**

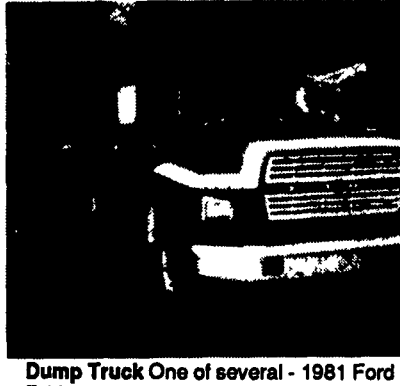
Huntingdon Valley, PA • 215-672-9667 • 1-800-543-3833 • Eddle



20 Ton P&H Crane 3 Sec. Hyd. Boom mounted on a 1968 F.W.D. both engine gas (new front 89), fleet maintenance.



Knuckboom Truck Ford 1980 8.2 Diesel, Flat Bed, Work Ready To Go.



Dump Truck One of several - 1981 Ford F-600, gas, auto. We also have five man cabs with dumps and air compressors.



1979 Utility Truck V8, Auto, 23,000 GVW, 45,000 Miles, Ready To Go To Work.



Need a Lift? We Have A Large Selection Of Boom Trucks Up To 14,000 lbs. Cap. Some With Post Diggers.



Bucket Trucks 28' to 65' Gas and Diesel. Call For Details.

DIGGER DERRICKS/AERIAL BUCKETS/UTILITY EQUIPMENT




CENTRAL PA'S LARGEST GM DEALER!


OVER 200 NEW AND USED TRUCKS IN STOCK!



PASSENGER & CARGO VANS
 New & Used, Gas or Diesel




'93 CHEVY 3500 1 TON SINGLE WHEEL CREW CAB
 6.5 L Diesel Engine



EXT. CAB & CREW CAB DUALY'S
 Centurion Conversions & Silverados In Stock
 7 To Choose From!
 2WD & 4WD Gas & Diesel
 (2) '92 Leftovers




CONVERSION VANS
 11 To Choose From!
 Hi-Tops & Low Tops Available




3500 HD CAB & CHASSIS
 6.5 L Turbo, Heavy Duty,
 15,000 GVW



'93 CHEVY S-10 BLAZER 4x4
 Tahoe Package
 Starting As Low As
\$16,900
 2 To Choose From




CHEVY SUBURBANS
 5 New & Used To Choose From
 2WD & 4WD Available




VAN BODY TRUCKS
 New & Used Available



'89 CHEVY STAKEBODY
 8 Cyl., 12 R. Stakebody,
 4 Spd., PS, PB, Low Miles



'92 CHEVY STAKEBODY
 1 Ton, Very Low Miles



The SUPERMARKET OF TRUCKS

(717) 274-1461 • PA (800) 222-5523

IF WE DON'T HAVE IT, WE'LL LOCATE IT!

1505 Quentin Rd.
 Rt. 72 - Lebanon
SALES HOURS:
 Mon.-Fri. 9-9
 Sat. 9-5