

1974 Ford F700, Gas, 5 & 2 Speed
25000# GVW, Will Take 16' or 18' Bed
\$2,650

1983 IHC Roll Back, V8 Gas, 5 & 2
Speed, 20' Bed, Runs and Works
Great, Was \$9,800
Now \$8,900

1978 Ford F700, Gas, 5 Speed,
Hydraulic Spreader, Central Hydraulics
\$3,295

1985 Chevy C20, Gas, 4 Spd, Set Up
For Pulling Trailers
\$5,195

1981 Chevy C30 Stake Body Truck,
V8 Gas, Auto, PS, New Paint, New
12' Stake Body
\$4,650

Hostetler Truck Bodies & Trailers
Rt. 322 Milroy, PA 17063
717-667-3921

LILLISTON POLARIS
609-691-2020
787 N Delsea Dr. Vineland NJ 08360

Polaris ATV's Now
In Stock,
SALES & SERVICE
Open
Extended Hours For
Your Convenience




- 1993 Polaris Indy Storm Snowmobile\$6395
- 1993 Artic Cat, Wildcat Snowmobile\$6399
- 1990 Polaris Indy 500 Snowmobile\$2395
- 1987 Polaris Indy Trail\$1799
- 1993 Polaris Personal Water Craft SL 750In Stock
- 1992 Polaris SL650 Low Hrs.\$4500
- 1992 Sea Doo XP Low Hours, Like New, Used Only In Fresh Water \$4600
- 1993 Polaris ATV 4x4, 250..... \$3,899
- 1993 Polaris ATV 2x4, 350..... \$4,099
- 1993 Polaris SL750..... \$6,099

Remember Only 3% Sales Tax On New And Used Water Craft, And Parts and Accessories

We Also Have A Full Service Shop, And Summer and Winter Storage Call Now For Summer Service Specials On Snowmobiles

YOUR NEWEST SOUTH JERSEY CONNECTION FOR ATVS, SNOWMOBILES PERSONAL WATERCRAFTS!



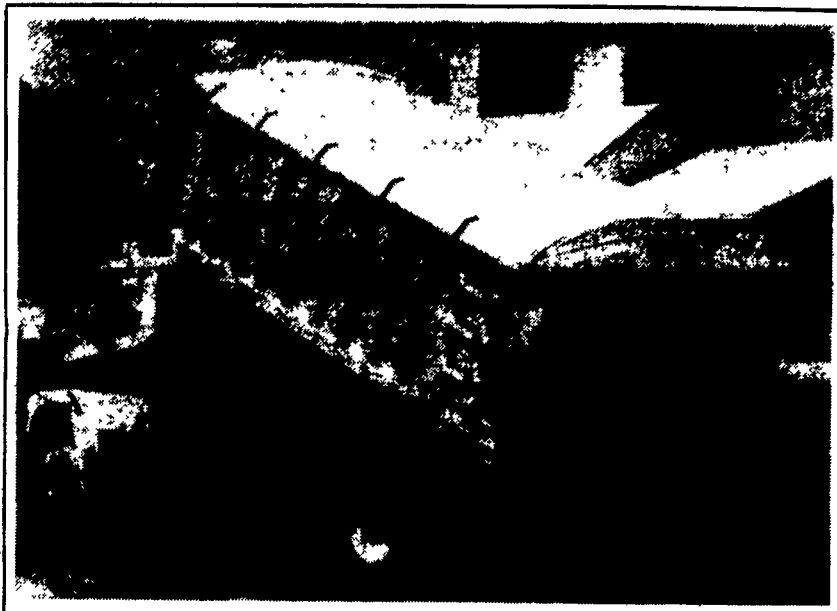
1979 Jeep Wagoneer 70,000 Original Miles, New Paint, Air, Cruise, AM-FM, Cassette, Nice
\$2,300 OBO

LESTER ZIMMERMAN
Myerstown, PA
(717) 949-3582

- 1992 Geo Metro XFI 3 Cyl., 5 Spd., AM-FM Green, 32,200 Mi. ...\$4,900
- 1991 Buick Century V6, AT, AC, CR Tilt, AM-FM Cass., Black, 55,200 Mi.....\$7,900
- 1991 Dodge Monaco LE V6 AT, AC, CR, Tilt, AM-FM Blue, 50,000 Mi.....\$6,400
- 1991 Geo Storm 4 Cyl., AT, AC, AM-FM, Cass, Green, 27,500 Mi.....\$6,900
- 1990 Mitsubishi Eclipse 4 Cyl., AT, Loaded, Maroon, 64,700 Mi.\$7,600
- 1989 Chevy Cavalier RS, 2 Dr., 4 Cyl., AT, AC, CR, Tilt, AM-FM Cass., Maroon, 63,900 Mi.\$4,400
- 1988 Chevy Astro CS 8 Pass., V6, AT, AC, Tilt, AM-FM Cass., Gray/Silver, 52,800 Mi.\$8,600
- 1988 Ford Mustang GT V8, 5 Spd., Loaded, Sunroof, Black, 47,600 Mi.....\$7,900
- 1988 Pontiac Bonneville LE, V6, AT, Loaded, Blue, 51,900 Mi.....\$7,600
- 1987 Ford Bronco II XLT 4x4, V6, AT, Loaded, Black/Gray, 67,000 Mi.....\$6,600
- 1987 Chrysler Lebaron GTS Turbo AT, Loaded, Black, 61,900 Mi.....\$4,900

Brubaker's Auto Sales
Myerstown, PA
717-866-5237

EBY AGRI-DUMP BODIES
Rugged...built like a heavy dump truck



Eby Aluminum Agri-Dump Bodies pay off in dependable long-term service. Their all-aluminum construction means:

- Greater payload efficiency
- Maintenance-free service
- Substantially higher resale value.

Eby's time-tested design is available in lengths to 24' for grain bodies and 10 1/2' for general purpose dump bodies. A long list of standard features such as tarp rail, built-in steps, aerodynamic uprights and Harsh hoist is complemented by a full range of custom options, including tailgates, Wahpeton tarps and grain chute.

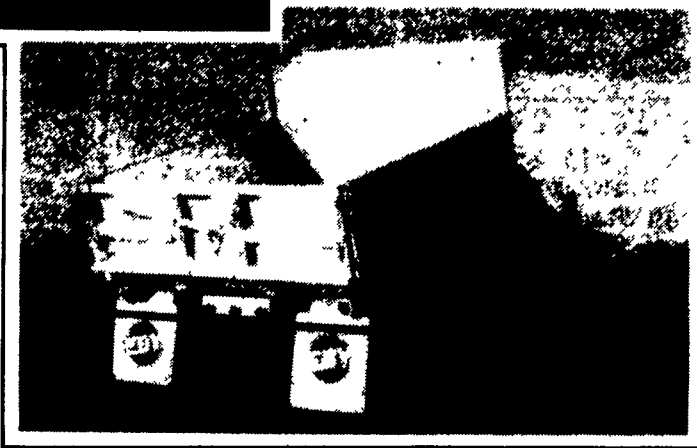
When you select your next grain body or general purpose dump body, consider the value that aluminum offers. It's a worry-free investment in your future.

CHECK OUT THESE FEATURES/BENEFITS

- Up to 40% lighter than steel, for greater payload
- Designed for long life
- Resale value
- Corrosion resistant, never needs painting
- Appearance to complement any truck
- Complete list of popular options, including tailgates, tarps and sides

STANDARD SPECIFICATIONS

- 6" heavy-duty extruded longitudinal sills
- 3" crossmembers on 12" centers on body lengths to 14'; 4" crossmembers on 12" centers on lengths over 14'
- 5"x1 1/4" extruded side posts, slanted for improved aerodynamics; 3"x2" heavy wall top rail
- .125" thick side sheets; .188" thick floor sheet (.250" thickness optional)
- Single acting tailgate with center flow chute, hinged top
- Rear ladder rung with step mounted on mud-flap bracket
- Includes mudflaps, aluminum splash shield, ICC-approved bumper and lights.



GRAIN BODIES

STANDARD LENGTHS: 12', 14', 15', 16', 17', 18', 20', 22', 24'

OVERALL WIDTHS: 96" standard, 102" optional

SIDE HEIGHTS: 48" standard, 54", 60" or 72" optional (other heights available on request)

GENERAL PURPOSE DUMP BODIES

—Ideal for landscaping work, construction, and hauling of loose aggregate or bulk commodities

STANDARD LENGTHS: 8', 8 1/2', 9', 10', 10 1/2'

OVERALL WIDTHS: 92" or 96" standard

SIDE HEIGHTS: 24" standard, 30" and 36" optional



M.H. Eby, Inc.
1194 Main Street (Route 23)
Blue Ball, PA 17506
(717) 354-4971 (800) 292-4752
FAX: (717) 355-2114

Call Kevin Seibert
Your Agri-Body Specialist

Committed to the Agri Transportation Business



USED EQUIPMENT SALE

POSSUM BELLY TRAILERS

- 1984 Barrett 48'x96"x13'6" Cattle Trailer Jailhouse
- 1983 Barrett 48'x96"x13'6" Cattle Trailer
- 1983 Wilson 45'x96"x13'4" Cattle/Hog Combo
- 1982 Wilson 45'x96"x13'2" Cattle Trailer
- 1982 Wilson 45'x96"x13'6" Cattle-Pot

STOCK TRAILERS

- 1989 10' Eby Bumper Hitch
- 1987 26' Eby Gooseneck
- 1986 20'x8' Aluminum Wallinga
- 1985 Super Goose 20'x6"x6'10"
- 1983 Eby 18'x7'6"x6'6" Gooseneck

BODIES



- 1993 21'x6'6"x96" Double Decker

Call For Special Pricing

- Omaha Steel Cattle/Grain Body, 14'x42" Sides
- (3) 12' Eby Aluminum Cattle Body
- 17' Eby Cattle Body
- 21' Eby Aluminum-Double Deck
- 20' Fruehauf - Deck-Rail & Decking
- 8 1/2' Eby Aluminum - Chicken Body

M.H. Eby, Inc.
1194 Main Street (Route 23)
Blue Ball, PA 17506
(717) 354-4971 (800) 292-4752
FAX: (717) 355-2114
4435 State Route 29
West Jefferson, OH 43162
(614) 879-6001 (800) 782-0507
FAX: (614) 879-6004

'74 C-65 Chevy 16' grain dump bed, HD, \$4,500 (301)898-7426

81 Int. 2600 tdm axle, 22' flat dump, w/grain sides, 56 GVW; 80 Int 1800, 20 ft. flat, w/grain sides, 27 GVW; 78 Ford P600 step van, 15 GVW, 74 Ford 750 Cab/chassis 27GVW; 65 GMC 5000, 22 ft van body, 27 GVW (609)358-0831

'85 Chevy Sport Van, 12 passenger, 350 auto, PB, PS, AM-FM cassette, mechanically good, needs paint, \$2,900 717-733-2873

'86 Ford 350 diesel, 80,000 highway miles, very good condition, \$9500 215/395-6557

'86 GMC High Sierra, HD, 1/2 ton, 305 auto, PB, PS, air, AM-FM, 6,100 GVW, 29,000 original miles, like new, 1 owner, \$6,700 717-733-2873

'87 Chevy C20 HD, 3/4 ton pickup, 350 FI, auto, PS, PB, air, AM-FM, dual tanks, 8,600 GVW, blue & white, \$7,400 717-733-2873

'87 Chevy C30 Silverado, 3+3, crew cab, 454 auto, PS, PB, PW, PDL, cruise, tilt, air, AM-FM, towing package, high rise fiberglass cap, 37,000 miles, like new 717-733-2873

'87 Chevy C20, HD w/new Reading utility body, 350 FI, auto, PB, PS, AM-FM, 8,600 GVW, 41,000 original miles, red, excellent condition, \$9,300 717-733-2873

'87 Dodge D350 LE Pickup, 47,000 miles, fully equip. Zartman Dodge. 717-626-8551

'87 Ford XL F250, 4x4 w/8' stake body, 351 auto, PB, PS, AM FM, dual tanks, 8,600 GVW, 41,000 miles, excellent condition, \$8,900. 717-733-2873