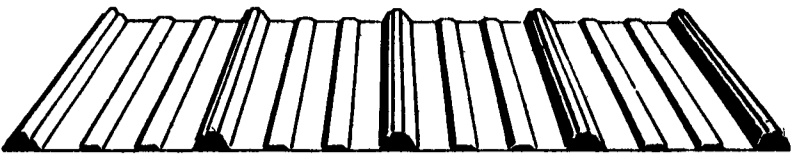


# Steel And Aluminum



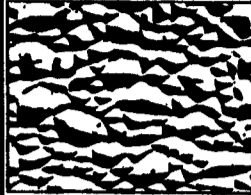
Specialists in metal roofing and siding. Special in price, quality and service. Please call this number: 1-800-325-1267 Thank you!

## Metal Roofing & Siding Co

987 Valley View Rd., New Holland, PA 17557  
(717) 354-2728

New and Used  
Structural Sch 40  
Pipe For Sale  
1/2" thru 8" Pipe.  
J & L Equipment  
St. Thomas, PA  
717-369-2637

Fiberglass  
**WALBOARD PANEL**  
FOR: Milkrooms,  
Parlors, Feed Mangers



Cap Division Bar Inside Corner and Cove

White & Colors  
4'x8' - 4'x9' - 4'x10'  
.090 Save 50%  
45¢-55¢/sq. ft.

ALSO: Full Line Of  
Roofing & Siding  
Large Inventory in  
Stock!  
Call For Low Prices!

**A.B. MARTIN  
ROOFING**  
Ephrata, PA 17522  
(717) 354-5076  
Pennyan, NY 14527  
(315) 536-0944

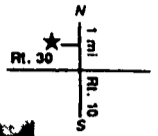
Lancaster Farming, Saturday, May 1, 1993-C15

## PORTABLE CUSTOM BUILT HORSE BARN



12x28 Horse Barn  
Up To 12' Wide 40' Long

- Custom Built and Delivered To Your Farm
- Also Suitable For Many Other Farm Animals
- Storage Sheds
- Two Car Garages
- Portable Garages



12x24 Portable Garage  
Up To 14' Wide 48' Long

**White Pine  
Structures**

N. Rt. 10 Parkesburg, PA (215) 857-3420

Call For Information, Price

## POLE BUILDINGS

CUSTOM DESIGNED & ENGINEERED

- COMMERCIAL □ AGRICULTURAL □ RESIDENTIAL
- HORSE BARN • ARENAS • GARAGES
- IMPLEMENT SHEDS

**BYLER  
CONSTRUCTION**  
Dennis E. Byler

FREE ESTIMATES

**717-866-6302**

## Top Brand Names, Low Dollar Steel And Aluminum



Super Panel - 26 Gauge

26 & 29 Gauge

- Painted, Galvanized & Galvalume
- Large quantity roofing doors, windows & trim in stock

We Delivery Anywhere  
IN  
PA, MD, NJ, DE,  
NY, VA, W VA

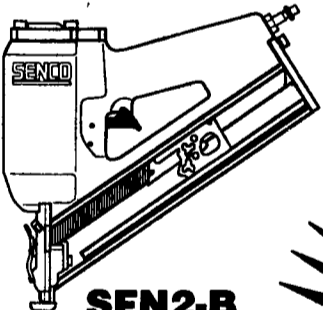
Call 1 (800) 964-1550 Anytime (215) 384-5942

Reuben Graber Home: (215) 383-5274

**CALN DOOR & SUPPLY**

Special Prices for a limited time

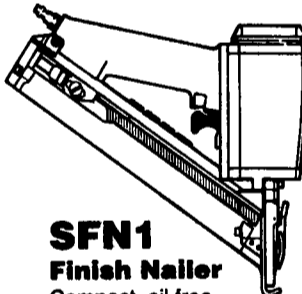
**SENCO**



**SFN2-B  
Finish Nailer**

Drives 1 1/2" to 2 1/2"  
Senco true brad head  
finish nails

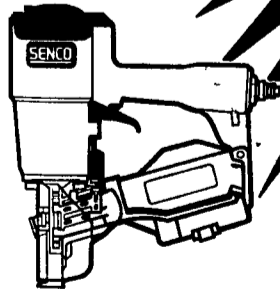
**\$349.**



**SFN1  
Finish Nailer**

Compact, oil free  
finish nailer that drives  
true 1" to 2" brad head  
finish nails

**\$275.**



**SCN200R  
ROOFING NAILER**

Packs, power and speed  
while obtaining accurate and  
consistent fastener placement.

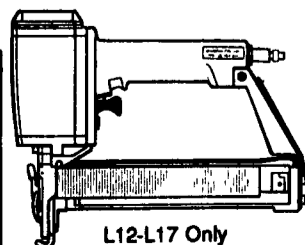
**\$395.**



**SN325+  
FRAMING NAILER**

Compact and powerful  
3 1/4" framing nailer  
weighs only 7.3 lbs.

**\$399.**



**SKS PowerPlus  
FINISH  
STAPLER**

Quiet & oil free for  
use in a wide  
variety of  
applications.

**\$240.**

Available at  
**BLUE BALL MACHINE CO. INC.**

1116 Division Highway  
Blue Ball, PA 17506

(717) 354-4478 Fax (717) 355-2611

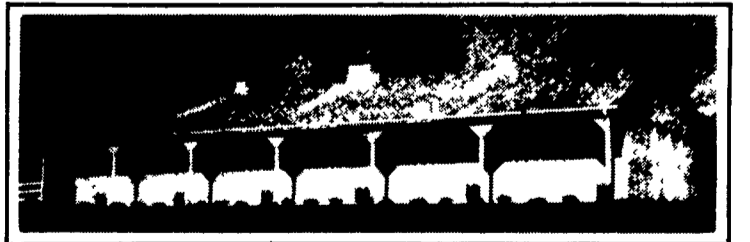
Store Hours: Mon.-Thurs. 7:30-5:00  
Fri. 7:30-9:00; Sat. 8-12

## AGRI-INC.

Custom Built Farm Buildings  
Designed To Your Needs



**RIDING ARENA**



**HORSE STALL BARN**

Let Our Experience Work For You

- Dairy Complexes And Replacement Stock Facilities
- Workshop And Machinery Storage Buildings
- Horse Stall Barns And Riding Arenas
- Timber Column Buildings For Light Commercial



**AGRI-INC.** The Construction Professionals

151 E. Farmersville Rd., Ephrata, PA 17522  
(717) 354-4271

Serving The Agricultural Industry For Over 25 Years

