

# Batching Scale Indicator Uses Scrolling Messages



EZ320 batching electronic scale indicator designed for multiple batch weighing for livestock feeding, allows the operator to program and store a combination of 81 recipes and ingredients for multiple batching applications.

FORT ATKINSON, Wis. — J-Star Electronics, has introduced its new EZ320 batching electronic scale indicator.

The new EZ320 makes operation and programming a snap with its scrolling messages and help key. It's like having the operation manual with you all the time. Just push the help key and a scrolling message prompts you as to what to do next.

Designed for multiple batch weighing for livestock feeding, the EZ320 allows the operator to program and store a combination of 81 recipes and ingredients for multiple batching applications. The new EZ320 also automatically adjusts the ingredient amount to accommodate batch size changes without reprogramming the indicator, and will print recipes if needed from memory.

The EZ320 also features a mix timer and alarm which can be set by the operator to avoid possible

over mixing of the ration. An adjustable pre-alarm also alerts the operator that the scale is nearing the pre-set value. Another standard feature is a new large LCD with a long life fiberoptic backlight for easy reading day or

night. The EZ320 is also adaptable to most other manufacturers load cells.

For more information, contact Al Hannam, J-Star Electronics, 801A Janesville Ave., Fort Atkinson, WI 53538, (800) 225-7695.

## 35 TRUCKS & TRAILERS



18' Steel Dump Truck Body w/Hydro \$2400 OBO

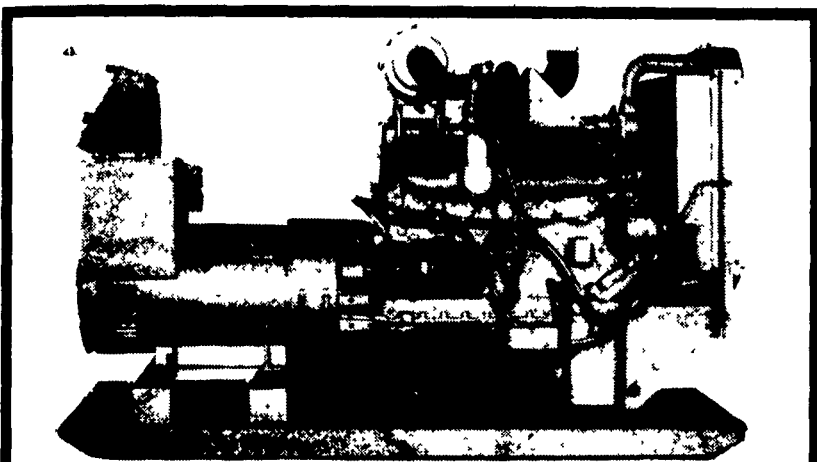
14' Steel Dump Truck Body, w/Hydro Good Cond. .... \$2100 OBO  
16' RS Alum. Dump Truck Body w/Hydro, Like New ..... \$6,500 OBO

(717) 235-0555

## BUY, SELL, TRADE OR RENT THROUGH THE CLASSIFIED ADS

PHONE: 717-626-1164 or 717-394-3047  
FAX 717-733-6058

Mon., Tues., Wed., Fri. 8 AM to 5 PM; Thurs. 7 AM to 5 PM



Automatic Systems

### NEW

- 1 - 30 KW Diesel
- 1 - 30 KW LP Gas
- 2 - 50 KW PTO

### USED

- 1 - 10 KW Gas
- 1 - 15 KW P.T.O.
- 1 - 10 KW P.T.O.

24 HR SERVICE

## MAXI-POWER

RADIO DISPATCH

330 Fonderwhite Rd. Lebanon, PA 17042  
717-273-4544 1-800-272-MAXI

## 4 BUILDINGS AND SUPPLIES

1000' 2x12 white pine barn flooring. Daniel L. Stoltzfus, 92 Snake Hill Road, Bird-in-Hand, PA 17505.

(24) 36"x49 1/2" steel vertical bi-fold windows w/ glass, \$25/ea 717-786-3437.

2 SHOP BUILDINGS FOR SALE. New, must sell, Can deliver. Call now. 609-586-1250.

Tobacco barn, center aisle, 60'x37', to be dismantled, best offer. (717)361-8668.

Allied Steel Buildings, Commercial, Industrial, Agricultural. Building YOUR Business is OUR Business. A.S. HOOVER INC. 3125 Manor Road, Coatesville, PA 19320 1-800-942-2591, 215-942-2591

Antique building materials, beams, wide pine boards, flooring, doors, etc 717/249-2304

Plastic Sheets up to 1/4" Thick, Glass Board Sheets and Rolls, Fiberglass Roofing "B" Grade Material Glenn Beidler, Freeburg, PA, Snyder County (717)539-8993

Buying Old Building Lumber, Siding, Doors, Etc We demolish. Call Woody 215/983-3461

Chain Link Fence, new, slightly imperfect, heavy 9-gauge galvanized. 3'-\$1.35/ft, 4'-\$1.45/ft, 5'-\$1.55/ft, 6'-\$1.65/ft, 7'-\$1.85/ft, 8'-\$1.95/ft. Call 717/822-7820, if no answer leave message.

Chestnut, Heart Pine, Oak, original antique flooring. Original log home and timber frame. 717-374-7122.

Cramer's Discount Roofing, lowest prices in 3 states. See display ad section 4. (717)567-6782.

FLOORING- New kiln dried T&G, 2x8 Y.P. Can deliver. NOAH SHIRK SAWMILL 717-354-0192.

FOR SALE: 30 pcs. good 6"x8"x14 floor joists, 15 pcs. 6"x8"x13. (3) 7/16 8"x8" I-beams, 33' long; (42) 5"Wx10'L concrete slats. Fairbanks platform scales, 1800# capacity. 1"x8" T&G barn siding, weathered, 4'-8' long. John S. King, RD2, Box 64-1, Honey Brook, PA 19344.

FOR SALE: Poplar boards of tobacco shed, tobacco rails and some odds and ends of wood (717)355-2065

For Sale: 2x8 YP, TNG barn flooring, kiln dried, will deliver to Lancaster area, Enos King, Box 128, Rebersburg, PA 16872 answering service (814)231-6303

FREE LUMBER: 2x12x25 rough cut floor joists, 2x6, 2x4, sheathing boards, etc Plaster and lathe is removed. Frame of large two story house. Needs disassembled. 717/799-0592 after 6pm.

GEBHART'S POLE BUILDINGS: & Let quality and value stand for you. Custom design and built, commercial, residential or agricultural Put your building up today. 717-259-9438.

Metal Gates, high-tensile 1 1/2" steel tubing, 16' & 12' lengths, will not bend. 717/334-4619.

PAYING TOP DOLLAR FOR ORIGINAL WIDE ATTIC FLOORS. WE REMOVE. 717/229-2806.

POLE BUILDINGS Garages-Horse Barns-Storage-Commercial. 24X40X10 completely erected, \$6,245 Other sizes and options available. PRONTO BUILDING SYSTEMS 1-800-767-9033.

PUBLIC NOTICE/ CANCELLED BUILDINGS 2 Quonset steel arch buildings, 42x78, 50x94, selling for balance owed. Brand new. Ed 800/444-5102 Serious inquiries please

Three large tobacco sheds for sale, \$500/each to be removed (717)626-1394

Used Gondola shelving, excellent condition, also heavy duty stock room shelving, and heavy duty pallet racking Priced to sell 717-423-5132

Used Jamesway 24' ring drive Volumatic unloader, good condition \$750, Used Patz 24' unloader, good condition, \$1000 717-776-3129

WANT. 38'8"x62' bank barn suitable to rebuild Will dismantle (215)484-4227.

Lancaster Farming 1 E. Main St. Ephrata, Pa. 17522 717-394-3047 or Liltz 717-626-1164 FAX 717-733-6058

PHONE HOURS: Mon., Tues., Wed. & Fri. 8 a.m. to 5 p.m. Thurs. 7 a.m. to 5 p.m.

OFFICE HOURS: Mon. thru Fri. 8 a.m. to 5 p.m.

The following categories are available for your classified advertising. In Section D. Deadline-Thursday morning at 9 of each week's publication

- 1- Farm Equipment
- 1a- Construction Equipment
- 2- Farm Eq. Wanted
- 3- Silos and Unloaders

The following categories are available in your classified advertising. In Section C. Deadline- Wednesday afternoon at 5 of each week's publication.

- 4- Building and Supplies
- 5- Grain Equipment
- 6- Dairy Equipment
- 7- Livestock Equipment
- 8- Cattle
- 9- Horses & Mules
- 10- Sheep & Goats
- 11- Swine
- 12- Artificial Breeding
- 13- Hog Eq. & Supplies
- 14- Poultry & Supplies
- 15- Feed & Seed
- 16- Fertilizer
- 17- Plants
- 18- Fruits & Vegetables
- 19- Nursery
- 20- Lawn & Garden
- 21- Services Offered
- 22- Custom Work
- 23- Help Wanted
- 24- Situations Wanted
- 25- Business Opportunities
- 26- Household
- 27- Pets
- 28- Lost
- 29- Found
- 30- Computers
- 31- Notice
- 32- Miscellaneous
- 33- Recreational Vehicles
- 34- Autos
- 35- Trucks & Trailers
- 36- Real Estate

## FARM DRAINAGE and SOIL CONSERVATION

We Specialize In Soil Conservation And Land Improvement Work



NOW AVAILABLE...

## LARGE TRACK LOADER w/BUCKET CAPACITY OVER 3 YARDS

We're Equipped With: Dozers, Pans And Excavators to Handle Any Excavating Jobs, Such As Terraces, Waterways, Diversions, Ponds, Etc.

**COCALICO EQUIPMENT CO.**  
Farm Drainage & Excavating  
323 Reinholds Rd. Denver, PA 17517  
(215) 267-3808 (717) 738-3794

## ROPE IN SOME EXTRA CASH!

Advertise With A Lancaster Farming CLASSIFIED AD...

Phone: 717-394-3047 or 717-626-1164

