

District Proclaims Stewardship Week

LANCASTER (Lancaster Co.) — The board of directors of the Lancaster County Conservation District have proclaimed April 25 - May 2 as Soil and Water Stewardship Week.

This year's theme "Hands on Healing," emphasizes that the greatest influence on the environment comes from individuals doing ordinary thoughtful tasks in their neighborhoods. Churches, local schools, and groups concerned with conservation in the county will take a look at what individuals can do to make a difference with the environment.

The Lancaster County Conservation District has provided materials to more than 30 groups in the county in preparation for the observance. Bookmarks, activity

booklets, and other educational materials list 10 ways a person can act to conserve the natural resources we have here on our earth. Conservation districts, which work throughout the year on soil and water conservation measures, are encouraging individual responsibility to care for the natural resources. Nationwide, nearly 3,000 conservation districts work together with the National Association of Conservation Districts to sponsor the annual week-long observance.

Mowrer likes to point out that there are millions of people who know how to relate to the needs of nature — the farmers who work the soil, the fishermen who follow the streams, and the hunters who value the woods.

A 14-minute video entitled "Hands of Healing" is available on loan from the Lancaster Coun-

ty Conservation District by calling the office at (717) 299-5361. Any group interested in organizing activities for next years obser-

vance and receiving free materials can request to be put on the mailing list at the district office.

PennWest Hires Field Rep

MERCER (Mercer Co.) — Darrel L. Schweitzer, Spartansburg, has recently been hired as a field representative for Penn West Farm Credit. He is serving farmer

members from the Union City office.

Schweitzer has an extensive farm background, having been in the dairy business for 20 years. He

is the owner/operator of a 40-cow registered dairy herd on a 272-acre farm in the Spartansburg area.

Grange Testifies On Milk Pricing

HARRISBURG (Dauphin Co.) — The Pennsylvania State Grange seeks a change in the Milk Marketing Act to permit the use of statistics to help stabilize prices paid to producers.

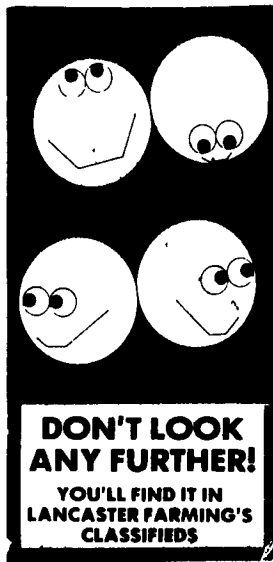
That was the message delivered Wednesday by State Grange during testimony before the Pennsylvania Milk Marketing Board. Robert Pardoe, a dairy farmer from Northumberland County and chairman of the dairy committee for the Pennsylvania State Grange, told the board the wide variation in Class I prices lead to fluctuating profits.

"Class I sales seem to vary very little throughout the year," Pardoe said. "Yet the farm price of Class I varied \$1.38 per hundred-weight in the last 12 months. Under our present pricing system, when the Minnesota-Wisconsin price declines, it pulls the Class I price down even though sales remain the same."

Pardoe said Grange policy calls for the use of statistics from the Pennsylvania Agricultural Statistics Service as a base for quarterly updating of milk prices without holding hearings as required under the current Milk Marketing Act. The Grange also seeks the establishment of a formula similar to the one developed by Dr. Stephen Ford of Penn State University.


"By using these statistics for a cost of production plus a return for labor and management, the difference between that figure and the market price could be covered by an over-order price," Pardoe told the board during the meeting held at the Farm Show Complex. "A controlling factor can be achieved with a floor of 40 cents and a cap of \$1.35 per hun-

dredweight. I believe such a formula could bring some stability to milk pricing for farmers."




DON'T LOOK ANY FURTHER!
YOU'LL FIND IT IN LANCASTER FARMING'S CLASSIFIEDS

EMHERR
HEADQUARTERS FOR ALL YOUR VENTILATION, SPRAYER & FARM EQUIP. NEEDS

	Buy Now And SAVE!	Single Speed	Variable Speed
	TAFCO GALVANIZED	Size	
	- All Sizes Listed Can Be Sent UPS	12".....	\$93.99 \$103.99
		16".....	\$129.99 \$159.99
		20".....	\$149.99 \$179.99
		24".....	\$229.99 \$249.99

BALER TWINE SUPERIOR QUALITY

	TENSILE STRENGTH	KNOT STRENGTH
	9000 - 350 Lbs.	900 - 140 Lbs.
	7200 - 425 Lbs.	7200 - 180 Lbs.

20 Bales Or More - \$18.99 Each

NORWESCO VERTICAL POLY STORAGE TANKS
EARLY ORDER PRICES!

Vertical:

- 425 Gal. Pickup \$199.00
- 550 Gal. Vert. \$259.00
- 1000 Gal. \$319.00
- 1250 Gal. \$369.00
- 1550 Gal. \$419.00
- 2100 Gal. \$589.00

FIMCO QUALITY SPRAYER EQUIPMENT

- LG-55 3 Pt. Less Pump With 3 Row 140" Boom..... \$379.99
- AGRI 110 & 150 Gal. 3 Pt. Less Pump With 8 Row Boom \$799.99
- 200 Gal. 3 Pt. With 8 Row Boom..... \$899.99
- AGRI 200 Gal. 32" d. Trailer Less w/8 Row Boom \$1,199.99

KING KUTTER, INC. ROTARY MOWERS

The King Kutter Rotary Mower is a leader in performance and quality. It is constructed with a single top sheet welded to heavy I-beams and reinforced with spider and cross bracing for long lasting, heavy-duty performance

NOW IN STOCK:

	List	SALE
• 5' 3 Pt.	\$619.90	\$549.99
• 6' 3 Pt.	\$870.84	\$759.99
• Heavy Duty 7' 3 Pt.	\$2,029.84	\$1,699.99

7 Ft. Model Shown

WORKSAVER 3 PT. REAR BALE CARRIER

1500 Lb. Cap \$189.99

★ Full Line Parts Dept. ★
★ Sell, Service & Install ★

14 Herrville Road
Willow Street, PA 17584

Ph: 717-464-3321 or
Toll Free 800-732-0053

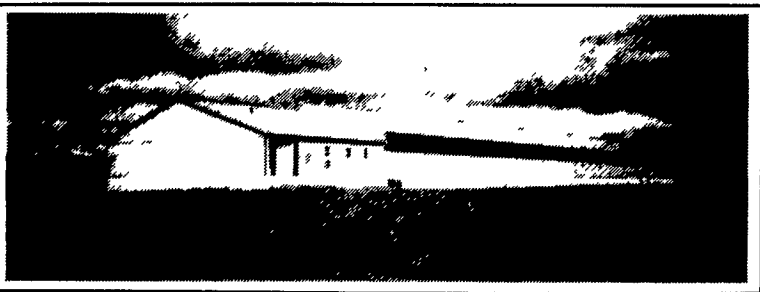
Store Hours:
Mon.-Sat. 7:30AM to 8:00 PM

ACE Hardware
UPS Shipping Point

EMHERR EQUIPMENT, INC. FARM & HOME CENTER

4-24

Needed immediately:



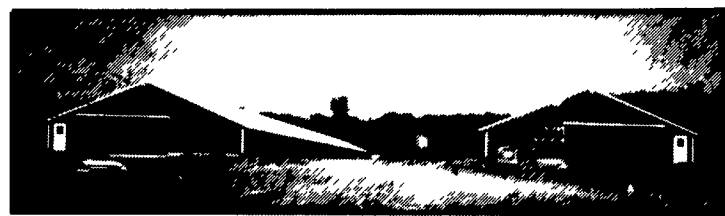
42' x 314' ASP breeder house

- Contract commercial breeder houses for American Selected Products, Milton, Pa.
- Preferable within 60 miles of Selinsgrove, Pa
- New housing
- Remodeled existing housing
- Single story, deep pit or high rise
- Automatic feeding, ventilation and egg gathering

Call: Tom Weidman
Northeast Agri Systems 1-800-673-2580

Call Northeast Agri Systems For information on new contracts being offered by other local feed and livestock companies

Contracts available for
• Tom & hen turkeys: 7,200-15,000 birds



Two 50'x620' tom turkey houses

Contracts available for
• Hog finishing: 1,000-3,000 head
• Sow units: 200-1,800 sows



101'x245' 3000 head tunnel ventilated hog finishing house

Contracts available for
• Layer houses: 90,000-126,000 birds



108,864 blrd CHORE-TIME, layer house with ULTRAFLO® feeding

Northeast agri systems **Northeast Agri Systems, Inc.**

FLYWAY BUSINESS PARK
139 A West Airport Rd. Lititz, PA 17543
(717) 569-2702 1-800-673-2580

VISA MasterCard