

1 FARM EQUIPMENT



1979 Jeep Wagoneer 70,000 Original Miles, New Paint, Air, Cruise, AM-FM Cassette, Nice
\$3,000 OBO



1989 Ford F-350 4x4 Diesel Truck, 7.3 Liter, 4000 Original Miles w/ Custom Mounted GVM 500 Gal. Spray Rig w/40' Booms and Foam Markers, Like New
Only \$28,500



1981 Int DT466 w/Turbo, 210 HP, Motor Rebuilt, w/18' Steel Rollback w/Winch, 11 MPG
\$13,500



AC Rough Terrain Forklift Diesel ROPS, 6000 Lb. Capacity, 21' Mast, nice
\$5,500



JD 310A 1981 Cab, Low Hours, New Rear Tires, Nice
\$10,500



Michigan 110 Self Loading Earth Mover, Detroit Diesel, Power Shift, 23 5-25 Tires, Ready To Work
\$7,000

LESTER ZIMMERMAN
Myerstown, PA
(717) 949-3582

DISMANTLING FOR PARTS Just arrived for parts Fiat Allis FL-10C w/ damaged engine, good final drives available, OR-OPS, fair u/c All parts available now
BALANDA EQUIPMENT
P O Box 407, RT 29, Palm, PA 18070
1-800-322-8030

DISMANTLING FOR PARTS. Just arrived for parts CAT 950A w/soft cab, GP bucket Damaged engine All parts available
BALANDA EQUIPMENT
P O. Box 407, RT 29, Palm, PA 18070
1-800-322-8030

FORKLIFT PETTIBONE 6000, Detroit power, 500 hrs. 4x4, \$8,000
410-833-9091

FORKLIFT Pettybone Super-6, lifts 32', good condition, \$12,000
215/395-6557

HIGH TENSILE FENCE SPECIAL 1 slot crimping tool for 1/2 length sleeves, includes bolt cutter, \$25 No guarantee
KENCOVE FARM FENCE 4 1 2 - 4 5 9 - 8 9 9 1
1-800-245-6902

Hough 400 paydozer, 4 like new 33 5x33 tires, recently new 1710 Cummins engine, \$12,500 OBO Call Jerry 717-463-3701

Hyster 1 ton propane forklift in good condition, also Allis Chalmers crawler with bucket and forks, has alot of power, \$4200, \$4000 cash Spring Garden Plumbing, 339 Spring Garden Road, Kinzers, PA Phone 717/442-9622 7-7 30 morn or eve

Hyster 2500 lb forklift, LP, PS, working order but has engine blowby \$2500
717-943-7655

JCB 1400-B, 1985 model, canopy, 2WD, E-Stick, runs and operates well, \$12,450 215-245-2749 Days, 215-789-1578 Evenings ask for Tom Flosser

JD320A loader 3pt PTO & ROPS \$6,600 Case580C, TLB, cab, \$11,900 JD555A loader, new engine, 90% bottom, \$14,900 Case350, 6-way dozer \$6,900. (3) Dresser 175-C loaders \$28,500, \$34,900 IH154 CubLoBoy 5' mower, 3pt, PTO, \$3,500 81-GMC diesel dump, 5+2, airbrakes, \$7,900 12 ton tag-a-long, \$2,500 (609)466-2953

JD 400 TLB, solid machine, \$7500
215/756-6723

JD 455G crawler loader, 1989 model, 1200 original hrs, excellent condition, \$30,000 302-284-9220

Backhoe, diesel, 580 CK, fair condition After 5pm, (717)458-6168.

CAT 977 H-Model front end loader, rebuilt motor, perfect for land clearing, \$8000 215/326-0230, 215/845-3514

Cab, swivel seat, robs for JD 500C, 510 Best offer 215-267-3209

Case 850-C crawler loader, motor apart, asking \$4,250 Bucks County (215)343-0156

Case Construction King Backhoe/Extend-A-Hoe, Running Order Lehigh Co (215)767-9385

Eager Beaver Roller Mod. #SRH 150 1 1/2 Ton, \$2,995

Bobcat Mod # 743 Diesel 1224 Hrs. \$11,250

Grummerschmit Air Compressor Mod #105, 105 CFM 776 Hrs., \$3,450

Gardner Denver Mod # SPEVC 85 CFM 839 Hrs., \$2,750

Layton Tag Power Mod #H \$2,225

Ford Lane Tag Paver Mod #A3, \$2,750

Eager Beaver Chipper Mod #200, Self Feed, 287 Hrs., \$8,500

2 Dump Bods 8' Fits 1 Ton Truck \$850-\$1995

Argo Mod #F 20 Ton Winch, Fits 175B IH \$2,000

Rodgers 16 Ton Tile Top Tag Trailer, Air Brakes, \$5,500
(814) 658-3066

FORKLIFTS

2,000 to 15,000 Lb.
\$1,000 to \$12,000
Gas/LP-Diesel-Electric
Cushion-Pneumatic-Rough Terrain
New Komatsu Forklifts
Available
PA INDUSTRIAL EQUIPMENT
(215) 326-7090

FOR NEW AND USED CONSTRUCTION EQUIPMENT PARTS AND ATTACHMENTS

CALL
H.E.L.P., INC.
1-800-446-0505

Specializing in Caterpillar Parts also available for Case, John Deere, IHC, Flat, Etc. National Locater Service Available

HEAVY EQUIPMENT LOADER PARTS, INC.

R.D. #2 Box 2230 Route 22
Grantville, PA 17028

Cowan Equipment
Martinsburg, PA
814-793-4293 Day or Evening

- JD 5400 chopper, small knives, 1,900 hrs., 3 row corn head & grass head, very sharp, 1 owner
- NH 1890 chopper, 4x4 w/corn & hay head
- NI 709 Uni System, 4 WD, excellent condition
- NI 709 Uni System, 2WD
- Gleaner F2, 4 cyl., turbo
- JD 4450, cab & air, power shift, 4WD
- JD 2950, 4x4
- JD 2750
- JD 2550, 4x4
- JD 4640, 4 post
- JD 4430, cab & air, quad range
- JD 2840, hi-low, 1 owner
- JD 4230, 4 post, power shift
- JD 4520 w/cab, very sharp
- JD 4320, cab & air
- JD 4020 power shift, dual hyd.
- JD 4020, side console
- JD 3020, power shift
- JD 3020, side console, hi clearance
- Ford 9700, cab & air
- Ford 5600
- Deutz DX140, cab & air, 4WD
- MF 1105, cab & air
- Oliver 1955
- IH 1566, cab & air
- IH 1066, cab & air.....\$9,000
- IH 856 w/cab
- IH 560 gas
- IH 574 utility
- White 2-105, cab & air
- White 2-70, red stripe
- White 2-110, 4x4
- White 2-155, 4WD
- AC 200 w/cab
- Cat 930 4x4 loader
- NI 325 corn picker, 12 roll bed
- NI 325 corn picker, 8 roll bed
- NI 324 wide row picker
- Miller 12' offset disc
- Brillion 6 Row Cultivator
- Brillion 8 Row Cultivator
- JD 7000 corn planter, 6 row, no-till
- Axle mount duals for IH 38"
- Roll guard for 2950..... \$650
- Turbo charger for a 4030
- Turbo charger for a 4230

1a CONSTRUCTION EQUIPMENT

JD model 420 crawler loader, 1956, rebuilt engine, and rebuilt U/C, machine has been sitting for over 10 years Motor is good, \$2,000 Evenings, (215)579-7084

Jevco plaster machine, good condition, asking, \$2,400 (717)575-1696

Loader JD755, 90% UC, Nice, \$20,000 410-526-5635

WANT TO BUY all makes and models of construction equipment
(301)694 6148
(301)371-9299 fax

Welding machine, Hobart 600, A M P, HD, V8, \$1950 Call 215-766-7694 Evenings

JCB 1400-B, 1985 model, canopy, 2WD, E-Stick, runs and operates well, \$12,450 215-245-2749 Days, 215-789-1578 Evenings ask for Tom Flosser

JD320A loader 3pt PTO & ROPS \$6,600 Case580C, TLB, cab, \$11,900 JD555A loader, new engine, 90% bottom, \$14,900 Case350, 6-way dozer \$6,900. (3) Dresser 175-C loaders \$28,500, \$34,900 IH154 CubLoBoy 5' mower, 3pt, PTO, \$3,500 81-GMC diesel dump, 5+2, airbrakes, \$7,900 12 ton tag-a-long, \$2,500 (609)466-2953

JD 400 TLB, solid machine, \$7500
215/756-6723

JD 455G crawler loader, 1989 model, 1200 original hrs, excellent condition, \$30,000 302-284-9220



Fiat Allis 745H Wheel Loader
4 Yd. Bucket, 200 H.P., Very Good Cond.
\$15,000.00



Caterpillar 922 Wheel Loader
NEW 80 h.p. Gas Engine, 1 1/2 Yd. Bucket.
Machine in Good Cond.
\$7,500.00

Heavy Equipment Loader Parts, Inc.
CONSTRUCTION EQUIPMENT & PARTS SALES
Rt. 22, RD 2, Box 2230, Grantville, PA 17028
717-469-0039 1-800-446-0505
FAX (717) 469-7879



Joy 125 Compressor With John Deere Engine
\$2,650



JD 450C Crawler Loader
\$11,500



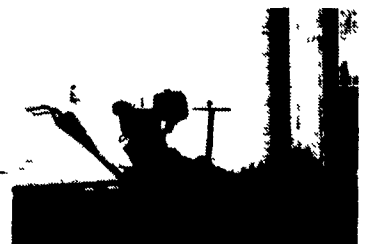
JD 544 Loader \$12,500



Clark Forklift, 3 Stage Tow Motor
\$3,500



JD 450B Loader w/Backhoe and 4x1 Bucket
All Condition
\$15,000
Tagalong Trailer \$1,200



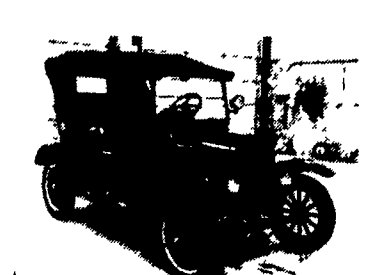
Ditch Witch Ditcher, 3 Ft. Blade, With Trailer
\$1,395



1987 JD 450E 6-Way Blade
~~\$24,500~~ \$22,500



1985 J.D. 455 D Crawler Loader, New Pins, Bushings & Sprockets
\$18,500



1924 Model T in Excellent Condition
\$8,500

AA Equipment

1797 Robert Fulton Hwy.
Quarryville, PA 17566
717/529-2512