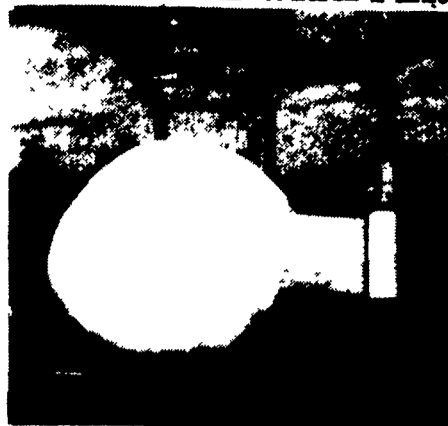
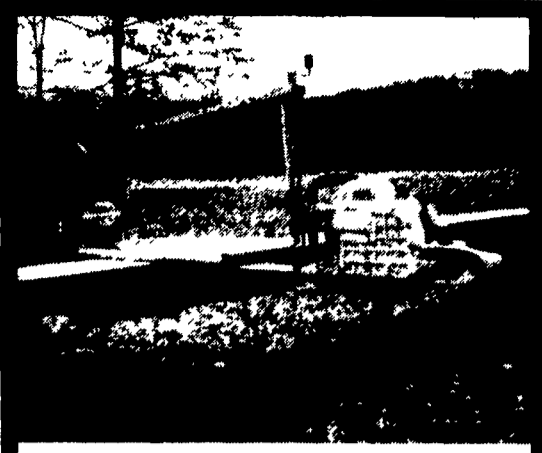


### ROUND BALE WRAPPERS



A very simple well built 3 pt. hydraulic machine that will pick up heavy round bales, wrap them and set them where you want all for a price you can afford. A one man operation! Made in PA.

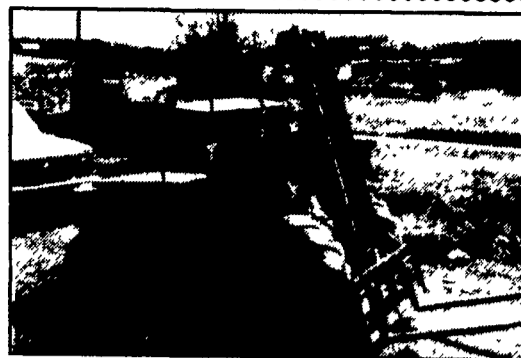
**FARMLUND INCORPORATED**  
Christiana, Pa. 717-656-9919  
Dealers Wanted 410-658-6319



Portable Sawmill, Excellent Condition, 36" Cuts Logs Any Thickness.

Asking \$1200.00

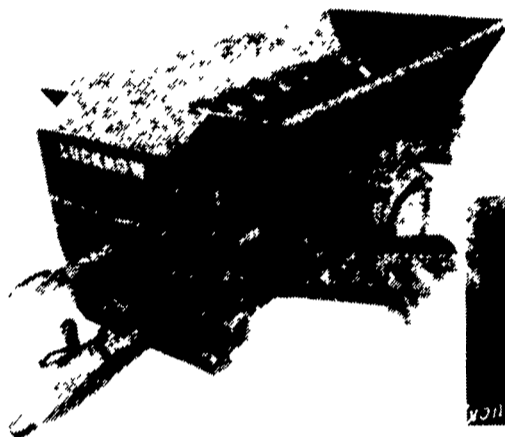
Call 215-536-2200 & Ask For Coleen



**Ford 172 Gas Engine**  
Good Running Condition, Needs Painted  
**\$3,500**

**Brewer Equipment**  
Orangeville, PA 17859 717-683-5411

## LUCK//NOW MIXER WAGON



**4 AUGER DESIGN  
EVEN MIXING  
EVERY TIME!**

Hydraulic Lift on Discharge Chute - The hydraulic lift allows the operator to lift the discharge chute from the tractor seat for various height feeding bunks - Optional on all models.

**LEOLA, PA**  
**M.M. WEAVER & SON**  
(717) 656-2321

**FREDERICK, MD**  
**DOODY'S MECHANICAL SERVICE**  
(301) 662-4580

**N.J., DEL. MD EASTERN SHORE**  
**JONES DAIRY SERVICE**  
(609) 267-0198

**MARTINSBURG, PA**  
**WINELAND EQUIPMENT, INC.**  
(814) 793-2109

DEALER INQUIRIES CALL: U.S. Sales Rep Scott Douglas 518-529-7326

### GRUMELLI'S FARM SERVICE INC.

929 ROBERT FULTON HWY.  
QUARRYVILLE, PA. 17566

717-786-7318

1.5 Mile South Of Quarryville On 222

See Salesmen: Tony Grumelli, Clarence Herr, Don Fichtner



bobcat



**Model 9650 147 PTO HP**  
(109.7 kW)

**NEW AGCO ALLIS  
9600 POWER SHIFT  
TRACTOR**  
133 PTO HP to  
190 HP

40 & 50 H.P. TRACTORS  
IN STOCK  
AT REDUCED PRICES

#### USED TRACTORS

IH 806, AC 160  
AC 180 (Good Cond.)  
AC-200 Tractors  
AC XT190 Series III  
AC 7040  
AC 7050 Tractor  
AC 180 (Good Cond.)  
AC 190XT (Good Cond.)  
JD 50  
Oliver 66, Good Cond.  
20' Used International Disc, Good Cond.  
Far Cub w/Plow & Cult., Good Cond  
AC C w/Mower  
Case 411B  
Deutz Allis 5215, All Wheel Dr., 125 Hrs.,  
Ex. Cond.

**WINCO**  
Generator w/Diesel  
Engine

New & Used  
Woods Mowers

#### USED EQUIPMENT

Used NH, Gehl, Bobcat Skid Loader  
444 AC Baler

#### GLEANER COMBINES

M Combine  
G Combine w/Corn & Grain Head  
F w/Corn & Grain Head  
Brillion 8 Ft. Seeders (Only 2 Left)

**NEW & USED  
BOBCAT'S IN STOCK  
FINANCING & LEASING  
AVAILABLE  
SHIP PARTS DAILY UPS**

Sales, Service & Parts For  
AGCO Allis, Kubota, Long,  
Belarus New Idea, Hesston,  
Bush Hog And Bandit Chippers

## MARSHALL MACHINERY, INC.

Rt 652, Midway Between Indian Orchard and Beach Lake.  
Honesdale, PA 18431 (717) 729-7117

WE SHIP PARTS  
DAILY BY UPS.  
Hours: 8-5 Mon.-Sat.

### PARTIAL LISTING

#### TILLAGE EQUIPMENT

Tandem Discs: IHC: 350 Smoothing 14 Ft.; 37 Smoothing 14 Ft.  
WHITE: 13 Ft. BUSH HOG: 12 Ft.; 14 Ft. Plowing; 13 Ft.  
Smoothing. MASSEY FERGUSON: 10 Ft. Leveling; 12 Ft.  
Smoothing. KEWANEE: 800 Super Flex 14 Ft.; 13 Ft. Rock  
Flex. JD: RWA 13 Ft. Smoothing; BWA 12 Ft. Smoothing.  
OFFSET PLOWING DISCS:  
BUSH HOG: 12 Ft. Reconditioned; 9 1/2 Ft. Heavy Duty. MILL-  
ER: 11 Ft. 3 Bar; 14 Ft. KEWANEE: 12 Ft. Demo. ATHENS:  
11 Ft. Tandem.  
PLOWS:  
JD 3 PTH Chisel Plows; JD 2600 Auto Reset; IHC: On-Land Hitch  
710 6X; 720 8X; 735 Variable 5X. 7-14 Shank 3 Pt. Chisel  
Plows. WHITE: 348 3X 3 pth Reset Plow, 548 5X Spring Reset  
Semi Mt.  
BRILLION: 16 Ft. And 18 Ft. (Danish Tine) Spring Tooth  
Harrows.

#### INDUSTRIAL

TRACTOR/LOADER/BACKHOES: Case 480, 580. AC 715C.  
York Grader (Towable). Kubota L4150 w/Cab 200 Hrs. ARPS  
728 3 pth Backhoe.  
DOZERS: JD 450C w/6 Way Blade; AC 653 w/6 Way Blade; AC  
H3; Case 450 Crawler w/4&1 Bucket.  
LOADERS: AC 640; AC 615; Massey 2135; JD 440B Log Skid-  
der; Pettibone B66 4WD Forklift; Ford Lane Paver Model A-2;  
AC 600 Forklift; AC 345 Payloader w/Log Fork And Bucket.  
SKID STEERS: NH L775; NH L553; JD 375.

Purchased From Farmer Who  
Lost His Lease, Like New,  
NH Machinery  
489 Haybine, 256 Side Rake,  
162 4 Star Hay Tedder  
Bale King Bale Rack &  
Running Gear

TINKERER'S ROW: AC D15; AC B; AC 175; Ferguson 20; Far-  
mall H; Lond 610 4WD w/Front End Ldr.; JD 3020 WFB; Hay-  
buster No-Till Drill; AC D15 3 Pt. Cultivator & Side Dresser.

#### RECENT TRADES - ECONOMY SPECIALS

JD 7000 Corn Planter w/Monitor, Narrow Row,  
Dry Or Liquid Fertilizer ..... \$3,275  
NH 352 Mixer Mill ..... \$1,295  
NH 28 Blower ..... \$775  
Agri Metal Bedding Chopper ..... \$695  
Haybuster No Till Seeder ..... \$2,675  
Hesston 1091 Haybine ..... \$1,095  
NH 258 Side Rake w/Dolly Wheels ..... \$1,895

#### PLANTING EQUIPMENT

JD 8250 Disc Grain Drill, Like New; AC 2-4-6- Row Corn Planters;  
JD 2 Row 3 PTH Corn Planters; Int. 258 Trailer Corn Planter;  
Lilliston No-Till Seeder; Brillion 21 Ft. Ex-Fold Cultipacker-  
Like New; Brillion 10 Ft. Cultimulcher; JD 2 Row Tool Bar  
Corn Planter 3 Pt.; Cole Powell Multiplex Planters.

#### HAY AND FORAGE

RAKES: NH 254 Tedder Rake; NH 56, 256 & 258 Side Rakes; JD  
660 w/Dolly Wheels. NI Rakes; Fahr Four Star Centepede Tedders;  
New Deutz Fahr KS2.60 Dual Rotary Rake w/Hyd. Fold For Easy  
Transport- 19 1/2 Ft. Working Width.  
NI 406 9 1/2 Ft. w/Dolly Wheels.  
HAYBINES: NEW IDEA: 270, 272 Cut/Ditioners.  
NH: 469, 472, 489. HESSTON: 1070, 1071, 1090, 1014 Hyd.  
Swing.  
BALERS: NI: 483, 484 Round Baler, Demo; NH: 273 w/Kicker,  
320.  
FORAGE HARVESTORS: HESSTON: 2000-100, 2000-150,  
7020 w/Your Choice Of Heads, 7140.  
LARGE SELECTION OF PICK UP AND CORN HEADS -  
CALL FOR YOUR NEEDS.  
GRINDERS/MIXERS: Bearcat 1250A; Gehl 65MX; Artsway  
425A; Gehl 100 Hyd. Drive w/Scale.  
FLAIL CHOPPERS: NH 38. FORAGE BLOWERS: NI: 620,  
622. GEHL Blower w/Re-Cutter.  
10'x24' Tandem Axle Hyd. Dumping Round Bale Hauling Trailer.  
WHITE TOP HARVESTOR SILO, 20x32 w/Unloader, Tom Down  
Ready To Load, Delivery Available.

#### SPECIAL

NEW FORD NEW HOLLAND 306 Side  
Slinger Manure Spreader,  
Tandem Axle  
**\$8,975**

#### TRACTORS

AC: 7010 w/Cab, PS; 6080 w/Cab; 6080 w/ROPS & Sunroof; 6060;  
5040 w/Ldr.; 200 /Cab; 190XT Diesel; 185 Diesel; 180 Diesel;  
170G; D12; D10 w/Woods L159 Mower.  
DEUTZ: 7085 w/Cab 2WD; 6240 Like New; DX90 4WD.  
CASE: 385 Utility Tractor w/Hyd. Drive Sickle Bar Mower.  
FORD: 6700; 5000 w/Ldr.; 4000 w/Ldr.; 3000 w/Ldr. IHC: 140 w/  
Cultivator; Super H. JD: 4240; 3020 w/Side Console. MAS-  
SEY: 135 w/Ldr. KUBOTA: M8950DT 4WD w/Cab.  
HI CLEARANCE: Ford 2000; Farmall Super A.

#### MISCELLANEOUS EQUIPMENT

SPRAYERS: Myers 100 Gal. 3 Pth. JD 535 Trailer Sprayer.  
Assorted Trailer And 3 Pth. Sprayers.  
FEEDER WAGONS: Knoedler Feeder Wagon; Knoedler Dial-A-  
Mix Wagon; E-Z Flow 220 w/Grain Wagon; Kilbros 250 Grain  
Wagon.  
TMR MIXER WAGON: Schwartz.  
Pronovost Tandem Dump Trailer; 48 Ft. Move All Tandem Axle  
Hyd. Equipment Trailer; York Heavy Duty Pull Type Road  
Rake; Case/IH 8610 Bale Processor; Hesston #10 Stack Hand  
And #10 Stack Processor; Westfield 8x51 Ft. Grain Auger,  
Shaver 3 Pth. Post Pounder; JD 30 2 Row Potato Digger; JD 2  
Row Potato Planter; MC 3 Pth. Lawn Genie Pick Up Mower;  
Jobber Rock Windrower; Vermeer Trencher; A&W 250 Hp.  
Dynamometer. Used Cab For 190 Or 200. LARGE SUPPLY OF  
FRONT END LOADERS AND CABS FOR VARIOUS  
MAKES OF TRACTORS.

#### MANURE EQUIPMENT

LIQUID: 3000 Gal. VanDale Vacuum Pressure Liquid Spreader  
For Truck Mounting; Hawkbilt 3220 Gal.; Hedlund Martin 2900  
Gal. And 2400 Gal.; Betterbilt 1500 Gal.; Clay Honey Wagon-  
Vacuum; Leftover Wic 2100 Gal. Tandem Axle Liquid  
Spreader- Discount Price; Calumet Liquid Tank  
NI 3632 Tandem Spreader- Sharp; Knight 716 Side Spreader.  
Several NI And NH Box Spreader, Various Sizes. BARREL  
SPREADERS: NH 668.