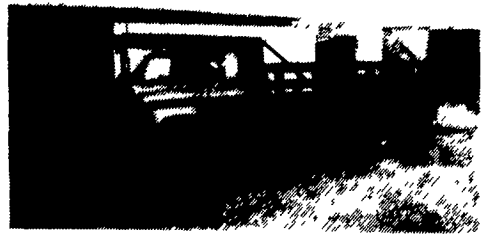


**35 TRUCKS & TRAILERS**

18' Deck-Over Equipment Trailer, Dual Axle with Beaver Tail Ramps \$2400-OBO, Good Condition 410-848-0171

1967 GMC truck, 21,000 GVW, 13' flat bed dump, 4-spd., fair condition, \$1500 717/993-2659

1969 Chevy C-50 Dump Truck 9ft Dump Body, Excellent Condition, New Inspection, Garage Kept \$3600. 1982 Zimmerman Construction Trailer, Tandem Axle, 22ft 12,000GVW, New Inspection \$1600 (717)757-4799 York Co



**76 Chevy Tandem**  
427 Gas  
Excellent Condition  
**(717) 545-3948**

**CHEVROLET TRUCKS**

You Need It! We Probably Have It!



**CHEVY CAB & CHASSIS**  
366, 5 Speed, 27,500# GVW, Long Chassis, Will Custom Fit To Your Needs  
**\$9,000**



**'92 FORD F-700**  
Diesel, 5&2 Trans., 25,000# GVW, 7000 Miles, Like New  
**\$23,000**



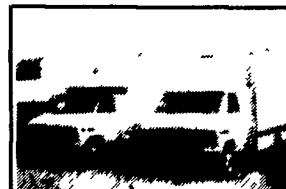
**NEW CHEVY KODIAK**  
Cat, 6 Speed, 19 Ft Rollback, Fully Deluxe



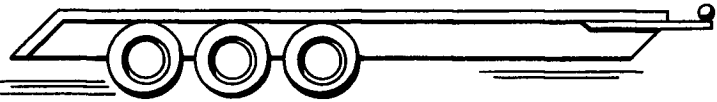
**'83 INT'L DUMP**  
V8, 5 & 2 Trans., 33,000# GVW, Air Brakes, Private Owner  
**\$7,500**



**INTERNATIONAL DUMP**  
V8, 5 & 2 Trans., 10 Ft., Dump Boyd, 33,000# GVW, Air Brakes, Only 50,000 Miles, Reconditioned



**NEW CHEVY HI CUBES**  
350, 14 Ft. Van Bodies, Air Cond., Flat Floors



**TRAILER PARTS**

- \* AXLES \* BRAKES \* SPRINGS
- \* HITCHES \* BRAKE CONTROLLERS
- \* WIRING \* COUPLERS
- \* RV ACCESSORIES

DISCOUNT PRICES

**800-831-8680**

**BLAIR WELDING & MFG. INC.**

2210 URBANA PIKE  
JAMSVILLE, MD 21754

VISA/MC ACCEPTED. - 20 YEARS SAME LOCATION

**LEFEVER BROS.**  
DILLSBURG

CALL (717) 432-9611

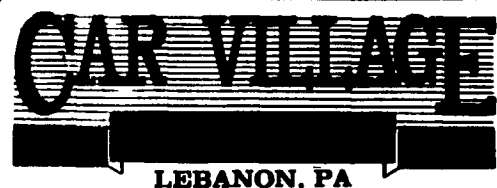


Quality Dealer Since 1921

406 U.S. Route 15 • Dillsburg, PA 17019

Nicest Selection  
Of Pre Owned  
Trucks  
Anywhere!

RTE. 422,  
WEST  
LEBANON, PA  
(Across From Lebanon  
Valley Mall)



717-274-2000  
FAX  
717-274-2717

Business Hours  
Mon-Fri. 9-9  
Sat. 9-4

**THIS IS JUST A SMALL PORTION OF OUR HUGE INVENTORY**



**Super Duty Chassis 92 Ford F-450 XLT** Like New, Only 14,000 Miles, 7.3 Diesel, 5 Spd., AC, 15,000 GVW, 161 W.B.



**Diesel Super Cab 4x4 91 Ford F-250 XLT Lariat**, Only 8,500 Miles, 7.3 Diesel, AT, AC, Loaded, A Beauty



**Diesel Engine For Sale** 6.2 Diesel, Auto, Runs Great, 82 GMC 1/2 Ton \$1,400



**Flatbed 82 Ford F-350** 351, 4 Spd., 9 Ft. Bed, Runs Good



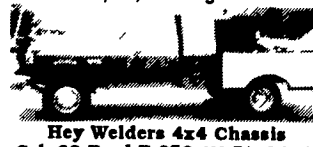
**Stake Body, 89 Ford F-350** Short 137 W.B. 7.3 Diesel, 5 Spd. O/D, 9 Ft. Bed



**1 Ton 4x4 Super Cab 88 GMC** 36,000 Original Miles, 350 I.I. AT, AC, Very Nice, Very Clean



**Diesel Chevy Van** Look At This One, 6.2 AT, Frt & Rear AC, 2 Tone Dark Blue & Charcoal, 60,000 Original Miles



**Hey Welders 4x4 Chassis Cab 89 Ford F-350** 460 F.I., 5 Spd., Short 137 Wheelbase, Dual Tanks, Lincoln Welder



**4 Wheel Drive 88 GMC Dually** Low Miles, Works Great, 454 F.I., AT, AC, Ball Hitch In Bed



**Crew Cab Dually 88 Ford F-350** Centurion Conversion 460 C.F.I., AT, Tow Pkg, Real Sharp



**Good Lookin 88 GMC Crew Cab Dually Kodiak Conv.** 18,000 Actual Miles, 454 I.I. AT, AC, TV, VCR, Fold Down Sofa Bed, Tow Pkg.



**Rollback 84 Chevy C-30** Aluminum Jerr Dan, 2 Car Capability, Light Bar



**Diesel 5 Spd., 91 Ford F-350 XLT Lariat** 7.3, 5 Spd., A/C, Low Miles, Clean As A Pin



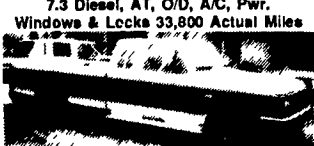
**Ford F-350 Chassis Cabs** 1989 350 5 Sp., 137 W.B. 1987 - 460 AT, 161 W.B.



**Cummins Chassis Cab 91 Dodge D-350** Cummins Diesel Power, Auto Air Conditioning, 161 Wheelbase, 11,000 GVW



**Diesel Crew Cab Dually 89 Ford F-350 XLT Lariat** 7.3 Diesel, AT, O/D, A/C, Pwr. Windows & Locks 33,800 Actual Miles



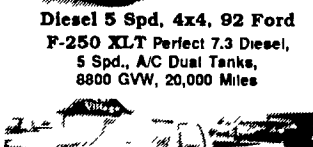
**Turbo Charged Diesel 89 Ford F-250 Super Cab XLT** 7.3 Auto, A/C Dual Tanks, 8800 GVW, Running Boards, 8th Wheel Plate, Captain Chairs, 4:10 Rear Axle



**88 Chevy 3500 Dually** Pulling Power, 454 AT, AC, 2 Tone Paint, 52,000 Actual Miles \$12,900



**Diesel 5 Spd, 4x4, 92 Ford F-250 XLT** Perfect 7.3 Diesel, 5 Spd., A/C Dual Tanks, 8800 GVW, 20,000 Miles



**Dodge Dually 91 Dodge LE** Cummins Turbo Diesel, 8000 Original Miles, Auto, A/C, A Beauty



**90 Ford F-250 4x4 XLT Lariat**, 351 E.F.I., AT, AC, 8800 GVW, 46,700 Actual Miles



**Diesel Dually, 91 Ford F-350** 7.3 AT, Overdrive, Dual Tanks, Tow Pkg, Post 4:10 Rear, 17,000 Actual Miles



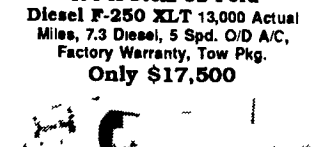
**Cummins Turbo Diesel 89 Dodge D-350 Dually** Strong Tow Machine, AT, AC, 53,000 Miles



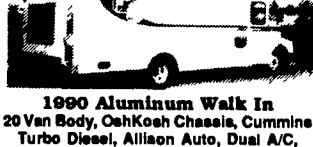
**GMC Isuzu 90 GMC Dump Truck** Cab Over, Sharp Turning Radius, 4 Cyl. Turbo Diesel, Auto, Hydraulic PTO, 13,200 GVW, 10 Ft. Dump



**It's A Steal 92 Ford Diesel F-250 XLT** 13,000 Actual Miles, 7.3 Diesel, 5 Spd. O/D A/C, Factory Warranty, Tow Pkg. Only \$17,500



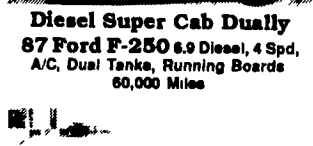
**1990 Aluminum Walk In** 20 Van Body, OshKosh Chassis, Cummins Turbo Diesel, Allison Auto, Dual A/C, Honda Generator, Rear Lift Gate, 34,000 Miles



**Diesel Super Cab Dually 87 Ford F-250** 6.9 Diesel, 4 Spd, A/C, Dual Tanks, Running Boards 60,000 Miles



**Cummins Turbo Diesel 89 Dodge D-350 Dually** Strong Tow Machine, AT, AC, 53,000 Miles



**Cummins Turbo Diesel 89 Dodge D-350 Dually** Strong Tow Machine, AT, AC, 53,000 Miles