



1972 IHC 2010 Steel Hauler
56000 GVW, 8 Cy. Gas With 5 Speed
& 2 Speed Rear w/Lift Axle
\$2,500.00
Call 215-485-3584

1989 INTERNATIONAL S1954
DT466 (210 hp) 5+2, AB, PS, 33,000
GVW, w/18' Scott Silage and Grain
Body (Tapered Sides)

1984 INTERNATIONAL S2275
Cab & Chassis, 300 Cummins, 7 spd.,
Air Brakes, PS, 12 Front, 42 Rear,
Double Framed, 154" C.A.

1978 KENWORTH,
C500, 3406 Cat, PS, 13 Speed,
18 Front, 44 Rear, 146" C-A
Other Units Available

**Scott Silage & Grain
Bodies In Stock**

SUNNY ACRE SALES
RD #2 Tyrone, PA 16686
(814) 742-7303

New plate steel, good for
trailer floors and dump bod-
ies 3/16", \$13/per run-
ning foot, 1/4" \$17/per run-
ning foot, 8' wide up to 35'
length Heavier thickness
available We can deliver
KISCO SALVAGE, RT
209, Tremont, Tremont
17981 717-695 3332

Repossessed 1990 Ford
F350 Crew cab, dual
wheels, low miles, 10,000
GVW, dual tanks Fulton
Bank 717-291-2762
(Walt)

Mack, U model, 1982, 300
engine, 25' aluminum
dump trailer, \$15,000 Ken-
worth, 1973, 350 Cum-
mins, 25' aluminum dump
trailer, new engine,
\$15,000 Call
(215)794 7309

NEW DIESELS!



1993 F-Super Duty 161" WB,
Chassis Cab, 7.3L Diesel, 5 Spd,
OD H-Duty, 5.13 Rear, XL Trim
Red, Red Vinyl. Stock #8507



1993 F-250 SC 4x4 7.3L Diesel,
Electronic 4 Spd., Auto. Trans., 4.10
Rear, XLT Trailer Towing, HD Rear
Suspension Stock #2404



1993 F-250 4x4 7.3L Diesel, 5 Spd.,
Manual w/OD, HD, XLT, Cabernet
Red/White, Red Interior Stock
#4926



**1993 F-250 4x2, 7.3L Diesel, Elec-
tronic 4 Spd. Auto Trans, 4.10 Rear
Trailer Towing, XLT, Deep Shadow
Blue, Blue Cloth Interior. Stock
#6112**



**1993 F-250 Super Cab 4x4, 7.3L
Diesel, Electronic 4 Speed Auto
Trans, 4.10 Rear, XLT Trailer Tow-
ing, HD Rear Suspension, And Cap-
tains Chairs. Stock #7817**



**1993 F-350 4x4, 7.3L Diesel, Elec-
tronic 4 Spd. Auto Trans, 4.10 Rear,
XLT, Trailer Towing, Cabernet Red
w/Cloth Grey Interior. Stock #4016**

OUR LOWEST

"NO HASSLE PRICE"

IS MARKED ON EVERY VEHICLE... EVERY DAY... PERIOD

TRY US!



RD 7, Box 405
Lebanon, PA
17042

717-949-2000

KELLER BROS.

Replacement Truck Bodies

Standard Features
Include:

Headboard (Square or Tapered), Stake Pockets, Rubrail, Diamond Plate
or 2" Wood Floor, Heavy Duty Construction

Length	Width	Frame Width	Price
7 Ft	66 or 78"	34, 38 or 40"	\$595
8 1/2 Ft	80 or 90"	34 or 38"	\$595
10 Ft	90"	34 or 38"	\$725
11 Ft	90"	34 or 38"	\$950
12 Ft	90"	34 or 38"	\$995
14 Ft	90"	34 or 38"	\$1100
16 Ft	90"	34 or 38"	\$1300
18 Ft	90"	34 or 38"	\$1500
20 Ft	90"	34 or 38"	\$1800

Steel Grain Bodies



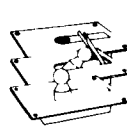
Standard Features Include:

"40" high sides - Removable" Steel or Wood Floor "6"
main rail "Primed and 2 coats automotive finish (red
or black) "Removable rear doors or gate

Size	Price
12'	\$2275
14'	\$2425
16'	\$2550
18'	\$2825

Hoists and installation available

Plastic
Wood
Slats For
Body Racks



Goose
Neck
Ball
Hitches



Trailer Hitches



Truck
Tool
Boxes

Drop Hinge
Scissor
Hoists



Write For
A Free
Catalog

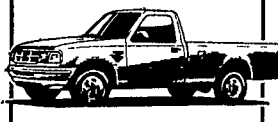
Ringo Hill Farms Equipment Co.

1624 Route 212 Quakertown, PA 18951
215-346-7340 Fax 215-346-8041

150
TRUCKS IN STOCK

Overstocked With Trucks!

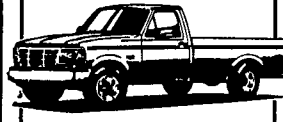
The Area's Best Selection Of Light & Heavy Duty Trucks On Sale Now!



**NEW '93 FORD
RANGER XLT 4x2**

5-spd O/D trans, sliding
rear window, chrome rear
bumper, stereo cassette,
interval wipers, cast alum
wheels, 2-tone. #F7314

**SAVE \$1891
OVER**
NOW PRICED AT \$9709



**NEW '93 FORD
F-150 XL 4x2**

6 cyl eng, 5-spd O/D trans,
headliner, 5450 GVW, aux
fuel tank, interval wipers,
argent step bumper, stereo
cassette, more! #F7318

**SAVE \$1220
OVER**
NOW PRICED AT \$11,557



**NEW '93 FORD
F-150 XL 4x4**

6 cyl eng, 5-spd O/D trans,
headliner, 6250 GVW, aux
fuel tank, interval wipers,
argent step bumper, stereo,
much more! #F7279

**SAVE \$1210
OVER**
NOW PRICED AT \$14,287



**NEW '93 FORD
F700 DUMPTRUCK**

210HP diesel, 5-spd trans,
26000 GVW, aux fuel tank,
power steering & brakes,
AM/FM stereo, mud &
snow tires, #F7308

**SAVE \$4437
OVER**
NOW PRICED AT \$33,487



**NEW '93 FORD
F-150 XLT PICKUP**

Auto O/D, air cond, power
windows & locks, cassette,
chrome bumper, aux fuel
tank, sliding window,
chrome wheels. #F7464

**SAVE \$3295
OVER**
NOW PRICED AT \$15,673



**NEW '93 ISUZU
NPR CAB & CHASSIS**

135HP turbo diesel, 5-spd
trans, 33 gallon fuel tank,
exhaust brake, 14,250
GVW, stereo cassette, tilt
wheel, interval wipers,
more! #3119

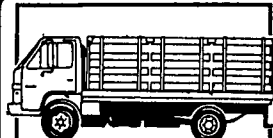
\$18,240



**NEW '93 FORD
F-150 XLT 4x4**

V8, auto O/D trans, air
cond, power windows &
locks, cassette, aux fuel
tank, alum wheels, chrome
bumper. #F7358

**SAVE \$2440
OVER**
NOW PRICED AT \$18,450



**NEW '93 ISUZU
NPR STAKE BODY**

135HP turbo diesel, 5-spd
trans, 12 foot stake body,
11,000 GVW, exhaust brake,
tilt wheel, 33 gallon fuel
tank, more! #3118

**SAVE \$5040
OVER**
NOW PRICED AT \$18,992



**NEW '93 FORD
SUPERDUTY CAB & CHASSIS**

V8 diesel supercooling
eng, 5-spd O/D trans, 161"
wheel base, 15,000 GVW,
headliner insulation pkg,
cassette, more! #F7316

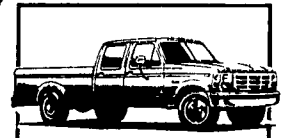
**SAVE \$3325
OVER**
NOW PRICED AT \$19,986



**NEW '92 FORD
CF7000 CAB & CHASSIS**

185HP diesel, 6 speed,
2600 GVW, air brakes,
power steering, radial
tires, aux fuel tank.
#F6221

**SAVE \$4834
OVER**
NOW PRICED AT \$26,479



**NEW '93 FORD
F-350 CREW CAB 4x4**

V8 eng, auto trans, 9200
GVW, camper pkg,
recreation mirrors, aux fuel
tank, sport wheel covers,
argent bumper. #F7463

**SAVE \$2390
OVER**
NOW PRICED AT \$21,841



**NEW '93 FORD
F-250 SUPERCAB 4x4**

XLT trim, V8, auto O/D
trans, air cond, power wind
& locks, cassette, trailer
towing pkg, aux fuel tank,
sliding window. #F7493

**SAVE \$2950
OVER**
NOW PRICED AT \$22,997

PRICES INCLUDE REBATES IF APPLICABLE. TAX & TAGS ADDITIONAL.

New Holland FORD ISUZU

717-354-4901 • 800-642-8605



Route 23, New Holland, PA

Just 15 Minutes East Of
Lancaster On Route 23

