



Philadelphia Vegetables

Philadelphia, Pa.

Wednesday, April 21, 1993

---ARTICHOKES: ctns CA 48s fr cond 5.00-6.00 ---ASPARAGUS: OFFERINGS LIGHT pyrctrs lsc CA Green exlge 46.00 lge 48.00 std 48.00 ---BEANS: MARKET SLIGHTLY HIGHER buctns/crts FL Round Green Type 12.00-16.00 mostly 14.00 ord cond 3.00-6.00 ---BEETS: MARKET ABOUT STEADY ctns bchd MX 12s 8.00 TX 12s 8.00 25 lb sks lse FL 8.00 50 lb sks lse TX 10.00 ---BROCCOLI: MARKET ABOUT STEADY ctns AZ bchd 14s 9.00 CA bchd 14s 7.00-8.00 some 6.00 few 9.00 bchd 18s 8.00-9.00 mostly 9.00 Crown Cut 10.00-11.00 ---BRUSSELS SPROUTS: 25

lb ctns CA 17.00-18.00 MX 18.00 ---CABBAGE: MARKET SLIGHTLY HIGHER 1 3/4 bucrts & 50 lb ctns FL Round Green Type med 11.00-12.00 mostly 11.00 Red Type sml 17.00-18.00 TX Round Green Type med 10.00-11.00 few 9.00 50 lb sks CD Round Green Type lge 7.50-8.00 NL Red Type lge 14.00-16.00 NY Round Green Type lge 7.50-8.00 mostly 8.00 45 lb ctns CA Red Type med few 22.00 1 3/4 bucrts FL Savoy Type med 12.00 TX Savoy Type med 12.00 ---CARROTS: MARKET ABOUT STEADY sks 48 1-lb flmbgs CA Topped med-lge 11.00-12.00 FL Topped med-lge 9.00-11.00 50 lb sks lse CA Topped jbo 15.00 FL Topped jbo 10.00-12.00 TX Topped jbo 9.00-10.00 ---CAULIFLOWER: MARKET HIGHER ctns flmwrpd CA 12s 10.00-12.00 mostly

11.00-12.00 occ 13.00 fr cond 8.00 9s 12.00 ---CELERY: MARKET LOWER ctns CA 1 1/2 dz 12.00 2 dz 12.00-13.00 2 1/2 dz 12.00-13.00 fr cond loas 10.00 3 dz 11.00-12.00 mostly 12.00 fr cond loas 10.00 FL 2 dz 10.00-12.00 2 1/2 dz 10.00-12.00 3 dz 10.00-12.00 4 dz 10.00-11.00 ---CHINESE CABBAGE: celcrts FL Nappa 10.00 ---CORN-SWEET: OFFERINGS LIGHT wbcrt FL Yellow 4 1/2 dz few 16.00 White 4 1/2 dz 18.00 few 20.00 ---CUCUMBERS: MARKET ABOUT STEADY WAXED UNLESS OTHERWISE STATED 1 1/9 bucrts FL med 15.00-16.00 fr cond 10-12.00 fr qual 9.00-12.00 mostly 10.00 M few 8.00 ord qual 7-8.00 fr cond 5-6.00 lg% 8.00 fr qual 4-5.00 ctns CA med 15.00 fr qual 10.00-12.00 sml 13.00-14.00 ctns flmwrpd CD Long Seedless sml 12s 9.00 ---EGGPLANT: 1 1/9 bucrts FL med 16.00-18.00 fr qual 13-14.00 3.56 dekaliter ctns med fr appear 14-15.00 fr qual 10-12.00 MX 18s 12.00-16.00 best 16.00 24s 10.00-14.00 ---ENDIVE: MARKET LOWER 1 1/9 bucrts FL 10.00-12.00 10 lb ctns BL Witloof 14.00 ---ESCAROLE: MARKET STEADY 1 1/9 bucrts FL 12.00-13.00 ---GARLIC: MARKET ABOUT STEADY 30 lb ctns CA White super col 28.00-32.00 col 26.00-28.00 super jbo 26.00-27.00 exjbo 24.00 MX Red Chilano super col 36.00 col 34.50 super jbo 31.50 exjbo 28.50 jbo 25.50 ---GREENS: MARKET ABOUT STEADY ctns/crts

bchd FL Swiss Chard 24s 15.00 GA Colard 6.50-7.00 Kale 6.50-7.00 mostly 6.50 some 6.25 Mustard 6.50-7.00 Turnip Tops 6.50-7.00 Rape 6.50-7.00 NC Collard 6.00-6.50 Kale 7.00 Mustard 6.50-7.00 Turnip Tops 6.50-7.00 Rape 6.50-7.00 20 lb ctns MX Broccoli Rabe 14.00-17.00 1/2 bucrts NJ Dandelion 6.00-8.00 ---LETTUCE-ICEBERG: MARKET ABOUT STEADY ctns CA Naked 24s 34.00-40.00 mostly 35.00 Wrapped 24s 30.00-35.00 FL Naked 24s 32.00 few 33.00 ---LETTUCE-OTHER: MARKET BOSTON LOWER, LEAF HIGHER ctns CA Boston 24s 15.00-18.00 crts FL Boston 24s 12.00-14.00 ctns CA Green Leaf 24s 16.00-18.00 mostly 16.00-17.00 FL Green Leaf 24s 12.00 occ higher CA Red Leaf 24s 16.00-18.00 mostly 17.00 FL Bibb 24s 12.00 2.2 lb ctns CA Green Oak Leaf 12.00 red oak leaf 12.00 PA Green Oak Leaf 12.00 red oak leaf 12.00 CA Lolla Rossa 12.00 PA Lolla Rossa 12.00 3 lb flmb mesculin mix ca 14.00 ---LETTUCE-ROMAINE: MARKET HIGHER ctns CA 24s 18.00-21.00 mostly 19.00 few 22.00 1.3 bucrts CA 24s 20.00-24.00 mostly 20.00-21.00 FL 24s 14.00 few 15.00 ---MUSHROOMS: MARKET STEADY 10 lb ctns PA lge 10.00-11.50 mostly 11.00-11.50 med 7.50-9.00 mostly 8.00-9.00 few 7.00 4 qt bkts PA med-lge 4.50-5.00 mostly 4.50-5.00 sml-med 3.50-4.00 3 lb ctns PA Shiitake 18.00 few lwr fr qual 13.00-15.00 ctns 10 12-oz trays flmwrpd PA 8.00-9.00 mostly 8.50-9.00 ---OKRA: TOO FEW SALES TO QUOTE ---ONIONS GREEN: MARKET LEEKS ABOUT STEADY, OTHERS SLIGHTLY LOWER ctns bchd MX 48s 6.00-8.00 mostly 7.00-8.00 crts bchd NJ Leeks 12s 10.00 few 12.00 ctns bulb type lse fl 20s 12.00 ctns bchd CA Leeks 12s 10.00-11.00 MX Leeks 12s 9.00-10.00 ---PARSLEY: MARKET CURLY SLIGHTLY LOWER, PLAIN STEADY crts bchd FL Curly 60s 10.00-12.00 Plain 60s 15.00 ctns bchd TX Curly 60s 11.00-12.00 Plain 60s 15.00 Root 12s 12.00 ---PARSNIPS: 1/2 bucrts/crts NJ 10.00 ---PEAS GREEN: MARKET SLIGHTLY LOWER 10 lb ctns per lb CA Snow Peas .90 GU Snow Peas .80-90 Sugar Snap Peas 1.50-2.00 ---PEAS OTHER: OFFERINGS NONE ---PEPPERS: OFFERINGS LIGHT 1 1/9 bucrts FL Bell Type Green exlge 28.00 lge offerings insufficient to quote med 17.00 fr qual 14.00-15.00 Mxd Red & Green lge fr qual 10.00 fr qual & cond 8.00 ord cond 4.00-5.00 med-lge 14.00 med ord cond 4.00-5.00 Red exlge fr qual & ord cond 6.00-10.00 lge 16.00-18.00 fr qual & ord cond 5.00-8.00 med 13.00-14.00 sml fr qual & cond 7.00-8.00 ---PEPPERS OTHER: OFFERINGS LIGHT 1 1/9 bucrts FL Long Hot 25.00 occ higher ---RADISHES: MARKET SLIGHTLY LOWER ctns tpd 30 6-oz flmbgs FL Red 5.00-6.00 ctns tpd 14 1-lb flmbgs FL Red 5.25 ctns bchd FL Red 24s 6.50-7.00 MX Red 24s 7.00 ---RHUBARB: 20 lb ctns OR 15.00 ---RUTABAGAS: OFFERINGS LIGHT 50 lb ctns NJ 10.00 ---SPINACH: MARKET FLAT TYPE HIGHER, SAVOY TYPE LOWER 1 2/5 bucrts bchd CA Flat 24s 17.00-18.00 bucrts NJ Savoy

9.00-11.00 few 12.00 few 8.00 ctns 12 10-oz flmbgs Repacked Enroute Savoy 9.00-10.00 cel crt NC Savoy fr qual 6.00 NJ Savoy 7.00-8.00 mostly 7.00 ---SQUASH: MARKET ZUCCHINI LOWER, YELLOW STRAIGHTNECK STEADY 1/2 bucrts/crts FL Zucchini sml-med 15.00-18.00 mostly 15.00-16.00 few 14.00 med 12.00-14.00 few 16.00 Yellow Straightneck sml-med 8.00-10.00 1 1/9 bucrts FL Zucchini lge 13.00-14.00 ---SWEET POTATOES: MARKET STEADY CURED 40 lb ctns NC U.S. One Jewels med 8.00-8.50 ---TOMATOES: MARKET ABOUT STEADY 25 lb ctns FL U.S. Comb or Better pink to light red xlge 15.00 fr cond 13.50-14.00 lge 12.00-13.00 mostly 13.00 Vine Ripes pink to light red xlge 13.00-14.00 Local Repack 85% U.S. One or Better xlge 19.50 lge 17.50 med 15.50 flts 2 yr MX Vine Ripes red 5x6s 7.00 ---TOMATOES, CHERRY: LFFERINGS LIGHT flts 12 1-pt bkts MX 13.00 ---TOMATOES, PLUM TYPE: 25 lb ctns MX light red to red 9.00-11.00 ---TURNIPS: 25 lb sks NJ Purple Top 5.50 bucrts nj lge 7.00 ---VEGETABLES OTHER: MARKET STEADY 3 kg ctns GU Radicchio 13.00 IT Radicchio 13.00-14.00.

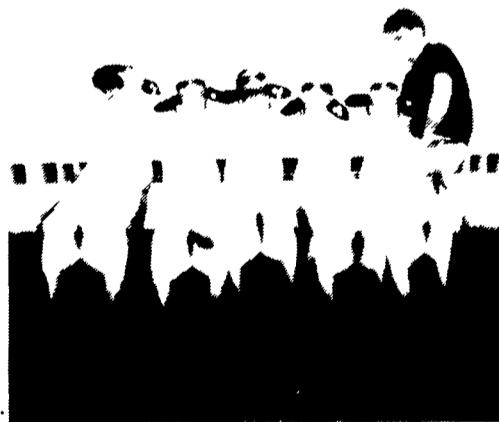
Philadelphia Potato & Onion

Philadelphia, Pa.

Wednesday, April 21, 1993

ONIONS AND POTATOES ---ONIONS DRY: MARKET GLOBE TYPE HIGHER, OTHERS ABOUT STEADY US#1 OR GENERALLY GOOD QUAL AND COND UNLESS OTHERWISE STATED. NEW CROP Yellow Grano MX 50 lb ctns jbo 30.00-32.00 few 33.00 TX 50 lb sks jbo 30.00-33.00 mostly 32.00 med 21.00-22.00 50 lb ctns jbo preferred variety 35.00 White MX 50 lb sks jbo 28.00-30.00 TX 50 lb sks jbo 33.00-35.00 fair qual 30.00 Red MX 25 lb sks jbo 14.00 TX 25 lb sks jbo 16.00-18.00 lge 13.00-14.00 OLD CROP Yellow Globe Type NY 50 lb sks med 15.00-16.00 fair qual 12.00 mstr ctnr 20 2-lb mshbgs med 12.00-13.00 Red NY 25 lb sks lge 8.00-9.00 med 5.00-8.00 ---POTATOES: MARKET ABOUT STEADY US#1 SZ A WASHED OR BRUSHED UNLESS OTHERWISE STATED NEW CROP Round Red FL 50 lb sks 17.00-22.00 few 23.00 occ 16.00 fair qual & cond 5.00-6.00 sz B 17.00-22.00 few 23.00 fair qual 12.00 Round White FL 50 lb sks 20.00-23.00 sz B 20.00-23.00 OLD CROP Russet Burbank ID bld 10 5-lb flmbgs non sz A 8.00-9.00 50 lb ctns 70s 16.00-18.00 mostly 16.00-17.00 80s 15.50-18.00 mostly 16.00-16.50 90s 12.00-14.00 mostly 12.00-13.00 few loas 11.00 100s 9.00-12.00 mostly 10.00-11.00 Norkotah CD New Brunswick 50 lb ctns 90s 9.00-10.00 100s 7.50-8.00 120s 7.50 Prince Edward Island 50 lb ctns 100s 7.50 WI 50 lb ctns 70s 12.00-13.00 80s 12.00-13.00 90s 9.00-10.00 mostly 9.00 100s 8.00 Round Red MN/ND 50 lb sks 7.00-8.00 Round White CD New Brunswick 50 lb sks 4.50-5.00 lge 5.75-6.00 Prince Edward Island 50 lb sks 4.50-5.00 mostly 4.75 lge 5.50-6.00 mostly 6.00 ME 50 lb sks 4.00-5.00 lge 6.50

MEAT MATTERS MOST



HOME BRED lambs like these have been winning for me and my buyers in the Mid-Atlantic area. They LOOK GOOD. They HANDLE GOOD. They CUT GOOD.

1993 Models Arriving Now!

Over 100 Lambs On Ground & More Arriving Daily.

Contact me for meaty rams, and club lambs

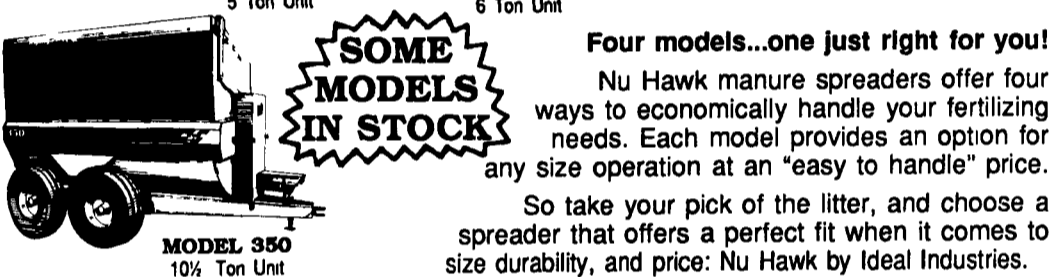
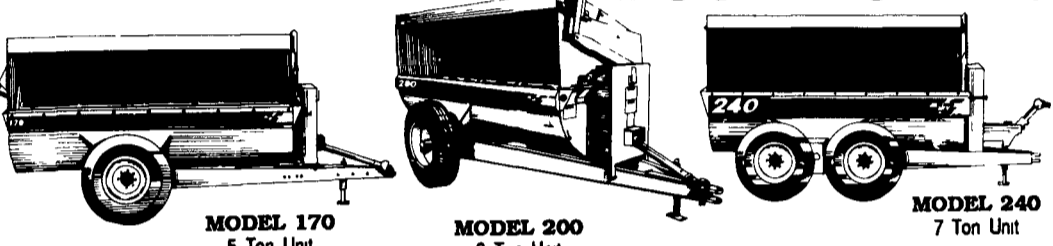
Robert Dinsmore
5842 Broad Run Rd.
Jefferson, MD 21755

1-800-331-9122

Evenings 301-371-4483

HAMPSHIRE SHROPSHIRE CLUB LAMBS

CHOICE! FOUR MODELS



Four models...one just right for you!

Nu Hawk manure spreaders offer four ways to economically handle your fertilizing needs. Each model provides an option for any size operation at an "easy to handle" price.

So take your pick of the litter, and choose a spreader that offers a perfect fit when it comes to size durability, and price: Nu Hawk by Ideal Industries.

Call For Dealer Located Nearest You

539 Falling Spring Road
P.O. Box 219
Chambersburg, PA 17201-0219
717-263-9111

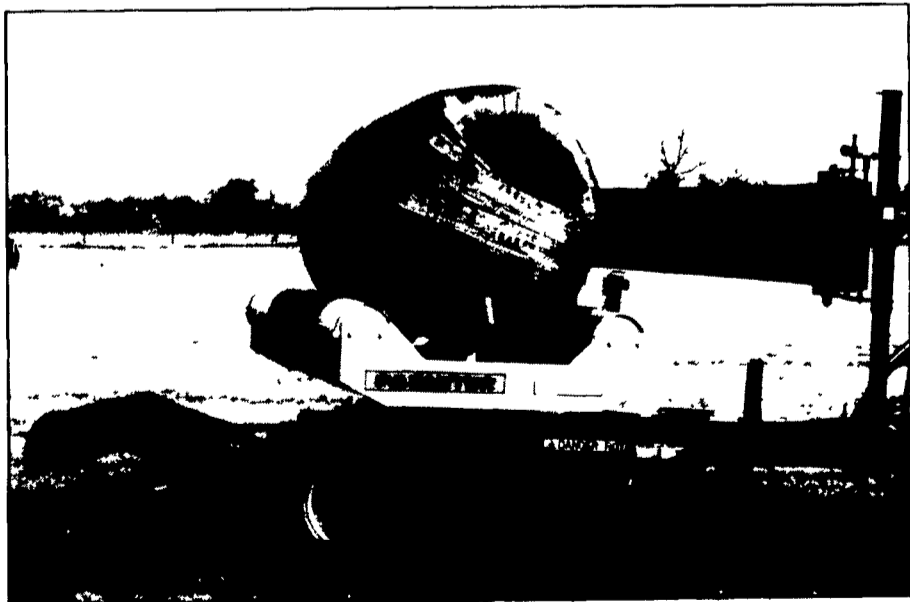
RYDER SUPPLY CO.

WRAP IN THE QUALITY

WITH A FULL RANGE OF BALE WRAPPERS FOR FARMERS AND CONTRACTORS

- Mounted and trailed machines.
- In Cab cable controls with the option of electric on the TR76.
- Handles bales up to 5' 6" in diameter and up to 1200 kg in weight.
- Handles 500mm or 750mm film.
- Twin rams on TR76 loading arm.
- Mechanical cut and hold on TR76.
- Bale counter standard.

BUILT FOR RELIABILITY AND STRENGTH



PARMITER

For the name of your local dealer or a demonstration, contact:

HAMILTON EQUIPMENT, INC.

567 S. READING RD., P.O. BOX 478, EPHRATA, PA 17522
TELEPHONE: 1-717-733-7951

