

1970 C60 truck twin screw  
427 gas engine, \$2500  
OBO 717-273-2910

1972 Mack truck chassis  
for parts, asking \$2,000  
(717)273-6309 evenings

1973 Diamond Rio 10  
Wheeler Dump, 350 BC IV  
8Spd., Good Condition  
\$18,000, 1979 Mack Single  
Axle Dump 300, 5Sp., Ex-  
cellent Condition \$15,000,  
83 GMC ¾ Ton Pick-Up  
Truck 4X4, 350 Auto, Good  
Condition, \$5,000 OBO  
1979 Chevy Suburban  
4X4, 350 Auto Good Con-  
dition, \$2,000 OBO  
215-343-1830

1973 White 9000 S/A  
dump, 238 Detroit,  
10-speed, R/R, ready to  
work \$5495 Inspection  
6/93 717-292-5030

1974 1700 Loadstar Inter-  
national, fuel delivery truck,  
2400 gal tank, \$6000  
717-256-3233

1974 IH 1800 Loadstar,  
392 V8, 5 speed, 2sp,  
23 000lb rear, 12,000ft, air  
brakes, 15 custom made  
dump grain body, 60' take  
off sides, \$5000  
410/239-3226



**1975 Chevy  
Dump Truck**  
New Brakes, Work Ready  
**717-765-4338**



**1980 GMC BRIGADIER**  
14' Stake body dump, 35,000 GVW,  
3208 CAT diesel, 10 speed Road Ran-  
ger trans., air brakes.  
**\$7,000.00**  
**(717) 397-5264**



**1981 Int. DT466**  
w/Turbo, 210 HP, Motor Rebuilt,  
w/18' Steel Rollback w/Winch,  
11 MPG  
**\$13,500**  
**LESTER ZIMMERMAN**  
Myerstown, PA  
**(717) 949-3582**

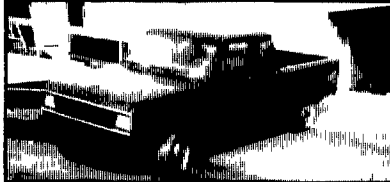
*Anthony*  
**Landis**

**AUTO BODY  
& SALES**  
1701 B Division Hwy.  
New Holland, PA • 717-355-0644

*Specializing In Rebuilt Collision Damage Vehicles*

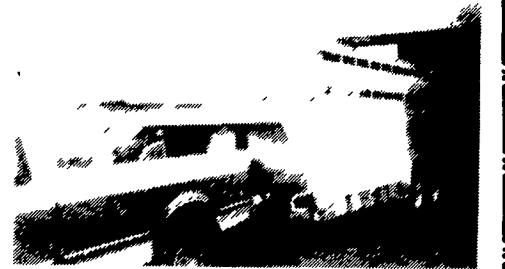


**'88 CHEVY S-10 EXT CAB**  
4x4, Tahoe, V6, AT, 106,000  
Mi., Engine Fire, Parts or  
Whole ..... **Call For Price**



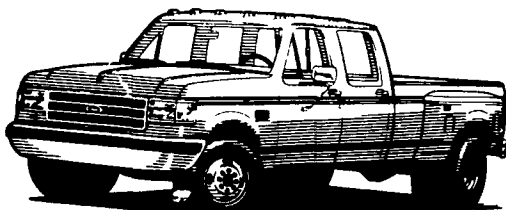
**'88 FORD RANGER Ext. Cab,**  
4x4, STX, V6, 5 Spd., 107,000  
Mi., Needs Front Pumpkin, Left  
Fender ..... **\$2,950**

**REM WELD**



**Custom Built Steel & Aluminum  
Trailers, Flatbed & Livestock**  
Call For Reasonable Prices  
**(717) 966-9188**

**'93 FORD CREW CABS**



**IN STOCK:**

- (4) '93 Diesel, Stick
- (1) '93 Diesel, Auto
- (4) '93 Centurons, Diesel,  
Stick

**SHEEHY LEBANON**

**FORD • MERCURY • LINCOLN**  
9-9 Daily, 9-5 Saturday Sheehy Hotline (717) 272-7671 or 533-5293  
20TH & CUMBERLAND STS. - RT. 422 WEST

1974 Int 1 ton truck, 10'  
dump body, inspected til  
1994, dual wheels, \$3,100  
(215)885-1032

1975 Ford F800, 549 Gas  
Motor, 5Spd Trans, 4Spd  
Auxiliary, 15' Stainless  
Steel Spreader Body Very  
Nice Condition  
215-794 7259

1975 Mack U Model tan  
dem axle trailer 237 en-  
gine 5 speed Mack trans  
connected to 1971 Trail  
mobile trailer, 40' tandem  
axle w/ center mounted H  
model Prentice loader  
pulp wood grapple and  
pony motor, fair condition,  
tractor & trailer together  
\$5000 OBO  
215/626-2555

1976 Int single axle dump  
truck 237 Cummins 9  
speed trans, \$5 500 OBO  
(717)927-9235

1977 Int School Bus, new  
392 engine, air brakes,  
5-speed, excellent condi-  
tion Somerset Co  
814/445-7719

1978 IH 1750, 5+2, DT466,  
hyd brakes, 10 00x20 tires,  
11' new Leader hyd  
spreader body, \$6,500  
(703)837-1305

1978 International 2050  
single axle dump truck,  
35,000 GVW, rebuilt, 3208  
Cat engine \$7000 OBO  
Call Jerry 717-463-3701

1978 White Roadboss, tan-  
dem w/300 Mack engine,  
jake brake, A/C, PS, air  
ride, \$7,000 1979 Benson  
dump trailer 26', \$7,000  
Bucks County  
(215)794-8457

1979 GMC 7000 spray  
truck, 1200 gallon tank with  
50' hydraulic fold booms,  
1969 Ford F-800 single  
axle truck tractor Call  
410-820-2093 Days,  
410-820-2051 nights

1979 International, 466DT  
motor w/21' Eby aluminum  
cattle body 201/694 3156

**EBY**

**USED  
EQUIPMENT  
SALE**

**POSSUM BELLY  
TRAILERS**

- 1984 Barrett 46'x96"x13'6"
- Cattle Trailer Jailhouse
- 1983 Barrett 48'x96"x13'6"
- Cattle Trailer
- 1983 Wilson 45'x96"x13'4"
- Cattle/Hog Combo
- 1982 Wilson 45'x96"x13'2"
- Cattle Trailer
- 1982 Wilson 45'x96"x13'6"
- Cattle-Pot

**STOCK  
TRAILERS**

- 1989 10' Eby Bumper Hitch
- 1987 26' Eby Goosneck
- 1986 20'x8' Aluminum
- Wallinga
- 1985 Super Goose
- 20'x8'x6'10"
- 1983 Eby 18'x7'6"x6'6"
- Goosneck

**BODIES**

**NEW**

- 1993 21'x6'6"x96" Double-  
Decker

**Call For Special Pricing**

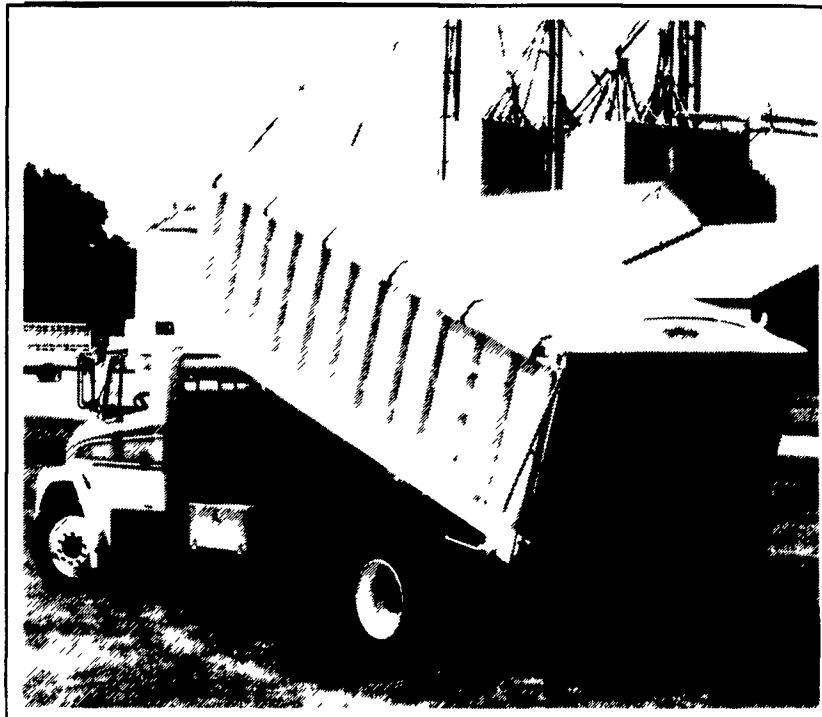
- Omaha Steel Cattle/Grain  
Body, 14'x42" Sides
- (2) 12' Eby Aluminum  
Cattle Body
- 17' Eby Cattle Body
- 21' Eby Aluminum -Double  
Deck
- 20' Fruehauf - Deck-Rail &  
Decking
- 8 1/2' Eby Aluminum -  
Chicken Body

**M.H. Eby, Inc.**

1194 Main Street (Route 23)  
Blue Ball, PA 17506  
(717) 354-4971 (800) 292-4752  
FAX (717) 355-2114

4435 State Route 29  
West Jefferson, OH 43162  
(614) 879-8901 (800) 752 0507  
FAX (614) 879-8904

**In grain bodies,  
aluminum makes Sense.**



**CHECK OUT THESE FEATURES/BENEFITS**

- Up to 40% lighter than steel, for greater payload
- Designed for long life
- Resale value
- Corrosion resistant, never needs painting
- Appearance to complement any truck
- Complete list of popular options, including  
tailgates, tarps and sides.

**GRAIN BODIES**

**STANDARD LENGTHS:** 12', 14', 15', 16', 17', 18', 20', 22', 24'

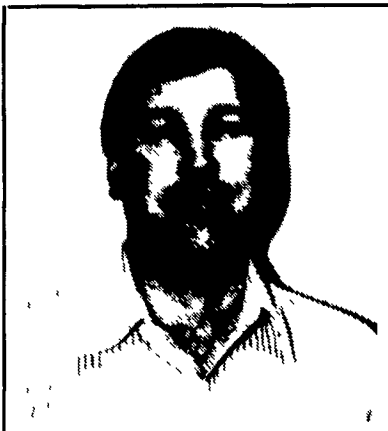
**OVERALL WIDTHS:** 96" standard, 102" optional

**SIDE HEIGHTS:** 48" standard, 54", 60" or 72" optional  
(other heights available on request)

Eby Aluminum Agri-Dump Bodies pay  
off in dependable long-term service.  
Their all-aluminum construction means:

- Greater payload efficiency
- Maintenance-free service
- Substantially higher resale value.

Eby's time-tested design is available in  
lengths to 24' for grain bodies and  
10 1/2' for general purpose dump bodies.  
A long list of standard features such as  
tarp rail, built-in steps, aerodynamic  
uprights and Harsh hoist is complement-  
ed by a full range of custom options,  
including tailgates, Wahpeton tarps and  
grain chutes.  
When you select your next grain body  
or general purpose dump body, consider  
the value that aluminum offers. It's a  
worry-free investment in your future.



**Meet KEVIN SEIBERT -**

**Your Agri-Body Specialist**

With his agricultural background, Kevin understands  
your needs. His thorough knowledge of the agricultural  
and truck body business lets him match your needs with  
our custom manufacturing capabilities. Call him for a  
quotation on your next Agri-Body requirement.

**EBY**

**M.H. Eby, Inc.**

1194 Main Street (Route 23)  
Blue Ball PA 17506  
(717) 354-4971 (800) 292-4752  
FAX (717) 355-2114

**SPECIAL APRIL OFFER**

**FREE FITTED TARP**  
**Thru 4-30-93**

**Committed to the Agri Transportation Business**