

(Continued from Page A9)

42.00 BREAKING UT. & COMM. 2-4 40.00 - 42.00 CANNER AND LOW CUTTER 1-2 37.00.

SLAUGHTER BULLS 2 HEAD BULLS Y.G. 1-2, 900-1300 LB. 60.00 Y.G. 1-2, 1300-1600 LB. 56.00.

FEEDER CATTLE 220 HEAD STEERS MEDIUM 1 LARGE 1 SMALL 1 MED & LARGE 2 200-300 101.00 101.00 - 104.00-115.00 300-400 - 80.00-96.00 87.00- 95.50 400-500 - 88.00-90.00 90.00- 94.00 500-600 90.00- 94.50 90.00- 94.50 88.50 92.00- 95.50 600-700 85.00- 87.50 85.00- 87.50 80.00- 83.00 85.00- 88.00 700-800 75.00 75.00 70.00-77.00.

HEIFERS MEDIUM 1 LARGE 1 SMALL 1 MED & LARGE 2 200-300 84.00- 85.00 84.00- 85.00 85.00 - 300-400 77.00- 81.50 77.00- 81.50 75.00- 82.00 75.00- 85.00 400-500 79.50- 85.00 79.50- 85.00 70.00- 78.00 77.00- 80.00 500-600 77.00- 79.00 77.00- 79.00 68.00- 76.00 63.00- 78.00 600-700 70.00- 74.00 70.00- 74.00 70.00- 73.00 70.00- 72.00 BULLS MEDIUM 1 LARGE 1 SMALL 1 MED & LARGE 2 200-300 - - - 103.00-108.00 300-400 86.00- 94.00 86.00- 94.00 83.00- 84.00 84.00-100.00 400-500 84.00- 86.00 84.00- 86.00 71.00- 82.00 70.00- 81.00 500-600 79.00 79.00 75.00 69.00 600-700 - - - 700-900 - - 66.00- 74.00 66.50.

Westminster Livestock

Hagerstown, Md.

April 20, 1993

Report supplied by auction

SLAUGHTER COWS 112 HEAD, MARKET ACTIVE! 2.00 HIGHER. UTILITY 48.00-52.00; HIGH DRESSING 52.00-55.50, CANNERS 44.00-48.00, SHELLY 44.00 DOWN BULLS: YG#1 1200-1800 LBS. 62.00-64.50, YG#2 55.00-61.00, LOW DRESSING 51.00-54.00 FED STEERS: FEW HIGH CHOICE

1100-1300 LBS. 79.00-81.25; CHOICE 75.00-78.00; LOW CHOICE 72.00-75.00; HIGH CHOICE HOLSTEINS TO 70.75; CHOICE 67.00-69.00.

FED HEIFERS: CHOICE 1100 LBS. TO 75.50; 950 LBS. TO 72.50; SELECT 66.00-69.00.

VEAL CALVES: FEW CHOICE 200-300 LBS. 90.00-105.00, CULLS, FEW OFFERED.

FARM CALVES: HOLSTEIN BULLS #1 95-120 LBS. 135.00-154.00, 80-90 LBS 100.00-130.00; HOLSTEIN HEIFERS 80-90 LBS TO 147.00, BEEF X BULLS TO 167.00, BEEF X HEIFERS TO 115.00

BUTCHER HOGS. US#1&3 215-260 LBS 41.50-42.85, 280-290 LBS TO 37.25, 300-370 LBS. 33.00-37.00.

SOWS 300-500 LBS. 33.00-38.00, 500-700 LBS 40.00-42.25

BOARS, 400-700 LBS 32.50-33.00, 225-260 LBS. 33.00-34.50

STOCK CATTLE: 340 HEAD, ACTIVE BIDDING! STEERS 200-400 LBS 87.00-113.00, 400-600 LBS 82.00-99.00, 600-800 LBS 72.00-88.00, 800-1000 LBS 65.00-74.00

HEIFERS 300-500 LBS 73.00 86.00, 500-700 LBS 70.00-80.00, 700-900 LBS 66.00-73.00

BULLS 200-300 LBS 85.00-117.00, 300-500 LBS 80.00-96.00, 500-700 LBS 75.00-90.00, 700-900 LBS 67.00-75.00

LAMBS CHOICE 100-115 LBS 70.00-75.00, 60-80 LBS 68.00-78.00, 30.60 LBS 74.00-90.00, 20-30 LBS 82.00 122.00

SHEEP 20.00-34.00 GOATS LARGE 60.00-80.00, MEDIUM 35.00-60.00; SMALL 15.00-37.00

PIGS AND SHOATS 120 HEAD, STRONG DEMAND! BY THE HEAD FROM TESTED HERDS. 20-30 LBS 35.00-47.00; 30-50 LBS. 40.00-52.00, 50-60 LBS. 45.00-54.00; 70-95 LBS 48.00-54.00; BY THE POUND, 100-120 LBS 44.00-54.00.

Four States Livestock

Hagerstown, Md. April 21, 1993

Report supplied by Auction

SLAUGHTER COWS: 168 HEAD, 1.00-2.00 HIGHER. UTILITY 47.00-51.00; HIGH DRESSING 52.00-54.00; CANNERS 43.00-47.00; SHELLY 43.00 DOWN.

BULLS: YG#1 1500-1900 LBS. 61.00-65.00; YG#2 55.00-60.00.

FED STEERS: 75 HEAD, 1.00-3.00 LOWER. HIGH CHOICE TO PRIME 1100-1450 LBS. 78.00-82.50; FEW 1500-1600 LBS. 78.00-80.00; CHOICE 73.00-77.00; SELECT 68.00-73.00.

FED HEIFERS: FEW OFFERED. CHOICE 900-1000 LBS TO 70.50; SELECT HOLSTEINS 1100 LBS. 56.50.

VEAL CALVES: CHOICE, NONE; CULLS 70-100 LBS. 35.00-42.00; WEAK/ROUGH 35.00 DOWN.

FARM CALVES. HOLSTEIN BULLS #1 95-120 LBS 130.00-146.00, 80-90 LBS 100.00-130.00, HOLSTEIN HEIFERS 95 115 LBS TO 172.00, 75-90 LBS. 100.00-165.00, BEEF X BULLS 150.00-210.00, HEIFERS 125.00-175.00.

BUTCHER HOGS, US#1&3 215-260 LBS 41.25-43.00; 200-215 LBS 38.00-40.00, 280 LBS TO 38.75; 300 LBS. 10.35.50

SOWS 300-500 LBS 33.00-38.00, 500-700 LBS FEW TO 39.25

BOARS 300-400 LBS 32.50 STOCK CATTLE 308 HEAD.

STEERS 200-400 LBS 90.00-104.00, 400 600 LBS 85.00-98.00, 600-700 LBS 78.00-93.00, 700-800 LBS. 75.00-85.00, 800-1000 LBS 66.00-76.00

HEIFERS 300-500 LBS 75.00-90.00, 500-700 LBS 70.00-82.00, 700-800 LBS 65.00-73.00

BULLS 200-400 LBS 85.00-100.00,

400-600 LBS. 75.00-87.00; 600-700 LBS. 65.00-81.00; 700-900 LBS. 60.00-73.00.

DAIRY REPLACEMENTS: FEW OFFERED. FEW MED. 650.00-800.00; HOL SERVICE BULLS 500.00-925.00 HEAD; FEW 900-1200 LBS. 58.00-63.00/HUNDRED.

SHEEP 15.00-34.00.

LAMBS: CHOICE 70-90 LBS. 80.00-84.00, GOOD 50 LBS TO 73.00; FEEDERS 40 LBS TO 49.00

GOATS: LARGE 60.00-73.00, MEDIUM 30.00-60.00; SMALL. 20.00-32.00.

PIGS AND SHOATS: BY THE HEAD FROM TESTS HERDS, 7 HEAD 25 LBS. AT 32.00; 11 HEAD 40 LBS. AT 47.00; 9 HEAD 85 LBS. AT 65.00.

NEXT WED., APRIL 28. 1 GRADE HOLSTEIN SERVICE BULL 750 LBS., 1 YORKSHIRE SERVICE BOAR, 300 LBS. (TESTED). ANOTHER SPECIAL FEEDER CATTLE SALE WILL BE HELD ON WED., MAY 5.

Keister's Middleburg Auction

Middleburg, Pa.

Tuesday, April 20, 1993

Report Supplied by Auction

CATTLE 342... Supplied by the auction. Compared to last Tuesday's market. STEERS: Choice 78.00-81.25, Good 74.00-77.75, Standard 65.00-73.75. HOLSTEINS: Choice 70.00-73.50, Good 65.00-69.75, Standard 58.00-64.75. HEIFERS: Choice 76.00-81.25, Good 60.00-75.00. COWS. Breaking Utility and Commercial 48.50-53.75, few to 55.25, Cutter & Bon. Utility 46.00-52.75, Canner and Low Cutter 41.50-45.75. Shells 35.00-41.00. BULLOCKS: Choice

65.00-68.75, Good 62.00-65.00. BULLS: Yield Grade No. 1 1000/2120 lbs. 58.25-61.75, No. 2 1000/2120 lbs. 50.00-58.00. FEEDER CATTLE: Steers: 450/1050 lbs. 65.00-81.00, heifers: 400/820 lbs. 62.00-71.00.

CALVES 161... VEALERS: Good 80.00-90.00, Standard and Good 60/100 lbs. 40.00-70.00. RETURNED TO FARM: Holstein bulls No. 1 80/90 lbs. 80.00-120.00, No. 2 90/120 lbs. 140.00-162.50; Holstein heifers No. 1 80/125 lbs. 140.00-197.50.

HOGS 551.. BARROWS AND GILTS: US No. 1 225/250 lbs. 45.00-46.25, No. 1-2 220/250 lbs. 42.00-44.00, 1-3 210/300 lbs. 38.00-41.75, few 1-3 175/205 lbs. 32.50-38.00. SOWS: 1-3 400/620 lbs. 38.00-42.00, 2-3 34.00-38.00. BOARS: 31.50-32.75.

FEEDER PIGS 231...US 1-3 20/35 lbs. 20.00-38.00. - all per head.

SHEEP 55...High Choice and Prime 25/45 lbs. Spring sl. lambs 100.00-130.00, Good 50/130 lbs. 45.00-65.00. Slaughter sheep: 14.00-26.00.

GOATS 23...Small 15.00-35.00, Large 35.00-72.50.---- all per head.



KEN CLUGSTON
(717) 665-6775

CRAFT-BILT CONSTRUCTION INC.

FARM-HOME BUILDING
1242 Breneman Road
MANHEIM, PA 17545
PH: (717) 665-4372

BUILDING & REMODELING FOR —
DAIRY RESIDENTIAL
SWINE POLE BUILDINGS
BEEF STORAGE

ATTENTION

GROWERS

• PRODUCE • GREENHOUSE • NURSERY

AUCTION

NOW OPEN

**Tuesday - Thursday
Saturday 11 AM to ?**

Selling Flowers, Bedding Plants And Shipped Produce

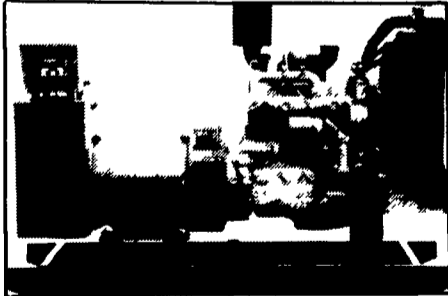


Leinbach
Produce Auction
1120 Ritner Hwy. Route 11
Shippensburg, PA 17527

PAUL W. LEINBACH
MANAGING DIRECTOR

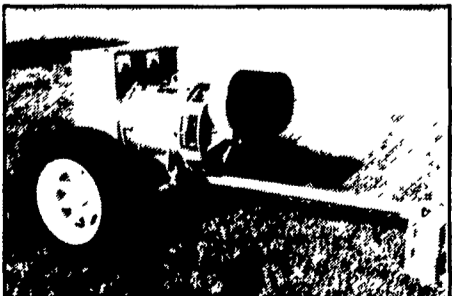
717-532-5511
800-346-2334

GENERATORS



**AUTOMATIC and
MANUAL SYSTEMS**

DIESEL
L.P. GAS
NAT. GAS
NEW & USED



**LEROY SOMER
PTO ALTERNATORS**

BRUSHLESS
INDUSTRIAL GRADE
11 to 60 KW

READY FOR THE NEXT STORM?

For Sales and Service Call The People Who Know Generators

MARTIN ELECTRIC PLANTS

280 Pleasant Valley Rd., Ephrata, PA 17522-8620

Tel: 717-733-7968 Fax: 717-733-1981

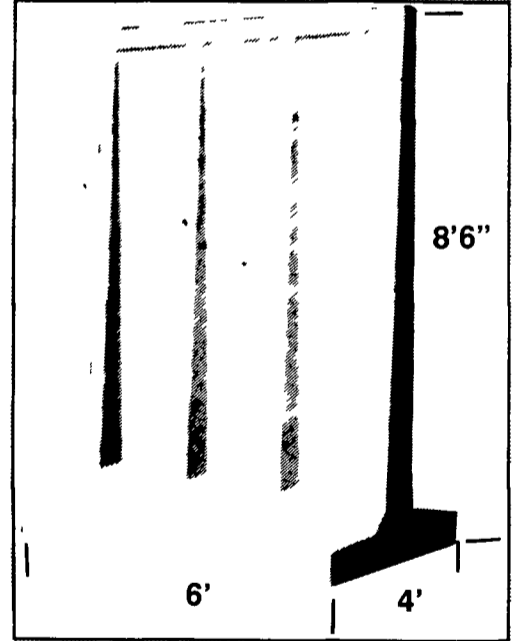
FRANK A. FILLIPPO, INC. - WANTED -

**DISABLED & CRIPPLED
COWS, BULLS & STEERS**

**Call: Frank Fillippo -
Residence - 215-666-0725
Steven Fillippo 215-666-7976**

**OUTSIDE
T-WALL
BUNKER
SILO
SECTIONS**

- Made To Be Bolted Together
- Can Be Dismantled And Reinstalled Easily



ALSO AVAILABLE IN CENTER DIVIDER T-WALL SECTIONS

Other Products:

- H & J Bunks
- Concrete Hog Penning
- Hog & Cattle Slats
- Concrete Post & Beams
- Bunker Silos

Give us a call for more information on hog, beef, dairy and heifer barns.



477 East Farmersville Rd.
New Holland, PA 17557
(717) 355-2361

