


Virginia



Cattle & Hogs

Virginia Weekly RICHMOND VA APRIL 14, 1993

WEEKLY REVIEW IN VIRGINIA REVIEW OF VIRGINIA DIRECT HOGS FOR THE PERIOD APRIL 7-13, 1993. RECEIPTS FOR COUNTRY BUYING STATIONS IN VIRGINIA FOR THE PERIOD TOTALED 1633 HEAD. RECEIPTS FOR DELIVERY TO THE PLANT (WITHIN A 30 MILE RADIUS) FOR THE PERIOD TOTALED 2334 HEAD. THE VIRGINIA DIRECT HOG MARKET FOR TUESDAY APRIL 13, CLOSED \$1.00 HIGHER COMPARED TO LAST TUESDAY'S TRADING.

BARROWS AND GILTS: VIRGINIA COUNTRY POINTS U.S. 1-3 220-250 LBS 41.50-43.50

LOCAL PLANT DELIVERED (30 MILE RADIUS)
US 1-2 220-250 LBS. 44.50-45.00 US 2-3 220-250 LBS. 44.00-44.50 US 1-3 200-210 LBS. 41.00-41.50 US 1-3 210-220 LBS. 43.00-43.50 US 2-4 250-260 LBS. 42.00-42.50 US 2-4 260-270 LBS. 40.00-40.50

SLAUGHTER STEERS AND HEIFERS 2%; SLAUGHTER COWS 7%

SLAUGHTER BULLS 1%, SLAUGHTER CALVES AND VEALERS 0%; FEEDER CATTLE UNDER 600 LBS 68%, OVER 600 LBS 22%

PRICE RANGES FOR VIRGINIA WEEKLY AUCTIONS

SLAUGHTER CATTLE: TOTAL HEAD COUNT 0 STEERS: CHOICE 2-3 900-1100 LBS ---

HEIFERS: STANDARD 1-2 850-1100 LB ---- CHOICE 2-3 900-1100 LBS ---- CHOICE 2-3 1100 LBS & OVER ----

SLAUGHTER COWS TOTAL HEAD COUNT 845 UTILITY & COMMERCIAL COWS 38.50-49.75

SLAUGHTER BULLS: HEAD COUNT 95 BULLS - 1-2 900-1300 LBS 50.00-67.50 1-2 1300-1600 LBS 50.00-65.25 1-2 1600 LBS & OVER 52.00-66.50

SLAUGHTER CALVES & VEALERS TOTAL HEAD COUNT -- HEAD CALVES - GOOD AND CHOICE 250-500 LBS ---- VEALERS - CHOICE & PRIME 200-350 LBS ----

SLAUGHTER LAMBS TOTAL HEAD COUNT 113 (NEW CROP) CHOICE FEW PRIME 1-2 FEW 3 85-100 LBS 73.00-74.50 FEW 50.00 GOOD & FEW CHOICE 1-2 50-70 LBS 67.00-70.00

70-85 LBS 84.00 (WOOLED) CHOICE FEW PRIME 1-2 FEW 3 65.00-68.00

SLAUGHTER HOGS TOTAL HEAD COUNT 49 US 1-3 200-250 LBS 40.00 SOWS US 1-3 300-500 LBS 26.00-35.00 500 LBS & OVER 36.00-41.00

FEEDER CATTLE TOTAL HEAD COUNT FOR ALL WIEGHTS 9602 STEERS: MEDIUM 1 200-300 100.00-110.00 300-400 91.50-113.00 FEW 118.00 400-500 88.00-107.00 FEW 110.00 500-600 90.00-101.00 FEW 108.00 600-700 82.00- 94.00 700-800 74.00-84.00 800-900 68.75- 81.00

HEIFERS: MEDIUM 1 300-400 80.00-100.00 400-500 77.00- 95.50 500-600 73.50- 90.00 600-700 70.00-83.00 700-800 68.50- 77.00 800-900 70.00

STATE GRADED SLAUGHTER CATTLE SALE AT MADISON, VA ON APRIL 10, 1993. 97 HEAD SOLD.

STEERS CHOICE 2-3, 1000-1150 LBS 76.00-77.75 CHOICE 2-3, 1150-1300 LBS 77.00-80.00 CHOICE 2-3, 1300-1450 LBS 76.00-77.25 CHOICE 2-3, 1450 LBS & OVER 75.00 SELECT 2-3, 1000-1200 LBS 70.00-78.00

HEIFERS CHOICE 2-3, UNDER 900 LBS 71.25-72.50 CHOICE 2-3, 900-1050 LBS 72.50-77.50 CHOICE 2-3, 1050-1300 LBS 78.50-79.25 SELECT 2-3, 850-1100 LBS 71.00-79.00

STATE GRADED SLAUGHTER CATTLE SALE 148 HEAD SOLD AT FREDRICKSBURG, VA ON APRIL 8, 1993.

STEERS CHOICE 2-3, 1000-1150 LB. 75.25 - 79.00 CHOICE 2-3, 1150-1300 LB. 75.50 - 80.00 CHOICE 2-3, 1300-1450 LB. 77.25 - 80.75 CHOICE 2-3, 1480 LBS & OVER 72.00 SELECT 2-3, 1000-1200 LB. 70.00 - 75.50 HEIFERS CHOICE 2-3, 900-1100 LB. 74.25 - 78.75 CHOICE 2-3, 1100-1300 LB. 75.25 - 79.00 SELECT 2-3, 850-1100 LB. 71.00 - 78.75

North Virginia RICHMOND VA APRIL 15, 1993

BLACKSTONE - SOUTHSIDE AUCTION ON 14-APR-93 PRICES BASED ON OUT WEIGHTS

SLAUGHTER CATTLE 71 HEAD SLAUGHTER COWS 54 HEAD COWS CUTTER & BONING UT. 1-3 44.00 - 46.00 HIGH DRESSING 47.50 - 50.00 BREAKING UT. & COMM. 2-4 46.25 - 48.50 HIGH DRESSING 48.75 - 50.50 CANNER AND LOW CUTTER 1-2 39.00 - 46.25 SLAUGHTER BULLS 17 HEAD BULLS Y.G. 1-2, 900-1300 LB. 53.75 - 60.00 Y.G. 1-2, 1300-1600 LB. 53.00 Y.G. 1-2, 1600 LBS. & OVER 58.75 - 66.50

FEEDER CATTLE 421 HEAD STEERS 141 HEAD STEERS MEDIUM 1 LARGE 1 SMALL 1 MED & LARGE 2 200-300 113.00 113.00 - 105.00-110.00 300-400 99.00-113.00 99.00-113.00 - 102.00-114.00 400-500 96.50-104.00 109.00-112.00 80.00- 85.50 87.00- 98.00 500-600 91.00-100.50 91.00-100.50 84.50- 86.50 88.00- 99.00 600-700 79.00-84.00 79.00- 84.00 - - 700-800 78.00-79.50 78.00- 79.50 - -

HOLSTEIN STEER 75 HEAD MED & LARGE 2 300- 500 77.00- 87.00 500- 700 68.00- 71.50

HEIFERS 128 HEAD HEIFERS MED&LGE 1 SMALL 1 MED & LARGE 2 200-300 - - 85.00- 88.00 300-400 82.00-93.00 75.00- 81.00 82.50- 88.50 400-500 77.00- 86.50 72.00- 76.50 81.50- 86.50 500-600 78.50- 85.00 70.00- 74.00 75.00-76.00 600-700 70.00- 79.00 - -

BULLS 77 HEAD BULLS MED&LGE 1 SMALL 1 MED & LARGE 2 300-400 94.00-103.00 - - 400-500 89.00- 97.00 85.00- 87.50 87.00- 93.50 500-600 80.00-83.00 - -

COWS RETURNED TO FARMS 24

HEAD - M&L-2 8-10 YRS 800-900 LBS \$41.50-48.00/CWT. M&L-2 4-8 YRS 750-900 LBS \$48.00-53.00/CWT. M&L-1 8-12 YRS 900-1100 \$42.00-54.50/CWT.

COWS WITH CALVES AT SIDE 10 HEAD - M&L-1 8-10 YRS 900-1100 W/C 80-140 LBS \$620.00-700.00. M&L-2 8-12 YRS 850-950 W/C 100-200 LBS \$570.00-600.00. M&L-2 10-15 YRS 800-950 LBS W/C 60-100 LBS \$470.00-550.00.

HEIFERS (BRED) 4 HEAD - 650-800 LBS \$51.50-62/CWT

BABY CALVES RETURNED TO FARMS 15 HEAD - NEWBORN TO 4 WKS \$82.00-105.00 100 LBS+ \$100.00-132.50/CWT.

RICHMOND VA FED STATE APRIL 15, 1993 ORANGE AUCTION ON 14-APR-93

SLAUGHTER CATTLE 149 HEAD SLAUGHTER STEERS & HEIFERS 15 HEAD HEIFERS SELECT 2-3, 850-1100 LB. 61.00 - 69.00 SLAUGHTER COWS 112 HEAD COWS CUTTER & BONING UT. 1-3 44.00 - 49.00 HIGH DRESSING 51.00 - 52.00 BREAKING UT. & COMM. 2-4 45.00 - 50.00 HIGH DRESSING 51.00 - 52.00 CANNER AND LOW CUTTER 1-2 38.00 - 45.00 SLAUGHTER BULLS 10 HEAD BULLS Y.G. 1-2, 1300-1600 LB. 56.00 - 62.00 Y.G. 1-2, 1600 LBS. & OVER 58.00 - 63.00 SLAUGHTER CALVES & VEALERS 12 HEAD CALVES GOOD AND CHOICE, 250-500 LB. 78.00 - 83.00

FEEDER CATTLE 320 HEAD STEERS MED&LGE 1 200-300 98.00-105.00 300-400 95.00-103.00 400-500 93.00-103.00 500-600 85.00-93.00 600-700 78.00- 88.00 700-800 78.00- 85.00

HOLSTEIN STEER MED & LARGE 2 300- 500 75.00

HEIFERS MEDIUM 1 LARGE 1 300-400 80.00- 85.00 80.00- 85.00 400-500 78.00- 82.00 82.00- 85.00 500-600 75.00- 79.00 78.00- 81.00 600-700 70.00- 74.00 72.00- 75.00

BULLS MED&LGE 1 200-300 95.00-103.00 300-400 90.00- 96.00 400-500 84.00- 89.00 500-600 75.00-81.00 600-700 65.00- 69.00

(Turn to Page A12)

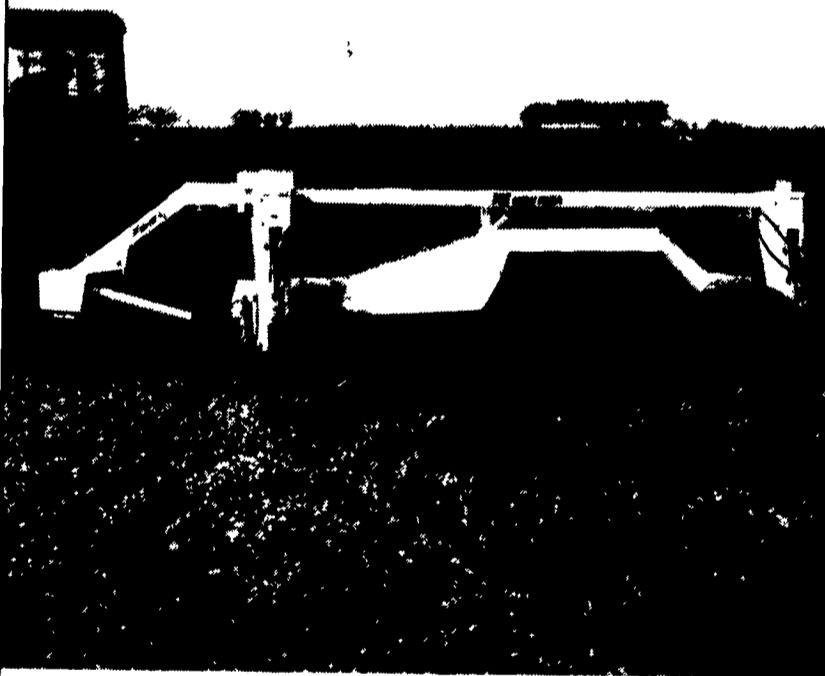
See Your
White-New Idea
Dealer Listed Below.

Cuts more than hay.
Cuts time.

New Jersey
Bridgeton
Leslie G. Fogg Inc.
Columbus
Reed Brothers
Equipment
Shiloh
Farm Rite Inc.

Pennsylvania
Airville
Farmers Equip. &
Supply Co. Inc.
Bechtelsville
Miller Equip. Co.
Bethel
Zimmerman Farm
Service
Bloomsburg
William F. Welliver
Chambersburg
Chambersburg Farm
Service Inc.
Cochranville
Stoltzfus Farm
Service Inc.
Dover
George N Gross Inc.
Everett
Sollenbergers
Equipment Inc.
Gettysburg
Yingling's
Implement Inc.
Honesdale
Marshall Machinery
Klingerstown
Stanleys Farm
Service
Lebanon
Umbergers Of
Fontana
Mahaffey
Hutton Farm
Equipment

Mercer
Ralph W Kyle Inc.
Oakland Mills
Peoples Sales &
Service Inc.
Quakertown
C. J. Wonsidler Bros.
Quarryville
A.L. Herr & Brother
Somerset
Lincoln Supply &
Equipment Co.
Tunkhannock
Ace Jurista Inc.



New Idea 5212 Disc Mower Conditioners cut a big 11'9" swath and condition with 9'6" intermeshing rolls. It's a wider version of our well-known 5209. With it, you cut and condition lots of hay...every trip. And that means you cut time.

Because the New Idea modular disc cutterbar design makes routine maintenance simple and, although unlikely,

repairs a breeze; there's less downtime, too.

Best of all, you'll find our disc mower conditioners are just one segment of our hay equipment line.

Others include round balers, disc mowers, sickle mowers and mower conditioners, rakes and hay handling equipment.



ag ONE
THE ONE FOR PARTS

Free Twine
with every Baler
Purchased

NEW IDEA
BY WHITE-NEW IDEA

Replace Your Bulbs- Save Electricity FLUORESCENT LIGHTS

PRICES AS
LOW AS
~~\$6.99~~

NOW
\$5.95



- Save Energy Replaces up to 75 watt incandescent
- Easy Installation
- Economical Lasts 10 times longer than standard bulb
- Fewer Lamp Changes
- Lower Maintenance Cost
- Durable Polycarbonate Housing
- 45 000+ Hour Ballast
- 10 000+ Hour Lamp Life
- Air Cooled
- Water Resistant Ballast
- 120 Volt
- Ratcheted Brass Socket
- Medium Base
- Starting Temperatures 0
- Made in USA

MODEL	WATTS	INCANDESCENT EQUIVALENT	INITIAL LUMENS
3000	5	25 WATTS	250
3200	7	40 WATTS	400
3500	9	60 WATTS	600
3700	13	75 WATTS	900
3900	22	90 WATTS	1300

Call Toll Free 1-800-673-2580

SOLD AND SERVICED BY:

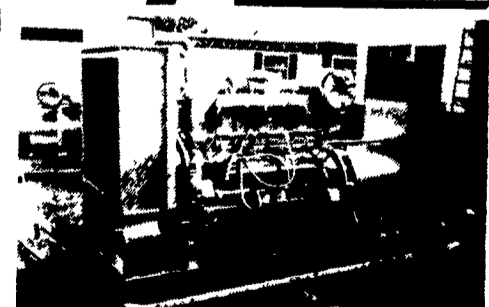


Northeast Agri Systems, Inc.

FLYWAY BUSINESS PARK
139 A West Airport Rd
Lititz, PA 17543
(717) 569-2702



MARTIN MACHINERY



GENERATORS

Sales ★ Service ★ Rentals
★ Complete Generator Systems
★ PTO ★ Portables ★ 2-1600 KW
"We Service It If You Have It
And Sell It If You Need It"

34 W. Mohler Church Rd.
Ephrata, PA 17522

Tel: 717-738-0300
Fax: 717-738-4329