

Farm Women Societies

Lancaster Society 18

Mildred Greider was hostess to Farm Women Society #18 at Salem United Church of Christ, Marietta Avenue, on Saturday, March 20; twenty-two persons attended.

Elizabeth Diem had devotions. Roll call was answered by members stating the earliest date they had planted a garden.

Mary Beth Lake, missionary and teacher, had an informative program showing slides and telling

about the people of the Philippine Islands, when she and her husband were at Silliman University.

Due to inclement weather the sewing at Lancaster General Hospital was cancelled, another date will be arranged.

On April 17, Society 18 will entertain Society #1 to a luncheon at 12:30 p.m. at Trinity United Church of Christ, 2340 State Street, East Petersburg.

York Society 7

York County Farm Women #7 met at the home of Anna Zinn. Edna Brothers served as co-hostess.

Roll call was an exchange of St. Patrick Card readings with 14 present.

Trooper Tim Good of the Penna. State Police presented a safety program on crime prevention tips

for senior citizens and how to be award of telephone and door to door con artists.

A bus trip is planned on April 28 to the Rainbow Dinner Theatre.

The next meeting will be at the home of Helen Bentz on April 14, at 7 p.m. Each person should bring a decorated Easter Egg.

Lancaster Society 26

Lancaster Society #26 met on March 25 at the home of Janet Buchen in Manheim. Vice President Lois Brubaker conducted the meeting. The program for the evening was by Kay Beamesderfer, who spoke on the inner and

outer beauty of woman.

The group will be entertained by Society #8 on April 14.

The next meeting will be held on April 22, at the home of Helma Mumma.

Lancaster Society 19

The Lancaster Co. Farm Women's Society #19 met at the home of Mildred Hoffman April 3.

President Betty Saylor called the meeting to order. Devotions were led by Esther Landis reading Matthew 28:1-10 and poems by Helen Steiner Rice, followed by prayer.

Members answered the roll call by relating "a humorous incident about a child relative." Reserva-

tions were taken for the Spring Rally to be held at Hagerstown on May 26.

President Betty Saylor showed pictures and told about her trip to Israel and Egypt.

The May 8 meeting will be a trip to Oberholtzer's Green Houses and Abner Zook's display of 3-D carvings with lunch at Brickers. Meet at 10 a.m. at Lititz Church of the Brethren.

Berks Society 3

Group #3 of the Berks County Society of Farm Women held its March meeting at the home of Leona Stauffer, Indian Lane, Boyertown. Eleven members responded to the roll call question, "What is your favorite dessert?" Donations were made to the March of Dimes, Boyertown Multi-Service, and the Boyertown Safety Patrol.

Group #3 will serve refreshments at a farm equipment auction on April 6. Members will assist at a bingo party at Berks Heim on April 8. Group #3 received an

invitation to the 25th anniversary part of Group #8 at the Shartlesville Grange on April 30. On Saturday, May 15, members of Group #3 will attend the quilt show at the Berks County Historical Society.

Prior to the business meeting, Chief Darius Puff gave a slide presentation on his recent visit to Bogodukhov.

The next meeting will be at the home of Mary Bartholomew, Boyertown R.D. 7. A Pampered Chef demonstration will be the program for the evening.

Berks Society 1

The Berks County Society of Farm Women Group 1 met at the home of Esther Berndt for their March meeting. President Ruth Walters presided at the business meeting with 16 members present.

A series of bingo games was the feature of the social part of the meeting.

The next meeting will feature a speaker and will be held at the home of Pauline Hartman, Oley.

Lancaster Society 20

On Thursday, April 1, Farm Women Society #20 entertained Societies #3 and #15 at a covered dish dinner at the Memorial United Methodist Church, Quarryville.

For the program Jay Evans, the confectioner of Willow Street, explained how the candy is made. There are three kinds of chocolate and they make so many different designs, that they have about 300 molds. They make about 3,000 pounds of chocolate a year.

For the scripture, Vera Herr read Hebrews 11 and had readings from a Lenten Booklet. Following the prayer and Pledge of Allegiance to the Flag, the response to the Roll Call was naming a flower beginning with the initial of your last name. On June 5 there will be a garage sale at the home of Nancy Axe of Strasburg and on June 17 Society #20 will be entertained by Society #15. The meeting closed by singing "Brighten the Corner." On May 6 Society #20 will be touring the Lancaster County Winery.



NEW FROM MASSEY FERGUSON

OUR COMPACTS WILL MAKE A BIG IMPRESSION ON YOU!



MF 1125

• 25 Engine horsepower
• 22.5 PTO horsepower
• 2 wheel drive or 4 wheel drive

MF 1140/1145

• 30 Engine H.P. • 31 PTO H.P.
• 26.2 PTO H.P. • 31 PTO H.P.
• 2 WD or 4WD • 4WD only

MF 1160

• 41 Engine H.P.
• 37 PTO H.P.
• 4 Wheel drive only

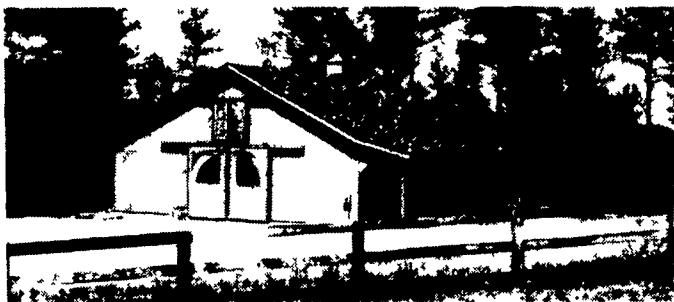
STANDARD FEATURES

• Choice of agricultural or turf tires • 16 Speed synchro shuttle transmission • Tilt steering • Open flat deck • Independent PTO • In your manufacturer's country

MORTON BUILDINGS

Since 1903

- Horse Barns
- Riding Arenas
- Garages
- Warehouses
- Offices
- Shops
- Equipment Storage
- Aircraft Hangars



MORTON BUILDINGS, INC.

Excellence — Since 1903

CONTACT:

3368 York Rd.
Gettysburg,
PA 17325
717/624-3331

P.O. Box 126,
Phillipsburg,
NJ 08865
908/454-7900

Call or write today for more information

1-800-447-7436

In NJ only, call 1-800-426-6686

ARNETT'S GARAGE
Rt. 8 Box 125
Hagerstown, MD 21740
(301) 733-0515

LAWN CARE OF PA
Martindale, PA 17549
(215) 445-4541

PEOPLE'S SALES & SERVICE
Oakland Mills, PA 17076
(717) 463-2735

SCHREFFLER EQUIPMENT
Pitman, PA 17984
(717) 648-1120

CTF SALES & SERVICE, INC.
Comly's Turf Farm, Inc.
Forest Grove Rd.
Wycombe, PA 18980
(215) 598-7157

N.H. FLICKER & SONS, INC.
Maxatawny, PA 19538
(215) 683-7252

TRIPLE H EQUIPMENT
Peach Bottom, PA 17563
(717) 548-3775

LEBANON VALLEY IMPLEMENT CO.
700 E. Linden St.
Richland, PA 17087
(717) 866-7518

R.W. KELLER SALES
Perkasie, PA 19344
(215) 257-0101

M.M. WEAVER & SON
N. Groffdale Rd.
Leola, PA 17540
(717) 656-2321

GUS FARM EQUIPMENT
Seven Valleys, PA 17360-0085
(717) 428-1967

S.G. LEWIS AND SON
West Grove, PA 19390
(215) 869-9440
869-2214

