

MARYLAND DHIA

March 1993

The March 1993 DHI information for Maryland dairy herds is listed by herd name, county association, total number of cows in the herd, and the average production per cow on a 3.5% Fat Corrected Milk (FCM) basis for all milking cows in the herd. The herd must consist of at least 10 cows averaging 65 lbs. or more of 3.5% FCM per cow per day. All of the herds are on official DHI or DHIR test. Also listed are the top 10 herds in Maryland for the Brown Swiss, Guernseys and Jerseys, and the top eight herds for Ayrshires.

ANNE ARUNDEL COUNTY

HERD NAME	HERD BREED	COWS IN HERD T	MLK AVG FCM T
US Naval Academy Dairy	H	169	69.6
Dairy Cattle Research	H	155	66.1

BALTIMORE COUNTY

HERD NAME	HERD BREED	COWS IN HERD T	MLK AVG FCM T
Armacost Farms Inc.	H	107	70.1
Nash Farms	H	130	66.5
Robert E. Prigel	H	78	66.1
Lindsay & Steve Wilson	H	148	65.2

CAROLINE COUNTY

HERD NAME	HERD BREED	COWS IN HERD T	MLK AVG FCM T
Harmony Farm	H	150	77.6
Hollingsworth Daniel 3	H	54	71.4
Grubby Neck Farm	H	70	70.3
Paul Satterfield, Jr.	H	153	69.6
Richard Edwards	H	165	68.5

CARROLL COUNTY

HERD NAME	HERD BREED	COWS IN HERD T	MLK AVG FCM T
James & John Myers	H	61	76.7
Garstlyn Holsteins	H	61	75.2
Marlin Hoff	H	345	74.2
Mike & Anita Haines	H	60	73.4
Md.-Carrollton	H	53	73.1
Derrwyn Holsteins	H	67	72.5
Windsor Manor	H	70	70.8
Unicorn Associates Inc	H	141	70.6
Ash & Bear	H	73	68.1
Carl & Todd Weant	H	86	67.8
Steven R. Ruby	H	90	67.6
D. Richard Flickinger	H	85	67.4
Thomas H. Muller	H	70	67.3
Rinehart, John W.	H	55	67.1
Panora Acres Inc.	H	138	66.9
Jr. - Lees Farm	H	101	66.1

Dale M & Susan Smith	H	96	66.0
James A. Carmack	H	171	65.4
David M Reifsnider	H	27	65.4
Jerry & Rick Lease	H	93	65.1
Maple Lawn Farm Inc	H	175	65.1
Cedar Knoll Farms	H	67	65.1

CECIL COUNTY

HERD NAME	HERD BREED	COWS IN HERD T	MLK AVG FCM T
Tom And Joy Crothers	H	54	85.2
Tom And Joy Crothers	BrS	13	82.5
Long Green Farms Inc.	H	117	72.4
Albeck Farms Inc.	H	156	71.3
Goods Dairy Farm	H	64	71.2
Zion Meadows	H	103	70.4
Kilby Inc.	H	251	67.1
England Farm Inc.	H	43	66.8
Staff-Herd Farm	H	83	66.7
Chara Farm	H	74	65.4

FREDERICK COUNTY

HERD NAME	HERD BREED	COWS IN HERD T	MLK AVG FCM T
Savage-Leigh Farm	H	151	79.6
Hottels Dist Springs Farm	H	113	79.3
Dave & Carole Doody	H	118	78.7
Da-Bren Farm	H	138	76.7
Taylor Made Farm	H	33	75.5
Dublin Hills Swiss	BrS	21	74.9
Fir - Thome - B	BrS	14	74.8
Zimmandale Farm	H	57	74.8
K Scott Hood	H	52	74.7
Holterholm Farms	H	95	74.5
Wilcom, Donald L.	H	150	73.2
Paul & Karen Dotterer	H	83	72.2
Wayne Z Tucker	H	128	71.9
Smith-Mead Farm	H	177	71.7
Fir-Thome	H	21	70.9
David Toms	H	189	70.6
Thomas D. Remsberg	H	83	70.5
Harold Long	H	106	70.2
Gary & Judith Remsberg	H	83	69.1
Enfield Farm	H	107	69.0
Paul M Inskeep	H	54	68.7
Spring-Vale Holsteins	H	58	68.5
Donald L. Wachter	H	70	68.3
Eric F-Faith M Burall	H	96	68.1
Dublin Hills Farm	H	41	68.1
Warner Bros Inc	H	146	68.0
Jerry Murphy	H	64	68.0
Clovertop Farm, Inc.	H	90	67.5
Leigh Castle Holsteins	H	127	67.3
Len-Land Acres	H	242	67.2
Gary L & Mary C Snyder	H	49	67.1
Howard A & Ruth Pearl	H	31	66.7
Jeff And Judy England	H	149	66.7
Md-Garden Spot Farm	H	89	66.4
Allen Brothers	H	107	66.0
Plain Four Farms	H	115	65.7
Paul K. Coblentz & Sons	H	172	65.6
John C. Trout	H	77	65.2
Hobble-Hill Holsteins	H	83	65.2

GARRETT COUNTY

HERD NAME	HERD BREED	COWS IN HERD T	MLK AVG FCM T
Philip Beachy	H	50	86.0
Paul & Henry Kinsinger	H	73	74.1
Wayne E. Schrock	H	45	73.1
Ernest & Dan Ganoe	H	123	71.8
Fred Petersheim	H	45	71.6
Covewind-Hill Holstein	H	29	71.0
Maple Valley Farms	H	30	69.6
Bender, Carl	H	74	69.4
Jerry L. Yoder	H	64	69.4
Oakview Ridge No. 2	H	46	68.0
Jonas D. Kinsinger	H	23	67.6
Cleland Beitzel	H	56	66.3
Mar-K Farms	H	51	65.9
Andrew W. Schrock	H	51	65.8
Paul & Naomi Petersheim	J	38	65.4
Paul Yoder	H	50	65.0

HARFORD COUNTY

HERD NAME	HERD BREED	COWS IN HERD T	MLK AVG FCM T
Highland Heights Farm Inc	H	132	81.5
Strawberry Hill Farm	H	122	75.2
Maroamo Farm	H	105	72.5
Homelands Farm	H	47	72.3
My-Ladys-Manor Farm	H	231	70.4
David M. Keyes	H	87	67.4
Harkins Hill Farm	H	137	67.3
JD & GE Miller	H	58	67.0
Hawks Hill Farm	H	84	65.9
Charles T. Edwards	H	88	65.6
Franklin Harkins	H	81	65.5
A G Hopkins	H	73	65.3

HOWARD COUNTY

HERD NAME	HERD BREED	COWS IN HERD T	MLK AVG FCM T
David & James Patrick	H	137	74.5
L-Meadow Farm	H	61	66.2
Merry Acres Farm	H	38	65.6

KENT COUNTY

HERD NAME	HERD BREED	COWS IN HERD T	MLK AVG FCM T
Roy W Crow	H	49	83.4
Gen Farm I	H	742	76.2
P. Thomas Mason	H	38	74.6
Fair Hill Farm Inc.	H	238	73.6
R & E Brink	H	69	73.4
John & Kellie Cahall	H	46	71.2
Jonas & Ruth Stoltzfus	H	66	70.4
Brick House Fm Inc	H	90	70.3
Wintacres	H	56	68.3
Michael H Philipp	H	70	68.3
Howard McHenry	H	202	67.1
Greenwood Acres	H	75	66.7
Wm & Kathleen Schrodel#2	H	118	66.0
John Z. Stoltzfus	H	74	65.7
Friendship Farms, Inc.	H	100	65.7

MARVA ASSOCIATION

HERD NAME	HERD BREED	COWS IN HERD T	MLK AVG FCM T
Glad-Mar Farm Inc	H	181	69.2

(Turn to Page A37)

Only From NC+



The New Standard

JADE™ was the top performing alfalfa variety in the 1988 and 1989 Iowa State yield trials. These outstanding advantages will make it a winner for you, too.

- HIGH YIELDS - 17% better than Perry, 24% better than Saranac, 40% better than Vernal.
- SUPERIOR QUALITY - High leaf-to-stem ratio and fast recovery after cutting.
- RESISTANT to major alfalfa disease problems.
- WIDELY ADAPTED to varying soils and conditions.

\$165.00 For 50 Lbs.

* Available With Rhino Coating For Better Emergence And Seeding Survival \$160.00 For 50 Lbs.

JADE deserves a place in your forage program

"NC + VERTA + An Economical Choice \$128.00 For Long Alfalfa Rotations With High Yields & Quality"

• ALSO AVAILABLE: NC+ Rough Rider Alfalfa - \$110 For 50 Lbs.



America's down to earth seed company

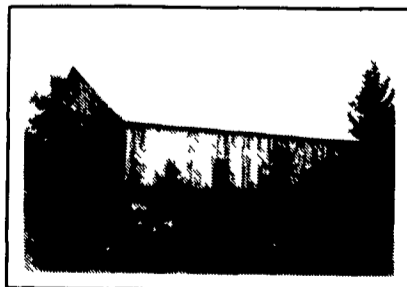
For More Information Contact:

- District Manager, Rod Dodds 717-436-5514
- Territory Sales Manager, Elvin Hursh 717-733-3538
- Territory Sales Manager, Samuel E. Knouse 717-463-2885
 - Arthur Auker 717-665-6627
 - John Auker 717-933-5224
- Wayne R. Litzberger 215-847-5563
 - Clarence Mull 717-865-2037
 - Robert Rineer 717-284-4658
 - Aaron Stoltzfus 315-536-4946

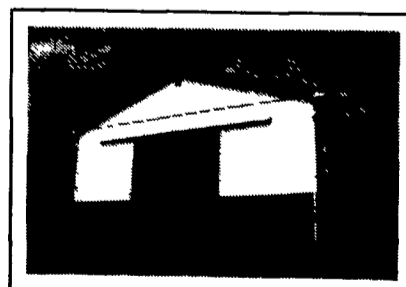


DESIGN • BUILD • CONTRACTORS

337 Panorama Dr. Denver, PA 17517



MORTISE & TENON
*NEW & RESTORATION



AGRICULTURAL
*EQUIPMENT STORAGE
*DAIRY & LIVESTOCK CONFINEMENT



EQUESTRIAN
*RIDING ARENAS
*STABLES, ETC.

FROM DESIGN TO COMPLETION, OUR GOAL IS CUSTOMER SATISFACTION. WE OBTAIN THAT BY QUALITY CONSTRUCTION WITH COMPETITIVE PRICES. CALL FOR MORE INFORMATION

(215) 445-7897