

# Infinity-Integrated Management Systems For The Dairy Industry

Infinity is a repackaging of our services with a brand name that is not specific to geography. It doesn't convey that this is just for Pennsylvania. It conveys that this is an organization operating across lines for many people's benefit. INFINITY is the way things will go in the future: more service, more choice, more flexibility, more variety.

INFINITY is a system of 10 information service modules. Each Module is independent of the other, and the modules are integrated through the system so that information can be traced between modules as it is needed.

Each module has a specific application to DHIA needs. For example, the Dairy Management System is a traditional paper-based dairy herd management service providing the entire range of official and unofficial records services for dairy producers. As another example, the Laboratory Control System is a PC-based system that controls infra-red milk analysis machines, stores the out-

put of individual tests and integrates it with other systems and provides management information for lab management personnel.

The power of INFINITY comes from the unique integration of the individual service modules which permits information in one module to be shared with other modules. While some modules rely on input of data from other modules, the overall design allows a DHIA or dairy producer to select only those modules needed. Systems Overview of the 10 modules is as follows:

1. Dairy Management System-Package Reports for herd and cow mgt.
2. On-Farm system-Dairy Comp 305 and Dairy Plan
3. On-Farm System Plus Genetic Evaluations and Young Sire Programs
4. Field Services System
5. Data Entry System
6. Laboratory Control System
7. Extension and Education Service
- \* Database access through ARIS

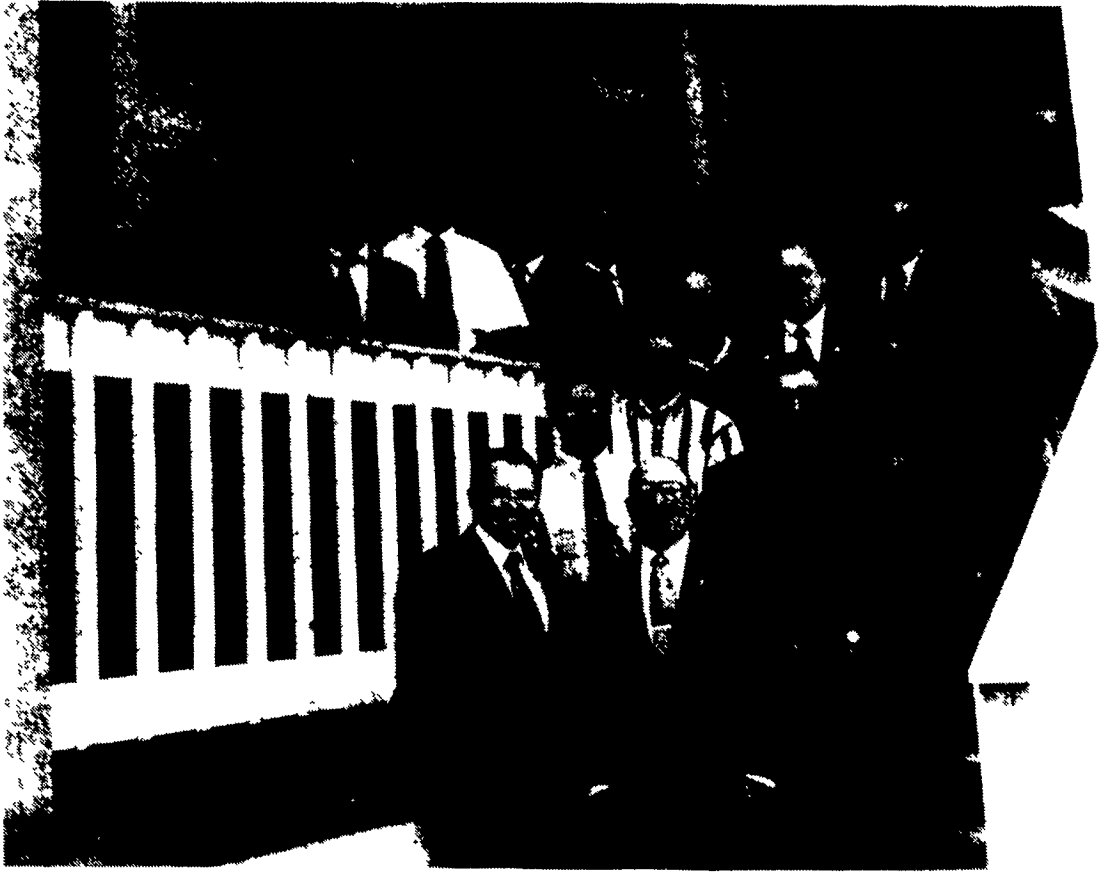
- \* Statistical Analysis of data-base information
- \* Custom report generation with TIF
- \* Standardized monthly and year-end reports
- \* Training manual with videos
- 8. Consultant's Service
- 9. Communication System
- 10. Finance Personnel Services

## FOCUS

*Pennsylvania Dairy Herd Improvement Association*

*Pennsylvania DHIA news is presented in FOCUS each week in cooperation with Dixie L. Burris, manager of membership development.*

*For more information about these news items or the services of DHIA call 1-800-DHI-TEST. The call is free.*



The 1993 directors of Pennsylvania DHIA in the photo taken at the headquarters in State College are, from left at bottom: Frank Orner, Rockton, president; John Castrogiovanni, Montrose; Neal McCulloch, Newville; Dennis Daubert, Pine Grove; Ralph Gilkinson, Wattsburg; George Cudoc, Valencia; Lane Sollenberger, Fayetteville; Norman Hershery, Gordonville, treasurer; Dale Hoover, Lebanon; John Wilcox, Troy, and Steve Mowery, Roaring Springs. Above: Brooks Smith, Newport; Andy Meier, Friedens; Joseph Lyons, Millville, secretary; and William Jackson, New Salem, vice president. Missing from the photo are: John Brodzina, Tyrone; Donald Duncan, Robersonia, and Robert Kindig, Conestoga.

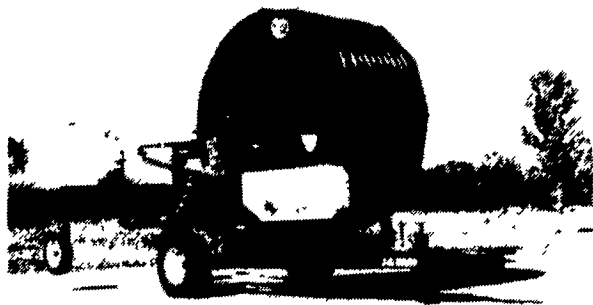
## Average Farm Feed Costs For Reference

To help farmers across the state to have handy reference of commodity input costs in their feeding operations for DHIA record sheets or to develop livestock feed cost data, here's this week's average costs of various ingredients as compiled from regional reports across the state of Pennsylvania. Remember these are averages so you will need to adjust your figures up or down according to your location and the quality of your crop.

- Wheat, No. 2 - 3.34 BU. 5.58 CWT.
- Barley, No. 3 - 1.92 BU. 4.10 CWT.
- Oats, No. 2 - 1.64 BU. 5.10 CWT.
- Soybeans, No. 1 - 5.63 BU. 9.39 CWT.
- Ear Corn - 64.47 TON 3.22 CWT.
- Alfalfa Hay - 107.00 TON 5.35 CWT.
- Mixed Hay - 93.75 TON 4.65 CWT.
- Timothy Hay - 110.50 TON 5.01 CWT.

**Special Spring Prices On Travelers, Pumps And Pipe**

Made In USA



**Design and Engineering On Underground Mains For Slurry Or Water Application.**

**We have pipe press to manufacture any style and size aluminum pipe you need. All pipe is heavy duty tubing to withstand high pressures. Special prices in effect now. Order now for spring delivery. Prices are FOB Mifflinburg.**

**Reg Hook & Hatch Ends  
125 PSI**

**Tico Style Ends  
150 PSI**

**Circlelock Ends  
200 PSI**

3"x30'	1.40 per ft. = 42.00 section	1.50 per ft. = 45.00 section	1.50 per ft. = 45.00 section
4"x30'	1.95 per ft. = 58.50 section	2.15 per ft. = 64.50 section	2.15 per ft. = 64.50 section
4"x40'	1.85 per ft. = 74.00 section	1.95 per ft. = 78.00 section	1.95 per ft. = 78.00 section
5"x20'	1.85 per ft. = 74.00 section	1.95 per ft. = 78.00 section	1.95 per ft. = 78.00 section
6"x30'	2.85 per ft. = 85.50 section	3.25 per ft. = 97.50 section	3.25 per ft. = 97.50 section
6"x40'	2.70 per ft. = 108.00 section	3.10 per ft. = 124.00 section	3.10 per ft. = 124.00 section

Reconditioned John Deere units with new pumps  
Includes Murphy Safety Switches - A1 condition  
Ready to pump

- 110 HP with new pump 165 psi at 700 GPM-\$6,800
- 135 HP with new pump 165 psi at 1000 GPM-\$7,800
- 80 HP With New Pump - 160 psi at 500 GPM \$5,800

**ZIMMERMAN IRRIGATION INC.**  
RD #3, Mifflinburg, PA 17844  
(717) 966-9700

# Hay! It Mixes Bales.

The new ROTO-MIX IV Series Mixer Feeder with the ROTO-HAY Processor™ (Patent Pending) combines two steps into one by chopping baled hay and other roughages as they are put into the mixer with other feed ingredients. It reduces the costs of grinding by allowing you to process only what you need, thus reducing shrinkage due to wind and spoilage. The ROTO-MIX IV with the ROTO-HAY Processor also gives you the capability to mix small quantities to achieve a consistent blend when using micro



ingredients. All this with the speed and efficiency of the revolutionary ROTO-MIX® mixing system Hay...this is something to get excited about.



Call for a free brochure & video demonstration  
(316) 225-1142

National Sales Headquarters:



2205 E. Wyatt Earp  
Dodge City, Kansas 67801