

**For Sale: Ford TW30**  
w/Cab, 4 WD, 1980 Model Year,  
8200 Hours  
**\$12,500**  
717/865-3602



**Daffin Feed Grinder/Mixer**  
On IH With 4-53 Detroit  
Runs and Operates  
**\$1500 Or Offer**  
(304) 876-6653

**Hex Head Bolts**  
Grades 2, 5 & 8  
Mix or Match - Only \$50.00 per 100 lb.  
(Minimum Purchase \$50.00)  
Various Sizes Available  
Ask For List  
Approx. 30,000 Lb.  
(Lot Price Is Negotiable)  
**PAB'S SUPPLY CO, INC.**  
Rt. 61, PO Box 102,  
Kulpmont, PA 17834  
(717) 373-1514  
Fax (717) 373-1292

**LAGOON PUMP**  
Used - Houle 32'  
Lagoon Pump  
Pumped Less Than  
30 Loads  
Like New  
**\$9,000**  
215-932-5760  
After 6:00 P.M.



Gehl CB 750 Forage Harvester w/2 Heads  
Gehl 99 Blower  
Fox Blower  
Woods RM59 Mower  
MF 52 Disc  
NH 668 LH Tank Spreader  
IH 22' Disc  
NH 315 Bale w/Thrower  
Ford 8700 Tractor w/Cab  
6' PT Rotary Cutter  
MF 1045 4WD w/72" Deck  
NH 315 Baler Thrower  
PT Field Sprayer  
Shaver HD 12 Post Driver  
F/NH Skid Steers  
Ford 8700 Flat Deck  
NH L225 Skid Steer  
NH 679 Manure Spreader

**Coming In:**  
Ford 3000 Gas w/Loader  
Woods C80 Rotary Cutter  
IH Hay Rake  
NH 1499 Haybine  
Gehl CB600 w/2 Heads  
NH 5 **SOLD** ure Spreader  
Gehl 99 Blower  
Lamco Forage Box  
w/Tandem Gear



**SCHREFFLER EQUIPMENT**  
Pitman, PA  
717-648-1120  
717-648-1811

**Special Spring Sale!**

**NICARRY EQUIPMENT, INC.**

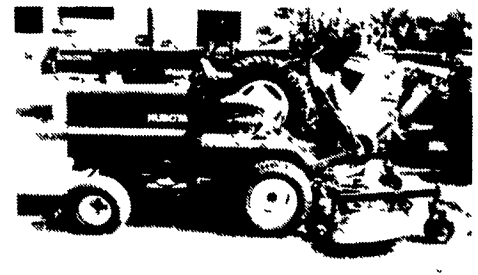
**Special Hours:**  
MON. TO FRI.  
8 to 8  
Sat. 8 to 3



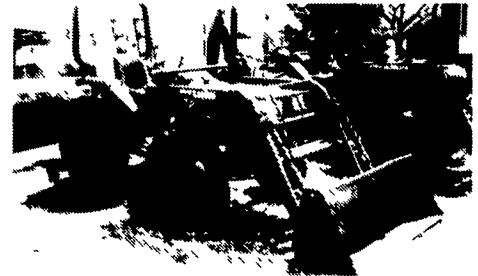
**Kubota F2100 w/VAC System, Only 130 Hrs., Balance Warranty**  
..... Only \$14,500



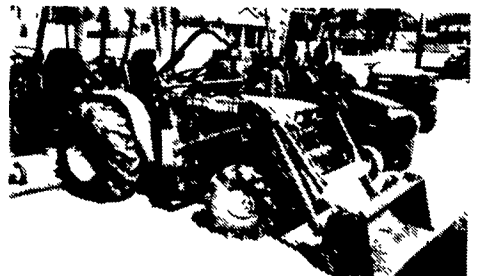
**Kubota F2000, 4x4 w/60" Deck And Snow Blade**..... \$9,275



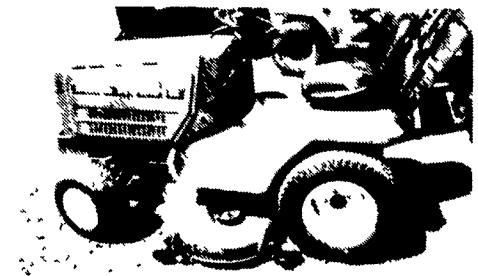
**Kubota F2100, 4x4 w/60" or 72" Mower, Very Nice**..... \$9,500



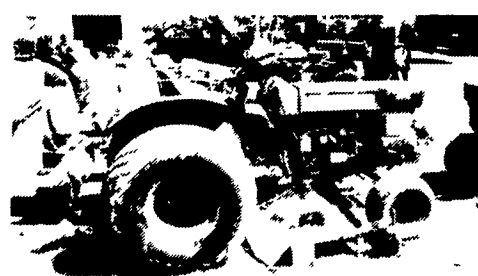
**Kubota L2550, 4x4 w/Loader, Very Clean Tractor**..... \$11,900



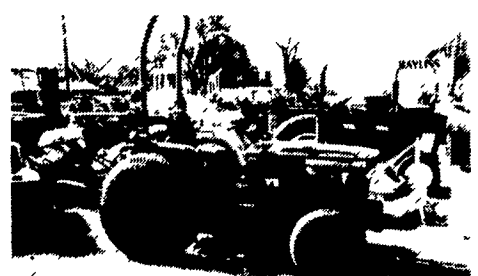
**Kubota B8200, 4x4 Hydro w/New Kubota Loader, Low Hrs**..... \$8,900



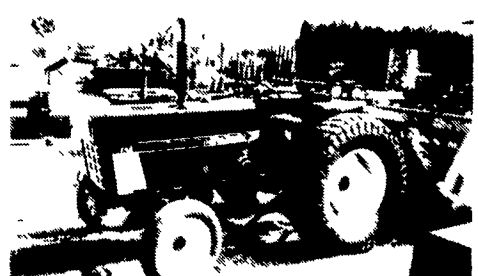
**Kubota G6200 w/48" Mower, Nice Condition**..... Only \$3,500



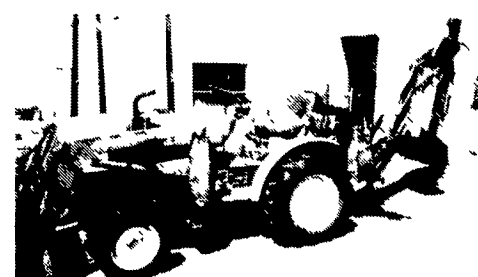
**Kubota L185 w/60" Woods Belly Mower, Very Nice Cond.**..... \$5,200



**Kubota B8200, 4x4 w/New 60" Belly Mower**..... Call!



**IH 284, New Paint, Very Nice Condition**..... \$5,900



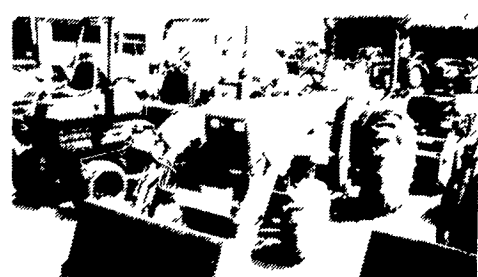
**Ford 1210 4x4 Hydro w/Loader & Backhoe, Needs Some Repair** \$8,900



**Ford 1300 w/Rear Finish Mower, Must See**..... A Cream Puff!



**Klotl 22 HP 4x4 w/Loader, Only 93 Hours**..... Only \$10,500



**JD 750, 4x4 w/Loader, Very Nice**..... 1,300 Hrs.



**JD 1050, 4x4 w/Loader, Only 1300 Hours**..... \$9,800



**Scag 61" 3-Wheeled Mower - Needs Elec. Wiring**..... Mechanics Special, Only \$1,000

**NEW & USED TRACTOR & COMBINE PARTS**

Large Selection Save 50%  
**USED TRACTORS**  
JJD 3020, diesel  
JD A, WFE  
AC D15, motor stuck, w/loader \$2000 as is  
JD 1010, gas, stuck, w/1 R cult \$1750 as is  
JD 730 diesel \$3500  
JD 630, WFE  
Case 530 TLB, Gas, Needs Clutch \$2,500 as is  
MF 235 Diesel \$6,750  
MF 135 gas, \$4,750  
MF 35 gas, \$3,250  
IH 404 gas w/loader \$4,750  
AC 5040 diesel \$3,995  
Case 580B T.L.B. \$6,950 Sale \$5,000 As is  
AC G \$1,200  
Oliver HG3 Crawler loader, nice, \$4,000  
MF 50 diesel \$2,750  
Model 353 Detroit Diesel Irrigation Motor w/Hand Clutch \$2,995  
MF 255 Diesel, 1979 1600 Hrs. w/MF 236 Loader \$9,500  
JD 400 TLB, gas, as is \$2,500  
MF 255D  
JD 2840

**W.C. Littleton & Son Inc.**  
Laurel, DE 19956  
1-800-842-7445

Several Used Ag Tech Preseeders And Harley Rock Rakes — Ready For Spring!  
• Financing And Leasing Available

**Kubota.**  
Full Service, Parts And Rental

**NICARRY EQUIPMENT INC.**  
RD #2, Box 2008, Reading, Pa. 19605  
215-926-2441  
Location: 1 Mile North of Reading On Rt. 61  
3 Miles South of Leesport  
Reg. Hours: Mon. thru Fri. 8 to 5; Sat. 8 to 3