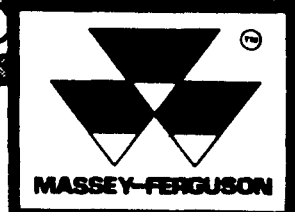


SINCE 1936

M.M. WEAVER & SONS, INC.



Leola, PA 17540 Phone: (717) 656-2321

Located: 4 miles West of New Holland on Rt. 23, 1 1/2 miles Northeast of Leola on the No. Groffdale Rd., 1 mile on the right, opposite Groffdale Mennonite Church.

LATE MODEL MF USED COMBINES

1986 MF 860 With 9115 Floating Grain Head & 1163 Corn Head, 2400 Hrs.	\$52,000
1983 MF 860 With 9115 Floating Grain Head & MF 1163 Corn Head, 2800 Hrs.	\$32,000
1982 MF 860 With 9115 Floating Grain Head & MF 1163 Corn Head, 2860 Hrs.	\$34,000
1982 MF 850 With 9113 Floating Grain Head & MF 1163 Corn Head, 4680 Hrs.	\$25,000

USED TRACTORS

JD 2440 60 HP, With Loader.	\$10,500
MF 3660-4, 140 HP, 814 Hrs.	\$52,000
MF 3525-2, 110 HP, 2882 Hrs.	\$18,500
MF 2745-2, 143 HP, 2583 Hrs.	\$12,000
MF 374-4 With Loader, 57 HP, 735 Hrs.	\$21,000
MF 1085, 82 HP, 3568 Hrs.	\$8,500
MF 1085, 82 HP, 3980 Hrs.	\$7,500
MF 1080, 82 HP, 5516 Hrs.	\$5,000
MF 285, 82 HP, 6160 Hrs.	\$8,000
MF 1020-4, 21 HP, 224 Hrs.	\$5,500
MF 1030-2, 26 HP, 232 Hrs.	\$6,700
MF 1030-4, 26 HP, 531 Hrs.	\$8,000
MF 1035-2, 31 HP, 185 Hrs.	\$7,800
MF 1045-2, 35 HP, 262 Hrs.	\$7,900
MF 40 With Loader, 3170 Hrs.	\$4,700
MF 30 With Loader, 668 Hrs.	\$19,500
MF Loader Backhoe, 2956 Hrs.	\$8,500
MF 35 With Loader.	\$4,500
IH 706 w/Cab. SOLD	\$5,500
MF 135 Diesel, 3540 Hrs.	\$4,800
MF 1020-4 w/Loader.	\$9,500

Who makes the most practical tractors?

Last year, more value-minded farmers picked Massey-Ferguson than any other make.

In fact, one of every five tractors now sold in the Western World is an M-F. Which makes Massey-Ferguson the Western World's largest tractor manufacturer.

One of the big reasons for this popularity is the great value of the 50-90 PTO hp line of M-F 300 Series tractors.

They all give you the torque, economy and reliability of world-famous Perkins diesel engines and all the advantages of advanced Ferguson system hydraulics. Plus you get the practical features you want, like hydrostatic steering as standard equipment.

Massey-Ferguson engineers put a lot of time and effort into designing these tractors to save more of your time and effort. They're incredibly easy to operate and maintain. And they have one of the best reliability records of any tractor ever made.

We'd like to show you why an M-F 300 Series tractor can be the best value for your hard-earned investment.



Practical choices.

MODEL	M-F 362	M-F 375	M-F 383	M-F 390	M-F 390T	M-F 399
HP*	55	60	73	70	80	95

* Manufacturer's rated PTO horsepower. All models available with 2 or 4-wheel drive. Some can be equipped for Wide Row Crop or Low Profile applications.

THE ONE TO SEE

New QUADRAM 1000 Series Engines Now In MF 399. Side Console Shuttle Shift Available In Cab Models!



DEMCO 500 GAL. TANDEM SPRAYER \$4500
45' Boom - Hydraulic Drive - Centrifugal Pump - Foam Marker 3 Yrs. Old **Firm**

THE CLAAS HARVESTER

MAXIMUM FEED QUALITY

To ensure maximum feed quality from maize it is vital to crack every kernel. Digestion of uncracked maize falls as the maize becomes drier. Independent trials have shown the Claas corn cracker to be close to 100% effective. From the cylinder the corn passes through the two large diameter rollers with saw tooth profiles. The rollers run at different speeds to intensify the grinding effect and open up each kernel. It is a fairly tough process so the latest generation of corn crackers take account of the wear involved on the rollers. Nothing can reduce the wear but Claas have cut the cost of repair by making the outer sleeve replaceable. The shaft, drive pulley and bearings can all be reused which cuts down repair bills dramatically. Adjusting the distance between the two rollers is accomplished by turning two handles, easily accessible behind the cab. In no time at all the degree of cracking can be matched to the ripeness of the crop.

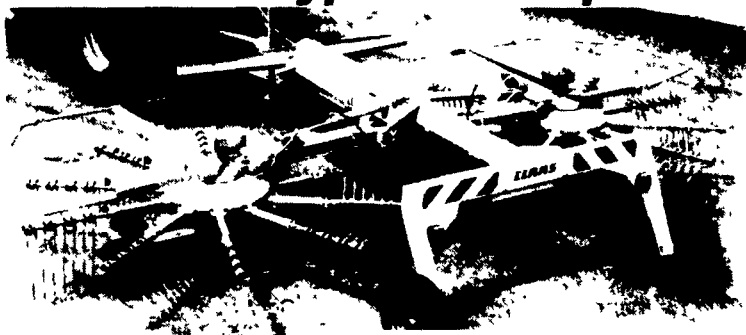


RELIABILITY

The CLAAS Cutterbox is a unique balanced design using 2 knives in a V configuration. This forces the cutting action toward the center instead of the outside. This is the secret of their horsepower requirement and good quality of cut.

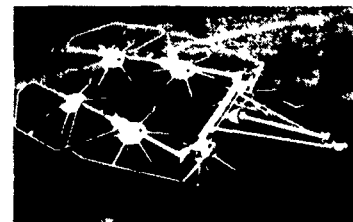


Efficient preparation system for all types of crops



WIDE, UNIFORM SWATHS
Tines on twin rotors sweep crop into center windrow to promote easy baling. Hydraulic wings lift for travel, storage.

Discover CLAAS
THE HARVESTING SPECIALIST



FAST DRYING
Tedders spread cut crop for even drying in half the time.

HAY EQUIPMENT

Demo MF 228 Baler With Thrower.	\$11,000
Demo Vicon 1511E 5x6 Round Baler.	\$9,900
Demo MF 5 Big Square Baler.	\$36,000
Used Vicon 1211 E 4x5 Round Baler.	\$6,500
Demo Vicon 321 Disc Mower Conditioner.	\$12,500
Demo Vicon 216 7 Ft. Disc Mower.	\$3,900
Lucknow Tub Grnder.	\$5,900
Teagle Bale Shredder.	\$1,900
Vicon RS740 Tedder 24 Ft.	\$4,500
Pequea Hay Tedder.	\$1,330
6 Like New 8x24 Ft. Flat Wagons.	@ \$1,200
NH 851 Round Baler.	\$4,250

PLOWS & TILLAGE

Glenco 7 Tooth Soil Saver.	\$5,900
M&W 5 Tooth V-Ripper.	\$5,700
Vicon 18 Ft. Field Cultivator.	\$6,900
IH 5-16 Spring Trip Semi Mtd. Plow.	\$950
Oliver 10 Ft. Transport Disc Harrow.	\$1,100
MF 2-16 Spring Trip 3 Pt. Plow.	\$650
Dunham 14 Ft. Cultipacker.	\$1,875
Yetter 3 Pt. Rotary Hoe.	\$2,895
Buffalo 6 Row Cultivator-Ridge-Till.	\$7,900
Pequea 6 Row Cultivator.	\$2,100

MANURE & FEED MIXER EQUIPMENT

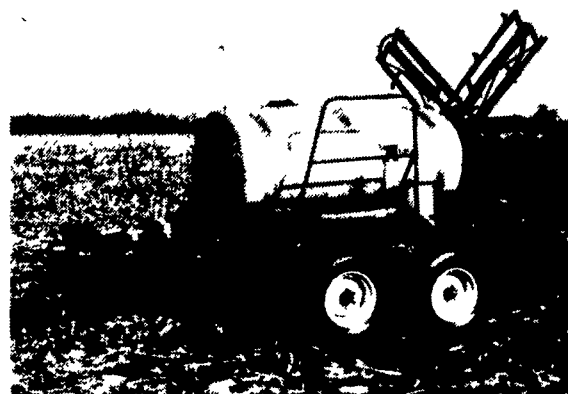
New Better-Bilt 2500 gal. Vacuum Manure Spreader.	\$9,500
NH 791 Tandem Axle Manure Spreader.	\$2,400
S.F.M. 1100 Gal. Slinger Manure Spreader.	\$4,900
Knight Mixer Feeder With Scales.	\$4,500

ROTARY CUTTERS & EQUIPMENT

Wood HD 315 Hydraulic 15 Ft. Bat Wing Mower.	\$7,500
Woods 214 Fold Wing 14 Ft. Mower.	\$5,200
Hinckley Brady 12 Ft. 1000 RPM Shredder.	\$5,500
Woods 60 HP Rated 8 Ft. 3 Pt. Blade.	\$650
Low Cost 7 Ft. 3 Pt. Blade.	\$305
Sweepster 3 Pt. 6 Ft. Rotary Broom.	\$700
Myers Front Tractor Mtd. Snow Blade.	\$1,250
Brady 7 Ft. Flail Chopper.	\$2,500
Danuser 3 Pt. Post Hole Digger.	\$880
Shaver 3 Pt. Hydraulic Post Drive.	\$2,500
Brady 12 Ft. Flail Shredder.	\$5,500



It Takes A Sprayer This Good To Earn A 2 Year Warranty



500 Gallon Tandem Sprayer 45' Hydraulic Fold Boom, Self Levelling Centrifugal Pump, Electric Controls **All For \$7900**