

1 **FARM EQUIPMENT**



**J & L hay-saver feeds 20 cattle.**

New, improved, round hay-bale feeder feeds large or small hay bales along with square bales. It proves to save hay. This feeder is built of heavy 1 1/4" pipe and 1/4" steel for ring. Available with 1/4" steel or treated 3/4" plywood floors. This 1,200 lb. feeder is built to last.

Call for more information.

**J & L Equipment**  
St. Thomas, PA  
(717) 369-2637

**FORRESTER FARM EQUIPMENT LTD.**

1475 Orchard Rd. Chambersburg, PA 17201

Phone: 717-263-0705  
Sales - Parts - Service

**BEST BUYS IN USED TRACTORS**

- Ford 9N
- Ford 8N
- Ford 600, 5 Spd.
- Ford 800 w/PS
- Ford 4000, 1964 Diesel
- Ford 4500 Backhoe
- Ford 5000
- Ford 5000 Row Crop
- Ford 5640, 4WD, 12x12 Trans., 25 Hrs.
- Ford 5640, 2WD, 12x12 Trans., 28 Hrs.
- Ford 5640, 2WD, 8x2 Trans., 10 Hrs.
- Ford 6640, 2WD, 16x4 Trans., 12 Hrs.
- Ford 6640, 4WD, 12x12 Trans., 43 Hrs.
- Ford 7710, 4WD, Cab & Air
- Ford 7740, 4WD, 12x12 Trans., 15 Hrs.
- Ford 8210, 4WD
- Ford TW30, 2WD, Cab & Air
- Kubota 8950, 4WD w/3000 Hrs.
- Mitsubishi 160, 16 H.P. w/Loader
- JD 4430
- Farmall M
- New 6 Row White Cultivator

- NI Spreader
- IHC Grain Drill
- JD 122 Forage Box
- NH 775 Skid Loader w/1,600 Hrs.
- Ford 14' Disc, Like New
- 10' Ford Field Cultivator
- Ford 251 17' Offset Disc
- Ford 4 Btm. Plow
- Ford 3 Btm. Plow
- IH 5 Btm. Plow
- 10' Brillion Culti-mulcher
- Grove 14' Forage Wagon
- NH 495 Haybine, 12' Tongue Haybine
- NH 499 Swing
- NH 315 Square Baler, No Kicker
- JD 24T Baler w/Kicker
- NH 770 Chopper w/Hay Head & 2 Row Corn
- NH 770 Chopper & Grass Head
- NH 791 Spreader
- Case 5 Btm. Plow, 18"
- Oliver 5 Btm. Plow, 16"
- Tye No-Till Drill, 7'
- NH 1499 Haybine, 450 Hrs.

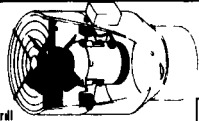
Hours: 8:30-5:00 Mon. Thru Fri.  
8:30-12:00 Saturday

**We've got you covered in plastic!**

**Pit Fan**

- Exhausts pit gases outside facility

Includes:  
Multifan Industrial Motor Poly Housing Grill  
Polypropylene Impeller Plastic Junction Box  
Optional Motor Protection Switch  
Variable, two, & one speed  
All fans listed are 240v

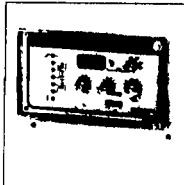
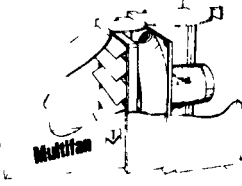


PVC Pipe Diameter	Model #
8"	PF2E30-8
10"	PF2E30-10
12"	PF2E30-12

**Electronic Thermostats and Controllers**

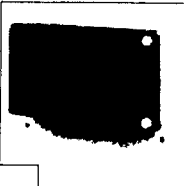
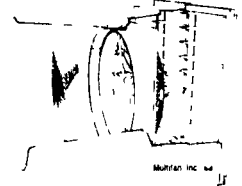
**SYSTEM 1**

Includes:  
Poly Hood Removable Fan  
Removable PVC Shutter,  
Electric plug and 6 wire  
Winter cover  
Variable two & one speed  
All fans listed are 240v  
120v optional on  
PH4E & PH6E Fans



**SYSTEM 2-C**

Same as System 1 except cone replaces hood  
Variable two & one speed  
All fans listed are 240v  
Optional 120v



**Poly Tuff Universal Fan Hoods**

Hoods direct airflow and protect against external wind pressure.

- Durable rotomolded polyethylene
- Low temperature impact strength
- Stress and crack resistant
- UV stabilized
- Non-corrosive



Hood Accommodates Fan Sizes Listed
10" 12 14 16
18 20
22 24 26" 28
36

**Leid Farm Supply**  
201 Gristmill Rd.  
New Holland, PA 17557  
717-355-0441



**NEW TRACTORS & EQUIPMENT**

- Case 1845C Uni-Loader
- Case-IH 595, 2WD
- Case-IH 895, 2WD
- Case-IH 5220, 2WD
- Case-IH 7120, MFD
- Case-IH 4500, VS Field Cult.
- Case-IH 475 12' Disk Har.
- Case-IH 3800, 12' Disc Harrow
- Case-IH 5300 16x7 Drill
- Case-IH 5300 20x6 Drill
- Case-IH 5300 24x6 Drill
- Case-IH 5711 3 Pt. 11' Chisel Plow
- Case-IH 2250 Loader
- Case-IH 860 Hay Rake, Gr. Dr.
- Case-IH 900 4R Planter
- Case-IH 560 Spreader
- Case-IH 1550 Spreader
- Case-IH 600 Blower

**USED TRACTORS & EQUIPMENT**

- Case 1190 (1983, 660 Hrs.).....\$ 8,500
- Long 510S Crawler, Blade, w/ 3PT & PTO (750 Hrs.).....\$ 7,800
- IH W-4 Tractor.....\$ 1,850
- IH F-H Tractor.....\$ 950
- NI 270, 7' Cut/Cond.....\$ 1,250
- IH 35 Hay Rake.....\$ 1,250
- IH 710 5F 16" Plow w/Cyl.....\$ 1,350
- IH 1190 Mower/Cond. (Nice).....\$ 5,350
- Ont. 13x7 SD Drill.....\$ 650
- Gehl FB99 Blower.....\$ 1,250
- NH 30 Forage Blower.....\$ 1,950
- IH 1300 3PT, 9' Mower.....\$ 1,250
- IH 560 5F 16" Plow.....\$ 750

**MIFFLINBURG FARM SUPPLY, INC.**

Route 45 East, Mifflinburg, PA 17844  
Phone: (717) 966-3114  
Evenings - 717-524-2924 - Frank Saner



**MID STATE TIRE CENTER**



**GALAXY**

- 12 4x28 6 ply \$175
- 13 6x28 6 ply .. \$200
- 16 9x28 6 ply \$255
- 18 4x30 8 ply \$305
- 18 4x34 8 ply \$365
- 12 4x38 6 ply \$200
- 13 6x38 6 ply \$225
- 15 5x38 6 ply \$265
- 18 4x38 8 ply \$400
- 20 8x38 8 ply \$495



**FIRESTONE**

- 19Lx16 1 10 ply \$275
- 750x22 \$165
- 13 6x26 6 ply \$235
- 18 4x30 6 ply \$285
- 30 5Lx32 8 ply \$890
- 18 4x34 6 ply \$355
- 20 8x34 8 ply \$545
- 18 4R34 8 ply \$465
- 15 5x38 6 ply \$275
- 20 8x38 8 ply \$539
- 20 8R38 10 ply \$765
- 20 8R42 10 ply \$785



**GOODYEAR**

- 13 6x24 8 ply . . \$290
- 16 9R38 10 ply.....\$375
- 14 9x28 6 ply ... \$195
- 16 9x30 6 ply ... \$265
- 18 4x30 6 ply \$300
- 18 4R38 ... \$490
- 20 8R38 \$685
- 23 1x34 8 ply . . \$690
- 24 5x32 10 ply \$725
- 30 5Lx32 10 ply \$950
- 28Lx26 10 ply \$890
- 18 4x38 8 ply . \$425



**ARMSTRONG**

- 14 9x24 6 ply \$219
- 16 9x24 6 ply \$239
- 18 4x26 90% \$275
- 18 4x34 R/C .. \$495
- 20 8x34 R/C.. \$690
- 14 9x38 6 ply.. \$275
- 18 4x28 6 ply \$350
- (1)24 5x32 12 ply.. \$725
- 30 5Lx32 12 ply \$1,090
- 18 4R34 90%... \$350
- 18 4R38 \$485
- 20 8R38 8 ply \$665
- 20 8R42 \$765



**ALLIANCE**

- 9 5X24.....\$95
- 16 9R30 8 ply.....\$375
- 16 9R34 8 ply ... \$400
- 18 4R34 10 ply....\$425
- 18 4R38 10 ply...\$425
- 20 8R38 10 ply \$625
- Power Mach 23 1x30 ... \$590

**WAGON GEARS**

- 12 Ton.....\$1,290
- 10 Ton.....\$700
- 8 Ton.....\$625
- 6 Ton

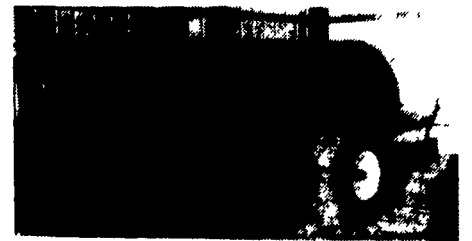


**WE MOUNT TIRES IN N.Y. & PA**  
Duals, Wheels & Rims for:  
Manure Spreaders  
Wagons  
Tractors

Call For Sizes Not Listed

1-800-548-1884 or 315-539-2764

**FOR SALE ORCHARD SPRAYER FMC 707**



\$6,000

717-872-9311  
717-872-5370

**COLLECTOR TRACTORS FOR SALE**



1938 JD D, Unstyled, Running Condition, Fenders, Front Spokes, PTO, Drawbar, Good Tin, Last Year Of The Unstyled.  
\$2,900

- JD B - Cyclone - Running - 1950? ...\$1,100
- JD A - Styled - Good Tin - 1947.....\$1,250
- JD B - Cyclone - Good Tin - 1950?.....\$1,450
- JD 620 - Runs - To Restore - 1957 ..\$1,950
- Oliver 66 w/Wide Front - 1953.....\$2,000
- Oliver OC46 Crawler Loader - As Is \$2,500
- JD G- Single Front- Runs - 1952 .....\$2,500
- JD A - WF - 3 Pt. - Fenders - 1950.\$2,600
- JD Styled D - Runs Good - 1941.....\$2,900
- JD Unstyled D - Runs Good - 1938..\$2,900
- JD R - Not Running - Good Tin - 1954.....\$2,900
- JD B Unstyled - 1938 - Nice.....\$3,400
- MM G705LP- Cab- 1650 Hours.....\$3,450
- JD 440 Crawler Loader (GM Diesel) - 1959?.....\$3,500
- JD 720 Diesel Standard - 1957.....\$3,900
- JD G Unstyled - 1938 - Runs Good.....\$4,500
- JD 720- DE - 1958' - WF.....\$4,700
- JD 730- Standard - 1959.....\$4,700
- JD 60 High Crop- Poor - 1954? .....\$4,800
- JD 530- 3 Pt.- Nicely Redone - 1960\$4,900
- JD 730- LP- WF- 3 Pt.- Fenders - 1960 .....\$4,900
- JD A High Crop- Poor - 1950?.....\$5,500
- JD 320 Utility - 1 Owner - 1957.....\$5,900
- JD 80 Diesel - Runs Good - 1955.....\$5,900
- JD 820 - Runs Good - 1957.....\$5,900
- JD 620 Standard- Nicely Redone - 1957 .....\$5,900
- JD 830 - 1959 - Pony .....\$5,900
- JD 830 - Direct Ele. - 1959 .....\$5,900
- JD 320S- Very Nice Original - 1957 .....\$5,900
- JD 330S - Runs Good - 1959 .....\$8,500
- JD 720 High Crop - 1957.....\$12,500
- JD 730 High Crop- Very Nice - 1958 .....\$13,500
- Ferguson 35 "New" - Under 1 Hour - 1956 .....\$24,500
- JD R.....Coming In
- JD D Unstyled.....Coming In
- (2) JD GW.....Coming In
- JD AR.....Coming In
- JD A - Unstyled.....Coming In

*I Am Rebuilding My Collection, Will Buy Clean Or Odd John Deere's. Buy-Sell-Trade. Lots Of Older Sales Literature, Toys And Pedal Tractors For Sale. Lots Of Owners Manuals/Parts Book - Call.*

**LLOYD WENGER**

251 S. Race St.  
Myerstown, Pa. 17067  
717-866-2130 Days  
717-866-7147 Evenings