

- 1992 Ford F-150 XLT, 4x4 V8, 5 Spd., Loaded Red, 19,200 Mi. .... \$16,900
- 1991 Pontiac Grand Prix LE 4 Dr., Quad 4 AT, AC, CR, Tilt, PDL, AM-FM Cass., White, 55,900 Mi. .... \$8,800
- 1989 Ford Thunderbird LX, V6, AT, Loaded, Black, 66,100 Mi. .... \$7,900
- 1989 Buick Skylark V6, AT, AC, CR, Tilt, AM-FM Cass., White, 67,100 Mi. .... \$5,900
- 1989 Ford Club Wagon XL 15 Pass., Maxi-Van, V8, AT, Dual AC, CR, Tilt, AM-FM, Maroon-White, 57,000 Mi. .... \$10,800
- 1989 Chevy S-10 4x4 Durango, 4.3 V6, AT, AC, CR, Tilt, AM-FM Cass., Black, 70,000 Mi. .... \$7,900
- 1988 Chevy Astro CS 8 Pass., V6, AT, AC, Tilt, AM-FM Cass., Gray/Silver, 52,800 mi. .... \$8,600
- 1988 Ford Aerostar XLT, 7 Pass., V6, AT, Loaded, Gray/Silver, 74,900 Mi. .... \$6,900
- 1988 Buick Skyhawk 4 Cyl., AT, AC, CR, Tilt, AM-FM Cass., Red, 71,000 Mi. .... \$3,900
- 1987 Olds Delta 88 Royale V6, AT, AC, CR, Tilt, AM-FM Cass., Maroon, 74,100 Mi. .... \$4,800
- 1986 GMC 6000 8.2 Diesel, Cab & Chassis, 5 Spd. White, 64,300 Mi. .... \$6,800

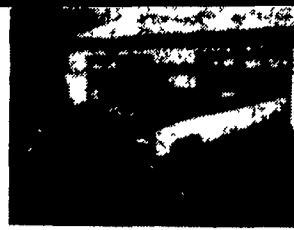
**Brubaker's Auto Sales**  
Myerstown, PA  
717-866-5237

**YES!!  
ENGLE FORD  
DOES MAKE IT EASIER!!**

- Over 100 New & Used Trucks, Vans & 4x4's
- 1991 Dodge D250, 4x2 Cummins Turbo Diesel, AT, AC, Loaded
  - 1986 F250 4x4 XLT, V8, AT, Snow Plow, Work Ready
  - 1991 E350 15 Passenger Van 7.3L Diesel, A/OD, AC
  - 1989 F250 4x2 XLT 351, V8, Auto Trans., A/C, Heavy Hauler
  - 1989 Chevy Crew Cab SRW, 4x2, 350 V8, AT, 32,000 Miles
  - 1990 Chevy 3500 Cab & Chassis, DRW, 4x4, A/C, V8, 5 Spd
  - 1988 Ranger XLT, Super Cab, 4x4, V6, A/C, 5 Spd
  - 1989 Bronco II XLT, V6, 5 Spd., AC, Power Equipment
  - 1989 F350 Crew Cab DRW, XLT, 460 V8, A/OD, Power Equipment, Cruise & Tilt
  - 1989 Ford Conversion Vans, Quad Chassis w/Rear Seat Bed, F&R A/C & Heat, V8, AT, 3 to Choose.
  - 1987 F350 Crew Cab, XLT, AC, AT, Power Equipment
  - 1990 F250 4x4 V8, AC, Auto Trans, Work Ready, 19,000 Miles.
  - 1987 Aerostar XL 7 Passenger, V6, A/OD, AC, Cruise & Tilt
  - 1989 Ranger XLT, AC, 5 Spd, 2.3L, 30,000 Miles, Blue & Silver

**ENGLE FORD, INC.**

Rt. 147 North  
Millersburg, PA 17061  
The Call's On Us 1-800-242-8075  
1-717-692-4841



1990 GMC SL 3500, Crew Cab, 350 FI, Auto, PS, PB, Air, AM-FM, Dual Tanks, 9,000 GVW, 24,000 Miles, Local 1 Owner, Red & White, Ex. Cond.

**\$13,900**



88 Chevy K30 4x4 Dually, 350 FI, Auto, PS, PB, Air, AM-FM Lock-Out Hubs, 54,000 Miles, 1 Owner, White

**\$10,500**

**A&J Auto Sales**

798 E. Main St. Rt. 322 East, Ephrata, PA 17522  
717-733-2873



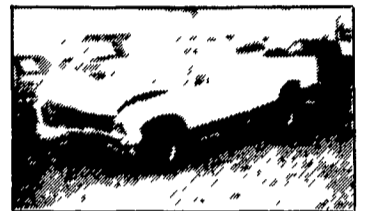
**AUTO BODY & SALES**

1701 B Division Hwy.  
New Holland, PA • 717-355-0644

Specializing In Rebuilt Collision Damage Vehicles



'87 FORD RANGER EXT. CAB 4x4, XLT, 2.9 FI, 4 Spd., Cass., 71,000 Mi., Light Roll w/ Some Parts ..... \$3,950



'89 CHEVY S-10 TAHOE Longbox, 4.3L V6, AT, PS, AC, Cass., 26,000 Mi., Front \$800 ..... \$2,900

**REEDMAN LEASING  
1800 CARS-TRUCKS**

\* All Cars Below Equipped With Auto Trans, Air Cond, PB, PS, & Stereo.

\* '93 NEW JAGUAR XJ6 SDN \$539.00  
Per Month For 36 Months. Closed End Lease. Stock #92059 6 Cyl VIN PC676280 MSRP \* \$53,133 Total Of Monthly Payments \$19,904.00 With \$2500 Down

\* '93 NEW CORVETTE CONVERTIBLE \$431.58  
Per Month For 36 Months. Closed End Lease Stk #15062 8 Cyl VIN P5107073 MSRP \* \$44,254 Total Of Mthly Payments \$15,538.88 With \$4000 Down

\* '93 NEW LINC MARK VIII \$424.27  
Per Month For 24 Months. Closed End Lease. Stock #99536 8 Cyl VIN PY667386 MSRP \* \$37,230 Total Of Monthly Payments \$10,182.48 With \$3000 Down 11\* Per Mile Over 30,000

\* '93 NEW LINC TOWN CAR \$393.08  
Per Month For 24 Months. Closed End Lease. Stock #98001 8 Cyl VIN PY602431 MSRP \* \$34,780 Total Of Monthly Payments \$9433.92 With \$3000 Down 11\* Per Mile Over 30,000 Miles

\* '93 NEW LINC CONTINENTAL \$299.00  
Per Month For 24 Months. Closed End Lease. Stock #99004 6 Cyl VIN PY602337 MSRP \* \$33,918 Total Of Mthly Payments \$7176 With \$3600 Down 11\* Per Mile Over 30,000 Miles

\* '93 NEW CHRYS NY SALON \$199.00  
Per Month For 36 Months. Closed End Lease. Stock #90005 6 Cyl VIN PD102717 MSRP \* \$20,000 Total Of Mthly Payments \$7164. With \$2200 Down

\* '93 NEW DODGE STEALTH \$267  
Per Mth For 48 Months. Closed End Lease. Stk #86006 6 Cyl VIN PY005812 MSRP \* \$21,726 Total Of Mthly Pymts \$12,816 With \$1500 Down Total Of 55,000 Mi

\* '93 NEW MERC GRAND MARQUIS GS \$296.00  
Per Month For 24 Months. Closed End Lease. Stock #91004 8 Cyl VIN PX601241 MSRP \* \$23,529 Total Of Mthly Payments \$7104 With \$2500 Down

\* '93 NEW MERC SABLE GS \$219.00  
Per Month For 24 Months. Closed End Lease. Stock #94501 6 Cyl VIN PA600119 MSRP \* \$18,140 Total Of Monthly Payments \$5256 With \$2000 Down 11\* Per Mile Over 30,000 Miles

\* '93 NEW PLY VOYAGER \$199.00  
Per Month For 36 Months. Closed End Lease. Stock #78002 4 Cyl VIN PR107380 MSRP \* \$15,378 Total Of Monthly Payments \$7184 With \$1500 Down

**SHOP REEDMAN BEFORE YOU BUY LEASE OR RE-LEASE A CAR OR TRUCK**

FLASH! If You Still Have Payments On Your Present Leased Car Or Truck We Would Like To Bid On Your Lease For A New Vehicle, Individual Lease, Or Company Leasing.

\* '93 NEW T-10 BLAZER \$247.00  
Per Month For 48 Months. Closed End Lease Stk# T-5304 6 Cyl VIN P2160853 MSRP \* \$20,862 Total Of Mthly Pymts \$11,856.00 With \$1500 Down Total Of 55,000 Mi

\* '93 NEW COUGAR XR7 \$287.05  
Per Month For 24 Months. Closed End Lease. Stock #93510 6 Cyl VIN PH602930 MSRP \* \$16,898 Total Of Mthly Payments \$6889.20 With \$1500 Down

\* '93 NEW CHEV LUMINA SDN \$198.00  
Per Month For 36 Months. Closed End Lease. Stock #95322 6 Cyl VIN P1137422 MSRP \* \$15,205 Total Of Mthly Payments \$7128. With \$1500 Down

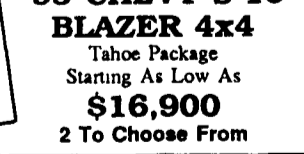
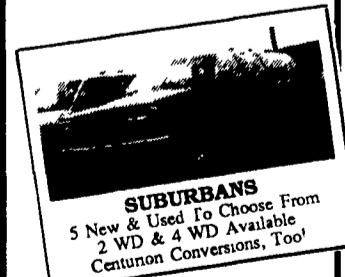
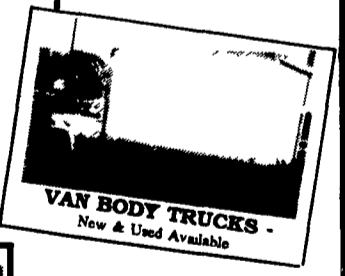
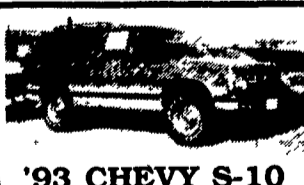
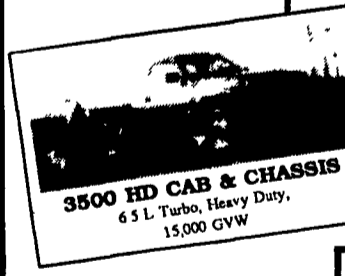
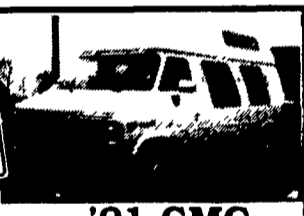
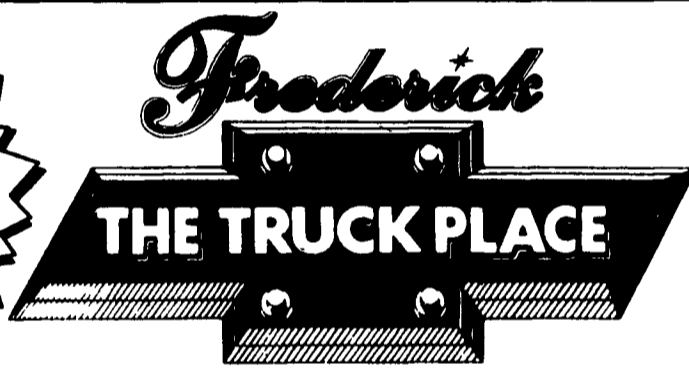
\* '93 NEW OLDS CUTLASS SUPREME S CPE \$261.14  
Per Month For 36 Months. Closed End Lease. Stock #82017 6 Cyl VIN PD306913 MSRP \* \$19,320 Total Of Mthly Pymts \$9401.04 With \$1500 Down

**Closed End Leases**

First Monthly Payment Plus A Security Deposit Equal To One Monthly Payment is Required Upon Delivery. Lessee May Have The Option To Purchase The Car At Lease End At A Price To Be Negotiated With The Dealer At Lease Inception. At The End Of The Lease If You Do Not Exercise Your Option To Buy You Will Pay A Mileage Charge Of 10\* Per Mile For Each Mile In Excess Of 15,000 Miles Per Year Plus The Costs Of Any Excess Wear Or Tear.

\* Price Includes All Cost To Be Paid By A Consumer, Except For Licensing Costs, Registration Fees & Taxes.

CALL 215-757-4961  
Ask For Reedman Leasing Dept.  
Reedman Rte 1 Langhorne Pa.



SUBURBANS • HI CUBES • CREWCABS • DUMP TRUCKS • ROLLBACKS

IF WE DON'T HAVE IT, WE'LL LOCATE IT!



1505 Quentin Rd.  
Rt. 72 - Lebanon  
SALES HOURS:  
Mon.-Fri. 9-9  
Sat. 9-5

The SUPERMARKET OF TRUCKS  
(717) 274-1461 • PA (800) 222-5523