

NEW & USED

CAST IRON BUTCHER POTS AND DOORS
 POLS: 19" to 28" Diameter
 12" to 15" Deep
 Butcher Furnaces
 Single & Double
 All Cast Iron
 Heavy Duty



JACOB & SARAH'S ANTIQUES & BAKED GOODS

44 FURNACE ROAD
 QUARRYVILLE, PA 17566

Many Other Collectables



Leave Message
 1-717-786-1920

TIRONIE'S TARPS

717/584-2928
 1/800/874-2928

PAINTED STEEL ROOFING & SIDING

- Galvanized/Galvalume
- 29/26 Gauge
- 3 Major Brands Available
- Large Stock Trim & Sheet
- SV Crimp Metal

AS LOW AS \$32⁰⁰ per/sq.

Conestoga Building Supply
 New Holland, PA 17557
 717-354-2613 or
 1-800-844-9484

33 RECREATIONAL VEHICLES

1976 27' Pace Arrow Motor Home, 440 Dodge engine, air, power brakes, cruise control, new inspection, sleeps 8, lots of extras, 45,080 miles, \$11,500 717/354-0273

30-ft camper trailer \$1,500 OBO Located Arcadia Farm Campground, Morgantown PA 2 miles from Hopewell Furnace NHS Consider trade for car with PA insp (215)844-1236

'81 Ford Motorhome, 460 Engine, 37,000 Miles, Awning, Excellent Condition Inside and Out \$10,000 717-334-0824

'85 Honda 200X 3 wheeler, excellent condition, 717/569-4008

34 AUTOS

1985 Toyota Tercel SR5 4WD Wagon, 5Sp 66,000, VG, \$3650 717-677-6721

90 Olds Calais 4 Dr, Blue, Quad 4 Aluminum Wheels Loaded, 10,000 Miles \$7,995

90 Plymouth Horizon 4 Door, 100,000 Miles, Stick \$4,400

91 Honda Civic DX, 4 Door, Automatic, A/C, 28,000 Miles \$8,400

Burkholders Auto
 Danville, PA
 717-437-3848

35 TRUCKS & TRAILERS

'85 GMC 2500, 3/4 Ton Pick-Up Blue and Silver 8600 GVW, PS, PB, AM-FM Radio Set Up for Towing Bumper and Gooseneck Hitches \$3600 908-782-6006

'85 GMC Sierra 1500 4WD, good condition, automatic, overdrive, AM/FM stereo, high miles 125,000, \$4500 215/767-9317

'86 Chevy Scottsdale 20 Series Suburban, 5 passenger, 350 auto, PB, PS, air, AM-FM, 55,000 miles, brown & tan, 1 owner, excellent condition, \$8,600 717-733-2873

'86 GMC High Sierra, HD, 1/2 ton, 305 auto, PB, PS, air, AM-FM, 6,100 GVW, 29,000 original miles, like new, 1 owner, \$6,700 717-733-2873

'86 Keifer built aluminum goose-neck livestock trailer 22x8 in VG condition Selling w/or without '88 Ford F350 dually truck, 460 EFI in VG condition Call before 9pm, (410)775-7177 ask for Owen

'87 Chevy C10 4x4, 305 FI, auto, PS, PB, AM-FM cassette, Rally whls, 49,000 miles, 1 owner, red, \$8,600 717-733-2873

87 Chevy C20 HD, 1/2 ton pickup, 350 FI, auto, PS, PB, air, AM-FM, dual tanks, 8,600 GVW, blue & white, \$7,400 717-733-2873

87 Chevy C30 Silverado, 3+3, crew cab, 454 auto, PS, PB, PW, PDL, cruise, tilt, air, AM-FM, towing package, high rise fiberglass cap, 37,000 miles, like new 717-733-2873

'87 Ford XL F250, 4x4 w/8' stake body, 351 auto, PB, PS, AM-FM, dual tanks, 8,600 GVW, 41,000 miles, excellent condition, \$8,900 717-733-2873

'88 Chevy C70 with or without 18' cargo van, 366, 5 spd., PS, PB, 23,000 GVW, 65,000 miles, 1 owner, \$8,900. 717-733-2873

'89 Chevy G20 Cargo Van, 305 FI, auto, PB, PS, air, AM-FM, 47,000 miles, 1 owner, like new, \$8,900 717-733-2873

'89 Ford F350 crew cab, 460 EFI, auto, PB, PS, AM-FM, dual tanks, 9,000 GVW, dark blue, new radials, excellent condition 717-733-2873

'90 Dodge B350 12 passenger van, 318 EFI, auto, PB, PS, dual air & heat, charcoal, 28,000 miles, excellent condition, \$10,500. 717-733-2873

'91 Ford F150 XLT Lariat pickup, 300 EFI, 5 spd., PS, PB, air, AM-FM, dual tanks, 31,000 miles, charcoal w/balance of factory warranty, excellent condition, \$9,950. 717-733-2873

Engines: Detroit 8V-71, Cummins 350; Chev 427; Detroit 8 2T; Cat 3406-325 hp. (301)662-7702.

Fertilizer lime truck, Stoltzfus boom type spreader, dual lock-in axle, excellent condition. 814-364-2126 Days 8-5, 814-422-8166 Eves.

FOR SALE: 1986 C-30 Dually 454 engine gooseneck trailer, equipped 11,000# GVW, \$5950 717-359-7460.

Ford 85 F250, 8600GVW, 4Spd., 306 Cylinder, 76,000 Miles, \$4500 OBO 717-252-3342 York County.

Ford F350 1968 dump truck, good working condition 717-776-4737.

For Sale New reproductions of front panel and tailgate for 1953 Chevy pickup truck bed Lancaster Co 717/859-2694

Fruehauf flat trailers, 1-45', \$3750, 1-48' \$4750, 20" spoke wheels Felton, DE 302-284-8774

IH 1700 w/4-cylinder Detroit diesel, w/mounted Daffin feed grinder/molasses mixer, first \$1500 or offer (304)876-6653

IH 1890 Rollback, 30,000 GVW, 21' Swartz Body, Excellent Condition \$5,400 Bucks County, PA 215-297-8354

Mack 1982 Midliner diesel engine, 18' box with roll-up door, 25K GVW, 145K miles, very good condition, \$6000 Call 717-652-1012

New plate steel, good for trailer floors and dump bodies 3/16", \$13/per running foot, 1/2" \$17/per running foot, 8' wide up to 35' length Heavier thickness available We can deliver KISCO SALVAGE, RT 209, Tremont, Tremont 17981 717-695-3332

WANT Cummins 350 diesel engine in good condition (717)534-1253

84-FRHT cabover double bunk, maroon w/nice stripes, 400-Cummins, RTO-14613 transmission, Eaton rears, all-aluminum wheels, twin chrome stacks, spotlight, good clean truck, \$14,800 83-FRHT cabover, maroon, 400-Cummins, w/ Jake, 9-speed, Rockwell rears, good clean truck, \$7,800 410-928-5162

Mack tractors; 318&350 Detroit motors; Lo-boy; Flat & van trailers; Fuller 13Spd. transmission; Pete air-ride; '38Int. rear ends; Electrical Roto-phase, motors, Starters & switches. Clearfield. 814-672-3196.

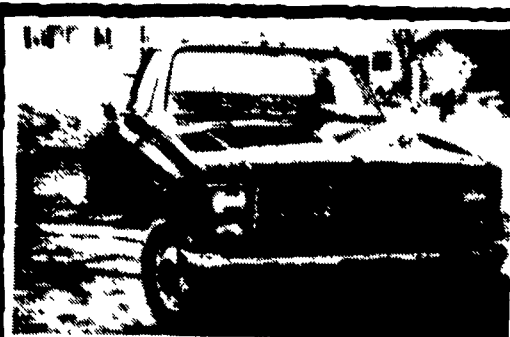
Mack, U model, 1982, 300 engine, 25' aluminum dump trailer, \$15,000. Kenworth, 1973, 350 Cummins, 25' aluminum dump trailer, new engine, \$15,000. Call (215)794-7309

81 Int. 2600 tdm. axle, 22 ft. flat dump, with grain sides, 56 GVW; 80 Int 1800, 20 ft. flat, with grain sides, 27 GVW; 78 Ford P600 step van, 15 GVW; 74 Ford 750 Cab/chassis 27GVW; 65 GMC 5000, 22 ft. van body, 27 GVW (609)358-0831.

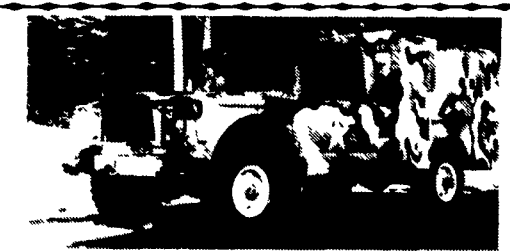
84 Ford F150, Auto, PS, PB, Air, 2 Tone Tan, Excellent Condition, Original Owner. Lancaster County (717)626-5532.

8500 gallon aluminum tank trailer w/vapor recovery and sculley system, bottom load, \$3,750 (215)343-0156.

'85 Chevy Sport Van, 12 passenger, 350 auto., PB, PS, AM-FM cassette, mechanically good, needs paint, \$2,900 717-733-2873



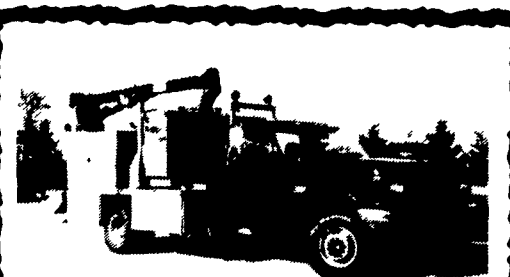
'83 GMC 3500, New Engine, New Paint, Excellent Condition, Best Offer.
 Call Marlin
 (717) 933-4887



KAISER/JEEP 1 1/2 TON 4x4 MAINTENANCE TRUCK
 Front Winch, 6 cyl. Engine 8 Speed Trans. Equip with 300 Amp Hobart Welder, 7.5 KW Generator. Single or 3 Phase. Air Compressor. Aluminum Locking Cabinets
\$11,500.00
 814-834-1018 St. Marys, PA



1981 Mack In Excellent Condition
 300 Engine, 5 Speed Trans., 325,000 Miles, Rod & Main Bearings Replaced 250,000 Miles, 411 Rears, Power Steering, New 1992- Air Cond., Walinga Blower, Wet Tank & Pump (Hydraulic), 1971 City Dump Trailer, 30 Ft. Rollover Top, 3 Partitions, Agway Air Lock With Auger.
 Asking Price **\$25,000.00**
 28' Elevator w/Heavy Duty Chain, 7 HP Honda Gas Engine \$2,000.
 5th Wheel Equipment Trailer, 18,000 Cap., 3 Axles, \$2,000
 Includes 5th Wheel Hitch For Truck
717-582-2352
717-582-4431



1988 Ford Super Duty, 70,000 miles, diesel engine, with extra springs, 5 speed transmission, all new, 10 ply Bridgestone tires, A/C, stereo, with air ride seat (driver's side), all aluminum utility body, 8 month bumper to bumper warranty.

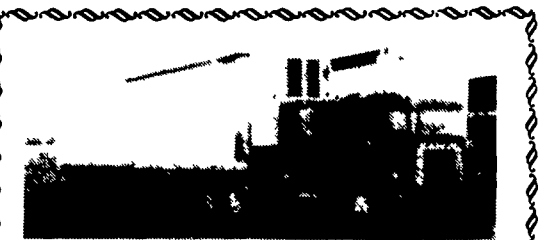
Included With Truck
 IMT 3016 crane, 6000 lb. cap
 IMT 1154 Hyd-Air compressor
 Sam 400 Lincoln welding machine
 Perkins diesel engine (4000 hrs.)
 Alrco Radiograph (Portable cutting machine) (1992 model) Powcon Starcut Plasma cutter (Cutting capability up to 1" Steel)
 (1992 model) MK Prince torch, spool gun with flow meter
 (1988 model) (2) LNS semi-automatic wire feeders
 All ground cables, stinger cables, and LNS control cables - (200')
 Uniden 1000 Cellular phone
410/239-4011 after 5:00 P.M.



33 Ft. Gooseneck Utility Trailer With Alum. Sides
 2-6000 Lbs. Torsion Axles
\$3,500.00
(410) 357-5820



79 Ford 9000 Diesel
 Clean, 9 Speed, Good Rubber
Asking \$7,500
ALSO:
40' Aluminum Flat Bed Trailer With Grain Side
Asking \$5,250
302-834-7422
 Make Offer



1985 RST688 LST - 350 Mack, T2100 Trans., Nuway Air Ride, Asking \$25,000.00
 1985 Great Dane Reefer, 45'x13 1/2' x96", SBI Unit, Asking \$11,500.00
 1985 Mack + 1985 Reefer Combination, Asking \$35,000.00
 1981 Fruehauf flatbed, 42' w/aluminum floor & steel frame, new tires and brakes, asking \$6,500
 Spider w/air-cooled engine, asking \$6,000
 1981 Fruehauf flatbed + spider combination, asking \$11,000
 1985 Great Dane Van, 48'x13'6"x102" w/Plywood Lining & Oak Scuffboard \$7,500.00 OBO
 1975 Trailmobile 40' Flatbed, Complete Rebuilt Tandem and Floor, Asking \$3,500.00
 1976 Dorsey Van 45'x13'6"x96" FRP w/Vents, Asking \$2,750.00
 1977 Fruehauf Van 45'x13'6"x96" Alum. w/Vents, Asking \$2,750.00.
 1981 Halb Knuckle Boom, Self Contained, Has 23' Reach, Asking \$6,500.00.

Call Day (302) 934-8506
 Nights (302) 934-7718
 Ask for James Bartleson

CASH FOR USED DIESEL TRUCKS!

WE NEED 1/2 TON TO ONE TON:
 • FORD DIESELS • DUALIES
 • SUPERCABS • DUMPS
 • CREW CABS • UTILITY BODY
 • DODGE CUMMINGS • FLAT BEDS
 • 2WD or 4x4 • CAB & CHASSIS

PLEASE! PLEASE! PLEASE!

Before you sell or trade your diesel in somewhere else for LESS, **CALL US!**
 We Pay More For Used Diesel Trucks Than Anyone.

TRY US!

717-949-2000 KELLER BROS. RD 7, Box 405 Lebanon, PA 17042



FOR SALE
1979 Morgan Dump Trailer
 24.5 Rubber Spread Axle, 38' Frame, 36' Bed Roll Tarp, Two Way Gate Grain Chute
\$12,500 OBO
717-898-0129