

# Farm Forum

(Continued from Page A10)

being the price mover.

•Develop a supply management program to properly manage any potential surplus milk. A two-tier program is the preference.

The dairy farmers making up the nucleus of the dairy campaign are urging their fellow dairymen across the United States to contact the co-ops or organizations they belong to and urge them to support the National Dairy Campaign. Failure of the organizations to respond to their members will only mean the members will have to

leap frog over their organizations and do the job themselves.

I'm asking all dairy farmers, regardless of your affiliation, to call your United States senator and congressmen and urge them to support the efforts of the National Dairy Campaign.

Let your elected officials know how it really is down on the farm. Any senator or congressman can be reached by calling the capital switchboard at (202) 224-3121.

Also, call the following people, Sen. Leahy's ag committee at (202) 224-5207; Congressman Harned Volkmer, chairman of the

House Committee on Dairy at (202) 225-1867; U.S. Secretary of Agriculture Mike Esby at (202) 720-3631.

This movement of dairy farmers will be the greatest grassroots effort ever made by dairymen. Dairy farmers will be the ones that will make the change. Push the lame excuses aside that you have given and, in their place, pledge a united effort by all dairy farmers.

In Pennsylvania, the Pennsylvania Milk Marketing Board establishes minimum retail prices.

Currently, supermarkets in Towanda and Tunkhannock are selling one gallon of milk for \$2.19. Three years ago, the same milk sold for \$2.55 per gallon. This is a 36-cent drop in three years and

## Arabian Horse Mini Fair Set

YORK (York Co.) — The southcentral district of the Pennsylvania Arabian Horse Association will be having an Arabian

Horse Mini Fair at the York Fairgrounds on Saturday, April 24.

Included in the fair are a stallion row, featuring south central Pennsylvania stallions and a private treaty sales row, which will feature Arabians for sale. Also included are exhibitions, demonstrations, youth judging, pony rides, and more.

The fair is set to begin at 9 a.m. and continue until 5 p.m. Admission is free.

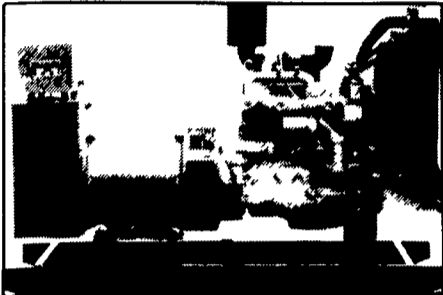
For more information, contact Chris Vasellas, (717) 927-6443 or Mary Seward, (717) 367-8252

every cent of that drop was taken away from dairy farmers.

It's time to call a halt to these inadequate prices. Dairy farmers must insist on a new pricing formula that reflects the cost of producing milk.

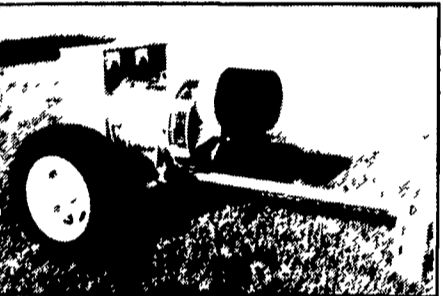
Please make your calls today.  
ARDEN TEWKSBURY  
Manager, Pro Ag

## GENERATORS



**AUTOMATIC and MANUAL SYSTEMS**

DIESEL  
L.P. GAS  
NAT. GAS  
NEW & USED



**LEROY SOMER PTO ALTERNATORS**

BRUSHLESS  
INDUSTRIAL GRADE  
11 to 60 KW

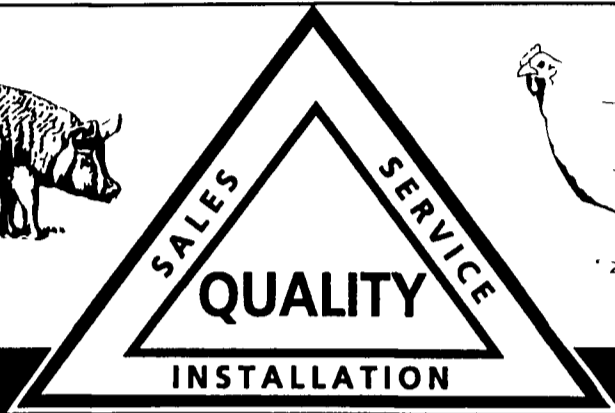
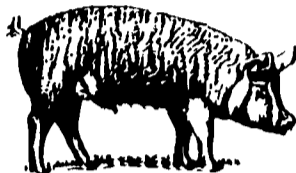
READY FOR THE NEXT STORM?

For Sales and Service Call The People Who Know Generators

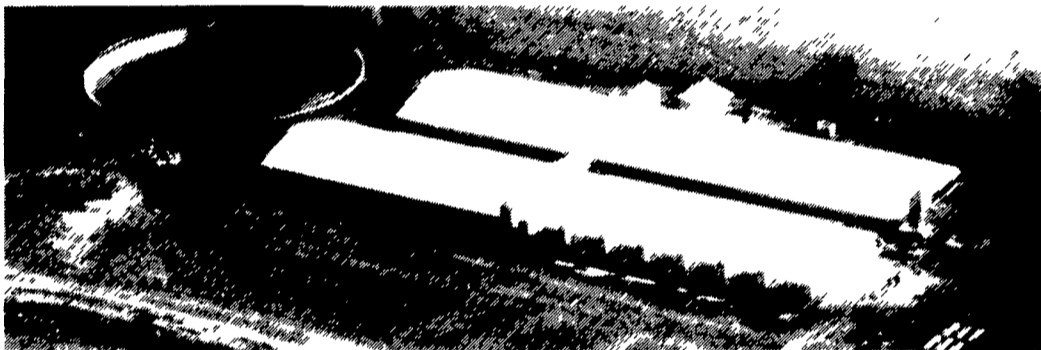
### MARTIN ELECTRIC PLANTS

280 Pleasant Valley Rd., Ephrata, PA 17522-8620

Tel: 717-733-7968 Fax: 717-733-1981



## SWINE - POULTRY - LIVESTOCK SYSTEMS



Recently Completed 1200 Sow Unit

### FARM INCOME SPECIALISTS

Tri-County can assist you in planning a facility to meet your needs including cash flows, production contracts, financing, nutrient management planning and permits.

### DESIGN AND CONSTRUCTION

Computerized estimating and drafting for all your construction equipment needs. Renovations and new construction packages - large and small.

### SERVICE

We offer a specialized staff to handle all your repair and service needs. Emergency repairs are available 24 hours a day.

### PARTS

We inventory a large selection of parts available for immediate pickup or U.P.S. delivery.

Call Tri-County for all your swine, poultry & livestock facility needs. We offer a complete line of quality products and services for today's producer at a price you can afford.

Get The

*Spirit*

**THE ONLY  
OUT FRONT ZERO  
TURNING RADIUS  
MOWER MADE IN 30"  
TO 50" CUTTING WIDTH  
AT AFFORDABLE PRICES**



Increase production with a new Spirit. The **QUINSTAR** Spirit ZT with exclusive Q Drive or hydrostatic drive and unique natural lever steering allows the operator complete control of the low profile full floating 30", 36", 42" or 50" mower deck. Deck height adjustment and all controls are easily accessible from the fully cushioned operator seat. Powered by an electric start B&S 12-hp I/C, 14 HP or 16 HP Vanguard engine mounted behind the operator. Available w/optional 4-bu. grass collection system. Spirit... an innovative outfront zero-turning-radius mower at an affordable price.

Experience a new Spirit

### LAWN CARE DISTRIBUTORS

Martinsdale, PA 17549  
Dists. for PA, MD, DE, NJ, NY  
215-445-4541  
Dealer Inquiries Invited

**aerotech**  
Ventilation Systems  
And Controls

**GSI** Grain  
Systems,  
Inc.  
Galvanized Feed Bins,  
Flex Flow Augers And  
Sow Feeding Systems

**Umberland**  
Poultry Feeding  
Systems



**TRI-COUNTY**  
CONFINEMENT SYSTEMS, INC.

608 E. Evergreen Rd., Lebanon, PA 17042  
Hours: Mon.-Fri. 7:00 to 4:30; Sat. 8:00 to 12:00

Ph: 717-274-3488

