

Marburger Farm Dairy

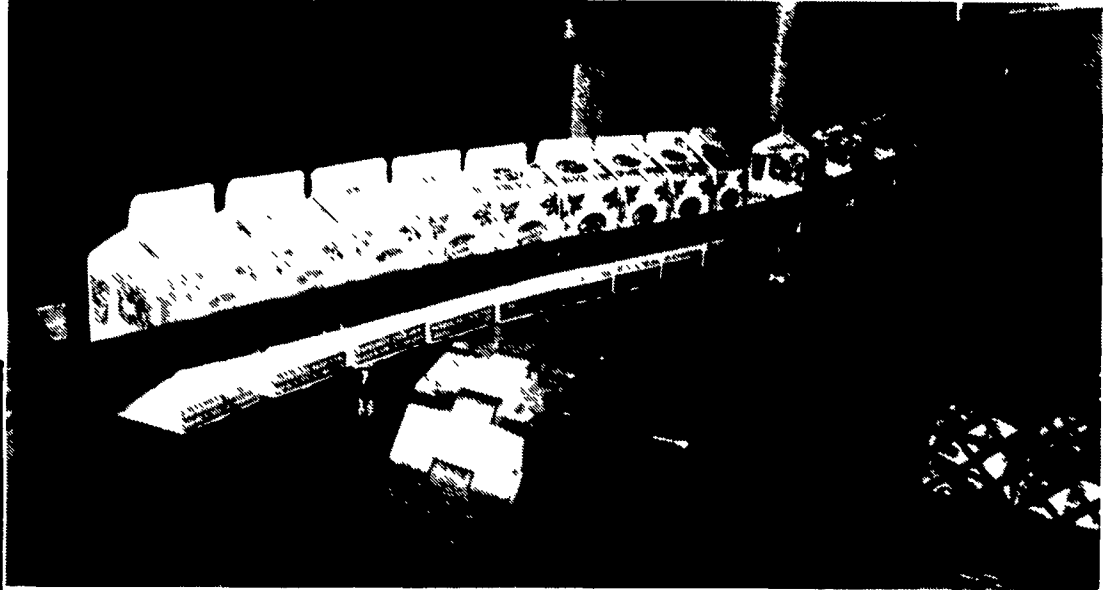
(Continued from Page A16)
 most of the young stock was released in time to save themselves. Seven animals were lost. This tragic fire happened 69 years to within one day of when the barn on the farm had burned in 1910. George Cudoc, manager of the 380 acre farm that is part of the dairy operation, had come to manage the dairy herd 15 months before the barn fire. It wasn't long before he saw that to accomplish good things with a dairy herd, you also needed some control over inputs, especially feed. Before long, Cudoc was named manager of the whole farm operation, and this city-boy, Penn State graduate

with a degree in animal science, took on the management of the farm. Although the circumstances of the barn fire were unfortunate, Cudoc got the opportunity to design the new barn to his specifications. "I'm probably the luckiest city boy that ever happened out of the city," Cudoc said. "I was born and raised in Pittsburgh for the first eight years of my life. Not many people have the opportunity to do what I do with that kind of background. Nevertheless, I had the opportunity to design the barn and the operation, so I can't complain about it." The present herd of 130 to 140

milk cows is housed in free-stalls with milking in a double-six parlor. The drive-through barn accommodates TMR feeding and facilities for separation of the milking herd into four groups. After experimenting with other group separations according to production, Cudoc has increased production with the present groupings that include: a post-fresh group of 0 to 60 days in milk; a high production group over 60 days in milk and over 70 pounds of milk production; a group of all two-year-old heifers; and a low end, late lactation group. Cudoc calls the change to separate the two-year-old heifers into a

group away from the older cows has been the most important management decision to increase production that he has made. Heifers now average 18,000 lbs. to 19,000 lbs., 4,000 lbs. of milk more than when they did not have their own group. Another increase in production was experienced when open water troughs were installed and supplied from a holding tank in the barn. With this more free access to water, the cows drank an unbelievable amount of additional water. And very recently, this water is now warmed from the milk that passes through a newly-installed

plate cooler on the pipeline between the milking parlor and the bulk tank. Tremendous strides have been made in production. In 1978 when Cudoc came to the farm, the cows were not on test. Today, the rolling herd average is at 21,500 lbs. of milk and more than 40 cows in the herd have lifetime production records of more than 100,000 lbs. The young stock are housed in a separate barn on another farm, and the new heifer management program from Pennsylvania DHIA has been successfully used for identification and compiling records for a (Turn to Page A27)



On the production line, milk is processed four days per week and the drink products on Wednesday.

WEAVER CEILING & INSULATION

Tri-Ply Ceilings

Strong Woven Polyethylene Fabric
 Smooth, White - easy to wash
 Soft - sound absorbent

Installed as low as 19¢ Sq. Ft.

For New or Renovated Buildings

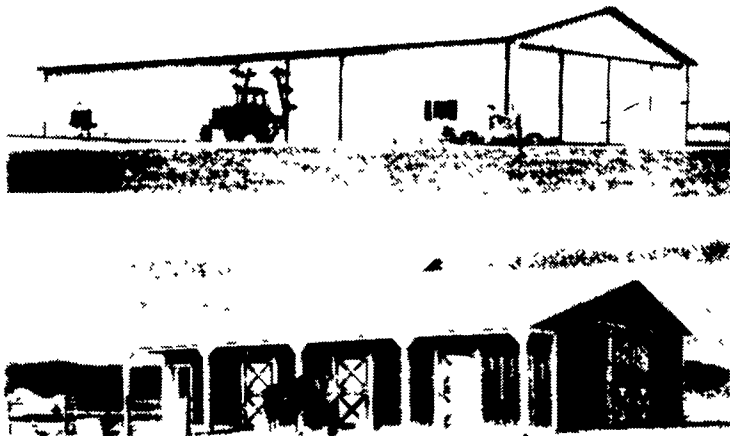
DOUBLE BUBBLE RADIANT BARRIER FOIL INSULATION **27¢** Sq. Ft.
 Ask For Large Quantity Prices!

American & Dutch Made Products
 CALL

717-539-2615

MORTON BUILDINGS Since 1903

- Horse Barns
- Riding Arenas
- Garages
- Warehouses
- Offices
- Shops
- Equipment Storage
- Aircraft Hangars



MORTON BUILDINGS, INC.
 Excellence — Since 1903

CONTACT:
 3368 York Rd. P.O. Box 126,
 Gettysburg, PA 17325 Phillipsburg,
 717/624-3331 NJ 08865
 201/454-7900

Call or write today for more information

1-800-447-7436

Illinois only, call 1-800-426-6686

ROHRER'S

THE COMPLETE SEED STORE

Farm--Garden--Flower--Lawn Grass Seeds

CROP PROTECTANT PRODUCTS

Agrox D-L Plus.....1.8 oz. Pk.	\$2.85
Benlate 50 DF.....2 Lb. Bag	\$37.50
Captan 50W.....5 Lb.	\$18.50
Dacthal 75W.....4 Lb.	\$27.80
Diquat.....1 Gal.	\$87.50
Dormant Oil.....5 Gal.	\$27.50
Devrinol 50W.....4 Lb.	\$34.00
Guthion 35W.....3 1/2 Lb.	\$22.75
Lannate.....8 Oz.	\$9.50
Lorsban 50.....5 Lb.	\$34.75
Malathion 25W.....5 Lb.	\$11.75
Marlate 50W.....4 Lb.	\$16.80
Piyac Spread/Sticker...1 Gal.	\$28.50
Ridomil 2E.....1 Qt.	\$45.50
Streptomycin 17.....8 Oz.	\$8.50
Foam Gard.....1 Qt.	\$9.95
AV-70 Plus Algacide.....Gal	\$19.50
Carbamate 76.....10 Lb.	\$49.50
Imidan 50W.....5 Lb.	\$29.75
Isotox Seed	
Treater (F).....1 Lb.	\$9.95
Karmex DF.....4 Lb.	\$25.00
Manzate 200 DF.....6 Lb.	\$19.80
Orthene Ornamental 1 Lb.	\$14.29
Orthene Tobacco....1 Lb.	\$11.50
Charge Starter Solution (8-32-5).....5 Gal.	\$15.50/Gal.
Pramitol.....1 Gal.	\$24.50
Pyrenone Crop Spray.....Qt.	\$64.50
Roundup.....Qt.	\$47.50
Roundup.....1 Gal.	\$95.00
Roundup..2 1/2 Gal. Jug	\$128.75
Sevin 50W.....5 Lb.	\$17.50
Dipel.....Qt.	\$9.75
Weeder 64.....1 Gal.	\$14.50

ROHRER'S FANCY LAWN GRASS FOR A GREENER, FINER LAWN

ECONOMICAL ONE LB. COVERS 250 SQ. FT.

1 lb. box	\$4.49	10 lb. bag	\$34.69
3 lb. box	\$11.99	25 lb. bag	\$84.19

ROHRER'S GOOD TURF LAWN GRASS SEED

GOOD GENERAL PURPOSE MIXTURE

1 LB. COVERS 250 SQ. FT.

1 lb. box	\$3.69
3 lb. box	\$9.49
10 lb. bag	\$26.39
25 lb. bag	\$63.39



TRI-RYE LAWN GRASS SEED

1 lb. box	\$2.99	10 lb. bag	\$21.99
3 lb. box	\$7.69	25 lb. bag	\$52.49

SHADY LAWN GRASS MIXTURE Best For Shaded Areas

1 lb. Box	\$3.29	10 lb. Bag	\$23.19
3 lb. Box	\$8.29	25 lb. Bag	\$55.49

Highland Pasture Mixture.....50 lb. bag	\$98.50
Waterway Grass Seed Mixture.....50 lb. bag	\$73.50
Horse Pasture Mixture.....50 lb. bag	\$112.50

VEGETABLE SEEDS
 Over 150 Proven Varieties
 For Our Growing Area!

STORE HOURS
 7:30 A.M.
 to
 5:00 P.M.
 Saturday
 7:30 A.M. to 3 P.M.

P. L. ROHRER & BRO., INC.

Smoketown, Pa.

Ph: 717-299-2571
 FAX 717-299-5347