

# Penn Gate Beautician Clara Is Grand Champion

**VERNON ACHENBACH, JR.**  
Lancaster Farming Staff  
**HARRISBURG** (Dauphin Co.) — A pair of 5-year-olds captured the grand and reserve grand champion honors of the 40th state Holstein Spring Show, held last Friday in the Large Arena of the state Farm Show Complex.

Judge Dennis Patrick, of Woodbine, Md., said, "The quality really ran deep in all classes. Those two pair of animals, both the senior and junior champions, could stand up to quite a bit of competition."

There were 106 heifers entered in the show and 120 cows, according to state Holstein officials.

Penn Gate Beautician Clara, owned by Steve and Chris Wood, of Penn Gate Farm in Littlestown, was also the open class bred and owned animal of the show. Clara is an August 1988 Beautician daughter to Penn Gate Jetstar Clara.

The reserve grand champion was Solid Gold Rotate Easter, an April 1988 Arlinda Rotate daughter to Fair-Hill Sexation Eclipse-B, owned by Mike and Cindy Weimer.

Taking both the premier exhibitor and premier breeder awards was Gor-Wood-D Acres, of Mansfield, owned by Gordon and Dorothy Wood.

The Woods showed quite a few top placing cows in their classes and also took the top honors for

produce of dam, best three females, and the 100,000 pounds milk production class. The top 100,000-pound production animal was Gor-Wood-D Prophet Fayne. The Woods also showed an animal which captured third place.

Those class wins are important: the state Holstein Association sponsors the Spring Show, a regional show, and a Fall Show and awards points that can be used toward earning All-Pennsylvania status for a cow.

The open class junior champion was shown by Danielle Sparling, while Kyle Burdette showed the reserve junior champion.

Sparling's junior champion was Maple-Flat Ares Rosie, a winter yearling heifer sired by Lylehaven Ares.

Burdette's animal took second to Sparling's in the winter yearling class. Windy-Knoll-View Petrina-ET is a Blackstar daughter to his parents' well-known Windy-Knoll-View Ultimate Pala which did well on the circuit last year.

Youth division tallies are kept and winners recognized during the show. However, the distinction is made more through record keeping and animal entries, as the youth compete within the realm of the open show.

The youth division grand champion was also a five-year-old cow, C-Alnor Jet Mandy, a June 1988 daughter to Astro Jet daugh-



Gor-Wood-D Acres won both premier breeder and exhibitor banners which are held by, from the left, Ron Wood, and Gordon Wood. From the left, at the halters are Ted Wood, and friend Paul Moyer. On the right is Dennis Patrick, judge.

er owned by Beth Duncan. Mandy had placed sixth in the 5-year-old open division class competition, having to compete against the show's open grand and reserve grand champions.

The reserve grand champion of the youth division was a 4-year-old cow owned by David Day, Bendy Brook Odyssey Favorite, an October 1988 cow which also finished sixth in the open division class competition.

Danielle Sparling showed the junior champion of the youth division, while Dixie Doll showed the reserve junior champion.

Justin McMurray showed the best animal, bred and owned, in the youth division.

Holstein Association officials said they wanted to extend special thanks for helping to put on the show to Aliene "Dick" Thompson, Eldon Ford, Ben Wilson, Tracy Wellar, Jed Beshore, Art Salisbury, George Cashell, Leslie

Peters, Lesa Snyder and Sue Beshore.

This year's spring show also had a different twist: While the show was ongoing, concealed behind a dividing curtain, half of the arena was being converted into an indoor soccer ring.

At one time a wayward soccer ball did find its way onto the cow side, but was returned by a very young Holstein enthusiast. As soon as the show ended, work crews

(Turn to Page A22)

Get The **Spirit** THE ONLY OUT FRONT ZERO TURNING RADIUS MOWER MADE IN 30" TO 50" CUTTING WIDTH AT AFFORDABLE PRICES



Increase production with a new Spirit. The **QUINSTAR** Spirit ZT with exclusive Q Drive or hydrostatic drive and unique natural lever steering allows the operator complete control of the low profile full floating 30", 36", 42" or 50" mower deck. Deck height adjustment and all controls are easily accessible from the fully cushioned operator seat. Powered by an electric start B&S 12-hp I/C, 14 HP or 16 HP Vanguard engine mounted behind the operator. Available w/optional 4-bu. grass collection system. Spirit... an innovative outfront zero-turning-radius mower at an affordable price.

ASK ABOUT OUR FREE CATCHER OFFER

Experience a new Spirit at

One Of These Participating Dealers

**PENNSYLVANIA**

**BERKS CO.**

Charles E. Woolf  
Rte 501 PO Box 234  
Bethel, PA 19507  
717-933-4716

**CHESTER CO.**

O'Keefe's Small Engine  
Service & Sales  
Elverson, PA 19520  
215-286-0781

**CUMBERLAND CO.**

Yinger's Cub Cadet  
Sales & Service  
1781 Main St (Lisburn)  
Mechanicsburg, PA 17055  
717-691-7114

**FRANKLIN CO.**

Brand's Engine Service  
1751 Lincoln Way East  
Chambersburg, PA 17201  
717-264-4965

**LANCASTER CO.**

Lawn Care of PA  
PO Box 25  
Martindale, PA 17549  
215-445-4541

Wes Stauffer Engines  
& Equipment  
23 Pleasant Valley Rd  
Ephrata, PA 17522  
717-238-4215

**UNION CO.**

J.L. Peachy And Sons  
Rt 1 Box 172 Route 304  
Winfield, PA 17889  
717-966-0465

**DELAWARE**

**KENT**

Clarke's Garage of Smyrna  
552 South DuPont Hwy  
Smyrna, DE 19977  
302-653-7031

**NEW JERSEY**

**MONMOUTH**  
Gravely Tractor Agency  
RD #4 Box 12, Rt 9  
Freehold, NJ 07728  
908-462-0743

**NEW YORK**

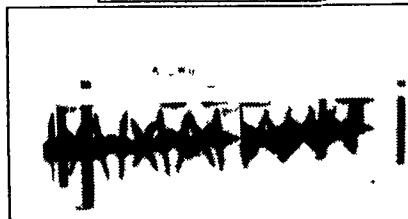
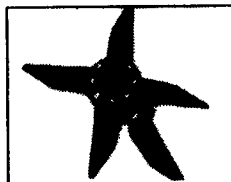
**SENACA**

Zimmerman's Small  
Engine Repair  
Aaron B Zimmerman  
3680 Watts Road  
Waterloo, NY 13165  
315-585-6382

~ ATTENTION ~  
DAIRYMEN & LIVESTOCK PRODUCERS  
A GOOD THING JUST GOT BETTER!  
★ NOW AVAILABLE WITH BOLT ON TEETH ★

FARMING FOR THE FUTURE with **Aer-Way**

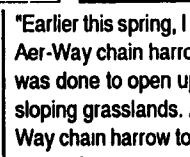
→ A new AERWAY can be your ticket to INCREASED PROFITS ←  
and help you comply to your conservation plan.



"This year we ran the Aer-Way over half the land where we had harvested corn silage. We then spread between 4,000-5,000 gallons of liquid manure per acre and disked the seed bed to prepare for small grains. We were absolutely amazed at the difference where we used the Aer-Way and one disking. My non-Aer-Wayed ground was disked 3 to 4 times and still wasn't as good. I would recommend the Aer-Way to other farmers as it softens the ground and lets rain and manure penetrate instead of running off."  
W.W. Sandford III -  
Kenwood Farm Orange, Virginia

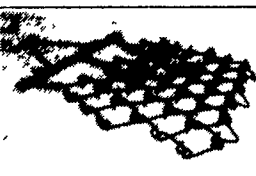
Helping Ranchers and Dairymen Make Better Hay and Pastures Throughout the Nation.  
UNIVERSITY TESTS SHOW

- AerWay-Ing Pays
- Increases yield and quality
- Important part of intensive hay and pasture management
- Helps conserve valuable soil, fertilizer and water.
- Reduces compaction
- Improves manure management
- Reduces run-off
- Promotes extended stand life



"Earlier this spring, I used the Aer-Way Implement and Aer-Way chain harrow on my rolling pastureland. This was done to open up the ground to get water into the sloping grasslands. At the same time I pulled the Aer-Way chain harrow to scatter the cattle manure around. Even after the dry summer we had, I noticed that the Aer-Wayed ground held the moisture better and we got thicker and taller regrowth where we ran the machine."  
Dr. Rex Wilhelm D.V.M., Stuart, Iowa

"I have better pastures since I started using the Aer-Way to aerate and renovate my pastures. Using the Aer-Way has helped me get the nutrients where they are needed. I would not recommend fertilizing or liming without running the Aer-Way first."  
Sandy Fisher, Brookview Farm - Beef Cattle Operation  
Manakin-Sabot, Virginia



**FLEXIBLE CHAIN HARROW**  
One of the heaviest in the industry.

- INTENSIVE GRAZING MAINTENANCE
- PASTURE RENOVATION
- SEED BED PREPARATION

Yes, please send me free information about your:

Flexible Chain Harrow

Aer-Way Implement

**AGRI-QUIP CORPORATION**

3920 MARKET STREET, CAMP HILL, PA. 17011

**1-800-228-8032**