

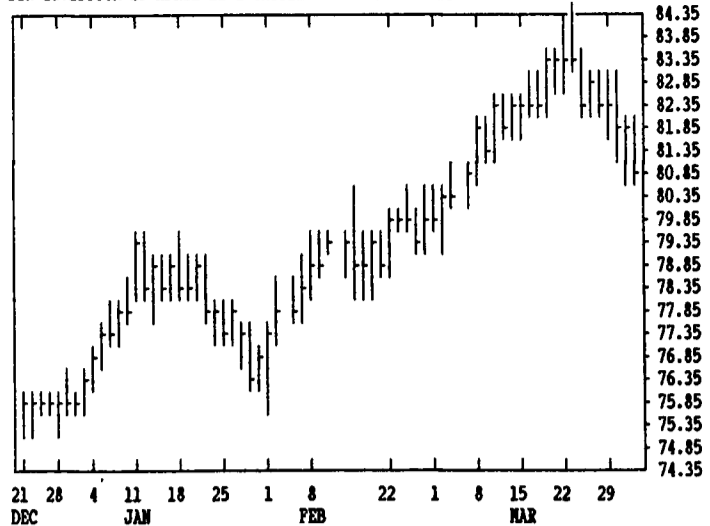
GRAIN, CATTLE AND HOG FUTURES MARKETS

(Closing bids: Thursday, April 1, 1993)

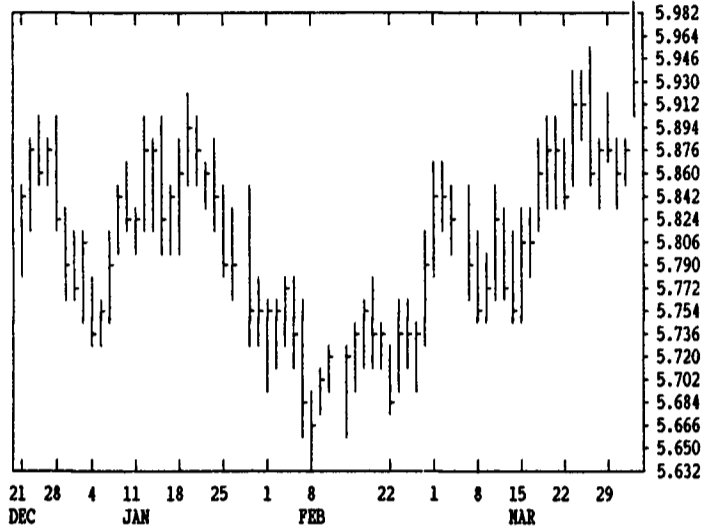
	Past Week's (3, 22-3, 26)			February's		Current	
	High	Low	Close	High	Low	Support	Resistance
NEARBY WHEAT	352.5	338.00	342.5	346.5	330.00	333.00	352.50
JUL WHEAT	314.5	302.75	304.25	327.00	313.25	301.00	314.50
NEARBY KCWHT	334.25	325.00	329.25	334.00	320.5	322.25	337.75
JUL KCWHT	309.00	298.5	299.00	323.25	309.5	294.00	310.00
NEARBY NGEWT	333.5	324.5	329.5	333.25	323.5	324.00	340.00
NEARBY CORN	251.00	224.00	228.75	222.00	218.25	204.50	237.00
JUL CORN	237.75	230.75	235.25	229.25	225.00	231.50	238.00
DEC CORN	247.5	241.75	245.00	242.00	237.5	237.50	248.00-268.00
NEARBY BEANS	595.00	584.00	587.5	581.00	567.75	560.00	595.00-637.00
JUL BEANS	600.5	588.5	592.75	585.00	572.5	575.75	612.00
NOV BEANS	609.5	598.00	601.25	592.25	581.00	585.50	619.00
NEARBY MEAL	186.7	181.9	185.8	180.3	177.00	175.20	192.80
NEARBY BNOIL	21.42	20.73	20.86	21.32	20.73	19.93	21.90
NEARBY LIVCT	84.30	82.40	82.625	80.50	78.40	76.375	85.00-88.00
JUN LIVCT	77.80	76.05	76.825	74.45	72.90	74.75	82.00
NEARBY FEDCT	86.725	85.25	85.60	84.80	82.45	82.25	89.00
NEARBY LIVHG	52.90	49.10	50.60	46.00	43.05	44.70	53.125-59.25
JUN LIVHG	57.00	53.925	55.975	51.30	48.25	50.55	57.00
NEARBY PKBLS	56.00	48.925	50.85	41.30	36.75	44.80	55.30

CORN				CHICAGO WHEAT				K.C. WHEAT			
HIGH	LOW	LAST	CHG	HIGH	LOW	LAST	CHG	HIGH	LOW	LAST	CHG
MAY 2314	2296	2300*	-2	MAY 3522	3470	3502*	+30	MAY 3344	3304	3320*	+12
JLY 2374	2352	2354*	-2	JLY 3134	3102	3116*	+14	JLY 3074	3046	3060*	+22
SEP 2416	2394	2396*	0	SEP 3160	3134	3152*	+26	SEP 3100	3070	3090*	+36
DEC 2466	2442	2450*	+4	DEC 3254	3234	3240*	+14	DEC 3176	3154	3164*	+14
MAR 2530	2510	2516*	+6	MAR 3290	3272	3276*	+6	MAR 3180	3166	3180*	+12
MAY 2570	2554	2554*	+10	MAY 3264	3264	3264*	+34	MINN WHEAT			
JLY 2600	2584	2590*	+6	OATS				MAY 3364	3326	3354*	+26
SEP				MAY 1452	1396	1410*	-24	JLY 3174	3150	3162*	+22
DEC 2504	2480	2486*	+12	JLY 1450	1400	1410*	-24	SEP 3092	3070	3084*	+14
SOYBEANS				SEP 1444	1400	1404*	-22	DEC 3170	3160	3164*	+6
MAY 5980	5916	5940*	+56	DEC 1462	1404	1426*	-20	MAR		3150*	0
JLY 6040	5972	5994*	+60	SOYBEAN MEAL				SOYBEAN OIL			
AUG 6060	5994	6020*	+62	MAY 1887	1870	1878*	+14	MAY 2124	2094	2120*	+32
SEP 6080	6024	6036*	+60	JLY 1897	1882	1889*	+14	JLY 2151	2122	2146*	+28
NOV 6136	6070	6086*	+64	AUG 1904	1892	1895*	+14	AUG 2158	2135	2155*	+30
JAN 6200	6144	6160*	+62	SEP 1913	1900	1903*	+14	SEP 2172	2147	2165*	+32
MAR 6274	6220	6224*	+54	OCT 1922	1907	1915*	+19	OCT 2180	2155	2170*	+35
MAY 6290	6254	6264*	+64	DEC 1945	1933	1934*	+13	DEC 2206	2175	2199*	+37
JLY 6310	6280	6294*	+50	JAN 1943	1938	1938*	+15	JAN 2210	2185	2202*	+40
NOV 6140	6100	6110*	+30	MAR		1942*	+14	MAR 2220	2195	2217*	+37

DTN LIVESTOCK 19 APRIL LIVE CATTLE CONTRACT HIGH: 84.30 LOW: 69.25



DTN GRAINS 23 MAY SOYBEANS CONTRACT HIGH: 6.684 LOW: 5.460



LIVE CATTLE					FEEDER CATTLE					LIVE HOGS				
HIGH	LOW	LAST	CHG		HIGH	LOW	LAST	CHG		HIGH	LOW	LAST	CHG	
APR 8192	8080	8100*	-85		APR 8555	8510	8530*	-25		APR 5080	4950	4970*	-77	
JUN 7635	7572	7590*	-35		MAY 8460	8422	8427*	-25		JUN 5677	5585	5602*	-20	
AUG 7285	7240	7247*	-32		AUG 8360	8325	8327*	-22		JUL 5500	5402	5412*	-20	
OCT 7377	7335	7345*	0		SEP 8237	8210	8210*	-7		AUG 5205	5110	5125*	-27	
DEC 7380	7340	7347*	-2		OCT 8215	8185	8195*	-10		OCT 4600	4550	4560*	-15	
FEB 7332	7280	7285*	-20		NOV 8225	8205	8205*	-25		DEC 4620	4530	4540*	-25	
APR 7425	7405	7420*	-5		JAN 8200	8180	8180*	-15		FEB 4542	4540	4542*	+17	
JUN					MAR 8140	8140	8140*	-10		APR 4425	4425	4425*	+5	

Marburger Farm Dairy

(Continued from Page A1)

ask about what's happening. Venerated by family, friends and community, Grandma represents the strength of life inherent in both the family and the dairy business. Her brother, Stanley McCandless, who is 93 years old, continues to farm, and if he should live to be 100 like his sister, will have lived in three centuries. The dairy is a survivor too. The

first retail sales were made in the early '30's on a door to door delivery route. As other small dairies went out of business, Marburger's expanded to take up the slack. Now the plant processes 68,000 gal. of whole and low fat milk each week and accepts milk from 63 other farms besides their own herd of 140 registered Holsteins. Milk from their shippers is also delivered to the Wilmington Cheese

Plant and the Titusville Dairy for processing into foods such as sour cream, cottage cheese, yogurt, and ice cream mixes. The dairy has a 65 percent Class 1 utilization and does not usually lose shippers unless they go out of business.

The dairy also sells drinks and juices, and these products are manufactured every Wednesday.

Forty-four trucks are on the delivery routes, at least half of which make home deliveries to 8,000 customers. Mom and pop groceries are served, as well as several larger chain-type stores. The milk is offered in schools in Butler County and some in Allegheny County, providing a nice wholesale business for nine months of the

year.

The family-owned dairy has been built on a reputation of quality products and empathy for the farm producers who ship milk to the dairy. Whenever possible, they like to buy inputs from their local businesses.

Martin Marburger, 73, still takes an active part in the business, but son and daughter Jim Marburger and Marge Wearing are the principal managers of the operations.

The farm that is part of the operation has been in the Marburger family for 145 years. At first it was a livestock farm that featured Belgian and Percheron horses. Later when the dairy was founded, a landmark bank barn was built,

reputedly one of the largest in Pennsylvania. The barn was 88' x 138' and measured 52 feet from bottom to peak. The four barn floors were large enough to pull in loads of hay and straw and circle the wagons to come out again.

The lower stable housed 115 stanchions, a row of box stalls. At the time the 87 milk cows and all the young stock and dry cows could be housed in this barn.

Unfortunately, on August 8, 1979, an electrical fire lit out across the straw mow, and the beautiful historic structure burned to the ground in 20 minutes. The cows were out in the pasture, and with the help of the milk tester,

(Turn to Page A26)



Jim Marburger is one of the principal farm dairy managers.



This beautiful landmark bank barn on the Marburger Farm Dairy was destroyed by fire in 1979. The historic structure measured 88 feet wide, 138 feet long, and 52 feet high. It contained four barn floors large enough to circle wagons.