

Carlisle Livestock Market

Carlisle, Pa.
 Tuesday, March 30, 1993
 SLAUGHTER STEERS: SELECT TO LOW CHOICE 72.50-77.25.
 SLAUGHTER HOLSTEINS: CHOICE 68.00-71.00.
 SLAUGHTER HEIFERS: SELECT AND LOW CHOICE 70.00-75.00.
 SLAUGHTER COWS: ACTIVE! BREAKING UTILITY AND COMMERCIAL 50.00-56.00; CUTTER AND BONDING UTILITY 48.00-54.00; CANNER

AND LOW CUTTER 42.00-47.00; BIG MIDDLE 45.00-48.00; SHELLY 41.00 AND DOWN.
 SLAUGHTER FAT BULLS: YG#2 53.00-59.00.
 FEEDER STEERS: 500-750 LBS. MEDIUM AND LARGE #1 78.00-84.00; MEDIUM AND LARGE #2 70.00-76.00; HOLSTEINS 64.00-68.00.
 FEEDER HEIFERS: ALL WEIGHTS MEDIUM #1 88.00-89.00; LARGE #1 72.00-84.00; HOLSTEINS 61.00-66.00.
 FEEDER BULLS: 700-900 LBS. MEDIUM #1 68.00-72.00; MEDIUM AND LARGE #2 59.00-64.00.

VEAL CALVES: CHOICE 90.00-105.00; GOOD 75.00-90.00; STANDARD 50.00-70.00; LIGHT/WEAK 50.00 AND DOWN.
 HOLSTEIN FARM BULLS: OVER 95 LBS. TO 162.00.
 HOLSTEIN FARM HEIFERS: 145.00-182.50.
 HOGS: BARROWS AND GILTS US#1-3 210-260 LBS. 43.50-44.00; OVER 270 LBS. 36.50-40.00; #2&4 40.25-42.50.
 SOWS: OVER 450 LBS. 39.00-42.00; OVER 450 LBS. 33.00-38.00; #2&4 ALL WEIGHTS 28.00-31.00.
 BOARS: OVER 300 LBS. 29.00-32.00.
 FEEDER PIGS BY THE HEAD, STRONG DEMAND! 30-50 LBS. 29.00-52.50.
 SHEEP: 19.00-51.00.
 LAMBS: CHOICE 30-50 LBS. 89.00-105.00; CHOICE 75-110 LBS. 75.00-89.00; GOOD 70-110 LBS. 65.00-85.00.
 GOATS: BY THE HEAD, SM/MED/ KIDS 30.00-70.00.
 SALE EVERY TUES. RABBITS AND EGGS 5 P.M. LIVESTOCK 7 P.M.
 STATE GRADED FEEDER PIG SALE THURSDAY, APRIL 8, 1:30 P.M.

Lancaster Farming, Saturday, April 3 1993-A15

Keister's Middleburg Auction

Middleburg, Pa.
 Tuesday, March 30, 1993
 Report Supplied by PDA

CATTLE 568... PDA . Compared to last Tuesday's market: Sl. steers mostly 1.00 to 1.50 lower; Cows 2.00 lower. STEERS: Choice 1000/1450 lbs. 78.00-83.50, Select 69.00-77.50, few Utility 55.00-61.50. HOLSTEINS: Choice 70.00-73.50, one 74.25, Select 65.00-68.50. HEIFERS: few Choice 74.00-82.50, few Yield Grade No. 4-5, 69.50-72.00, few Select 62.00-70.00. COWS: Breaking Utility and Commercial 46.75-50.00, Cutter & Bon. Utility 46.50-51.25, Canner and Low Cutter 40.00-46.00. Shells down to 35.00. BULLOCKS: few Select & Choice Holsteins 65.00-69.50. BULLS: Yield Grade No. 1 950/1820 lbs. 58.00-65.00, few No. 2 915/1400 lbs. 55.00-58.50. FEEDER CATTLE: few Medium and Large Frame No 1 400/650 lbs. steers 61.00-75.00.

CALVES 206..Holstein Bulls 20.00 to 30.00 higher. VEALERS: Utility and Low Standard 55/85 lbs. 37.50-50.00. RETURNED TO FARM: Holstein bulls No. 1 90/130 lbs. 130.00-167.50, No. 2 85/125 lbs. 75.00-125.00, few down to 60.00. Holstein heifers No. 1 85/120 lbs. 125.00-197.50. Few Beef cross 75/100 lbs. bulls and heifers 115.00-171.00.

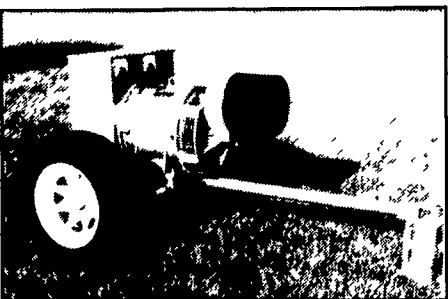
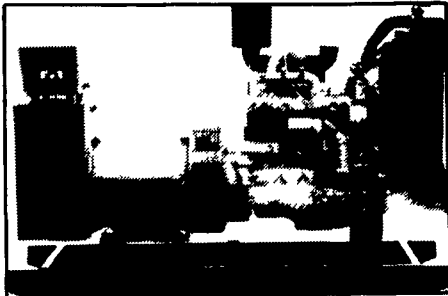
HOGS 543...Barrows and gilts 2.00 lower. BARROWS AND GILTS: US No. 1 225/250 lbs. 46.00-47.75, few 49.00, No. 1-2 220/250 lbs. 43.50-45.75, 1-3 200/300 lbs. 38.00-43.25. SOWS: 1-3 300/650 lbs. 38.00-43.75, 1-3 300/600 lbs. 33.00-37.75. BOARS: 32.50-34.50.

FEEDER PIGS 176...US 1-3 25/40 lbs. 34.00-42.00, few 45/50 lbs. 49.00-53.00. - all per head.

SHEEP 160...Choice 20/35 lbs. Spring sl. lambs 95.00-122.50, 40/100 lbs. 70.00-82.00, few Choice and Choice 60/110 lbs. Woolled sl. lambs 43.00-51.00. Slaughter sheep 15.00-25.00

GOATS 82... Large 34.00-65.00, Small Kids 23.00-41.00 ---- all per head

GENERATORS



AUTOMATIC and MANUAL SYSTEMS

DIESEL
 L.P. GAS
 NAT. GAS
 NEW & USED

LEROY SOMER PTO ALTERNATORS

BRUSHLESS
 INDUSTRIAL GRADE
 11 to 60 KW

READY FOR THE NEXT STORM?

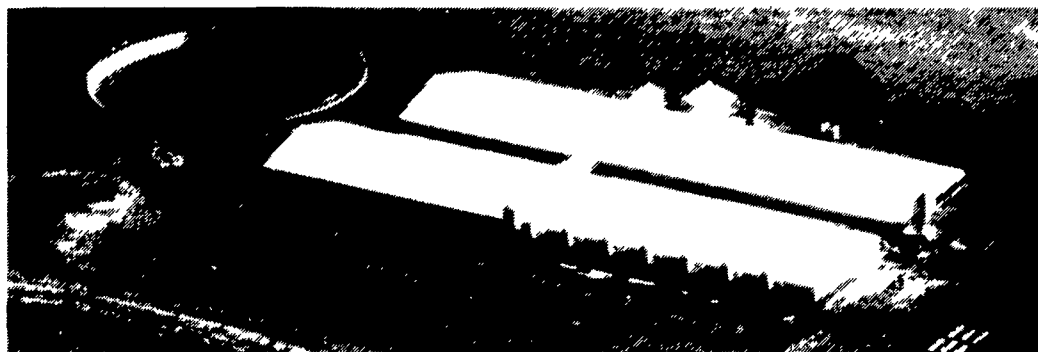
For Sales and Service Call The People Who Know Generators

MARTIN ELECTRIC PLANTS

280 Pleasant Valley Rd., Ephrata, PA 17522-8620
 Tel: 717-733-7968 Fax: 717-733-1981



SWINE - POULTRY - LIVESTOCK SYSTEMS



Recently Completed 1200 Sow Unit

FARM INCOME SPECIALISTS

Tri-County can assist you in planning a facility to meet your needs including cash flows, production contracts, financing, nutrient management planning and permits.

DESIGN AND CONSTRUCTION

Computerized estimating and drafting for all your construction equipment needs. Renovations and new construction packages - large and small.

SERVICE

We offer a specialized staff to handle all your repair and service needs. Emergency repairs are available 24 hours a day.

PARTS

We inventory a large selection of parts available for immediate pickup or U.P.S. delivery.

Call Tri-County for all your swine, poultry & livestock facility needs. We offer a complete line of quality products and services for today's producer at a price you can afford.

PICKY. PICKY. PICKY.

YOU JUST CAN'T MATCH OUR MIX



OSWALT
 Mixers by J-STAR

TMR Ruffage Master

These new Oswalt® four auger Model 200/250 mixers are designed to process and mix all feeds, including baled hay, into a fully-blended TMR...better than anyone!

The aggressive, notched, 20"-diameter, full-pitch, four auger mixing pattern, dual shear shelf design and exclusive, self-lubricating Tuff-Glide® liners help feed materials flow more freely, reducing horsepower requirements and virtually eliminating material hang-ups and dead spots.

Pick Your Best Payment Plan.

MORE WAYS TO BUY THE BEST	7.9% 24 or 36 Months	0% 12 Months	7.9% 36 Months LEASE	BIG CASH DISCOUNTS
----------------------------------	--------------------------------	------------------------	--------------------------------	---------------------------

See your Oswalt Dealer today!

LAPP'S BARN EQUIPMENT

5935 OLD PHILADELPHIA PIKE, GAP, PA 17527

PHONE: 717-442-8134

WE SERVICE WHAT WE SELL

— Radio Dispatched Trucks —



aerotech
 Ventilation Systems And Controls

GSI Grain Systems, Inc.
 Galvanized Feed Bins, Flex Flow Augers And Sow Feeding Systems

Cumberland
 Poultry Feeding Systems



TRI-COUNTY

CONFINEMENT SYSTEMS, INC.

608 E. Evergreen Rd., Lebanon, PA 17042

Hours: Mon.-Fri. 7:00 to 4:30; Sat. 8:00 to 12:00

Ph: 717-274-3488

