

TRUCKCRAFT



PICKUP INSERT DUMPER
For FREE brochure & prices, call toll free 24 hr.
1-800-755-3867

Royal Truck & Equipment Inc.

6910 Route 309 Coopersburg, PA 18036

(215) 282-4090
(800) 283-4090

Just Off I-78, Between
Allentown & Quakertown
Financing Pre-Approved



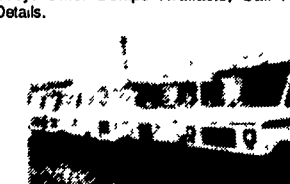
1985 Ford LN8000 24' Stake Body, New 3208 Cat Diesel, 5/2 Spd., PS, 28,000 G.V.W., Nice Truck



84 Int. Dump Truck, S-1724, 345-V8, 5/2 Spd., Air Brakes, 46,000 Original Miles, 12' Body. Other Dumps Available, Call For Details.



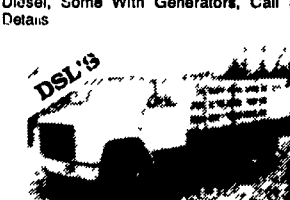
1980 Ford F700 Cab & Chassis, 3/4 V8, 5 Spd., 2 Spd., 156" CA, 24,500 GVW.



Aluminum Step Van In Stock Over A Dozen To Choose From, 10 to 18 Feet, Gas or Diesel, Some With Generators, Call For Details



1985 Ford F700 14' Stake Dump, 370, 5 Spd., 2 Spd., PS, PB, 38,000 Orig Miles, In Like New Condition.



1986 IHC S1600, 12' Stake Body, 6.9 Del., 4 Spd., PS, PB, 17,400 GVW, 46,800 Orig Miles, US Govt. Maintained.

TWO ACRES OF ALL TYPES USED TRUCKS.
"IF WE DON'T HAVE IT, WE'LL GET IT"

1986 CHEVY BLAZER 4x4
Silverado, 350, AT, AC, PW, PDL,
97,000 Mi., Excellent Cond. \$7,000
CALL EVENINGS (717) 367-3309

"FREE CATALOG"
CALL OR WRITE



HOURS: Mon.-Fri. 9-6
Saturday 9-2
Sunday - Closed

DIRECTIONS TO OUR MIDDLETOWN STORE- On your road map, we are on Route 230 mid way between Middletown & Elizabethtown. Take the Toll House Rd. exit off Rt. 283, turn and go to stop at Rt. 230, go east on 230 1-1/2 ml. on the right.

DEPARTMENT L F
4294 EAST HARRISBURG PIKE
MIDDLETOWN, PA 17057

(717) 944-0318



4x8, 5x10, 6x12 UTILITY TRAILERS STARTING AT \$499



ALL TRAILERS BUILT "IN OUR SHOP"



CAR HAULER AS LOW AS \$1,474

STANDARD FEATURES - 16" DIAMOND STEEL DECK, BOX TUBE FRAME, JACKS, CHAINS, ALL WHEEL ELEC. BRAKES & MORE. USE YOUR OWN WHEELS/TIRES & SAVE \$225 OFF OUR LOW PRICE OF \$1,699. WOOD DECK AVAIL.



"TRAILER PARTS"
ANGLE & CHANNEL IRON, BOX TUBING, LIGHTS AXLES, COUPLERS, WIRING, CHAINS & TIEDOWNS, Etc., Etc.



CLASS III HITCH RECEIVER
10,000 Lb. MGTWR, In Stock For Most Domestic & Import Pickup Trucks & Vans FOR MOST POPULAR FORD CHEV & DODGE PICKUPS and FORD EXPLORER KIT OTHER APPLICATIONS UP TO \$99.95

\$79.95

AUTOBODY PARTS, PAINTS & SUPPLIES



- 73-79 CHEVY, FORD, TK FENDERS \$39.95-\$49.95
 - BODY FILLER-CASE OF 4-GAL \$33.95
 - ACRYLIC ENAMEL PAINT AS LOW AS \$28.95
 - URETHANE HARDENER DOES A GAL. \$12.95
 - SANDPAPER-6" DA SELF ADHESIVE, 100 PER ROLL LOW AS \$16.50, ALSO DRY BACK DA, WET & DRY SHEETS, LONG FILE!
- 100% OF OTHER ITEMS AT BIG SAVINGS!!

Golden's #1 wants your truck business...and we're ready to work hard to prove it!

KAISER/JEEP 1 1/2 TON 4x4 MAINTENANCE TRUCK

Front Winch, 6 cyl. Engine 8 Speed Trans. Equip with 300 Amp Hobart Welder, 7.5 KW Generator. Single or 3 Phase. Air Compressor. Aluminum Locking Cabinets
\$11,500.00
814-834-1018 St. Marys, PA

- 1990 Dodge Ram 350 15 Pass., Maxi-Van, V8, AT, Dual, AC, CR, Tilt, Black, 153,000 Mi. \$7,600
- 1989 Ford Club Wagon XL, 15 Pass., Maxi-Van, V8, AT, Dual AC, CR, Tilt, AM-FM, Red/White, 57,900 Mi. \$10,800
- 1989 Geo Spectrum 4 Dr., 4 Cyl., AT, AC, AM-FM Cass., Red, 65,500 Mi. \$3,800
- 1989 Pontiac Grand AM LE, 4 Dr., Quad 4, 5 Spd., AC, CR, Tilt, AM-FM Cass., White, 57,000 Mi. \$6,500
- 1989 Pontiac Grand Prix V6, AT, Loaded, Blue, 58,500 Mi. \$6,900
- 1988 Chevy Astro CS 8 Pass., V6, AT, AC, Tilt, AM-FM, White, 56,900 Mi. \$7,800
- 1988 VW Jetta GL, 4 Cyl., 5 Spd., AC, CR, PW, AM-FM Cass., Sunroof, Black, 62,800 Mi. \$3,900
- 1988 Toyota Celica Supra, 6 Cyl., 5 Spd., Loaded, Gray, 58,800 Mi. \$7,900
- 1987 Ford Ranger STX, V6, 5 Spd., Loaded, Lift Kit, Blue, 70,600 Mi. \$7,600
- 1987 Chevy S10 Sport Ext. Cab, 4x4, V6, AT, AC, CR, Tilt, AM-FM Cass., Black/White, 63,000 Mi. \$7,900
- 1985 VW Vanagon 9 Pass, 4 Cyl., AT, AM-FM Cass., Tan, 88,600 Mi. \$3,900

Brubaker's Auto Sales
Myerstown, PA
717-866-5237



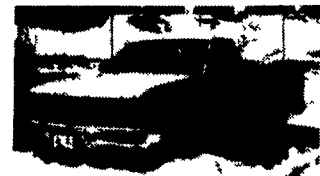
'93 CHEVY EXT. 1 TON VAN 5.7L, AM/FM, Glass Package, 8600 GVW, Summit White



'93 CHEVY HD3500 CAB & CHASSIS, 6.5L Turbo-charged, AT, 185" Wheelbase, 31 Gallon Fuel Tank, 15,000 GVW



'93 CHEVY P CUTAWAY, AT, 5.7L, Radio, 14 Ft. Body with Flat Floor, Roll-Up Door, Summit White



'93 CHEVY C-2500 UTILITY BODY, Phoenix 2000 Ut. Body, 8600 GVW, 5.7L, AT, AM/PM, H.D. Everything, Summit White



'93 CHEVY H.D. EXT. CAB FLEETSIDE PICKUP 4WD, 6.5L Diesel, AT, Rear Step Bumper, Locking Rear, Roof Markers, HD Trailer Pkg., AC, Summit White



'93 CHEVY C-2500 PICKUP 5.7L, AT, AC, AM/FM, Summit White



'93 CHEVY ASTRO EXT. CARGO VAN, AT, V6, 4 3L, AC, 2 Person Seating, \$1600 Andrian Shelving Pkg., Install. Incl., 2 To Choose From!



'93 CHEVY C-2500 PICKUP 5.7L, AT, AC, AM-FM, Summit White



Reputation: We may be Reading's newest Chevrolet dealer, but we bring over half a century of experience and a reputation of providing the best in Pennsylvania's transportation services. Now truck owners can get that same dependability and reliability!



Working Trucks: We keep your work trucks working by offering Saturday service from 8am-4 pm. Now you can have your fleet maintained while your company rests-you'll save big with little or no downtime.



Fleet Pricing: You don't have to order 10 or more trucks to get fleet pricing at Golden's #1. In fact, if you're buying the truck for your company, even if it's only 1, you'll get fleet pricing that will save you \$\$\$\$. Let us bid on your next vehicle and we'll prove it!



Trained Truck Specialists: If you buy a work truck from a car salesperson, you might end up with the wrong truck. Our truck specialists are trained to make sure the truck you buy will do the job you need done - no more, and certainly no less...

For all your truck needs, call Bob Seltzinger, our commercial truck manager, today at (215) 374-8600
We're looking forward to hearing from you!



401 Lancaster Ave., Reading • (215) 374-8600

YES! We Have Evening & Saturday Service!