

**REFRIGERATED TRUCKS FOR SALE**

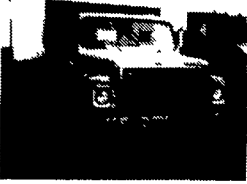


Can Be Used For Cold Storage Inside Or Outside 14'-22' Boxes Starting \$3500 And Up  
**201-663-0243**

**R & R CAR AND TRUCK CENTER**



78 FORD LN8000, 3208 Cat, 210 HP, P/S, A/B, 5 & 2 Spd., 35,000 GVW, 18' Platform Dump  
Call For Details



85 IHC S1954, Tandem Axle, 20' Platform Dump, 50,000 GVW, Low Miles, Twin Cyl Hoist, Clean  
Call For Details

- (8) STORAGE VAN TRAILERS
- (1) 22 FT. PLATFORM STAKE
- 16 FT. - 22 FT. VAN BODIES AVAIL.

CALL RAY LEED:  
**(717) 560-4901**

**YES!! ENGLE FORD DOES MAKE IT EASIER!!**

Over 100 New & Used Trucks, Vans & 4x4's

- 1989 F250 4x2 XLT, 351, V8, Auto Trans, A/C, Heavy Hauler
- 1989 Chevy Crew Cab SRW, 4x2, 350 V8, AT, 32,000 Miles
- 1990 Chevy 3500 Cab & Chassis, DRW, 4x4, A/C, V8, 5 Spd.
- 1988 Ranger XLT, Super Cab, 4x4, V6, A/C, 5 Spd.
- 1989 Bronco II XLT, V6, 5 Spd., AC, Power Equipment
- 1991 S-10 Super Cab, V6, 5 Spd., 4x2 51,000 Miles
- 1989 F350 Crew Cab DRW, XLT, 460 V8, A/OD, Power Equipment, Cruise & Tilt
- 1989 Ford Conversion Vans, Quad Chassis w/Rear Seat Bed, F&R A/C & Heat, V8, AT, 3 to Choose.
- 1990 F250 4x4 Super Cab, XLT, 460 V8, 5 Spd, Power Windows/Locks
- 1987 F350 Crew Cab, XLT, AC, AT, Power Equipment
- 1990 F250 4x4 V8, AC, Auto Trans, Work Ready, 19,000 Miles.
- 1987 Aerostar XL 7 Passenger, V6, A/OD, AC, Cruise & Tilt
- 1989 Ranger XLT, AC, 5 Spd 2.3L, 30,000 Miles, Blue & Silver.
- 1989 Ford Conversion Van, V8, AT, FR & RR A/C & Heat

**ENGLE FORD, INC.**

Rt. 147 North  
Millersburg, PA 17061  
The Call's On Us 1-800-242-8075  
1-717-692-4841

'91 Ford F150 XLT Lariat pickup, 300 EFI, 5 spd., PS, PB, air, AM-FM, dual tanks, 31,000 miles, charcoal w/balance of factory warranty, excellent condition, \$9,950. 717-733-2873

Fertilizer lime truck, Stoltzfus boom type spreader, dual lock-in axle, excellent condition. 814-364-2126 Days 8-5; 814-422-8166 Eves.

FOR SALE: 1986 C-30 Dually 454 engine gooseneck trailer, equipped 11,000# GVW, \$5950 717-359-7460.



1978 Ford LN8000, Cat 3208, 5 Speed 2 Speed Rear, 1000 Gal. Poly Tank, Hydraulic Booms, Rinse Tank, Good Condition

**REDUCED TO \$11,000**  
**CALL 717-397-0035**

**FISHER'S TRAILER SALES**

**HORSE STOCK UTILITY**

**Aluminum and Steel Financing Available**

Stock Trailers starting at \$2250 4 wheel brakes  
2 Horse starting at \$2750 4 brakes, manger w/tack space T-Divider

Used Horse and Stock trailers starting at \$650

**SPECIALS:**

- '82 Moritz BP 10x6 stock surge brakes, new floor \$1,000
  - '87 Ponderosa GN 20x7 plywood line 6000# axles \$3,300
  - '93 Ponderosa Gn 3-horse slant w/dress room, rear tack saddle tree Charcoal Pa. set-up white wheels \$4900
  - '93 El Paso Bp 3-Horse slant w/dress room, 7' tall rear tack, saddle tree, Pa. set-up Maroon, white wheels \$4,000
  - '78 Chapparral Gn 16x6 plywood lined mats, new paint \$2,500
  - '83 WW Gn 20x6 plywood lined mats 5200# axles \$1800
- Delivery time 2-5 weeks. Temp. Tags, Notary, Hitches and Trailer parts available.

Open 7 days a week by appointment or chance  
RD #2 McVeytown, Pa. 17051 Strodes Mills Rt. 22  
**(717) 242-0941** Turn onto Middle Rd. 1/4 Mile

**FOR SALE: COMPLETE MILITARY VEHICLE COLLECTION!**

- (1) 1941 - 1/2 TON DODGE 4x4 AMBULANCE; runs great, lockouts, 5 brand new non-directional tires, need body, (have doors & fr. fenders)
  - (2) 1941 - 1/2 TON DODGE 4x4 TRUCKS; ea. is 90% complete, both motors are free, great for parts or restore
  - (1) 1941 - 1/2 TON DODGE 4x4 TRUCK; disassembled, body parts in great condition, 4 good tires, has a bad frame
  - (1) 1941 - 1/2 TON DODGE 4x4 RUNNING GEAR; good condition
  - (1) 40's TRUCK (1 1/2 TON) CIVILIAN, CAB & FRONT SHEET METAL IS GOOD, HAS MOTOR & TRANS. WITH P.T.O.
- ALSO: A load of parts, extra axles, transmissions, transfer cases, lights, etc.

**\$3,800 - THIS PRICE TAKES EVERYTHING (I'M NOT INTERESTED IN PARTING OUT)**

Call **KEN JOHNSON**  
@ 717-786-7837 after 6:00 PM  
Leave Message - Will Return Call



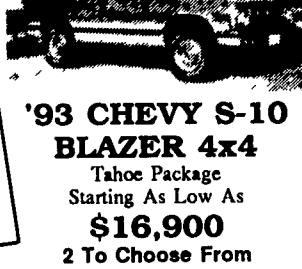
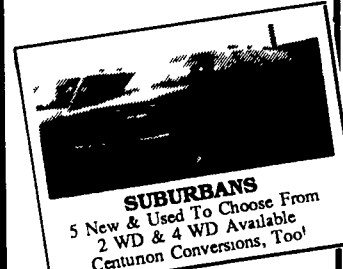
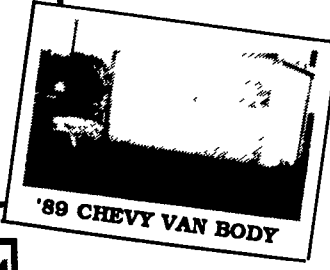
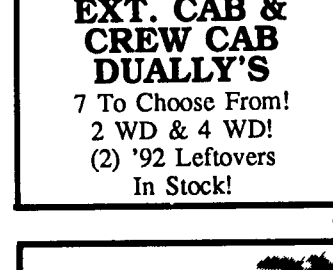
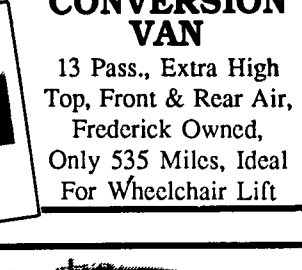
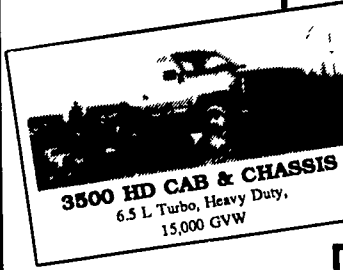
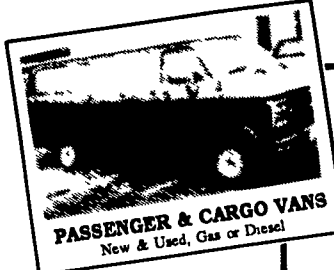
- 1985 RST688 LST - 350 Mack, T2100 Trans., Nuway Air Ride, Asking \$25,000.00
- 1985 Great Dane Reefer, 45'x13 1/2' x96", SBI Unit, Asking \$11,500.00
- 1985 Mack + 1985 Reefer Combination, Asking \$35,000.00
- 1981 Fruehauf flatbed, 42' w/aluminum floor & steel frame, new tires and brakes, asking \$6,500
- Spider w/air-cooled engine, asking \$6,000
- 1981 Fruehauf flatbed + spider combination, asking \$11,000
- 1985 Great Dane Van, 48'x13'6"x102" w/Plywood Lining & Oak Scuffboard \$7,500.00 OBO
- 1975 Trailmobile 40' Flatbed, Complete Rebuilt Tandem and Floor, Asking \$3,500.00
- 1976 Dorsey Van 45'x13'6"x96" FRP w/Vents, Asking \$2,750.00
- 1977 Fruehauf Van 45'x13'6"x96" Alum. w/Vents, Asking \$2,750.00.
- 1981 Halb Knuckle Boom, Self Contained, Has 23' Reach, Asking \$6,500.00.

Call Day (302) 934-8506  
Nights (302) 934-7718  
Ask for James Bartleson



*Frederick*

**THE TRUCK PLACE**



**SUBURBANS • HI CUBES • CREWCABS • DUMP TRUCKS • ROLLBACKS**

**IF WE DON'T HAVE IT, WE'LL LOCATE IT!**

*Frederick*

1505 Quentin Rd.  
Rt. 72 - Lebanon  
**SALES HOURS:**  
Mon.-Fri. 9-9  
Sat. 9-5

**The SUPERMARKET OF TRUCKS**

**(717) 274-1461 • PA (800) 222-5523**