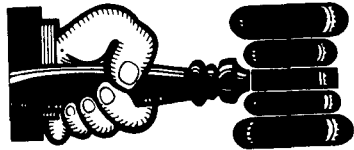


**Public Auction Register**

Closing Date Monday 5:00 P.M.  
of each week's publication

SAT. DEC. 11 - Arnold's State Graded Feeder Pig Hog production sale - Lebanon Area Fairgrounds, Harry H. Bachman, auct.  
FRI. DEC. 31 - 1-30PM, Sale Located At Carlisle Livestock Market, Inc., Exit 13, South Off I-81, Left Onto Alexander Spring Road. 717-249-4511.



**AUCTIONEER'S DIRECTORY**

**DEALER IN ALL KINDS OF LIVESTOCK**

Also Crippled & Down Cattle

**MARLIN S. IRWIN**

Quarryville, PA  
PH: 717-786-3016

**NOTICE**

To assure that your Public Sale appears in the Public Sale Section we must have your advertisement by 5 P.M. Tuesday of each week's publication.

**R. CARL PICKEL**

Auctioneer & Appraiser

AU-003040-L

APT. 231  
831 CLEARVIEW AVE.  
EPHRATA, PA. 17522  
717-733-6286

**TOP PRICES FOR ALL TYPES OF CATTLE - Also Down & Crippled Cattle**

**MULVANEY LIVESTOCK SERVICES**



Tom Mulvaney, Jr.  
Easton, PA  
(215) 258-1670



In NJ-Warren, Sussex And Hunterdon Counties

**NOW IN NEW YORK - ORANGE COUNTY**

In PA-Northampton, Bucks, Lehigh, Berks And Schuylkill Counties

★ All Cattle Paid On Hanging Dressed Weight

**SALE EVERY TUESDAY**

Graded Sale  
1st Tuesday each month  
2 P.M.  
Horse Auction  
2nd Saturday each month  
1 P.M.

**FAUQUIER LIVESTOCK EXCHANGE**

Marshall, Va.  
703-364-1566

**Dairy and Livestock Sales**

**NEW HOLLAND SALES STABLES, INC.**



New Holland, Pa.  
Located 12 Miles East of Lancaster, just off Rt. 23

**WEDNESDAY, MARCH 31, 1993**

**HEIFERS & BULLS 11:00 A.M.**  
**FRESH COWS & SPRINGERS 12:00 NOON**  
**AND HERD DISPERSAL**

**SEVERAL GROUPS OF HEIFERS - OPEN AND SHORTBRED**

- 1 GROUP OF REGISTERED HEIFERS FROM UPSTATE PA. FRESH AND CLOSE INCLUDING:
    - 2 Yr. WILLOW HILL ALGONQUIN, fresh milking 70 lbs. Her Dam GP Gr. Dam EX 93EE records to 31,760 - 1143F and EX Man.
    - HANOVER HILL DESIGNER just fresh fancy udder.
    - Nice VALIANT TED due April.
  - 1 load of Canadians for ROY JOHNCOX including 15 Heifers from 1 dairy, 8 breeding age, 4 shortbred and 3 small calves.
  - SPECIAL MENTION - 4 INSPIRATION Daus.**
    - 1) 4 yr. classified GP 4 yr. 20,291M and 3.9 Test. Dam VG with 23,089 +3.3T.
    - 2) 4 yr. old 19,228 4.2T
    - 3 & 4) Both 3 yrs. due April with 15,000 and 16,000 MIL-R-MOR VAL-UE dau 2 yr. 17,404M 4.6T 3.4Pr. Her SHEIK Dam 4.1T
    - CHERRY LANE SUPER STAR dau. 18,928. Dam TELSTAR DEALAC with good records.
- More Purebreds and Grades with 20,000 records due April.

Sale Managed By

**New Holland Sales Stables, Inc.**

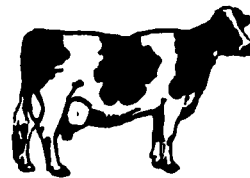
Barn 717-354-4341

Fax 355-0706

**Norman & David Kolb, Mgrs. 61L**

717-397-5538

**HOLSTEIN DAIRY HERD DISPERSAL**



**RIVER VALLEY FARM**  
**WED., MARCH 31, 1993**  
At New Holland Sales Stables  
Just Off Rt. 23, New Holland, Pa.

22 cow dairy with 11 cows strictly FRESH, 4 springers due April, 7 nice young cows due July, Aug. 50% registered, balance ID grades. Cattle are quiet and gentle from tie stall barn where the Mrs. did all the milking. Fancy udders, tall and sharp. Ready to go home and work. Pregnancy checked at sale barn, vaccinated with Horizon 9.

Represented by  
**John H. Wetmore**  
RD #4 Honesdale, Pa. 18431 Wayne Co.  
717-253-5329

Sale Managed By

**NEW HOLLAND SALES STABLE**

717-354-4341

FAX 717-355-0706

**NORMAN & DAVID KOLB 61L**

**MILK. IT DOES A BODY GOOD.™**

**HFA HORNING**

Farm Agency, Inc.

Alvin Horning Bus. (215) 286-5183  
Merle Eberly Res. (215) 775-3745

Real Estate • Auctions • Appraisals

John D. Stauffer

**Auctioneers**

1484 Mountain Road, Manheim, PA 17545

Fulltime Courteous Professional Auction Service Since 1976

Real Estate • Farm Equipment • Antiques  
Personal Property • Livestock  
Phone 717-665-5099

**KREIDER, KLINE & GOOD**

COMPLETE PROFESSIONAL AUCTION SERVICE

**REAL ESTATE - FARMS & RESIDENTIAL**  
PERSONAL PROPERTY - ANTIQUES -  
FARM STOCK SALES - LIQUIDATIONS

RANDAL V. KLINE  
AUCTIONEER-REALTOR  
717-733-1006

LLOYD H. KREIDER  
AUCTIONEER  
717-786-3394

ROY E. GOOD, JR.  
AUCTIONEER  
215-445-4309

**ROGERS COMMUNITY AUCTION INC.**

Located 8 Miles East Of  
Lisbon, Ohio Or One Mile West Of  
Rogers, Ohio On St. Rt. 154.

**FRIDAYS**

Produce, Egg, Miscellaneous Auction  
Starts At 6 P.M.

Poultry Auctions Start At 6 P.M.

Doors Open At 7:30 A.M.

To Accept Consignments

Open Air Market All

Day And Evening

Doors Open At 7:30 A.M. To Rent  
Market Spaces. Over 2.5 Miles Of  
Outside Concessionaries And 30,000  
Sq. Ft. Under Roof.



**WEDNESDAYS**

Farm Machinery

Consignment Auction



The 1ST WEDNESDAY EVENING  
OF EACH MONTH  
at 4 P.M. sharp.

We are open the preceding Tuesday of  
each sale day to check in consignments  
from 8 A.M. to 8 P.M. Handling farm  
machinery, lawn and garden equipment,  
tools, fire wood, cut lumber and related  
miscellaneous items. Five auctioneers  
operating simultaneously.

Hay And Straw Grain

EVERY WEDNESDAY

selling truck

load lots by the bale or ton

starting at 1 P.M.

Barn Opens at 8 A.M. to Consign

Jim and Ken Baer

Auctioneers and Managers

Phone (216) 227-3233 or (216) 227-3236

"Sales Every Week Since 1955"

**PAUL E. MARTIN AUCTION SERVICE**

Paul E. Martin Aaron E. Martin  
717-733-3511 717-738-4168

Ephrata, PA

**SPECIALIZING IN**  
**Farms - Farm Equipment**  
**Dairy Dispersals -**  
**Agri Business Auctions**

From the planning stage of your auction,  
to completion, it doesn't cost to use our  
auction service. It pays!

Auctioneer:  
Steve Petersheim:  
Steve Jr.



**COMPLETE AUCTION SERVICE**

Antiques  
Household Goods  
Farm Equipment  
Real Estate  
215-593-2828

We have the Action to  
make your  
Auction a success!

**ACTION AUCTION CO. INC.**

• Real Estate • Farm Equipment  
• Antiques • Liquidation  
Licensed & Bonded  
Downingtown, PA  
215-873-0901