

Virginia Weekly
RICHMOND VA
MARCH 24, 1993

WEEKLY REVIEW IN VIRGINIA
REVIEW OF VIRGINIA DIRECT HOGS
FOR THE PERIOD MARCH 17-23, 1993.
RECEIPTS FOR COUNTRY BUYING
STATIONS IN VIRGINIA FOR THE
PERIOD TOTALED 1762 HEAD.
RECEIPTS FOR DELIVERY TO THE
PLANT (WITHIN A 30 MILE RADIUS)
FOR THE PERIOD TOTALED 3081
HEAD. THE VIRGINIA DIRECT HOG
MARKET FOR TUESDAY MARCH 23
CLOSED \$1.75 HIGHER COMPARED
TO LAST TUESDAY'S TRADING.

BARROWS AND GILTS: VIRGINIA
COUNTRY POINTS U.S. 1-3 220-250
LBS 44.00-46.50

LOCAL PLANT DELIVERED (30
MILE RADIUS) US 1-2 220-250 LBS.
46.50-47.00 US 2-3 220-250 LBS.
45.50-46.00 US 1-3 200-210 LBS.
42.50-43.00 US 1-3 210-220 LBS.

44.50-45.00 US 2-4 250-260 LBS.
43.50-44.00 US 2-4 260-270 LBS.
41.50-42.00 US 3-4 270-280 LBS.
39.50-40.00 US 3-4 280-300 LBS.
37.50-38.00

SLAUGHTER STEERS AND HEIFERS
3%; SLAUGHTER COWS 16%
SLAUGHTER BULLS 2%, SLAUGHTER
CALVES AND VEALERS 0%;
FEEDER CATTLE UNDER 600 LBS
62%, OVER 600 LBS 17%

PRICE RANGES FOR VIRGINIA
WEEKLY AUCTIONS

SLAUGHTER CATTLE: TOTAL
HEAD COUNT 36 STEERS: CHOICE
2-3 900-1100 LBS 68.50-74.75

HEIFERS: CHOICE 2-3 900 LBS &
UNDER 69.00-71.25 CHOICE 2-3
900-1100 LBS 71.50-75.50 CHOICE 2-3
1100 LBS & OVER 74.75-75.75

SLAUGHTER COWS TOTAL HEAD
COUNT 841 UTILITY & COMMERCIAL
COWS 40.00-52.75 FEW 32.00

SLAUGHTER BULLS: HEAD

COUNT 81 BULLS - 1-2 900-1300 LBS
52.00-61.50 1-2 1300-1600 LBS
52.50-66.50 1-2 1600 LBS & OVER
52.00-68.00

SLAUGHTER CALVES & VEALERS
TOTAL HEAD COUNT 15 HEAD
CALVES - GOOD AND CHOICE

250-500 LBS 68.00-72.00 VEALERS -
CHOICE & PRIME 200-350 LBS -----

SLAUGHTER LAMBS TOTAL HEAD
COUNT 110 CHOICE & FEW PRIME
1-2, 95-125 LBS WOOLED 81.00-96.50
CHOICE 1-2 85-125 LBS WOOLED -----
GOOD & LOW CHOICE 75-90 LBS -----
CHOICE & FEW PRIME 1-2 95-125 LBS
SPRING 94.00-100.00 CHOICE 1-2
85-125 LBS 95.00

SLAUGHTER HOGS TOTAL HEAD
COUNT 213 US 1-3 200-250 LBS

32.50-42.00 SOBERS: MEDIUM 1
200-300 92.00-108.00 FEW
115.00-123.00 300-400 89.00-107.00

400-500 87.25-105.00 FEW 85.00
500-600 80.00-96.00 600-700 77.50-88.00
700-800 73.00-83.00 800-900 70.50-80.00

HEIFERS: MEDIUM 1 300-400

78.00-92.00 400-500 74.00-88.25 500-600
73.00-83.00 600-700 71.00-79.75 700-800
73.00-76.00 800-900 -----

North Virginia

RICHMOND VA
MARCH 25, 1993

ORANGE, VIRGINIA ON 24-MAR-93
PRICES BASED ON IN WEIGHTS.

SLAUGHTER CATTLE 82 HEAD -
SLAUGHTER COWS AND SLAUGHTER
BULLS STEADY.

SLAUGHTER COWS 80 HEAD
COWS CUTTER & BONING UT. 1-3

43.00 - 50.00 HIGH DRESSING 50.00 -

51.00 BREAKING UT. & COMM. 2-4
44.00 - 50.00 HIGH DRESSING 50.00 -
51.00 CANNER AND LOW CUTTER 1-2
38.00 - 44.00

SLAUGHTER BULLS 2 HEAD
BULLS Y.G. 1-2, 1600 LBS. & OVER
63.50

FEEDER CATTLE 150 HEAD
STEERS MEDIUM 1 LARGE 1 200-300
90.00-101.00 90.00-101.00 300-400

88.00- 96.00 88.00- 96.00 400-500

92.00-102.00 92.00-102.00 500-600

83.00- 90.00 83.00- 90.00

HEIFERS MEDIUM 1 LARGE 1
300-400 77.00- 84.00 77.00- 84.00

400-500 77.00- 85.00 77.00- 85.00

500-600 74.00- 78.00 74.00- 78.00

600-700 73.00- 75.00 73.00- 75.00

700-800 70.00- 75.00 70.00- 75.00

**Shenandoah
Valley
Livestock**

Harrisonburg, Va.
March 20, 1993

Report supplied by auction

STEERS: M&L-1 300-500 LBS.
92.50-97.00; 500-700 LBS. 80.00-90.00;
700-1000 LBS. 76.50-81.00; HOLSTEIN
300-500 LBS. 61.50-82.00.

S-L&M&L-2: 300-500 LBS.
85.00-92.00; 500-700 LBS. 75.00-79.00.

FEEDER BULLS: 300-500 LBS.
85.00-91.00; 500-700 LBS. 70.00-86.50.

HEIFERS: 300-500 LBS. 82.00-91.00;
500-700 LBS. 71.00-79.75; 700-1000 LBS.
73.00-73.50.

S-L&M&L-2: 300-500 LBS.
71.00-82.00.

STOCK COWS: BEEF WITH CALVES
470.00-600.00; BABY CALVES
65.00-140.00, MOSTLY 75.00-107.50;

COWS WITH CALVES 560.00-965.00.

SLAUGHTER COWS: UTILITY AND
COMMERCIAL 42.00-46.50; CANNERS
AND CUTTER 42.00-48.00.

SLAUGHTER BULLS: 52.00-60.25.

LAMBS: FEEDER LAMBS CHOICE
57.00-69.00; SLAUGHTER EWES
23.75-29.00.

HOGS: US1-3 200-240 LBS. 32.50.

**Carlisle Livestock
Market**

Carlisle, Pa.

Tuesday, March 23, 1993

SLAUGHTER HOLSTEIN STEERS:
CHOICE 69.50-74.00; SELECT
66.25-69.00.

SLAUGHTER HEIFERS: SELECT
800-950 LBS. 72.00-74.50; HOLSTEINS
TO 62.00

SLAUGHTER COWS: STRONG
DEMAND. BREAKING UTILITY AND
COMMERCIAL 50.00-54.25, CUTTER
AND BONING UTILITY 48.00-53.50;

CANNER AND LOW CUTTER
43.00-47.00; BIG MIDDLE 44.50-48.50;

SHELLY 42.00 AND DOWN.

SLAUGHTER FAT BULLS: YG#2
53.75-58.75.

FEEDER STEERS: 400-700 LBS.
MEDIUM AND LARGE #1 84.00-89.00;

MEDIUM AND LARGE #2 75.00-82.00;

HOLSTEINS 61.00-68.00

FEEDER HEIFERS. MEDIUM AND
LARGE #2 550-750 LBS 73.00-74.00;

MEDIUM AND LARGE #1 800-900 LBS.
65.00-71.00

FEEDER BULL HOLSTEINS
58.00-71.00.

VEAL CALVES CHOICE
95.00-105.00; GOOD 75.00-89.00, STAN-
DARD 55.00-70.00, LIGHT/WEAK 50.00

AND DOWN.

HOLSTEIN FARM BULLS
115.00-145.00.

HOGS: BARROWS AND GILTS
US#1-3 210-260 LBS 46.60-47.75,

UNDER 200 LBS 30.00-38.00

SOWS: 375-550 LBS US#1-3
43.00-46.75, #2-3 39.25-41.50

FEEDER PIGS BY THE HEAD, 20-25
LBS 24.00-35.00, 30-45 LBS
28.00-40.00

SHEEP 17.00-38.00

LAMBS. CHOICE 35-60 LBS
90.00-110.00, GOOD 35-60 LBS
80.00-87.50, CHOICE 80-110 LBS
75.00-89.00; GOOD 80-110 LBS
66.00-72.00

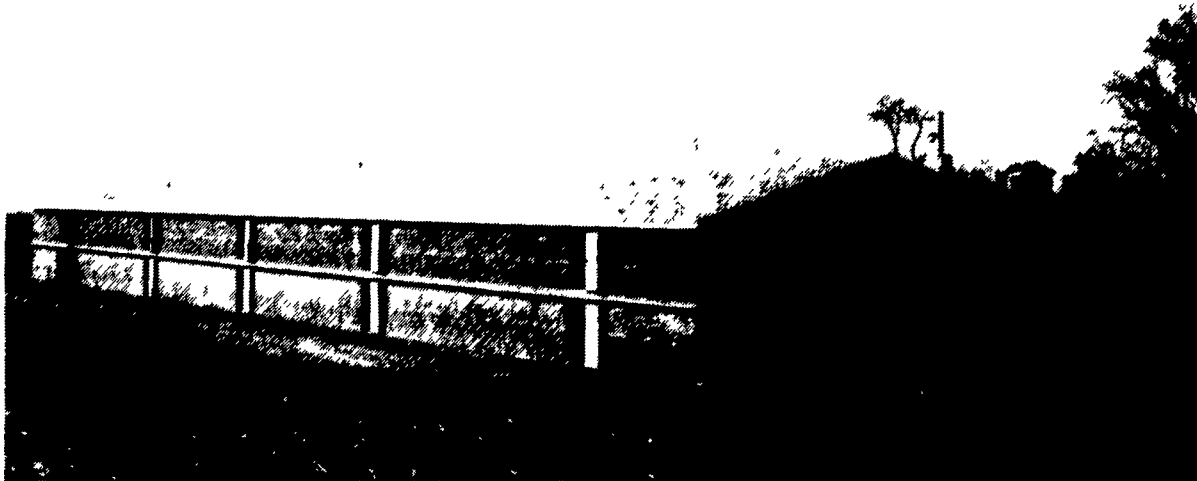
GOATS BY THE HEAD, LARGE
85.00-107.50, SM/MED/KIDS
25.00-65.00

SALE EVERY TUES RABBITS AND
EGGS 6 P.M. LIVESTOCK 7 P.M.

SPECIAL FEEDER CATTLE SALE
TUES MARCH 30, 7 P.M.

EASTER LAMBS AND GOAT SALE
FRIDAY, APRIL 2. SALE TIME 12:30
P.M. RECEIVING 7-11 A.M.

**WHO'S CONTROLLING YOUR BROILER HOUSE
INLETTING WHEN YOU ARE NOT THERE?**



WE WILL DO IT FOR YOU!

**LET HERSHEY EQUIPMENT CO. INSTALL
THE PRO II INLET CONTROLLER FROM**

Agri Ventilation Systems, INC.



Building Ventilation Controllers with the Grower in Mind



- ★ REGULATES AIR INLET DOORS
- ★ MAKES THE BEST USE OF YOUR FAN POWER
- ★ MAINTAINS MORE CONSISTENT AIR QUALITY
- ★ HELPS YOUR BIRDS GET PEAK PERFORMANCE

HERSHEY
EQUIPMENT CO.

255 PLANE TREE DRIVE
LANCASTER, PA 17603
(717) 393-5807

If It's Worth Your Investment, Trust It To Hershey

MEAT MATTERS MOST



HOME BRED lambs like these have been
winning for me and my buyers in the Mid-
Atlantic area. They LOOK GOOD. They
HANDLE GOOD. They CUT GOOD.

1993 Models Arriving Now!

**Over 100 Lambs On Ground &
More Arriving Daily.**

Contact me for meaty rams,
and club lambs

Robert Dinsmore
5842 Broad Run Rd.
Jefferson, MD 21755

1-800-331-9122

Evenings 301-371-4483

HAMPSHIRE SHROPSHIRE CLUB LAMBS