

**Isennock Auction**

New Park, PA  
March 23, 1993

Report supplied by auction

SLAUGHTER COWS: 52.00 & DOWN, ONE LOT AT 55.00.  
FEEDER STEERS: 645-885 LBS. 62.00-68.50.  
FEEDER HEIFERS: 200-250 LBS. 73.00-79.00.  
HEIFER CALVES: ALL WEIGHTS UP TO 132.00.  
FARM CALVES: 130-150 LBS. 130.00-152.00; 120-125 LBS. 127.00-165.00; 110-115 LBS. 132.00-139.00; 95-105 LBS. 127.00-155.00; 85-90LBS 100.00-102.00; WEAK AND ROUGH 80.00 AND DOWN.  
GOATS: MEDIUM 35.00-65.00 HEAD. SHEEP: 150 LBS. 25.00.  
SOWS: 500-505 LBS. 38.50.

**New Holland Horses**

New Holland Sales Stables  
New Holland, PA

Monday, March 22, 1993

Report Supplied By Auction

338 HEAD. MARKET STRONGER. DRIVING HORSES 785.00-1160.00. RIDING HORSES 585.00-925.00. REGISTERED HORSES 885.00-1085.00.  
KILLERS LIGHTWEIGHT 535.00-755.00; HEAVYWEIGHT 860.00-970.00, 30 HEAD 1040.00-1260.00.  
THIN 140.00-470.00.  
HORSE COLTS 185.00-470.00.  
PONY MARES 140.00-295.00.  
PONY COLTS 45.00-105.00.  
GELDINGS 140.00-295.00.  
LARGER PONIES 365.00-415.00

**Estimated Daily Livestock Slaughter**

Under Federal Inspection

March 24, 1993

	CATTLE	CALVES	HOGS	SHEEP
MONDAY (EST)	120,000	5,000	347,000	23,000
WEEK AGO (EST)	120,000	5,000	341,000	21,000
YEAR AGO (ACT)	121,000	5,000	346,000	22,000
WEEK TO DATE (EST)	351,000	16,000	1,012,000	64,000
SAME PD LT WK (EST)	332,000	15,000	995,000	60,000
SAME PD LT YR (ACT)	345,000	15,000	1,019,000	65,000

PREVIOUS DAY ESTIMATED...TUES. STEER AND HEIFER 93,000; COW AND BULL 26,000.

**Morrison Cove Livestock**

Martinsburg, Pa.  
March 22, 1993

Report supplied by auction

CATTLE 256. STEERS CHOICE 78.00-83.60; GOOD 74.75-77.50. HEIFERS: CHOICE 76.00-81.50; GOOD 70.50-76.00.  
COWS: UTILITY & COMMERCIAL 45.00-54.50; CANNER & LOW CUTTER 36.50-52.50.  
BULLOCKS: GOOD & CHOICE 63.25-68.25.  
BULLS: YIELD GRADE NO. 1 57.50-67.60.  
FEEDER CATTLE: STEERS 75.00-91.00; BULLS 65.00-81.00; HEIFERS 57.00-75.00.  
CALVES 342. PRIME, NO MKT. TEST; CHOICE, NO MKT. TEST; GOOD, 90.00-98.00; STANDARD 30.00-52.00; HOLSTEIN BULLS 90-130 LBS. 120.00-141.00; HOLSTEIN HEIFERS 90-130 LBS. 120.00-151.00.  
HOGS: 164. US NO. 1-2 45.50-47.00;

**Grantsville Livestock**

Grantsville, Maryland  
Sat., March 20, 1993

HOGS: TOP BARROWS & GILTS 45.00-47.40; HEAVY BUTCHER 40.00-47.00; LIGHT BUTCHER 35.00-44.00; BUTCHER SOWS 30.00-40.50, FEEDER SHOATS 20.00-42.50.  
VEAL: GOOD 65.00-85.00; STANDARD 40.00-50.00; UTILITY 35.00 AND DOWN; BULL CALVES 85.00 TO

150.00. A FEW RETURN TO FARM TO 200.00.  
SHEEP & LAMBS: GOOD 90.00-105.00; GOOD 80.00-85.00; UTILITY 75.00-78.00; SLAUGHTER EWES 30.00-45.00.  
SLAUGHTER CATTLE: GOOD, 75.00-77.00; STANDARD 70.00-72.50; UTILITY 62.50-65.00.  
HEIFERS: GOOD, 70.00-72.50, STANDARD 62.50-65.00, UTILITY 55.00-60.00  
GOATS. SMALL 10.00-25.00, LARGE 35.00-87.00.  
COWS: COMMERCIAL 45.00-51.50; UTILITY 42.00-43.50; CANNER & CUTTER 40.00 TO DOWN.  
BULLS: COMMERCIAL AND GOOD 55.00-64.00; CUTTER AND UTILITY 48.00-52.50.  
STOCK-FEEDER CATTLE: GOOD 70.00-78.50; MEDIUM 60.00-65.00.  
STEER CALVES: GOOD 75.00-82.50, MEDIUM 65.00-70.00.  
HEIFER CALVES: GOOD 70.00-75.00; MEDIUM 55.00-65.00  
EGGS: LARGE .42-65, MEDIUM .40-.50

**Valley Stockyards**

Athens, Pa.

Monday, March 22, 1993

Report supplied by auction

HOLSTEIN HEIFER CALVES BEST TO 180.00.  
VEAL CALVES TO 95.00.  
VEALER BULL CALVES BEST TO 170.00.  
SLAUGHTER CALVES 60.00 AND DOWN.  
GRASSERS & FEEDERS 45.00-70.00.  
LAMBS BABY TOP 115.00, WOOL

TO 75.00.  
SHEEP 12.00-45.00.  
HOGS COMMON TO 39.00.  
SOWS TO 37.50.  
BOARS TO 34.50.  
PIGS NONE.  
HEIFERS 46.00-52.00.  
STEERS, NO TOP ONES  
FEEDER STEERS TO 70.00  
BULLS 46.00-54.50.  
GOOD COWS 45.00-47.00, TOP 50.00.  
COWS MEDIUM 44.00-46.00  
COWS POOR OR SMALL 40.00 AND DOWN.  
CATTLE MARKET STEADY  
CALF MARKET STEADY.  
HORSES TO 840.00.  
PONIES TO 150.00.  
GOATS TO 90.00.  
LAMBS NEXT WEEK AT 12.00

**North Jersey Livestock**

Hackettstown, NJ

Tuesday, March 23, 1993

Report supplied by auction

CALVES 20-1.60.  
COWS .34-55% .  
EASY COWS .10-40% .  
HEIFERS .45-.78%  
BULLS 60-74  
STEERS .51% -.75.  
HOGS .25-.38.  
ROASTING PIGS EACH 25.00-39.00.  
SOWS .25-.36.  
SHEEP 20-65.  
LAMBS EACH 15.00-80.00  
LAMBS PER LB. 45-141.  
GOATS EACH 40.00-127.50  
KIDS EACH 15.00-80.00  
HIDES EACH 14.00-17.00  
TOTAL 1152.

Agway Seed Corn.

Bred with three things in mind: location, location, location.

"We've been using Agway seed corn for a long time. We always plant other companies' varieties for comparison, but none have done better than our Agway varieties."

David R. Smith



The only growing conditions that count are yours. So we customize our hybrids, whether for silage or grain, to fit your growing season, your soil type, your rainfall. Specifically, your location.

Yield? Standability? Outstanding. Just ask your Agway Crop Sales Specialist, Reading-Bone or Andgrow salesperson. Then simply try a field of the variety that's designed for your area. And find out how Agway research benefits the only customer that counts. Specifically, you.



**Get MOOVin' with Milkshakes!**

Replace Your Bulbs- Save Electricity  
FLUORESCENT LIGHTS



PRICES AS LOW AS ~~\$6.99~~  
NOW \$5.95

- Save Energy Replaces up to 75 watt incandescent
- Easy Installation
- Economical Lasts 10 times longer than standard bulb
- Fewer Lamp Changes
- Lower Maintenance Cost
- Durable Polycarbonate Housing
- 45 000+ Hour Ballast
- 10 000+ Hour Lamp Life
- Air Cooled
- Water Resistant Ballast
- 120 Volt
- Ratcheted Brass Socket
- Medium Base
- Starting Temperatures 0
- Made in USA

MODEL	WATTS	INCANDESCENT EQUIVALENT	INITIAL LUMENS
3000	5	25 WATTS	250
3200	7	40 WATTS	400
3500	9	60 WATTS	600
3700	13	75 WATTS	900
3900	22	90 WATTS	1300

Call Toll Free 1-800-673-2580

SOLD AND SERVICED BY:



**Northeast Agri Systems, Inc.**

FLYWAY BUSINESS PARK

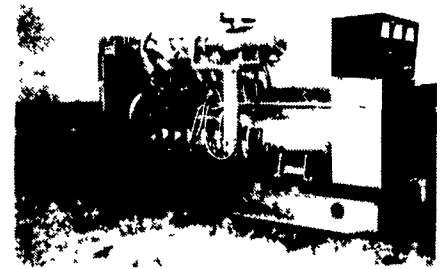
139 A West Airport Rd.

Lititz, PA 17543

(717) 569-2702



**MARTIN MACHINERY**



**GENERATORS**

Sales ★ Service ★ Rentals  
★ Complete Generator Systems  
★ PTO ★ Portables ★ 2-1600 KW  
"We Service It If You Have It And Sell It If You Need It"

34 W. Mohler Church Rd.  
Ephrata, PA 17522

Tel: 717-738-0300

Fax: 717-738-4329