

- 1991 Dodge Grand Caravan SE, 7 Pass., V6, AT, Loaded, Maroon, 62,700 Mi..... \$11,800
- 1991 Olds Cutlass Ciera S V6, AT, AC, CR, Tilt, AM-FM Cass., Maroon, 58,000 Mi.....\$7,600
- 1989 Chevy S-10 Blazer Sport 4x4 4.3 V6, AT, Loaded, Brown/Tan, 72,600 Mi.....\$8,900
- 1989 Olds Cutlass Supreme V6, 5 Spd. AC, CR, Tilt, AM-FM Cass., Black, 60,300 Mi.....\$6,800
- 1989 Ford Club Wagon XL 15 Pass., Maxi-Van, 7.3 Diesel, AT, Dual AC, CR, Tilt, AM-FM, Blue 156,600 Mi.....\$7,800
- 1989 Chevy Astro CL 8 Pass., V6, AT, AC, CR, Tilt, AM-FM Cass., Black, 71,000 Mi.....\$7,600
- 1988 Ford Aerostar XL 7 Pass., V6, AT, AC, CR, Tilt, AM-FM Cass., Blue/Silver, 51,800 Mi.....\$7,800
- 1988 Chevy 30 Panel Van, V8, AT, AC, AM-FM, Gray, 50,700 Mi.....\$6,900
- 1987 Chevy 30 Panel Van, V8, AT, AC, AM, Gray, 51,700 Mi.....\$5,900
- 1986 Ford F-250 Ext. Cab, V8, AT, AM-FM, Blue, 58,200 Mi.....\$6,800
- 1986 Chevy 30 Panel Van, V8, AT, AC, AM, Gray, 67,500 Mi.....\$4,800

**Brubaker's Auto Sales**  
Myerstown, PA  
717-866-5237



**New 92" GMC Topkick**  
366 Gas, 5 Sp., 2 Sp. Axle, Dual Tanks, Loaded With Options, GVW 25,950, Morgan 18' Stake Body  
York GMC Truck  
Lanc. Branch  
**717-285-4986**

**\$22,500**



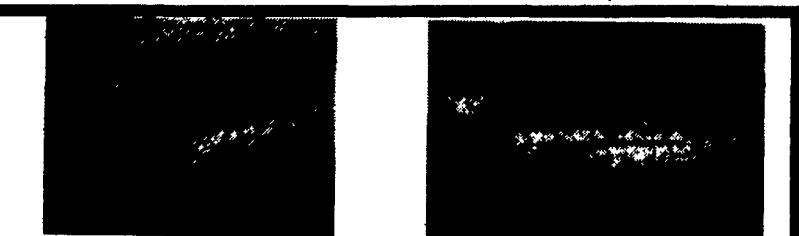
**1989 INTERNATIONAL S1954**  
DT466 (210 hp) 5+2, AB, PS, 33,000 GVW, w/18' Scott Silage and Grain Body (Tapered Sides), \$26,750

**1984 INTERNATIONAL S275**  
Cab & Chassis, 300 Cummins, 7 spd, Air Brakes, PS, 12 Front, 42 Rear, Double Framed, 154" C-A, \$14,500  
Or Equipped w/18' Scott Silage Body w/2000 Hoist, \$23,250

**1978 KENWORTH,**  
C500, 3406 Cat, PS, 13 Speed, 18 Front, 44 Rear, 146" C-A

**Scott Silage & Grain Bodies In Stock**

**SUNNY ACRE SALES**  
RD #2 Tyrone, PA 16686  
**(814) 742-7303**



**1990 GMC SL 3500, Crew Cab, 350 FI, Auto, PS, PB, Air, AM-FM, Dual Tanks, 9,000 GVW, 24,000 Miles, Local 1 Owner, Red & White, Ex. Cond.**

**\$13,900**

**88 Chevy K30 4x4 Dually, 350 FI, Auto, PS, PB, Air, AM-FM Lock-Out Hubs, 54,000 Miles, 1 Owner, White**

**\$10,500**

**A&J Auto Sales**

798 E. Main St. Rt. 322 East, Ephrata, PA 17522  
**717-733-2873**

**(800) 533-3837**

**YOUR DIRECT LINE TO GENUINE GM PARTS**

When you call the number listed above you'll reach our wholesale parts specialists, who can help you keep your GM repair work moving quickly. Ask About:

- Specializing in GM Medium Duty Trucks, Current and Obsolete.
- \$500,000 Parts Inventory
- Parts Locator For Those Hard To Find Items
- We Ship Anywhere. Local Delivery Available.
- Experienced, Knowledgeable Personnel.



**(717) 432-9697**

**Quality Dealer Since 1921**  
406 U.S. Route 15 • Dillsburg, PA 17019



*Mr. Goodwrench*

**REEDMAN LEASING**  
**1800 CARS-TRUCKS**

\*All Cars Below Equipped With Auto Trans, Air Cond, PB, PS, & Stereo.

**\*\*93 NEW JAGUAR XJ6 SDN \$499.00**  
Per Month For 36 Months. Closed End Lease. Stock #92060 & Cyl VIN PC573778 MSRP \* \$60,710 Total Of Monthly Payments \$17,984.00 With \$2500 Down

**\*\*93 NEW CORVETTE CONVERTIBLE \$431.58**  
Per Month For 36 Months. Closed End Lease \$15062 & Cyl VIN P5107973 MSRP \* \$44,254 Total Of Mthly Payments \$15,536.58 With \$4000 Down

**\*\*93 NEW LINC MARK VIII \$459.00**  
Per Month For 24 Months. Closed End Lease. Stock #98536 & Cyl VIN PY667388 MSRP \* \$37,230 Total Of Monthly Payments \$11,018 With \$3000 Down 11\* Per Mile Over 30,000

**\*\*93 NEW LINC TOWN CAR \$388.00**  
Per Month For 24 Months. Closed End Lease. Stock #98001 & Cyl VIN PY602431 MSRP \* \$34,780 Total Of Monthly Payments \$9312 With \$3000 Down 11\* Per Mile Over 30,000 Miles

**\*\*93 NEW LINC CONTINENTAL \$299.00**  
Per Month For 24 Months. Closed End Lease. Stock #99004 & Cyl VIN PY602337 MSRP \* \$33,918 Total Of Mthly Payments \$7178 With \$3600 Down 11\* Per Mile Over 30,000 Miles

**\*\*93 NEW CHRYSLER NY SALON \$199.00**  
Per Month For 36 Months. Closed End Lease. Stock #50005 & Cyl VIN PD102717 MSRP \* \$20,000 Total Of Mthly Payments \$7184. With \$2200 Down

**\*\*93 NEW DODGE STEALTH \$267**  
Per Mth For 48 Months. Closed End Lease. Stk #98008 & Cyl VIN PY006812 MSRP \* \$21,728 Total Of Mthly Pymts \$12,818 With \$1500 Down Total Of \$5,000 MI

**\*\*93 NEW MERC GRAND MARQUIS GS \$296.00**  
Per Month For 24 Months. Closed End Lease. Stock #91004 & Cyl VIN FX601241 MSRP \* \$23,529 Total Of Mthly Payments \$7184 With \$2500 Down

**\*\*93 NEW MERC SABLE GS \$219.00**  
Per Month For 24 Months. Closed End Lease. Stock #94501 & Cyl VIN PA600119 MSRP \* \$18,140 Total Of Monthly Payments \$5258 With \$2000 Down 11\* Per Mile Over 30,000 Miles

**\*\*93 NEW PLY VOYAGER \$199.00**  
Per Month For 36 Months. Closed End Lease. Stock #76002 & Cyl VIN PR107380 MSRP \* \$15,378 Total Of Monthly Payments \$7184 With \$1500 Down

**SHOP REEDMAN BEFORE YOU BUY LEASE OR RE-LEASE A CAR OR TRUCK**

**FLASH! If You Still Have Payments On Your Present Leased Car Or Truck We Would Like To Bid On Your Lease For A New Vehicle, Individual Lease, Or Company Leasing.**

**\*\*93 NEW T-10 4x4 4 DR BLAZER \$232.00**  
Per Month For 48 Months. Closed End Lease Stk# T-5304 & Cyl VIN P2180853 MSRP \* \$20,862 Total Of Mthly Pymts \$11,136.00 With \$1500 Down Total Of \$5,000 MI

**\*\*93 NEW COUGAR XR7 \$287.06**  
Per Month For 24 Months. Closed End Lease. Stock #93510 & Cyl VIN PH02930 MSRP \* \$16,898 Total Of Mthly Payments \$6889.20 With \$1500 Down

**\*\*93 NEW CHEV LUMINA 4 DR \$198.00**  
Per Month For 36 Months. Closed End Lease. Stock #35228 & Cyl VIN P9154497 MSRP \* \$15,205 Total Of Mthly Payments \$7128. With \$1500 Down

**\*\*93 NEW OLDS CUTLASS SUPREME S CPE \$261.14**  
Per Month For 36 Months. Closed End Lease. Stock #82017 & Cyl VIN PD306913 MSRP \* \$18,320 Total Of Mthly Pymts \$9401.04 With \$1500 Down

**Closed End Leases**  
First Monthly Payment Plus A Security Deposit Equal To One Monthly Payment is Required Upon Delivery. Lessee May Have The Option To Purchase The Car At Lease End At A Price To Be Negotiated With The Dealer At Lease Inception. At The End Of The Lease If You Do Not Exercise Your Option To Buy You Will Pay A Mileage Charge Of 10¢ Per Mile For Each Mile In Excess Of 15,000 Miles Per Year Plus The Costs Of Any Excess Wear Or Tear.

\* Price Includes All Cost To Be Paid By A Consumer, Except For Licensing Costs, Registration Fees & Taxes.

CALL 215-757-4961  
Ask For Reedman Leasing Dept.  
Reedman Rte 1 Langhorne Pa.

**THIS WEEKS SPECIALS**

**Gooseneck Trailers**



Gooseneck 8x24, 14,000#, Convertible Dovetail & Ramps, Double Axle

**SALE \$3695**

Many Other Styles In Stock

**HYDRO-SEEDER Factory Demo Sale**



Hydro - Seeder \$5,000  
300 Gallon Hose Reel  
18 HP Kohler Hose  
Electric Start Nozzle

**Equipment Trailer**

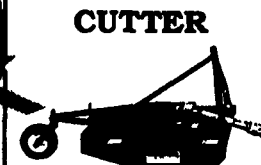


6 1/2 x 16 8000#

Wood Floor

**\$1,795**

**ROTARY CUTTER**



4 Ft. E.....\$499  
5 Ft. E.....\$525  
6 Ft. E.....\$725  
3 Point Model

**Truck Body Insert**



**Sale \$1695**  
+ Installation

SPECIALISTS IN FARM & LANDSCAPE EQUIPMENT

**Ringo Hill Farms Equipment Co., Inc.**

1624 Route 212, Pleasant Valley Quakertown, PA 18951 (215) 346-7340 FAX: (215) 346-8041

CALL OR SEND FOR A FREE CATALOG

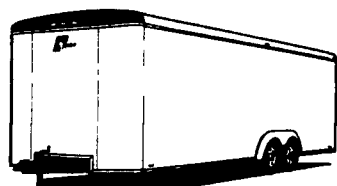
**TRAILERS - TRAILERS - TRAILERS**



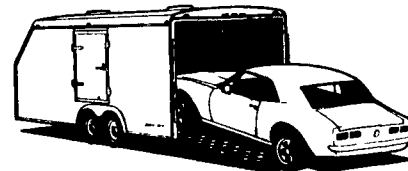
**Yarnall's Equipment CLASSIC**

P.O. Box 357, 303 E. Main St. (Rt. 322)  
Honeybrook, PA 19344

**215-273-9200**



**PERFECT 10**



**We Can Build Or Sell You A Trailer To Fit Your Needs**

**There Will Never Be A Better Time To Buy A Trailer**

**We Will Not Be Undersold!**

**ALSO GEAR VENDORS INSTALLER DEALER**