



FOR SALE
1979 Morgan Dump Trailer
 24.5 Rubber Spread Axle, 38' Frame,
 36' Bed Roll Tarp, Two Way Gate
 Grain Chute
\$12,500 OBO
717-898-0129

**TIRONIE'S
 TARPS**
717/584-2928
1/800/874-2928

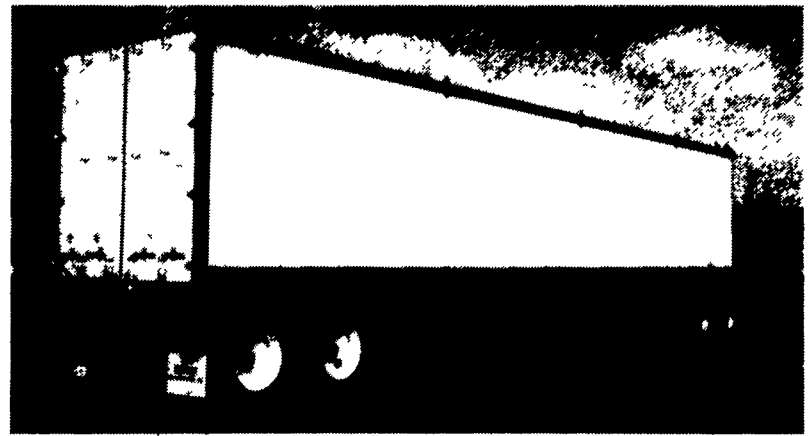
Trailer Hitches
 Brake Controllers
 Pintle Hooks
 and Much More!
 * Free Catalog *
 Free UPS/Credit Cards
 Weaver Distributing
 1-800-Weaver-D

Fuehauf 26' Aluminum
 Dump Trailer, 28' steel
 frame, tarp, hyd. tank,
 grain gate, needs some
 tires, \$2700.
 304/876-6653.

IH 1700 w/4-cylinder De-
 troit diesel, w/mounted
 Daffin feed grinder/
 molasses mixer, first
 \$1500 takes it.
 304/876-6653.

'86 Chevy Scottsdale 20
 Series Suburban, 5 pas-
 senger, 350 auto, PB, PS,
 air, AM-FM, 55,000 miles,
 brown & tan, 1 owner, ex-
 cellent condition, \$8,600.
 717-733-2873

'86 GMC High Sierra, HD,
 1/2 ton, 305 auto., PB, PS,
 air, AM-FM, 6,100 GVW,
 29,000 original miles, like
 new, 1 owner, \$6,700
 717-733-2873



*** LIVE FLOOR TRAILERS ***

EFFICIENTLY HANDLES:

- | | |
|-----------------|--------------------|
| Bark | Fertilizer |
| Carrots | Limes |
| Chopped Alfalfa | Manure |
| Coal | Mushroom Compost |
| Corn Cobs | Palletized Freight |
| Corn Silage | Potatoes |
| Cotton seed | Poultry Feed |

NEW & USED TRAILERS
 1985 Dorsey 45' Crew Top
 With New Hallico Live Floor,
 New Roll Tarp, Slider,
 Spring Suspension

Anthony
Landis

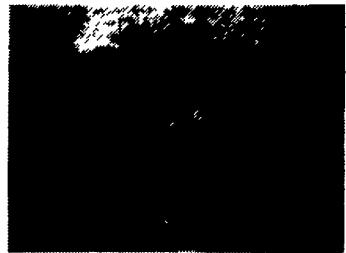
**AUTO BODY
 & SALES**

1701 B Division Hwy.
 New Holland, PA - 717-355-0644

**Specializing in Rebuilt
 Collision Damaged Vehicles**



1986 D250 4x4 360 AT, PS,
 PB, 46,864 Miles, 7500 GVW,
 Needs 2 Fenders & Bum-
 per.....\$3,200



1986 Chevrolet C/20 Scotts-
 dale, 305 V8, 4 Sp., 48,148
 Miles, Light Rollover Runs &
 Drives, Have M/Parts, Incl.
 Stand. Bed.....\$2,500

Custom Truck Bodies Sales & Service
TRANS EQUIPMENT, INC.

Lancaster County
 Rt. 272, P.O. Box 340, Brownstown, PA 17508
717-859-2095



1992 Ford E-350 Super XLT 15
 Pass., 351, V8, ATO, Dual Air &
 Heat, Privacy Glass, PW, PL, Tilt,
 Cruise, Cassette, 23,000 Mi.



1991 Dodge B350, Cargo, 7500
 GVW, EFI 360, ATO, PS, PB, AC,
 Tilt, Cruise, 46,000 Mi., Industrial
 Shelving, Cloth Captain Seats
 #1547.



1992 Nissan UD 2300 Tractor, 210
 HP, Turbo Dsl., 6 Spd., 19.5
 Radials, PS, PB, 23,000 GVW,
 44,000 Miles.



1989 Ford E-350 Dual Wheel, 14'
 Hi-Cube, 10,000 GVW, EFI 351,
 ATO, AC, PS, PB, Unicef Body,
 62,000 Mile, Like New #1561



1988 Isuzu FVR 8.4 Turbo Diesel, 5
 Speed w/2 Speed Rear, 32,900
 GVW, Air Brakes, 10x20 Radial,
 77,000 Miles #1153.



1988 Nissan UD 3000 w/22' Bed w/
 Lift Gate, 210 HP, Turbo Diesel, PS,
 PB, 5 Speed, 11x22.5 Radials
 30,000 GVW.



1990 Nissan UD 2300, 180 HP, Tur-
 bo Diesel, 6 Speed, 19.5 Radials,
 23,000 GVW, PS, PB, #1503.



1989 Mitsubishi FK 23,000 GVW,
 170 HP, Turbo Diesel, 5 Spd, PS,
 PB, 58,000 Mile #1531.



1990 Chevy S10 4x4 Durango,
 Long Bed, 4.3 V6, ATO, PS, PB,
 A/C, Bedliner, 27,000 Mi., 1 Owner
 Trade-In.

**Four Way
 Auto Sales**

770 West Main St.
 New Holland, PA 17557
717-354-3199

TOLL FREE
(800) 669-6235



1989 Ford F-700 170 HP Ford Diesel; 562 Hyd.
 Brakes; 30,000 GVW; New 14' Midwest Bnk-
 head #3008



KEYSTONE FORD TRUCK SALES

I-83 At 322 East
 PO Box 4194
 Harrisburg, PA 17111

*Jon Eby - Sales Manager,
 Bill Vogel, Charlie Kruger,
 Bruce Bingeman, Clyde Shuey*

LOCAL
(717) 564-6661



1989 Ford F700 429 V8 Gas; 562; Air Brakes;
 30,000# GVW, 51,000 Miles; New 10' Midwest
 Dump Body; Holst & PTO (Stk. #3006)



1987 Ford LN9000 New 10' Dump; L-10 240
 HP, 9 Spd., 34,700 GVW (Stk. #3179)



1984 GMC 6000; 368 V8 Gas; 5 Spd; 19,200
 GVW; PS; 51,000 Miles; 21' Dump Body;
 Fresh Paint; (Stk. #3010).



1987 Ford LN9000 New 10' Dump; 215 HP
 CAT; 5 Spd./2 Spd.; 32,000 GVW; (Stk. #3002)



(1) 1987 Ford LN9000; L-10 240, 7 Spd.; 12 &
 23, PS, 150" WB.; 213,000 Miles



1978 Ford LNT9000; NTC 290; 10 Spd.;
 12,000 FA; 34,000 Rears; 150" WB.; P.S.



(1) 1987 Ford LN9000; L-10 240; 7 Spd.; 12 &
 23; PS; 150" W.B.; 213,000 Miles.



1988 White ECS64T; NTC 300; 7 Spd.; 12,000
 FA; 38,000 Rear; 150" W.B.; PS; Lease
 Maintained.



1987 Ford CF 7000 24' Van; 170 HP Ford
 Diesel; 5/2 Trans.; Full Air Brakes; 29,500
 GVW; Walk Ramp (Stk. #3170)



1981 Mack R888ST; 300 Mack; 5 Spd.; 10,500
 FA; 34,000 Rears; 152" W.B.



1988 Ford F-900 10' Dump 210 HP Ford; 6
 Spd.; Air Brakes; 33,000 GVW; Pintle Hook.



1987 International 1954 Cab & Chassis;
 DT466; 5 Spd.; Air Brakes; 32,000 GVW (Rep.
 Photo).



1988 International 1954 24' Van; DT 466 180
 HP; 5 Spd.; Hyd. Brakes; 25,000 GVW; 96,000
 Miles; (Rep. Photo.)

TRUCKS ARE OUR ONLY BUSINESS • FINANCING AVAILABLE • MANY MORE TRUCKS IN STOCK