

Virginia Weekly

Richmond, Va.
 Wednesday, March 17, 1993
 WEEKLY REVIEW IN VIRGINIA REVIEW OF VIRGINIA DIRECT HOGS FOR THE PERIOD MARCH 10 - 16, 1993. RECEIPTS FOR COUNTRY BUYING STATIONS IN VIRGINIA FOR THE PERIOD TOTALED 1864 HEAD. RECEIPTS FOR DELIVERY TO THE PLANT (WITHIN A 30 MILE RADIUS) FOR THE PERIOD TOTALED 3372 HEAD. THE VIRGINIA DIRECT HOG MARKET FOR TUESDAY MARCH 16, CLOSED \$.25 HIGHER COMPARED TO LAST TUESDAY'S TRADING.
 BARROWS AND GILTS: VIRGINIA COUNTRY POINTS U.S. 1-3 220-250 LBS 43.40-44.50 LOCAL PLANT DELIVERED (30 MILE RADIUS) US 1-2 220-250 LBS. 44.75-45.25 US 2-3 220-250 LBS. 43.75-44.25 US 1-3 200-210 LBS. 40.75-41.25 US 1-3 210-220 LBS. 42.75-43.25 US 2-4 250-260 LBS. 41.75-42.25 US 2-4 260-270 LBS. 39.75-40.25 US 3-4 270-280 LBS. 37.75-38.25 US 3-4 280-300 LBS. 35.75-36.25.
 SLAUGHTER STEERS AND HEIF-

ERS 1%; SLAUGHTER COWS 28% SLAUGHTER BULLS 2%, SLAUGHTER CALVES AND VEALERS 0%; FEEDER CATTLE UNDER 600 LBS 47%, OVER 600 LBS 22% PRICE RANGES FOR VIRGINIA WEEKLY AUCTIONS SLAUGHTER CATTLE: TOTAL HEAD COUNT 14 STEERS: SELECT 2-3 900-1100 LBS 65.00 HEIFERS: SELECT 2-3 850-1100 LBS 61.00-66.00 CHOICE 2-3 1050-1300 LBS ----- SLAUGHTER COWS TOTAL HEAD COUNT 667 UTILITY & COMMERCIAL COWS 41.00-50.00.
 SLAUGHTER BULLS: HEAD COUNT 50 BULLS - 1-2 900-1300 LBS 54.00-60.00 1-2 1300-1600 LBS 54.00-61.50 1-2 1600 LBS & OVER 51.25-60.00.
 SLAUGHTER CALVES & VEALERS TOTAL HEAD COUNT -- HEAD CALVES - GOOD AND CHOICE 250-500 LBS.
 SLAUGHTER LAMBS TOTAL HEAD COUNT 172 CHOICE & FEW PRIME 1-2, 95-125 LBS WOOLED 79.25-84.00 CHOICE & FEW PRIME 1-2, 95-125 LBS SPRING 90.00 CHOICE 1-2 85-125 LBS SPRING 99.50.
 SLAUGHTER HOGS TOTAL HEAD

COUNT 162 US 1-3 200-250 LBS 40.00-43.00 US 1-3 180-200 LBS --- SOWS US 1-3 300-500 LBS 27.00-38.50 500 LBS & OVER 28.00-40.00.
 FEEDER CATTLE TOTAL HEAD COUNT FOR ALL WIGHTS 1,637 STEERS: MEDIUM 1 200-300 95.00-110.00 300-400 95.00-109.50 400-500 88.00-103.00 FEW 85.00 500-600 84.00-95.00 600-700 78.50-88.50 700-800 75.75-79.00 800-900 75.50.
 HEIFERS: MEDIUM 1 300-400 78.00-92.50 400-500 75.00-92.00 500-600 74.50-88.00 600-700 65.00-74.00 700-800 - 800-900.

North Virginia

Southside (Blackstone), Va.
 Wednesday, March 17, 1993
 PRICES BASED ON OUT WEIGHTS. SLAUGHTER CATTLE 46 HEAD. SLAUGHTER COWS 39 HEAD COWS CUTTER & BONING UT. 1-3 43.50 - 46.00 HIGH DRESSING 46.75 - 48.75 BREAKING UT. & COMM. 2-4 44.00 - 47.25 HIGH DRESSING 47.25 - 51.25 CANNER AND LOW CUTTER 1-2 36.00 - 40.00.
 SLAUGHTER BULLS 7 HEAD BULLS Y.G. 1-2, 900-1300 LB. 53.00 Y.G. 1-2, 1300-1600 LB. 60.00 Y.G. 1-2, 1600 LBS. & OVER 54.50 - 58.50.
 LAMBS TOTAL RECEIPTS 7 HEAD FEEDER LAMBS 7 HEAD CHOICE AND FANCY, 60-70 LB 95.00
 FEEDER CATTLE 156 HEAD STEERS MEDIUM 1 LARGE 1 SMALL 1 MED & LARGE 2 300-400 89.00 89.00 - 400-500 85.00-91.50 85.00-91.50 74.00-80.00 87.50- 88.50 500-600 80.50- 86.50 80.50- 86.50 75.00- 78.50 - HOLSTEIN STEER MED & LARGE 2 300- 500 71.25- 82.00 500- 700 65.00- 67.50 700-900 58.00- 58.50.

HEIFERS MEDIUM 1 LARGE 1 SMALL 1 MED & LARGE 2 300-400 82.00- 86.50 82.00- 86.50 - 77.00- 86.00 400-500 78.50- 85.50 78.50- 85.50 - 70.00- 76.50 500-600 73.00- 75.00 73.00- 75.00 - - BULLS MEDIUM 1 LARGE 1 SMALL 1 MED & LARGE 2 200-300 102.50-105.00 102.50-105.00 - - 300-400 93.00- 97.00 93.00- 97.00 - 78.50- 81.00 400-500 80.00- 89.00 80.00- 89.00 - 75.00- 78.00 500-600 70.00- 78.00 70.00- 78.00 - - COWS RETURNED TO FARMS 10 HEAD - M&L-2, 8-10 YRS OLD 800-1000 LB \$40.00-47.50 PER CWT. M-1, 3-4 YRS OLD 950-1050 LBS \$63.00 PER CWT. COWS WITH CALVES AT SIDE 1 PAIR - M-1, 10-12 YRS OLD 800 LBS WITH CALF 60 LBS \$450.00 PER PAIR BABY CALVES RETURNED TO FARMS 18 HEAD NEWBORN TO 4 WEEKS OLD \$82.00-147.50 PER HEAD. OVER 100 LBS \$102.50-140.00 PER CWT.

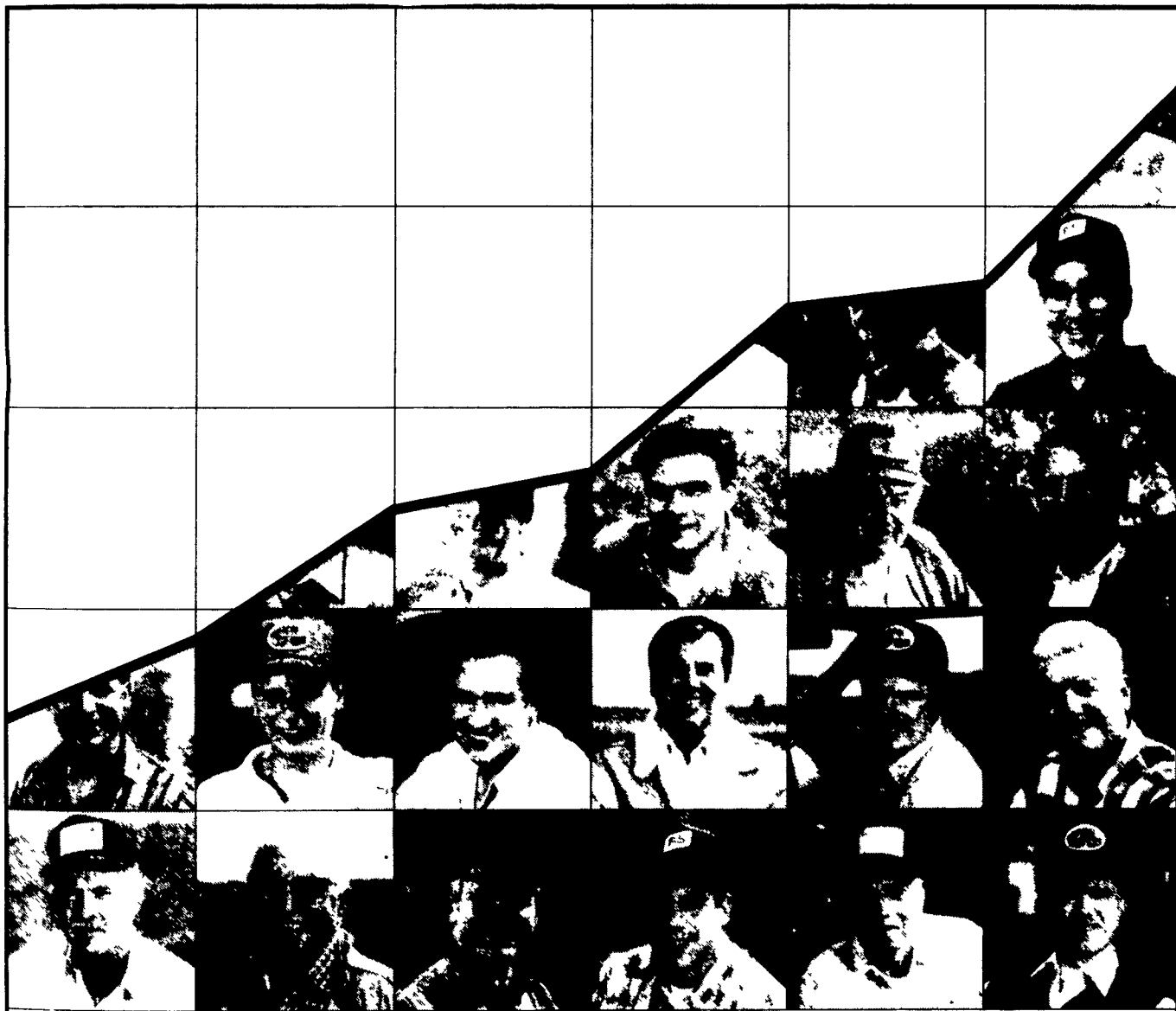
Orange, Virginia

Wednesday, March 17, 1993
 PRICES BASED ON IN WEIGHTS. SLAUGHTER HOGS 13 HEAD BOARS 300-600 LB. 23.25.
 SLAUGHTER CATTLE 80 HEAD. SLAUGHTER COWS 78 HEAD COWS CUTTER & BONING UT. 1-3 45.50 - 52.50 BREAKING UT. & COMM. 2-4 47.75 - 52.75 CANNER AND LOW CUTTER 1-2 43.00 - 45.00.
 SLAUGHTER BULLS 2 HEAD BULLS Y.G. 1-2, 1300-1600 LB. 62.50 LAMBS TOTAL RECEIPTS 29 HEAD FEEDER LAMBS 6 HEAD CHOICE AND FANCY, 60-70 LB. 65.50 EWES & RAMS 23 HEAD EWES ALL GRADES 33.50 - 35.00.
 FEEDER CATTLE 105 HEAD STEERS MEDIUM 1 SMALL 1 300-400 107.00 95.00- 96.00 400-500 91.50- 95.50 - 500-600 80.00- 87.00 - 600-700 - -

700-800 73.00 - 900-1000 71.00- 74. HEIFERS MEDIUM 1 LARGE 1 MED & LARGE 2 300-400 81.00- 86.00 88.00- 92.00 85.00 400-500 80.00- 85.00 - 80.00- 82.00 500-600 75.00- 80.00 75.00- 75.50- 600-700 - - 72.50 BULLS MEDIUM 1 400-500 86.00- 89.00 COWS RETURNED TO FARM 22 HEAD - M&L-1, 4-8 YRS OLD 850-1100 LBS \$520.00-640.00 PER HEAD. COWS WITH CALVES AT SIDE 33 PAIR; - M&L-1, 4-8 YRS OLD 850-1100 LBS WITH CALVES NEWBORN TO 200 LBS \$550.00-780.00 PER PAIR. BABY CALVES RETURNED TO FARMS 17 HEAD NEWBORN TO 4 WK OLD \$57.50-87.50 PER HEAD. OVER 100 LBS \$90.00-110.00 PER CWT.

Smithfield, Virginia

Wednesday, March 17, 1993
 PRICES BASED ON IN WEIGHTS. SLAUGHTER HOGS 123 HEAD SOWS US 1-3, 300-500 LB. 32.75 - 39.90 US 1-3, 500 LBS. & OVER 28.00 - 33.90.
 SLAUGHTER CATTLE 28 HEAD. SLAUGHTER STEERS & HEIFERS 10 HEAD STEERS SELECT 2-3, 900-1100 LB. 68.50 - 73.50.
 SLAUGHTER COWS 14 HEAD COWS CUTTER & BONING UT. 1-3 42.50 BREAKING UT. & COMM. 2-4 40.00 - 45.50.
 SLAUGHTER BULLS 4 HEAD BULLS Y.G. 1-2, 900-1300 LB. 52.00 - 58.00 Y.G. 1-2, 1600 LBS. & OVER 60.00.
 FEEDER CATTLE 44 HEAD STEERS MEDIUM 1 SMALL 1 MED & LARGE 2 300-400 85.00 82.50- 92.00 - 400-500 - 89.00- 90.00 87.50- 89.00 500-600 - - 600-700 - - 700-800 - 73.50- 74.00 - 800-900 - 71.50.
 HEIFERS MEDIUM 1 SMALL 1 MED & LARGE 2 200-300 87.00 - 76.50 300-400 78.00 - 70.00 400-500 74.00 65.00- 73.00 - BULLS SMALL 1 300-400 85.00 400-500 78.50- 83.00 500-600 79.00.



W-L measures success one grower at a time.

We could show you stacks of research data that demonstrate the benefits of planting W-L alfalfa seed, but the most important barometer of our success is the success of growers like you. Growers have depended on W-L Research as a provider of superior alfalfa seed for over thirty

years, and in that time W-L has developed seed well-known for its value. At W-L, "value" is defined as long-term yield, persistence, and quality. These characteristics of W-L varieties are the cornerstone of our success, and we continue to measure our success as we always have — one grower at a time.

Forage Ahead with W-L!



Contact your local dealer:

Beachley-Hardy Seed Company
 454 Railroad Ave., P.O. Box 3147
 Shiremanstown, Pennsylvania 17011
1-800-4HARDY-1

Our Reputation is Growing In Your Fields.

For this area, we recommend WL 317 and WL 320

Replace Your Bulbs - Save Electricity
FLUORESCENT LIGHTS

~~PRICES AS LOW AS \$6.99~~
NOW \$5.95
 • Save Energy Replaces up to 75 watt incandescent
 • Easy Installation
 • Economical Lasts 10 times longer than standard bulb
 • Fewer Lamp Changes
 • Lower Maintenance Cost
 • Durable Polycarbonate Housing
 • 45 000+ Hour Ballast
 • 10 000+ Hour Lamp Life
 • Air Cooled
 • Water Resistant Ballast
 • 120 Volt
 • Ratcheted Brass Socket
 • Medium Base
 • Starting Temperatures 0
 • Made in USA

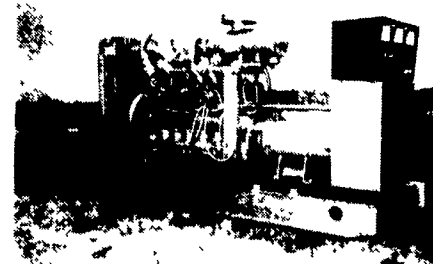
| MODEL | WATTS | INCANDESCENT EQUIVALENT | INITIAL LUMENS |
|-------|-------|-------------------------|----------------|
| 3000 | 5 | 25 WATTS | 250 |
| 3200 | 7 | 40 WATTS | 400 |
| 3500 | 9 | 60 WATTS | 600 |
| 3700 | 13 | 75 WATTS | 900 |
| 3900 | 22 | 80 WATTS | 1300 |

Call Toll Free 1-800-673-2580

SOLD AND SERVICED BY:



Northeast Agri Systems, Inc.
 FLYWAY BUSINESS PARK
 139 A West Airport Rd.
 Litzitz, PA 17543
 (717) 569-2702



GENERATORS

Sales ★ Service ★ Rentals
 * Complete Generator Systems
 * PTO * Portables * 2-1600 KW
 "We Service It If You Have It And Sell It If You Need It"

34 W. Mohler Church Rd.
 Ephrata, PA 17522

Tel: 717-738-0300
 Fax: 717-738-4329