



National Egg Market

Wednesday, March 17, 1993

NATIONAL EGG MARKET - AT A GLANCE: Prices to retailers were unchanged to higher in the Northeast and Midwest, and unchanged elsewhere. Prices to producers, distributors, and breakers continued to trend higher. The market tone was steady to firm. Demand covered the full range and was mostly moderate. East Coast deliveries returned to more normal schedules as snow removal eased transportation difficulties. Supplies ranged short to ample, and extra eggs remained confidently held or sought. Breaking stock supplies were short to adequate, and prices were higher; some plants worked reduced schedules where finished product buyers began to balk at the higher product costs. Live hen markets were mixed, mostly steady in the Central States, and at least steady in the East and South.

Weekly New York Egg Market Northeast Quotes

	From Fri., March 12 to Thurs., March 18				
	FRI.	MON.	TUES.	WED.	THURS.
WHITE					
JUMBO	.90	.90	.92	.93	.95
EX. LARGE	.90	.90	.92	.93	.95
LARGE	.89	.89	.91	.92	.94
MEDIUM	.82	.82	.84	.85	.86
PULLETS	.70	.70	.72	.73	.73
OFF GRADE	.77	.77	.79	.80	.82
BROWN					
EXTRA LARGE	.88	.88	.90	.91	.93
LARGE	.84	.84	.86	.87	.89
MEDIUM	.65	.65	.67	.68	.70
OFF GRADE UNDERGRADES AND CHECKS	.38	.38	.39	.40	.41

BREAKING STOCKS: FRI. 48-50 LBS. 51.00-53.00, 50 LBS. AND UP 53.00-55.00; TUE. 48-50 LBS. 52.00-54.00, 50 LBS. AND UP 54.00-56.00; WED. 48-50 LBS. 53.00-55.00, 50 LBS. AND UP 55.00-57.00; THURS. 48-50 LBS. 54.00-56.00, 50 LBS. AND UP 56.00-58.00.

LANCASTER FARMING STAFF

- Everett R. Newswanger, Managing Editor
 Lou Ann Good, Staff
 Andy Andrews, Staff
 Vernon Achenbach, Jr., Staff
NEWS CORRESPONDENTS
 Joyce Bupp, York County Seven Valleys (717) 428-1885
 Connie Leinbach, Berks County Boyertown (215) 367-4376
 Randy Welle, Indiana Marion Center (412) 397-2529
 Judith Patton, Union Aaronsburg (614) 422-8735
 Gail Strock, Millin Belleville (717) 935-5675
 Linda Williams, Bedford Bedford (814) 623-5745
 Gay Brownlee, Somerset Salisbury (814) 662-2127
 Beth Pitzer, Cumberland Shiremanstown (717) 737-2448
 Bonnie Brechbill, Franklin Chambersburg (717) 369-2916
 David Hiebert, Westmoreland Scottsdale (412) 887-8829
 Agnes Smith, Northampton Mt. Bethel (215) 588-8262
 Christine McCahran, Juniata Millintown (717) 438-2008
 Ronald Clark, Susquehanna Factoryville (717) 836-4999
 C.J. Houghtaling, Tioga Middlebury Center (717) 376-2821
 William Ebenshade, Chester Coatesville (215) 383-5548
 Sharon Schuster, Maryland New Windsor (301) 635-2654
 Eva Martin, Maryland Smithsburg (301) 824-2106
 Karl Berger, Special Maryland (301) 473-4390

Eastern PA & NJ Poultry

Atlanta, Ga.

Tuesday, March 16, 1993

Trading insufficient to report prices on either class of fowl. The late winter snow storm has affected both live and dressed markets throughout the region. Processing schedules are curtailed at some locations as trucks are unable to get to the farms. Current offerings are light as producers assess needs. Undertone mixed.

CENTS PER LB., GENERALLY FOR SLAUGHTER THE FOLLOWING WEEK.

HEAVY TYPE (7 POUNDS AND UP) * AT FARM BUYER LOADING TOO FEW TO REPORT FOB PLANT TOO FEW TO REPORT LIGHT TYPE AT FARM BUYER LOADING TOO FEW TO REPORT * WEIGHTS UNDER 7 LBS. SUBJECT TO DISCOUNT.

Hackettstown Poultry & Egg

Hackettstown, N.J.

Tuesday, March 16, 1993

Report Supplied by Auction

HEAVY FOWL .85.

ROASTERS .40-.75.

ROOSTERS 1.60-3.00.

BUNNIES EACH 2.50-4.25.

DUCKS 1.20-1.50.

RABBITS 1.00-2.00.

WHITE EGGS: EXTRA LARGE & JUMBO .72-.90; LARGE .70-.85; MEDIUM .63-.70; SMALL .40.

BROWN EGGS: EXTRA LARGE & JUMBO .68-.80; LARGE .65; MEDIUMS .55-.60; SMALL .40-.47.

New England Shell Eggs

Wednesday, March 17, 1993

NEW ENGLAND: Prices to producers were higher for large, prices to retailers were unchanged to higher for large and mediums, and the balance of prices were unchanged. Demand was mixed. Supplies were generally adequate for brown eggs, and generally tight for white eggs.

PRICES PAID TO PRODUCERS, CASES EXCHANGED, GRADE YIELD BASIS, BROWN EGGS LOOSE, AT FARM, CENTS PER DOZEN RANGE JUMBO .82-.85, EXTRA LARGE .82-.85, LARGE .80-.83, MEDIUM .62-.65, SMALL .40-.43.

BOSTON: PRICES TO RETAILERS, SALES TO VOLUME BUYERS, USDA GRADE A AND GRADE A, BROWN EGGS IN CARTONS, DELIVERED STORE DOOR, CENTS PER DOZEN RANGE EXTRA LARGE 1.01-1.03, LARGE .96-1.00, MEDIUM .79-.83.

Delmarva Broiler/Fryer Market

Wednesday, March 17, 1993

Movement of ready-to-cook whole birds was sluggish. Seller offerings were fully adequate to instances heavy. Where excess product was available, it was often noted as difficult to place, regardless of price. Live supplies were moderate. Weights were mixed in a full range. Processing schedules

were very heavy. Less than trucklot asking prices were unchanged at ***49-57 cents,*** but several sellers noted prices as negotiable. Trade sentiment was steady, but very cautious. In the part complex, supplies were fully adequate, instances heavy, particularly on boneless skinless breasts and leg quarters.

ESTIMATED SLAUGHTER OF BROILER/FRYERS IN DELMARVA (000)

ESTIMATED ACTUAL AVG. WEIGHT ACTUAL AVG. WEIGHT 03/17 03/15 03/15 03/10 03/08 2,225 1,896 4.64 2,177 4.68.

*BROILER/FRYER CURRENT NEGOTIATED PRICES FOR IMMEDIATE DELIVERY INCLUDES MOSTLY MULTIPLE-DROP SHIPMENTS OF BRANDED AND WING TAGGED TO NEW YORK CITY FROM DELMARVA.

BRANDED U.S. GRADE A RANGE 47-64 WEIGHTED AVERAGE 51.16 NO. OF BOXES 6,635. *6 of 9 plants reporting.

Northeast Chicken Parts

Wednesday, March 17, 1993

Trucklot buying interest was very light and disappointing. Supplies of boneless skinless breasts were at least adequate for the light demand. Most trading was reported at slightly lower prices and the trade sentiment was weak. Line run breasts were not as available as early week with trading limited to standing commitments. Yellow skin leg quarters were offered at lower trending prices but most buyers were out of the market until consumer demand improves. Wings were also readily available. Other dark meat items were at least adequate but traded at steady prices.

PRICES PAID PER POUND, ICE PACKED AND CO2 PACKED BROILER/FRYERS PARTS, DELIVERED TO FIRST RECEIVERS IN POOL TRUCKLOT AND TRUCKLOT QUANTITIES ITEM CURRENT NEGOTIATED TRADING BREAST - BONELESS SKINLESS 200 (WITH AND WITHOUT TENDERS) BREAST - WITH RIBS 97-98 BREAST - LINE RUN 97 LEGS 32-33 LEG QUARTERS 19-20 THIGHS 28-29 DRUMSTICKS 28-29 WINGS 37-38 BACKS AND NECKS (STRIPPED) 10-12.

LIVERS (5 POUND TUBS) 25-30 GIZZARDS (HEARTS) 30-35 INCLUDES NEW YORK CITY METROPOLITAN AREA, NORTHERN NEW JERSEY, MASSACHUSETTS, CONNECTICUT, RHODE ISLAND AND PENNSYLVANIA (NORTHEAST OF HARRISBURG). * TODAY'S NEGOTIATED SALES AS OF 11:30 A.M. ** WEIGHTED AVERAGE PRICE OF ALL GRADES AND BRANDS OF PRODUCT SHIPPED, OR TO BE SHIPPED AS OF 1:30 P.M. DAY OF REPORT.

Philadelphia Eggs

Thursday, March 18, 1993

Report Supplied by USDA

MARKET COMMENT: TRADE SENTIMENT REMAINED STEADY TO FIRM. DEMAND WAS LIGHT TO GOOD, MOSTLY MODERATE, AND BEST WHERE FEATURED. SUPPLIES WERE SHORT TO AMPLE, AND EXTRA EGGS WERE GENERALLY HELD OR OFFERED WITH CONFIDENCE; THE LARGE SIZES WERE LESS AVAILABLE THAN MEDIUMS AND SMALLS. A EXTRA LARGE 81%-92, A LARGE 79%-90, A MEDIUM 73-81.

N.E. Weekly Shell Egg Report

March 16

Report Supplied by USDA

PRICES PAID PER DOZEN GRADE "A" BROWN EGGS IN CARTONS DELIVERED TO RETAIL STORES:

	EX. LARGE	LARGE	MEDIUM	SMALL
MAINE	1.15	1.10	.93	.71
N. HAMP.	1.08-1.12	1.05-1.09	.88-.92	.66-.70
MOSTLY	1.10-1.11	1.07-1.08	.90-.91	.68-.69
RHODE ISLAND	1.11-1.15	1.06-1.10	.89-.93	.67-.71
MOSTLY	1.11	1.06	.89	.67
VERMONT	1.07-1.15	1.04-1.10	.90-.96	
MOSTLY	1.07	1.04	.96	

SUBSCRIPTION INFORMATION

Subscription Price:

\$19.00 per year; \$36.00 - 2 years

\$29.00 per year outside of:

PA, NJ, MD, DE, NY, OH, VA & WV

\$56.00 - 2 Years

Non-Refundable

Lancaster Farming (ISSN 0023-7485) is published weekly for \$19.00 per year; \$36.00 - 2 years by Lancaster Farming, P.O. Box 609 1 E Main Street, Ephrata, PA 17522 Second Class postage paid at Ephrata, PA 17522. POSTMASTER Send address changes to LANCASTER FARMING, 1 East Main Street, P.O. Box 609, Ephrata, PA 17522

Phone: Lititz (717)626-1164 or Ephrata (717)733-6397, Lancaster (717)394-3047 FAX 717-733-6058

For address change form or new subscription see near Mailbox Markets.

Members of National Association Of Agricultural Journalists

Pa. Newspaper Publishers Association, and National Newspaper Association.

National Advertising Representative

J.L. Farmakis, Inc.

Phone (203)966-1746

Available On Microfilm

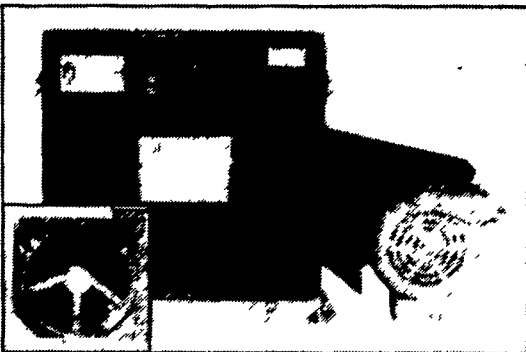
Copies of Lancaster Farming are available on microfilm from University Microfilms International, 300 North Zeeb Road, Ann Arbor, Michigan. Any questions about their service should be directed to the publishing manager.

PUBLISHER'S LIABILITY FOR ERROR

The publisher shall not be liable for slight changes or typographical errors that do not lessen the value of an advertisement. The publisher's liability for other errors or omissions in connection with an advertisement is strictly limited to publication of the advertisement in any subsequent issue or the refund of any monies paid for the advertisement

Hammer Mills

The practical approach to grinding and mixing high moisture and dry grains



FEATURES

- ★ Low Initial Cost
- ★ Low Maintenance
- ★ Easy Serviceability
- ★ Heavy Duty Plate Magnet
- ★ Dust Tight Enclosure
- ★ 360° Screen
- ★ Low Operating Cost
- ★ Compact Design
- ★ Reversible Hammers & Screens
- ★ Removable Wear Plate
- ★ Self Locking Door Latches



automatic farm systems

608 Evergreen Rd. Lebanon, PA 17042 (717) 274-5333

We Buy Poultry Weekly For Cash!

- Leghorn Fowl
- Spent Fowl
- White Pigeons
- Bantams
- Bantam Roosters
- Broilers
- Rabbits
- Guinea Hens
- Muscovy Ducks

We Pick Up At The Farm

Watkin's Live Poultry

718-272-6712

bet. 7 AM & 6 PM

718-843-9302

After 7 PM

Green Dragon Livestock Sales



Location: 1 mile N. on North State St., Ephrata.

SALE EVERY FRIDAY

11:00 A.M. - Beef

6:00 P.M. - Small Animal Sale

Office 717-733-2444

Home 717-838-4318

WALTER H. RISSE, Proprietor

EGG INDUSTRY SOFTWARE

Custom Programming

We specialize in software for the egg industry.

Call us with your needs.

Heritage Computer Solutions

(a division of Heritage PMS, Inc.)

Annville, PA

1-800-388-EGGS