



Tired of feeling hemmed in? Looking for a summer/getaway spot? Trade your neighbors for this country home on 3+ acres that's just a short ride from town. Convenient first-floor bedroom and bath w/more bedrooms up. Nice quiet, secluded setting with pond for summer fishing, winter skating. Northern Tioga County. \$49,500

**BEARD REAL ESTATE**  
403 E. Main St., Elkland, PA 16920  
(814) 258-7117  
Eric L. Beard, Broker  
Mary C. Heltzenrater, Sales Associate

**SANFORD G. LEAMAN, REALTOR/AUCTIONEER**  
1 (800) 836-8113

**LANCASTER COUNTY** 45 or 60 acre farm in Manheim area with like new barn, old log house needing restoration plus a modular home, stream, woods, great horse or Amish farm. Call Sanford Leaman for price and location.

**ADAMS COUNTY** Littleton area, Amish farm, great for horses, 130 acres, priced under \$382,500 2 homes, hog barn, dairy barn, a great buy! Call Sanford Leaman for details. Open to reasonable offers.

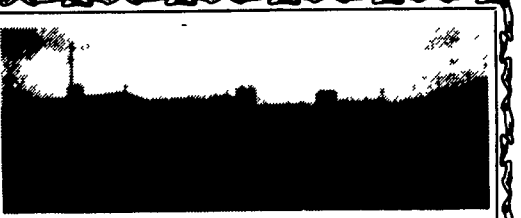
**TIOGA COUNTY. NEW LISTING** 204 acre DAIRY farm with 130 acres of good tillable farmland. 2 silos, 50 stall tie barn, inground swim. pool and much, much more. Be the first to see this one and BUY IT TODAY. It won't last long on today's market. Priced At: \$235,000.00.

Call Sandy Leaman to List Your Farm. We Have Many Buyers Waiting For Just The Right Place and Yours May Fit The Bill.

We Are Working On Several Nice Dairy Farms Listings in Tioga, Bradford County Area. Call For Strict Confidential Information.

**TO SELL FARMS IN EASTERN PENNSYLVANIA**  
CALL  
**HERSHEY FARM AGENCY, INC.**  
Thomas L. Hershey, Realtor Associate  
Hiram Hershey, Realtor/Broker  
1-800-346-0505 (PA only)  
215-287-8888

**SOUTHEASTERN YORK COUNTY**  
322+ Contiguous Acres - 3 Parcels  
Approximately 225 Ac. Tillable  
Parcel I - 154+ Ac. Large home overlooking pond. 250 head slatted floor automated cattle barn, 3 silos, bank barn, complete cattle handling facilities  
Parcel II - 109+ Ac. Large home, pond 100 head cattle barn, silo, extra building right.  
Parcel III - 58+ Ac. with building right and two approved building lots. Beautiful view.  
Sell together or separately  
(717) 993-2717



**LANCASTER CO. BROILER FARM:**  
50,000 Bird capacity. Has 4 houses total of 36,704 sq. ft., 3 houses have Big Dutchman chain feeder and 2-10 ton feed bins. 1 house has Choretime feeders and 2-8 ton feed bins. All houses have nipple waterers. 3 bedroom 14x70 Victorian Mobile home. Has potential to gross \$55,000.00 per year. ML#84772

**COLDWELL BANKER** Call Clay Mumma at  
**Coldwell Banker**  
**MGM Realty, Inc.**  
at (717) 392-0440 or  
(717) 367-5155

**Chester Co. E. Fallowfield Twp.**  
Mobile home park, 88 pads, and 2,000 sq. ft. residence + 2 apartments, 14 acres. Priced at \$1.6 million.

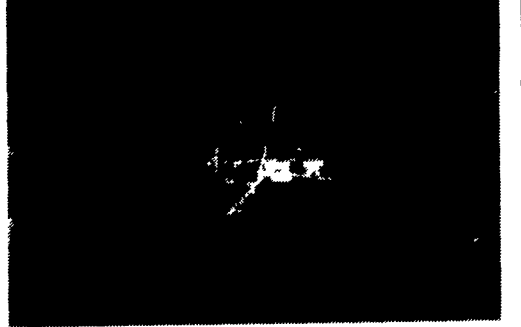
**Juniata Co.**  
Two 1 acre building lots, Richfield, Pa. \$17,500.

**Northern Dauphin Co.**  
Very special gentleman farm. 3 Br, restored 1834 stone home and bank barn, very private setting with your own pond & trout stream on 82 acres, 55 open, bal. wooded.

I need farms in the Amish areas of Dauphin, Perry, Lycoming and Northumberland Counties.

Call Harry Zimmerman  
Office: 717-299-4885  
1-800-472-2641  
Car: 717-575-2542  
**TOWN & COUNTRY REALTY**

**HUNTINGDON COUNTY**



¼ miles N. of Shade Gap on Route #35 184 acres, 44 crops, 23 pasture, 113 woods.  
DAIRY OPERATION: Parlor, 58 freestalls, inside bunk feeder, 2 silos, machine shed, 2 story bank barn, 9 calf condo, 2 story house: 7 rooms and bath w/elec. heat. Also will sell cattle and machinery. More land and building available to lease.  
Call Owner at (814) 259-3331

**Cupolas and Weather Vanes**  
REDWOOD BIRD FEEDERS  
**MANNIE'S WOOD SHOP**  
58 Queen Rd (¼ mile S. of Intercourse)  
Gordonville, PA 17529  
Ventilate and Decorate  
Cupolas Manufactured & Custom Built  
COME & SEE OUR INVENTORY ON DISPLAY

**COMPACT 40 ACRE DAIRY FARM**  
**CAPABILITY OF TOP PRODUCTION IN ALL EFFICIENT PACKAGE IN YORK COUNTY**  
\* Easy Access to Lancaster Markets \* Farmhouse With 3-4 Bedrooms and 2 Baths \* 80 Cow Tie Stall Barn - 1 Story Built In 1980 \* 2 BouMatic SS Pipeline \* 1500 Gallon DariKool Tank \* Dry Cow Shed \* Virginia Style Heifer Barn \* Roadside Stand with 2 Walkin Coolers \* Machinery Shed With Heated Shop \* Lancaster Silos 20x80 and 18x70 \* Harvestore HMC 20x50 \* 500,000 Gallon Lagoon \* Multipurpose Building \* Rented Land Available \$250,000 Financing Available \* Extra 100 Acres May Be Purchased  
**Call CENTURY 21 American Dream, Inc.**  
Ask for THOM STEIN AT 717/757-6676 (Office)  
or 717/252-2001 (home) or  
Ask For SAM STEIN AT 717/757-6676 (office)  
or 717/757-2421 (home)

**DEMERE REALTY**  
Rte. 3 Box 91H  
Little Falls, NY 13365  
Phone & Fax (315) 823-0288  
George Demeree, Broker

#703 - 226 A. DAIRY FARM w/92 tillable, barn w/62 on pipeline, room for 25 calves, also heifer barn, 3 silos & V.G. 12 rm. colonial home - \$236,000.  
#177 - 300 A. DAIRY FARM w/160 tillable - 67 ties on pipeline, mach. shed, 2 silos & V.G. 8 rm. colonial home - \$137,500.  
#116 - 57.8 AC. HOBBY FARM w/102 more A. available, 9 rm. home in V.G. cond., 2 barns, silos & like-new mach. shed - \$176,000.  
#152 - 207 A. DAIRY FARM w/90 tillable, 62 cows on pipeline, 3 silos with unloaders, 45x40 ft. mach. shed & good 8 rm. home - \$238,000.  
#164 - 249 A. DAIRY FARM w/140 tillable - 52 on pipeline & 32 heifer stalls, mach. shed, lg. silo w/unloader, lots of water, 11 rm. colonial home w/pool - \$325,000 w/cows & mach. or \$240,000 bare.  
#307 - 46 A. LOT w/6 A. woods, 3 storage bldgs., 2 wells, utilities & trailer spot - 1290 ft. frontage - on quiet rd. w/nice views - \$55,000.  
#309 - 300 A. DAIRY FARM w/250 tillable - lg. open fields - 3 ponds & well, 110 cow free-stall-plus 90 cow older barn, 4 lg. silos, 9 rm. home w/pool, EVERYTHING A-1 cond. - \$385,000.  
FREE FARM LISTS AVAILABLE.

**VIRGINIA FARMS SHENANDOAH VALLEY**

**LONGVIEW**, c. 1888 Longview Farm is graced with a privately situated 12 room farmhouse on 165 acres of scenic and productive farmland at the base of the eastern slope of Massanutten Mountain, five minutes from Elkton, twenty minutes from the Valley Mall at Harrisonburg, and thirty-five minutes west of Ruckersville, **MAGNIFICENT BLUE RIDGE VIEWS** Stream, well, traditional bank barn and large pole barn Video Price \$400,000.  
**HOLBROOK FARM**, c 1760 105 acres with rolling meadows and pastures 2 homes, pool, stream, 2 substantial livestock and hay barns Views to the Alleghenies, Convenient to Lexington, Staunton and Brownsburg Video Price \$395,000  
**NICHOLSON FARM** 240 acre working cattle farm with spring-fed stream, two ponds, and magnificent views to the Blue Ridge and Alleghany Mountains Barn, smokehouse, springhouse, silo PRIVATE Approximately 200 acres in highly productive farmland and pasture with the balance in hardwoods Fantastic building sites Brownsburg Video Price \$480,000  
**ROQUETA** Spectacular 262 acre cattle farm overlooking the Walkers Creek Valley Three bedrooms, two and one-half baths Teak and Saltillo tile flooring, a soaring stone fireplace, and woodwork of cherry, walnut, antique oak, and antique poplar combine with advanced systems and Pella windows to offer the ultimate in privacy and enjoyment Stream, spring, pond, wells 40 acre hardwood forest Barn Brownsburg Video Price \$950,00  
For further information please call Dick Glenn, Principal Broker, GRI Evenings and Weekends (703) 348-5656

**Royer & McGavock** Ltd. Realtors  
2301 Commonwealth Drive  
Charlottesville, VA 22901  
(804)973-8040, FAX: (804) 974-7116

**Dairy Farm, 100 cow barn + 150 river bottom acres, barn, milking parlor, 5 silos, machine shed, hay storage, main house has 3 bdrms, 2 baths, garage, inground pool + more, tenant house 4 bdrms, 1½ baths, etc. Much more on this once in a lifetime offering, asking \$340,000 #1215. Operating Dairy Farm, 150 +- acres, nice 52 stall cow barn, 2 silos, good 2 sty 4 bdrm home, centrally located between Mansfield, Elmira, & Troy, asking \$185,000 #1237. Own your own business. Meat processing plant & equipment. All set up to go, 11+ acres w/home included, 3 bdrms, 2 baths, fmlly rm, LR, DR, great setup for someone to earn a good living. Only \$135,000 #1225. 148.41 Acres 40 ac. open land, bal. wooded, exc. perc site, Jackson Twp, asking \$120,000 #1241.**

**Koch** 9 Cone Street  
Wellsboro, PA 16901  
717-724-3500  
REAL ESTATE AND INSURANCE

**WIMPLE ASSOCIATES**  
"NEAT-AS-A-PIN"... 235 acre Madison Co. farm; one of the best maintained farms we have. Very good 62 stall barn with 2" pipeline, 20x60, 18x60 and 14x28 silos. 40x60 drive through machinery & hay barn with 13' doors. Second barn for 30 heifers, calf barn for 28. Impressive 5 bedroom Colonial with modern kitchen and 2400' of living area. Everything in mint condition. Enough feed included to last a year. Distress sale. \$235,000  
140 COW FREE STALL: 325 acres of graded slopes with 200 acres tillable. Good corn and alfalfa farm. Barn could milk up to 150, has Surge parlor with auto take-offs, (2) 24x60 unloading silos, 9 & 12 ton feed bins, ample heifer facilities. Shop and tool shed. Two homes, one and two families; both nice. Buyer has choice of homes for \$265,000.  
**MORT WIMPLE ASSOCIATES**  
SLOANSVILLE, N.Y.  
518-875-6355  
FAX: 875-6749  
FREE DAIRY CATALOGUES