



1991 IVECO - Model 23-16,
155 HP, Turbo Diesel, Engine Brake,
5 Speed, 22,800 GVW, 20 Ft.
Morgan Body, Rear Tuckaway
Liftgate, Excellent Shape
\$16,995
Call Jay At 1-800-222-3373



**INTERNATIONAL 6x6 BRIDGE
TRANSPORTING STAKE BODY
TRUCKS**

Front Winch, PS, Air Brake, 1400/20 Tires, 21 ft. Bed with removable steel racks, Continental 6 cyl. engine. Like NEW 900-5,000 Miles Excellent for off road heavy duty cargo transporting with their all wheel drive and ability to climb a maximum grade of 60 degrees + A must for every farmer. \$9,000 each or two for \$8,500 each.

814-834-1018 St. Marys, Pa.

Aluminum dump trailer, 26', 100% road ready, very nice condition w/tarp. \$7,500 (717)532-2354

Bin Type Salt and Cinder Spreader, 5Yd Capacity, Set-Up for 6 Wheeler Dump Truck w/Central Hydraulics, \$700 OBO, Good Condition 302-239-6840

Featherlite 25' aluminum enclosed gooseneck trailer, used as mobile store, excellent condition 215/562-5868

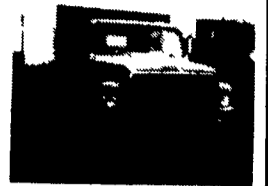
FOR SALE 1976 International Loadstar 1700 School Bus titled as a truck, 345V-8 w/back cut out Currently used in a lawn care business Good for camper, welders, farmers, movers, storage, builders Use your imagination! Inspected, needs battery. \$1500 717/949-2332

FOR SALE 1975 U-Mack single axle tractor, 237 engine, 5spd trans York County (717)792-4004

R & R CAR AND TRUCK CENTER



(3) 40 to 45' Tandem Axle Platform Trailer Road/Storage Trailers
Call For Details



85 IHC S1954, Tandem Axle, 20' Platform Dump, 50,000 GVW, Low Miles, Twin Cyl Hoist, Clean
Call For Details

**(5) 40 FT. INSULATED
STORAGE VAN TRAILERS
— PRICED RIGHT! —**

**CALL RAY LEED:
(717) 560-4901**

**HENDERSON
TARP & TRUCK COVER SERVICE**
REAR 8 ANN STREET MIDDLETOWN, PA 17057
PH. (717) 944-5865

Interstate 283 East-West, Take Harrisburg Airport Exit to Middletown or Take Exit 19 Pennsylvania Turnpike. Just 15 minutes from Harrisburg, PA.

★ WE SPECIALIZE IN ALL TYPES OF FARMING COVERS ★

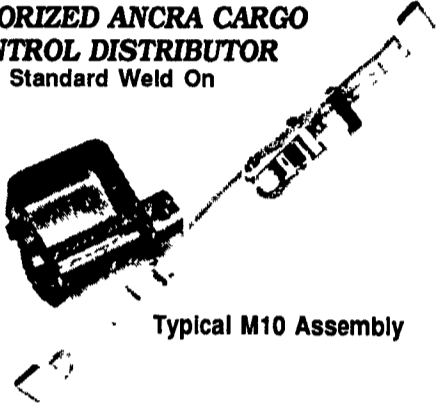
AUTHORIZED AN CRA CARGO CONTROL DISTRIBUTOR
Standard Weld On

MANUFACTURERS OF
CANVAS & VINYL TARPS

HERE'S A LISTING OF A FEW TYPES:

- 1. Steel Tarps
- 2. Mesh Tarps
- 3. Lumber Tarps
- 4. Dump Tarps
- 5. Open Top Tarps
- 6. Machinery Tarps
- 7. Roll Tarps

Repair Dept. at your Service.
*We Accept Master Charge & Visa.
*We Ship Anywhere!



Typical M10 Assembly

We Sell & Install Roll Tarps - Call for Pricing!

WE ALSO SELL HEADACHE RACKS



AUTO BODY & SALES

1701 B Division Hwy.
New Holland, PA • 717-355-0644

*Specializing In Rebuilt
Collision Damaged Vehicles*



1987 Beauville 20 Light RH
Front Damage, 305 AT, PS, PB, AC, TW, CC, Delay, Cass. P.D. Locks, 44,000 Miles.....\$3,950



1986 Chevrolet C/20 Scottsdale, 305 V8, 4 Sp., 48,148 Miles, Light Rollover Runs & Drives, Have M/Parts, Incl. Stand. Bed\$2,500

Mark VII - Pickups - Broncos -
Bronco II - Stake Body - Crew Cab -

Custom Vans
Lynx
Topaz
Diesel Pickups
Mustang
T Bird

'93 FORD CREW CABS

As Low As **\$20,995**

In Stock

- (4) '93 Diesel, Stick
- (2) '93 In Transit
- (1) '93 Diesel, 4x4 Dually
- (4) '93 Centurions Diesel, Stick

'93 FORD F-150

#1442, 6 Cyl., 5 Spd, PS, PB, AM-FM St., Rear Step Bumper
DELIVERED PRICE

\$10,995*

'93 FORD F-250 SUPER CAB 4x4

Diesel, Stick, PW, PL, More!

2 In Stock!

From **\$24,390**

'92 & '93 CONVERSION VANS

8 To Choose From!

Starting As Low As \$19,995!

V8, AC, Automatic, PS, PB, TV, Loaded, HI-Tops & Low Tops

'87 CHEVY C-10 PICKUP 4x4

V8, AT, One Owner, 62,000 Mi. #1299A

SALE **\$8,995**

'91 FORD EXPLORER

V6, AT, AC, PW, PDL, XLT, 1 Owner, #P1570

SALE **\$16,898**

'91 FORD EXPLORER SPORT

4x4

2 Dr., V6, 5 Spd., Loaded, One Owner, #1302A

SALE **\$16,300**

'90 FORD RANGER XLT

5 Spd., One Owner, Only 14,000 Mi. #P1575

SALE **\$7,997**

'87 CHEVY C-1500 PICKUP

305, AT, Two-Tone, 66,000 Mi., #1366B (File Photo)

SALE **\$7,693**

'90 FORD F-150 4x4 SUPER CAB

5.8L, AT, Loaded Capt. Chairs, 32,000 Mi. #P1565

SALE **\$17,320**

'89 FORD D-150 HI-TOP CONV. VAN

V8, AT, Loaded, Elec. Sofa Bed, TV, Everything You Need!

SALE **\$16,989**

'83 CHEVY SUBURBAN

6.2L Diesel, AT, AC, 3rd Seat, High Miles But Clean One Owner, #1191B

SALE **\$4,898**

'92 FORD AEROSTAR EXT.

XL, V6, AC, Alloy Wheels, More

SALE **\$14,789**

Unless This Emblem Is On Your Car Or Truck You Probably Paid Too Much

SHEEHY LEBANON

SHEEHY FORD LINCOLN MERCURY INC.

20th & Cumberland St., Lebanon

9-9 Daily
9-5 Sat.
717-272-7671

Parts Dept. Open
Daily 8-5
Sat. 8-12
717-273-8168

Tempo - Cougar - Continental - Town Car - 4x4 - Box Van - Rangers -