

# Top Pennsylvania DHIA Herds

(Continued from Page C20)

R B + FRANK CRAWFORD	3	50.8	21374	0	833	3.9	683	3.2
TIMOTHY E LAUVER	G3	37.7	21043	0	694	3.3	673	3.2
JOHN M ZIMMERMAN	G3	46.7	20759	0	767	3.7	666	3.2
HAROLD B SHEARER	3	36.4	21021	0	748	3.6	661	3.1
RAYMOND E KAUFFMAN	B3	61.5	20529	0	763	3.7	651	3.2
MARK L ZOOK	3	68.5	20802	0	700	3.4	650	3.1

## LACKAWANNA

PAUL+MARK DARLING	3	51.0	22876	0	874	3.8	739	3.2
ANDREW & GEO YEDINAK	3	52.6	20682	0	829	4.0	672	3.2
FRON BROS	G3	54.4	20485	0	754	3.7	654	3.2
JOHN FRON	B3	38.6	19467	0	719	3.7	627	3.2
AMASA HILL FARM	B3	105.5	18237	0	697	3.8	603	3.3
PAUL MANNING	B3	48.7	16861	0	659	3.9	554	3.3
DANIEL NAYLOR	3	64.5	17030	0	678	4.0	554	3.3
HARRY ALLAN MC LAIN	B3	43.3	14980	0	510	3.4	485	3.2
LEE COURTRIGHT	G3	35.1	14626	0	541	3.7	461	3.1
CARL J ROSIAK	B8	33.7	12422	0	481	3.9	408	3.3
MERLE + ROBERT LEWIS	B3	55.0	12044	0	424	3.5	375	3.1

## LANCASTER

J HAROLD FRITZ	B3	148.2	23198	0	867	3.7	744	3.2
GLENN E BURKHOLDER	3	67.5	23404	0	932	4.0	708	3.0
ROBERT H ROHRER&SONS	B3	383.3	22080	1	802	3.6	689	3.1
SINGING MAPLE FARMS	B3	82.8	20844	0	789	3.8	666	3.2
J WILMER HORST	B3	41.1	20693	0	774	3.7	658	3.2
FRANKLIN VIEW FARMS	B3	117.9	20187	0	771	3.8	646	3.2
WILMER L HORST	B3	55.5	20576	0	763	3.7	642	3.1
NORMAN L HERSHEY	3	83.1	20721	0	737	3.6	639	3.1
J ROBERT KINDIG	3	60.6	20141	0	803	4.0	636	3.2
PAUL H ROHRER & SONS	G3	152.7	20262	0	756	3.7	624	3.1
GLENN R BUSHONG	B3	119.7	19835	0	762	3.8	620	3.1
TOM + DALE SMITH	3	28.4	19488	0	732	3.8	611	3.1
LYNN M GOOD	3	46.4	19508	0	723	3.7	607	3.1
MAR-VIL ACRES FARM	B3	51.7	19718	0	744	3.8	605	3.1
GLENN R BINKLEY	B3	34.2	19682	0	767	3.9	604	3.1

## LAWRENCE

TROTACRE FARMS	B3	37.7	26347	0	875	3.3	845	3.2
SNYDER DAIRY FARM	B3	96.6	21487	1	756	3.5	698	3.2
MIKE BOHONIK	B3	32.5	22162	0	778	3.5	698	3.1
WILSONS DAIRY FARM	B3	48.9	22011	1	771	3.5	679	3.1

LEFT-MAC FARM	3	63.5	21300	0	785	3.7	665	3.1
B TIMOTHY STURGEON	B3	51.5	20863	0	784	3.8	663	3.2
JOE W FERRIS	BB	36.3	19371	1	731	3.8	655	3.4
PAUL LAWRENCE	3	54.7	19988	0	750	3.8	641	3.2
RICHARD J KIND	B3	175.7	20102	0	739	3.7	640	3.2
S WELLS MC CREADY	G3	69.3	19961	0	677	3.4	634	3.2
KENLAND FARM	3	79.6	20393	0	744	3.6	633	3.1
COSGROVE DAIRY FARM	B3	38.7	19880	0	718	3.6	631	3.2
GREEN LANE FARM	B3	59.6	19766	0	708	3.6	626	3.2
RED SPRINGS FARM	3	53.6	19018	0	800	4.2	618	3.3
ROB MCKISSICK	3	35.1	18789	0	717	3.8	609	3.2

## LEBANON

ARNOLD ACRES	3	59.7	25785	0	903	3.5	821	3.2
GARY LEWIS	3	81.0	23734	0	876	3.7	775	3.3
CURVIN+JAY GOOD	B3	94.3	24992	0	873	3.5	772	3.1
RAYMON & MARLIN GETZ	3	58.3	23214	0	905	3.9	762	3.3
RICHARD+LINDA KRALL	B3	38.6	23180	0	846	3.6	753	3.2
BRUCE R HEILLINGER	B3	13.9	23178	0	749	3.2	750	3.2
ARTHUR R KRALL & SON	3	74.2	23199	0	844	3.6	750	3.2
DALE GOOD	B3	90.3	24144	0	882	3.7	747	3.1
LOUIS E MARTIN	G3	48.5	23509	0	819	3.5	740	3.1
VINCENT A WAGNER	3	61.3	22936	0	882	3.8	739	3.2
DALE L HOOVER	3	73.3	22833	0	786	3.4	733	3.2
DAVID+CHRIS WILLIAMS	B3	60.0	22473	0	775	3.4	722	3.2
DAVID BRANDT	3	101.4	23084	0	891	3.9	721	3.1
RICHARD&RONALD SHIRK	3	72.6	22807	0	831	3.6	718	3.1
MARLIN G MARTIN	B3	47.7	22824	0	776	3.4	717	3.1

## LUZERNE

PAUL STOSS JR	3	53.6	22895	0	950	4.1	708	3.1
HILLSIDE FARMS INC	3	73.4	22090	0	817	3.7	702	3.2
JACK+NELSON DENT	3	35.5	20994	0	897	4.3	682	3.2
C K TROKELL FARMS	B3	104.9	19558	0	837	4.3	634	3.2
PECORA BROS	B3	207.5	18968	0	714	3.8	628	3.3
MANZONI BROS	B3	91.7	19256	0	745	3.9	610	3.2
DENNIS MOYER	B3	62.3	19463	0	748	3.8	608	3.1
MARTIN SMITH	B3	33.1	18966	0	700	3.7	600	3.2
ROBERT HOUGH	3	54.3	19124	0	760	4.0	598	3.1
JEANETTE CHARLES YOST	B3	31.2	18414	0	672	3.6	580	3.1
ERIC STEVENS	B3	26.3	17294	0	704	4.1	564	3.3
ROBERT STOLA	G4	13.7	15882	0	693	4.4	560	3.5
FLOYD RINRHIMER	B3	38.0	17545	0	706	4.0	543	3.1
ALBERT BROGAN	G3	37.7	16499	0	676	4.1	529	3.2
CHARTER LAND FARMS	B8	21.7	15360	0	521	3.4	509	3.3

(Turn to Page C22)

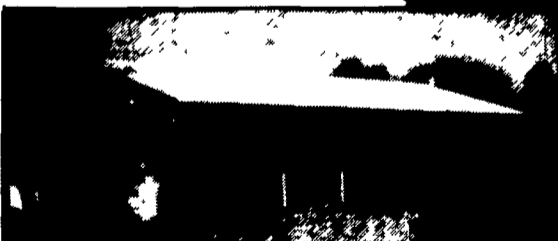
## CUSTOM BUILDER OF DAIRY, HOG, HORSE, STORAGE, RESIDENTIAL AND COMMERCIAL BUILDINGS



Freestall Building



Hog Finishing Building



Storage Building



Horse Barn

## VALLEY VIEW CONSTRUCTION, INC.

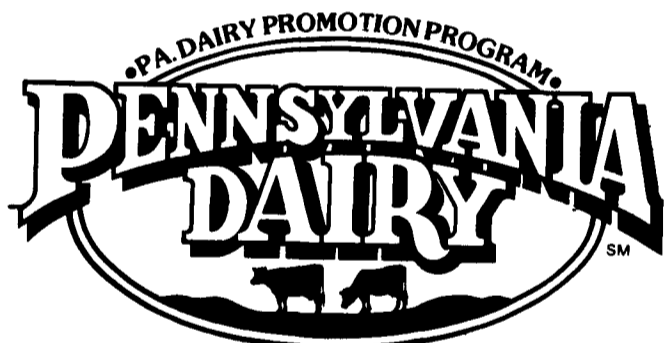
2622 Valley View Rd., Morgantown, PA 19543  
Office (215) 286-5407 • Home (215) 445-8317

**SPRING SPECIAL**  
**5% DISCOUNT** ON ALL BUILDINGS  
With This Ad. Expires 3/30/93

THE BRAND THAT MAKES THE DIFFERENCE.



LESTER BUILDING SYSTEMS  
A Division of Butler Manufacturing Company



## What Do You Need?



Grain Drying and Storage Bins, Wet Tanks, Super Structures, Drying And Aeration Fans, Feed Tanks, Augers.

BALDOR Farm Duty 1 & 3 Phase Motors

Hutchinson Transport Augers, U-Troughs, Distrib. Augers, Grain Cleaners

SHIVERS Grain Drying Equipment

We Not Only Give You What We Have But What You Want

### WE CUSTOM MANUFACTURE:

Painted, Galvanized, and Stainless Steel Fabrication, Feed Bins, Feeders, Hoppers, Covers, Dump Pits, Augers, and Control Systems to Automate Your Operation

All At

automatic farm systems

608 Evergreen Rd., Lebanon, PA 17042  
(717) 274-5333

