

ASA Urges Administration To Quickly Resume Soy Shipments

ST. LOUIS, Mo. — The American Soybean Association (ASA) is strongly urging the Administration and Congress to resume shipment of soybeans and soybean products to Russia and other countries of the Former Soviet Union (FSU).

ASA President and Florida soybean farmer Steve Yoder said ASA has discussed alternative programs with USDA Secretary Mike Espy, and has encouraged him to help the U.S. restore this key export market for soybean farmers.

"The Former Soviet Union needs assistance at this time because of the current unstable economic situation there," Yoder said. "U.S. soybean farmers have been supporting efforts to build demand for soy protein and oil, and now we need to help secure the necessary programs to get the product to them."

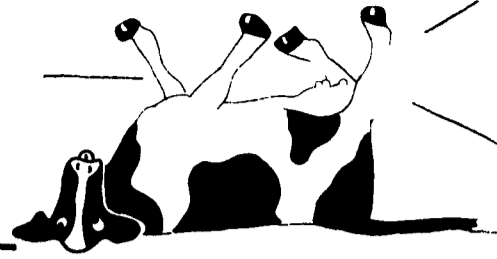
Russia is more than \$400 million in arrears on total credits of \$4 billion. Exports to the FSU under GSM-102 export credit sales were suspended in December after Russia failed to repay bank loans guaranteed under the program.

The FSU is a valuable market for U.S. soybean farmers. In 1991-1992, the Soviet Union imported more than 150 million bushels of soybean equivalent in

the form of U.S. soybeans and soymeal. About halfway into the

1992-1993 marketing year, the FSU has only imported 12.5 mil-

lion bushels of U.S. soybean equivalent.



Hey! Folks

If your cows are slipping and falling, it ain't my fault because I have a machine called a Scabblar that will fix that concrete so your cows won't keep slipping all the time.

We've got service all around this section of the country, and I have a fellow just jumping to do your job mighty fast.

And that ain't all, our prices are right reasonable, and if you're a tightwad we'll let you do the job yourself if you've got over 500 square feet. It can save you right smart a money.

So call me on my nickel at 800-692-0123. If I'm not by the phone, some real live person will take your number, and I'll try to get back to you real soon. Usually somebody is awake in this outfit, so you just call any time day or night. But, please mind the Lord, and don't call on Sunday.

Just one more thing. We fellows make our living doing this kind of work, and we've got children to feed and bills. That's our side of it, but you've got such things too. A lot of people tell us that this Scabbling saves a whole lot more than it costs. So go ahead and do it. I'll put shoes on everybody's feet.

Be looking to hear from you folks right soon.

The Scabblar Man

800-692-0123



HARDY STOVE

- FURNACE SITS OUTSIDE - 10' -100' from home/ business/barn.
- CONVENIENT - Load every 10-12 hours. Burns logs up to 16" in diameter & 30" long. Stops most log splitting.
- THERMOSTAT CONTROLLED - Even heat.
- EASILY CONNECTS to forced Air/Hot Water System Needs no chimney or water heater. Heats domestic hot water year round. Warm months of the year firing every 6 to 10 days.
- ALLERGIES Caused By Indoor Burning Of Wood & Coal!! Keep Fire Damage & Dirt Outside

Ideal For New Construction Existing Homes Greenhouses And Pools

UL LISTED ALL STAINLESS STEEL CONSTRUCTION ANY SIZE TO MEET YOUR NEED

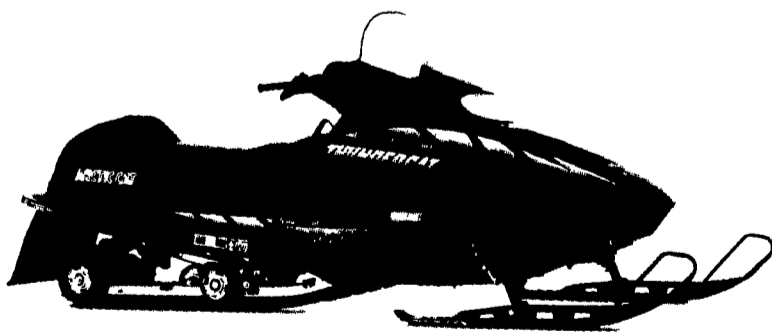
For More Information Contact.

Lois Foy

442 Lake Meade Dr. East Berlin, PA 17316

(800) 582-7554, (717) 259-9929

INSTANT CASH MACHINE.



Order your '94 sled early and you'll get up to \$600 in Cat Cash** All you have to do is place a \$200 non-refundable deposit by April 1, 1993 Then, go on a shopping spree featuring all your favorite Arcticwear, genuine parts and accessories But you better make tracks Because new Cats** have a tradition of moving awfully fast



M & S SALES & SERVICE, INC.

(1 1/2 Miles West Of Blue Ball on Rt. 322) 717-354-4726

New Holland, PA

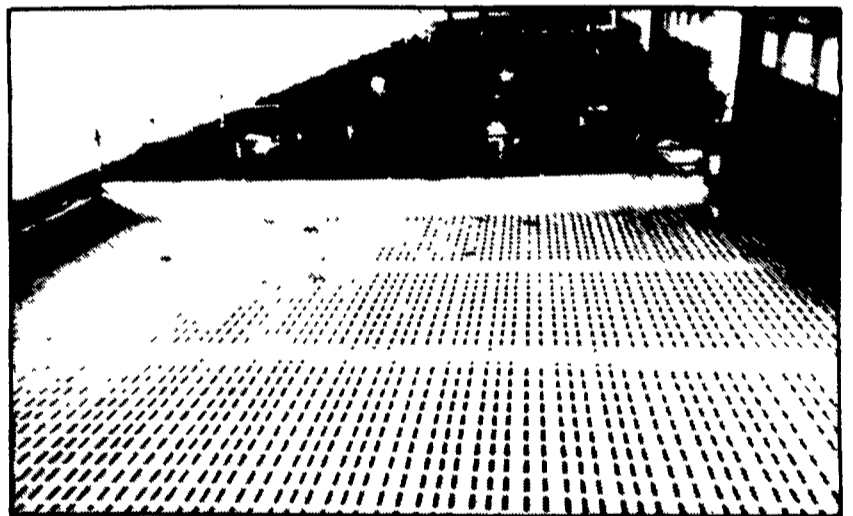
Mon., Wed., Thurs., Fri. 8 a.m.-8 p.m.; Tues. 8 a.m.-5 p.m.; Sat. 9 a.m.-3 p.m.

ARCTIC CAT
World Class Snowmobiles



* Good only at participating Arctic Cat dealers on selected and available 1994 sleds. Always wear a helmet and don't drink and ride. ©1993 Arctic Sales Inc. ® TM Trademarks of Arctic Inc. The River Falls, MN 56701 (715) 681-4999

• Agricultural • Commercial • Residential



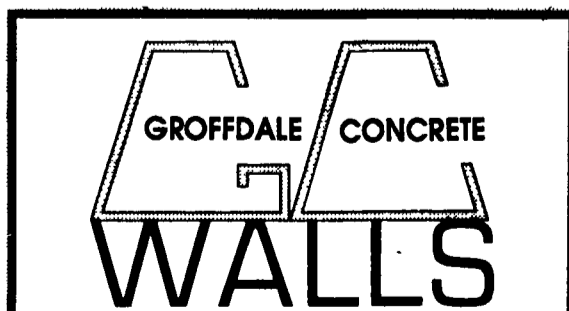
Beef Operation Featuring 8' Deep Manure Storage System With Waffle Slats

- Retaining Walls • Bunker Silos
- Manure Storage, Etc.

LET OUR EXPERIENCE WORK FOR YOU-ESTABLISHED SINCE 1979!
WE ORIGINATED THE CONCRETE SYSTEM!

Sizes And Layouts To Your Specifications

We Work Hard For Customer Satisfaction!



INC.

430 Concrete Ave., Leola, PA
717-656-2016

Authorized Dealer For KEYSTONE CONCRETE PRODUCTS

- H-Bunks
- J-Bunks
- Trench Silo Walls
- Hog & Cattle Slats