



Hog Markets

New Holland Feeder Pigs

New Holland, PA
Wed., March 11, 1993
Report Supplied by Auction
TODAY: 551 HEAD
LAST WEDNESDAY: 857 HEAD
LAST YEAR: 7787 HEAD
TREND: SMALL SUPPLY FEEDER PIGS 20.00-30.00 HIGHER THAN LAST WEDNESDAY. ALL PIGS WEIGHED ON ARRIVAL AND SOLD BY THE HUNDRED WEIGHT.
US#1&2: 72 HEAD 30-34 LBS. 152.00; 39 HEAD 46-48 LBS. 122.00-134.00; 84 HEAD 50-55 LBS. 118.00-130.00; 24 HEAD 60-69 LBS. 94.00-102.00.
US #2: 7 HEAD 29 LBS. 132.00; 46 HEAD 37-39 LBS. 116.00-124.00; 36 HEAD 41-47 LBS. 124.00; 17 HEAD 50-57 LBS. 94.00-110.00.
US#2-3: 17 HEAD 34 LBS. 106.00; 10 HEAD 49 LBS. 102.00.
US#3: 18 HEAD 46-52 LBS. 60.00-62.00.
SLAUGHTER: 44 HEAD 20-24 LBS. 146.00-182.00.

New Holland Hog Auction

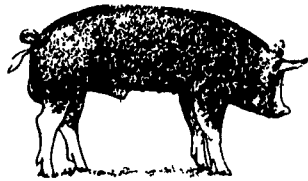
Lancaster, Pa.
Monday, March 8, 1993
Hog Receipts:
Today 1309
Last Monday 1078
Last Year 1288
TREND: Compared to last Monday barrows and gilts 1.50-2.00 lower, instances 2.50 lower late.
BARROWS AND GILTS: US 1 2 215-250 lb 46 25-46.85, late 45.50-46 25 US 1 215-240 lb 46.75-47.00.
US 1-3 215-255 lb 45.00-46.00, late 44.50-45.25. 200-210 lb 37.00-42.00
US 2-3 260-290 lb 39.50-41.00, 290-300 lb 39.00-40.00.

Lancaster Hogs

Lancaster Stockyards
Sat., March 6, 1993
Report supplied by auction
200 HEAD.
US 1 215-245 LBS. 47.00-47.50.
US 1-2 215-245 LBS. 46.50-47.00.
US 1-3 215-245 LBS. 45.50-46.50.
US 2-4 215-255 LBS. 44.50-45.00.
195-210 LBS. 39.00-41.00; 180-195 LBS. 37.00-39.00; 120-180 LBS. 32.50-36.50; 80-120 LBS. 33.00-40.00; 50-80 LBS. 30.00-40.00; 30-50 LBS. 30.00-50.00.
SOWS: GOOD SOWS 33.00-37.00; MEDIUMS 32.00-34.00; THINS 30.00-32.00.
BOARS: HEAVY BOARS 31.50-32.50.

State Graded Feeder Pig Sale

at Westminster Livestock Auction
March 5, 1993
632 PIGS, 2 WEEKS AGO 568. COMPARED TO A VERY ACTIVE SALE ON FEB. 19, PRICES WERE 10.00-25.00 LOWER.
GRADE 1&2: 11 HEAD, 34-38 LBS. 82.00-83.00, 130 HEAD 40-49 LBS. 86.00-92.00; 311 HEAD 50-59 LBS. 84.00-96.00; 78 HEAD, 60-62 LBS. 81.00-84.00; 66 HEAD, 71-78 LBS. 73.00-75.00; 30 HEAD 80 LBS 74.00
NEXT GRADED SALE FRIDAY, MARCH 19, 1.30 P.M.



Indiana Hogs

Louisville, Kentucky
Thursday, March 11, 1993
INDIANA DIRECT HOGS OPENING BARROWS AND GILTS: FIRM TO .50 HIGHER DEMAND MODERATE TO GOOD.
COUNTRY: US 1-2 230-260 LBS. 45.00-46.50.
US 1-3 230-260 LBS. 43.00-45.50, 200-230 LBS. 42.00-44.50.
SOWS: STEADY.
US 1-3 300-500 LBS. 33.00-36.00.
500-650 LBS. 36.00-39.00, FEW TO 35.00.

Walter M. Dunlap and Sons offers all cattle feeders two marketing days - Give us a call for advice and marketing conditions.

MONDAYS OR WEDNESDAYS

Consign With Us - For The Marketing Edge

Next Feeder Cattle Sale
Friday, March 19 - 11:00 A.M.

NOTICE

Due to increased demand, we will reintroduce the Wednesday Sales, Starting March 24th, 1993, 11 AM

We Respectfully Solicit All Consignments Of Steers, Bulls, Cows & Heifers
Thank You For Your Patronage

Walter M. Dunlap and Sons

Lancaster Stockyards
Tel. (717) 397-5136

An Old Line Commission Firm Keeping
Abreast With The Times



Hay & Grain Markets

Kirkwood Hay Auction

Kirkwood, Pa.
Tuesday, March 9, 1993
Report Supplied by Auction
98 LOADS OF HAY.
MIXED HAY: 1ST CUTTING 102.00-130.00; 2ND CUTTING 94.00-108.00.
TIMOTHY: 94.00-134.00.
ALFALFA. 1ST CUTTING 82.00-133.00; 2ND CUTTING 72.00-128.00, 3RD CUTTING 82.00-152.00; 4TH CUTTING 130.00-136.00.
CLOVER: 106.00-112.00
NEW SEEDING: 145.00
GRASS: 68.00-132.00.
WHEAT STRAW. 68.00-94.00.
BARLEY STRAW: 70.00-96.00
EAR CORN: 70.00.
OATS: 2.00-2.25 BU.
SALE TIME 11 A.M.

Belleville Hay

Wednesday, March 10
Belleville, PA
Report Supplied by Auction
50 LOADS OF HAY.
ALFALFA: 70.00-120.00.
MIXED HAY: 60.00-90.00.
STRAW: 10 LOADS, 65.00-87.50.
CHOP: 1.68 BAG.
OATS: 3 LOADS, 1.70-1.90 BU.
EAR CORN: 5 LOADS, 70.00-92.50.

Kutztown Produce Auction

Hay Auction
Saturday, March 6, 1993
TOTAL LOADS. 15
MIXED HAY: 70.00-100.00, 2 50 BALE
ALFALFA: 111.00-141.00
TIMOTHY: 95.00-91.50
GRASS 100.00.
WHEAT STRAW 77.00, 110-130 BALE
BARLEY: 75.00.
CLOVER SEED 60.00 BU
FIREWOOD 40.00-62.50 LOAD

North Jersey Market

Hackettstown, N.J.
Tuesday, March 9, 1993
Hay—Straw & Grain Report
ALFALFA HAY: 10 LOADS, 1.50-2.30 BALE
MIXED HAY 10 LOADS, 1.70-3.00 BALE
GRASS HAY 2 LOADS, 2.00 AND 2.20 BALE.
WHEAT STRAW: 3 LOADS, 1.30-1.70 BALE
SHELLED CORN: 5 LOADS AT 2.50-6.00 BAG
OATS: 3 LOADS, 5.50-6.25
FIREWOOD: 45.00 LOAD.
TOTAL: 34 LOADS.

KIRKWOOD HAY AUCTION

Hay, Straw and Grain Auction
EVERY TUESDAY
11:00
Located Rt. 472 5 miles south of Quarryville or 6 miles north of Oxford corner of Rt. 472 and Noble Road.

Lloyd H. Kreider,
Auctioneer
AU-000513L
No out of state checks

Regional Hay

March 8, 1993
Eastern, Pa.
HAY & STRAW MARKET FOR EASTERN PA - (ALL HAY NO. 2 AND BETTER. PRICES PAID BY DEALERS AT THE FARM & PER TON). HAY AND STRAW MOSTLY STEADY, INSTANCES WEAKER.
ALFALFA 80.00-120.00; MIXED HAY 55.00-110.00; TIMOTHY HAY 55.00-110.00; STRAW 40.00-85.00; MULCH 20.00-40.00.
SUMMARY OF LANCASTER CO. HAY AUCTIONS FOR WEEK ENDING 03/05/93. PRICES PER TON: LOADS: 360 HAY, 97 STRAW, & 17 EAR CORN.
ALFALFA 78.00-160.00; MIXED HAY 70.00-145.00; TIMOTHY HAY 95.00-142.00; STRAW 50.00-97.00; EAR CORN 73.00-80.00.
SUMMARY OF CENTRAL PA. HAY AUCTIONS FOR WEEK ENDING 03/05/93. PRICES PER TON: LOADS: 181 HAY, 42 STRAW & 10 EAR CORN.
ALFALFA 75.00-122.00; MIXED HAY 50.00-115.00; TIMOTHY HAY 58.00-110.00, STRAW 50.00-87.00; EAR CORN 58.00-76.00.

Good's Hay

Leola, Pa.
Wed., March 10, 1993
Report Supplied by Auction
TOTAL LOADS: 158.
MIXED HAY: 60.00-154.00.
ALFALFA: 63.00-140.00.
STRAW: 46.00-80.00.
TIMOTHY: 69.00-143.00.
GRASS: 60.00-120.00.
CORN: 64.00-75.00.
OATS: 1.65-1.90 BU.
CLOVER: 61.00-63.00.
STUBBLE HAY: 87.00.

Keister's Hay

Middleburg, PA
March 9, 1993
Report supplied by auction
58 LOADS OF HAY.
ALFALFA 60.00-115.00
MIXED HAY: 50.00-105.00
TIMOTHY 100.00-115.00
MULCH: 35.00.
STRAW. 18 LOADS, 50.00-70.00
EAR CORN: 10 LOADS, 50.00-75.00
OATS: 8 LOADS, 1.60-2.35 BU
WOOD 50.00-60.00 LOAD

Greencastle Livestock Market

Hay & Straw
March 4 and 8, 1993
34 LOADS.
ALFALFA: GOOD 95.00-112.50, FAIR 76.00-95.00
ALFALFA MIXED: 79.00-99.00
TIMOTHY HAY: 90.00-110.00
MIXED HAY: 65.00-90.00.
WHEAT STRAW: 72.00-75.00.
BARLEY STRAW: 71.00-77.50

Frederick Co. Hay

Buckeystown, Md.
Thursday, March 11, 1993
Report Supplied by Auction
48 LOADS. CLEAR, COLD AND WINDY, MARKET ABOUT STEADY
ALFALFA FAIR TO GOOD 105.00-140.00, FAIR, SOME DARK 70.00-90.00, BIG BALES 20.00-45.00 EACH
TIMOTHY FAIR TO GOOD 117.00-120.00, FAIR, SOME DARK 50.00-65.00, BIG BALES 10.00-27.00 EACH
MIXED HAY FAIR TO GOOD 132.00-135.00, FAIR, SOME DARK 62.00-80.00, BIG BALES 13.00-25.00 EACH.
BROME GRASS: 61.00.
STRAW: BRIGHT 55.00-72.00.
FIREWOOD: 47.00-77.00 CORD.

Diffenbach Auction Center

New Holland, Pa.
Monday, March 8, 1993
Report Supplied by Auction
TOTAL LOADS: 233.
ALFALFA: 62.00-166.00.
MIXED HAY: 72.00-175.00.
TIMOTHY: 72.00-145.00.
CLOVER: 95.00.
OATS HAY: 65.00.
ORCHARD GRASS: 72.00-115.00.
STRAW: 50.00-98.00.
EAR CORN: 68.00-77.00.
OATS: 1.50-2.10 BU.
This sale was formerly held at the New Holland Sales Stables. It is now held at Diffenbach's New Holland Auction Center Ltd., 100 W. Jackson St., New Holland, across from the prior sale location. Auction time is 10:00 a.m. Monday.

Vintage Hay

Paradise, PA
Thurs., March 11, 1993
Report Supplied by Auction
47 LOADS
EAR CORN: 72.00
MIXED HAY 102.00-127.00
ALFALFA 71.00-150.00
TIMOTHY 89.00-108.00
ORCHARD GRASS 71.00-103.00
GRASS HAY 75.00 90.00
STRAW 62.00-72.00
SALE TIME 1 P.M.

Westminster Hay

Westminster, Md.
Tuesday, March 9, 1993
Report Supplied by Auction
ALFALFA: 116.00, 170-3.60 BALE
TIMOTHY: 55.00-112.00, 135-2.70 BALE
CLOVER: 1.70 BALE.
MIXED HAY: 55.00-70.00, 75-3.10 BALE, 8.00-29.00 LARGE ROUND
GRASS: 1.00-2.10 BALE
STRAW: 62.00-85.00, 25-1.50 BALE
OATS: 2.20 BU.
EAR CORN: 70.00.
WOOD: 62.50-82.50 CORD

In This Issue

Five Sections

DEPARTMENTS

Editorial A 10
Farm Calendar..... A 10
Business News C 6
Classified Ads C15, D 6
Mailbox Markets..... E 3
Sale Reports E 12
Public Auction Register E 14

FEATURES

FFA Tours State..... A 23
Hershey Brothers A 30
Farm, Church Speaker B 16
Brothersvalley FFA..... B 23
National Agriculture Day.. D 5

COLUMNS

Now is the Time..... A 10
On Being A Farm Wife.... B 4
Ida's Notebook..... B 3
Taking Time..... B 5
Have You Heard B 7
Livestock Notes B 25, C 10
E-I-E-I-O..... C 2
Poultry Pointers..... C 4

HOME AND YOUTH

Homestead Notes B 2
Home On The Range B 6
Cook's Question Corner B 8
Kid's Korner B 10
4-H Happenings B 12, 15, 21
Farm Women Societies..... B 19
FFA Happenings B 22

DAIRY

Holstein Winter Forum A 34
DHIA Focus..... A 22
Lancaster DHIA..... B 24
Dairy Of Distinction D 3