

Public Auction Register

Closing Date Monday 5:00 P.M.
of each week's publication

SAT APR 3 - 9AM Parts inventory, equipment machines, tools Rear 500 Mill St., Catawissa, Pa Seller Charles E Motto George J & George R Henry, aucts

SAT APR 3 - 9AM Annual Schuylkill County Fair Spring Consignment Auction, Schuylkill Co Fairgrounds Lawn equipment, tools, antiques, nursery stock, household goods, new bldg supplies Farm Toys @ 6 PM Local auctioneers

SAT APR 3-9AM Kerstetter's Annual consignment sale, farm machinery, farm-related items, construction tools, vehicles, etc Located along Rt 64, 5 mi NE of Bellefonte, Pa, Walker Twp, Centre Co Kerstetter Auction, aucts

SAT APR 3 - 9 30AM Farm machinery, 143 Ac +- Dairy Farm Located at 10805-B Haughs Church Rd., Keymar, Md M "Tom" Eyler, owner Trout aucts

SAT APR 3 - 9 30AM, Inventory Reduction Auction Of New & Used Farm, Industrial & Lawn & Garden

Equipment Located Along Rt. 652-5 Miles East Of Honesdale, Pa B. Rentzel & E Goodrich, Aucts

SAT. APR. 3 - 9:30AM, John Deere "GP" Tractor, Vinage Farm Equipment, Farm Equip., Antiques, Dated 1790 Sampler & Household Goods Located Turn S Off Rt 422 East Bound In Douglassville, (Just E Of Rt 662), Or 4 Mi W Of Pottstown At Klein's Bus Service, Onto Old Reading Ave For 1/4 Mi Then E Onto Old Phila Pike For 1/2 Mi, Douglass Twp, Berks Co Watch For Signs. Sold For, Pat Morris & Frank Banus. Frey Aucts

SAT. APR 3 - 9:30AM Spring consignment auction. Issenock Auction Service.

SAT APR 3 - 9 30AM Marshall Machinery Inc Rt 652 Midway between Indian Orchard & Beach Lake, Inventory Reduction Sale Farm Machinery, Tractors, Lawn & garden and industrial

SAT APR 3 - 10AM, Tractors, Farm Machinery, Lawn & Garden Tractors,

Etc Located In The Village Of Richfield, Pa. (Juniata Co), Turn South Off Rt 35 At The County Line Restaurant & Go 3 Miles To The Village Of Fogle Hill. In Fogle Hill, Make A Left On Road To Oriental & Go 4 Miles Until You Come To Laurel Hill Rd. Then Make Right Onto Laurel Hill Rd. & Travel 1/2 Mile To Site Of Auction (Located 1 Mile Southwest Of Hoffman's Haymaker Restaurant) Watch For Auction Signs Off Rt 35 At Richfield & Off Rt 104. Owner, Elwood (Woody) C Flowers Roger A Lauver & Dean E Longacre, Aucts.

SAT. APR 3 - 10AM, 105 Acre Kutztown Farm w/ Stone Farmhouse Located 3 Mi NE Of Kutztown PA (East Of Kutztown Turn N Off Rt. 222 At Arbys, Go Approx. 2 Mi Turn L On Long Lane For 1 Block) Ordered By, Northeastern Bank Conducted By Ralph W Zettlemoyer Auction Co, Inc

SAT APR 3 - 10AM, Robert Miller Co. Inventory Reduction Auction Of Farm Equip & Lawn & Garden. Located At North Cohocton, New York. Pirrung Aucts. Inc. 716-728-2520.

SAT. APR 3 - 10AM, To Settle The Estate Of Florence Fogleman, Household Goods, Antiques, Tools, Etc Located Muncy, Pa. Oscar Kirkner, Exe. Fraley Auction Company.

PUBLIC AUCTION FRIDAY, MARCH 26, 1993

@ 10:00 A.M.

TRACTORS & FARM & CONSTRUCTION

Held At Our Yard, Rt. 38 & 38B,
Newark Valley, N.Y.

Consignments Welcome

Don't Need It? Cash It!

Trucking Available, Low Comm. Be Part Of Area's Finest Auction.

Goodrich Auction Service Inc.

607-642-3293

Fax 607-642-3295

272± ACRE FARM AT AUCTION

SAT. APRIL 10th, 1993

AT 12:00 NOON

LOCATED: From Red Lion Square go South on Rt.#74 approx. 1 mile turn left on Burkholder Rd. Farm land starts approx. 1/2 mile after you turn onto Burkholder Rd., Windsor Twp., York Co. PA., tax map HL, parcel 11, deed ref. 81F, page 333, some signs posted.

This is one of the larger single tracts of land with 200 Acres of farm ground. Approx. 3 miles of road frontage, dairy barn, bank barn and corn crib for buildings (NO HOME). Looking at this farm you will agree that it is indeed some of the nicest farm ground you will find. This farm has long planting fields, if farming is not what you after this farm is zoned Residential with the possibility of well over 500 lots. Survey's posted on corn barn. Strong spring on farm. Auction staff will be available to show boundaries on Sun. 14, 21, 28 of March from 1:00 to 3:00 PM. We will be at the farm or by Apt. call owner or Auctioneer. The owner has indicated to me to tell the people he would like to sell this property, tell them to bring the down payment auction day. Farm is in Clean & Green.

TERMS: 10% down on Auction day, balance in full within 90 days or possible owner financing with 20% down balance amortized over 20 years at 8% with a balloon payment in 5 years. If you are the buyer auction day, you will be able to plant your spring crops all land is available.

It is true that there has never been a better time to buy Real Estate, be there.

Sellers:

KENNETH R. &
GLADYS M. STOLTZFUS

Ph: 717-244-7008

Attorney: George L. Eveler III
Auctioneer: Bradley K. Smith
GRI, CRS, CAI, AARE
Associate PA Real Estate Broker
Lic. #860-L Ph: 717-927-6949

PUBLIC AUCTION OF MODERN FARM MACHINERY SATURDAY, MARCH 20

Commencing At 9:30 A.M.

Located: Take Route 15 Approx. 3 Miles North of Lewisburg, Turn West At CVC on Colonel Kelly Road, Approx. 2 Miles To Sale. 1/2 Mile East of Back Penitentiary Entrance, Union County.

★ Excellent Line of Modern Farm Machinery ★ TRACTORS

"2290" Case Diesel Tractor with Duals, Cab - A/C, Radio & Dual Outlets, 1900 hrs. "1394" Case Diesel Utility Tractor. "995" Case Diesel Tractor, 2800 Hrs.

FARM MACHINERY

TILLAGE EQUIPMENT: 5-16" Case Spring Re-Set Semi Mount Plow; Model 215 13.6 ft. John Deere Tandem Disk w/Rake Teeth Leveler; John Deere 9 Tooth Conset Till; 14 ft. Brillion Cultipacker; 3 pt. 1 Section John Deere Rotary Hoe; 3 pt. 4 Row International Cultivator.

PLANTING EQUIPMENT: Model 7000 4 Row John Deere Corn Planter w/Dry Fertilizer Attachment; 16-7 Single Disk Model 510 Grain Drill.

HARVESTING EQUIPMENT: "708" New Idea Hydro System w/4 Row 38" Sheller Head, 30" - 38" 3 Row Harvest Head and 12 ft. Grain Head; Model 767 Super Chopper w/Pickup Head for Hydro System; Model 499 12 ft. New Holland Haybine, Center Pivot Hydraulic Swing; Model 316 New Holland Baler w/Thrower; 3 pt. 7 ft. Massey Ferguson Belt Driven Mower; 2-No. 920 Gehl Chuck Wagons w/Roof and Telescoping Tongues; 4 Wide Track Bale Wagons; 30 ft. Zimmerman Bale Elevator, New; No. 36 New Holland Flail chopper; No. 40 New Holland Silo Blower; 2 Wheel Hay Turner; No. 258 New Holland Roller Bar Hay Rake with tongue.

MISC. FARM ITEMS: 300 Gal. Hardy Field Sprayer, HD Pump & Folding Booms 6 ft. 3 pt. Blades; 3 Sections 9" Blower Pipe; Vibrating Bunk Feeder; Ritchie Waterer; Free Stalls; Metal Gates; 2 Feed Carts; Large Portable Barn Fan; 16" Barn Fan w/Thermostat; Individual Wrought Iron Calf Feeding Stalls; 2 Cast Iron Water Troughs; Drinking Cups; Some Wagon Supplies; 3 & 5 h.p. Electric Motors; Block & Tackle; 2 Hay Ropes; Wooden Bolt Cabinets; Large Rubber Tire 2 Wheel Trailer; Farm Generator w/Bad Points; 12' Shop Door w/Windows; 3/8" New Cable; Expansion Tank.

TRUCK

1961 - V500 Dodge Hydraulic Hoist Truck w/Grain Tight Box, Gross 12 Ton.

MILKING EQUIPMENT

800 Gal. Girton Bulk Milk Tank & Compressor; Automatic Bulk Tank Washer; 114 Gal. Thermo - Star Electric Water Heater w/Compressor Hookup; 7 h.p. 8 Unit Universal Milker Pump.

BUTCHERING EQUIPMENT

4 Cast Iron Butchering Kettles; 2 Furnaces; Wells Electric Vertical Saw; Meat Bench; Butcher Knives.

HOUSEHOLD GOODS & ANTIQUES

Oak Extension Table with Boards; 2 Oak Sideboards; Antique Round Heatrolas; Desk Chairs; Aluminum Storm Doors.

TERMS: Cash or Approved Check. No Out of State Checks.

MR. & MRS. CHARLES HAUCK,
Owners

R.D. 3, Lewisburg, Pa. (717) 524-2424

Auctioneers: Wayne M. Hess AU-000411-L

(717) 922-1206

Lori Hess-Lauver, AU-002854-L

(717) 966-2512

Owners & Auctioneers Not Responsible For Accidents

PUBLIC AUCTION

DESIRABLE 166+- ACRE FARM

1814 POOLE ROAD, DARLINGTON
HARFORD COUNTY, MD 21034

— ON —

SATURDAY, MARCH 20, 1993

AT 12:00 NOON



Directions: PA RT. 222 to Conowingo, MD area, then US Rt. 1 South to Darlington, L. on Poole Road to Farm. Signs Posted. To Settle The Estate Of William X. Vaughan, the Undersigned Personal Representatives will offer the Real Estate and Improvements at Public Auction on the Premises. This farm fronts on Poole and Cedar Church Roads containing approx. one mile road frontage and 16 Building Rights. This former dairy farm has fenced pastures and a 80 Stall Free-Stall Barn which would make a good workable Beef Operation. There is a 24x70 Silo, 3 Machinery Sheds, and Truck Garage. The updated residence is a well-maintained 4BR, 1 1/2 Bath maintenance-free home w/Garage and Picnic Pavilion. Also a 3BR Tenant Farmhouse and an old bank barn. The land is level to gently rolling offering good development potential or continued farm usage. This outstanding offering deserves your direct consideration! Call Auctioneer at (410) 557-8052 or MONDAYS ONLY at (717) 993-2564 for further information or appt.

TERMS: \$10,000.00 Cash or Certified Funds Day of Sale. \$10,000.00 within 15 days. Settlement within 60 days. Full Terms available from Auctioneer and day of sale.

By Authority Of:

David Vaughan, Rita Poole,
Sharon Blevins, PR's

Estate of Wm. X. Vaughan

Michael S. Birch, Esq.

Attorney for Estate

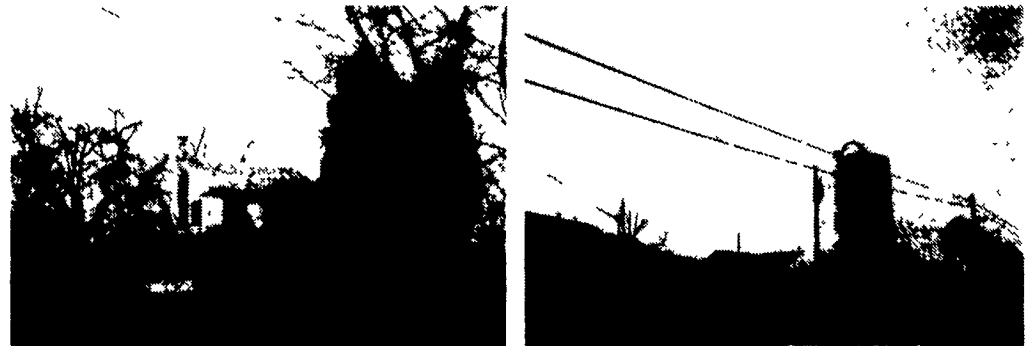
Issenock
Auction
SERVICES, INC.
410-557-8052
717-993-2564
Lic# AU2862E

PUBLIC AUCTION

SAT., MARCH 20, 1993 9 AM

Located along the Klingerstown to Pillow Road, 2 mile West of Klingerstown, Pa. 5 mi. East of Pillow & Rt. 225 Jordon Twp, Northumberland County (37 mi. N.E. of Har- risburg, Pa.)

153± ACRE FARM



Approx. 82 acres of good tillable soil. 60± ac. woodland, 2 1/2 story 4 bedroom farm house, vinyl siding, new oil h. water furnace in 1989, home in good state of repair. Bank barn with 30' W x 86' L 2 story addition. Num. other outbuildings, barn presently set up for steers. Spring - well and pond on farm.

For inspection or information Ph. (717) 286-0052. Plan to inspect this beautiful farm. Arrange your financing and be prepared to bid at auction. To be offered at 12 noon.

Terms: 10% down day of auction, balance due in 60 days. (No out of state checks.)

Farm located in the proximity of Lykens Valley and Amish Community.

TRACTORS - FARM MACHINERY - TOOLS - HAY - STRAW
ANTIQUES - HOUSEHOLD

Owner

MRS. (GEORGE R.) CORRINE D. WOLFGANG

Attorney: Carpenter - Diehl - Kivko
Mark J. Jones Auctioneering Service
Phone (717) 286-0052 Lic. #AU1595-L
Jeff Dunkelberger Lic. #AU3043-L

